

SILVER TUNA — VIKING



Builder: VIKING

Year Built: 2005

Model: Sport Fisherman

Price: PRICE ON APPLICATION

Location: United States

LOA: 45' 0" (13.72m)

Beam: 16' 4" (4.98m)

Min Draft: 4' 6" (1.37m)

Cruise Speed: 28 Kts. (32 MPH)

Max Speed: 32 Kts. (37 MPH)

Our experienced yacht broker, Andrey Shestakov, will help you choose and buy a yacht that best suits your needs **SILVER TUNA — VIKING** from our catalogue. Presently, at Shestakov Yacht Sales Inc., we have a wide variety of yachts available on our sale's list. We also work in close contact with all the big yacht manufacturers from all over the world.

If you would like to buy a yacht **SILVER TUNA — VIKING** or would like help answering any questions concerning purchasing, selling or chartering a yacht, please call **+1(954)274-4435**

TABLE OF CONTENTS

TABLE OF CONTENTS	2
SPECIFICATIONS	5
Overview	5
Basic Information	5
Dimensions	5
Speed, Capacities and Weight	5
Accommodations	5
Hull and Deck Information	6
Engine Information	6
DETAILED INFORMATION	7
Accommodations	7
Master Stateroom, Forward	7
Guest Stateroom, Amidship Port	7
Salon	7
Master Head	8
Guest Head, Amidship Port	8
Galley, Port	8
Helm / Electronics and Navigation	9
Deck	9
Engine and Mechanical Equipment	10
Electrical System / Equipment	10
Cockpit / Fishing Equipment	10
Additional Features / Equipment	11
Exclusions	11
Salesman's Comments	11
Exclusions	11
Disclaimer	11
PHOTOS	12

Profile 3	12
Profile 2	12
Master Stateroom 1	12
Master Stateroom 2	12
Guest Stateroom 1	13
Guest Stateroom 2	13
Guest Stateroom 3	13
Salon 1 - Sofa	13
Salon 2	14
Salon 3 - Dinette	14
Salon 4 - Dinette	14
Salon 5 - TV	14
Salon 6	14
Salon 7	14
Guest Head 1	15
Salon 8 - Entertainment System	15
Guest Head 2	15
Galley 1	15
Galley 2	16
Galley 3	16
Galley 4	16
Helm / Electronics & Navigation 1 - Helm Pod	16
Helm / Electronics & Navigation 2 - Radio Box	17
Helm / Electronics & Navigation 3 - Port Side Electronics Box	17
Deck 1 - Bow	17
Deck 2 - Helm Seats	17
Deck 3 - Forward Bridge Seating	18
Deck 4 - Bridge Seating Starboard Side	18
Deck 5 - Bridge Air Conditioning	18

Deck 6 - In-Deck Storage Box Port	18
Deck 7 - In-Deck Storage Box Starboard	18
Deck 8 - Drink Box	18
Engine & Mechanical Equipment 1 - Engine Room	19
Engine & Mechanical Equipment 2 - Port Engine	19
Engine & Mechanical Equipment 3 - Starboard Engine	19
Engine & Mechanical Equipment 4	19
Engine & Mechanical Equipment 5	19
Engine & Mechanical Equipment 6	19
Engine & Mechanical Equipment 7	20
Engine & Mechanical Equipment 8	20
Engine & Mechanical Equipment 9	20
Electrical System - Distribution Panel	20
Cockpit / Fishing Equipment 2 - Cockpit Freezer & Tackle Center	21
Cockpit / Fishing Equipment 1 - Cockpit	21
Cockpit / Fishing Equipment 3 - In-Deck Fish Box	21
Additional Features / Equipment - Lazarette	21
CONTACTS	22
Contact details	22
Telephones	22
Office hours	22
Address	22

SPECIFICATIONS

Overview

This 45' Viking is in new condition with only 600 hours of use. She has the desired 900 hp. Common Rail MAN's and has 848 gallons of fuel. She has been meticulously maintained since day one! If you are considering a 45' Viking, you owe it to yourself to look at this one before you purchase any other vessel! You will not find a cleaner 45' Viking anywhere!

Basic Information

Category: Sport Fisherman

Sub Category: Convertible

Model Year: 2005

Year Built: 2005

Country: United States

Vessel Top: 2363

Cockpit: Yes

Dimensions

LOA: 45' 0" (13.72m)

LOD: 45' 0" (13.72m)

Beam: 16' 4" (4.98m)

Min Draft: 4' 6" (1.37m)

Speed, Capacities and Weight

Cruise Speed: 28 Kts. (32 MPH)

Max Speed: 32 Kts. (37 MPH)

Displacement: 49750 Pounds

Water Capacity: 150 Gallons

Fuel Capacity: 848 Gallons

Accommodations

Total Cabins: 2

Total Berths: 4

Sleeps: 4

Total Heads: 2

Hull and Deck Information

Hull Material: Fiberglass

Deck Material: Fiberglass

Hull Configuration: Semi Vee

Hull Color: White

Hull Finish: Fiberglass

Hull Designer: Viking Yachts

Engine Information

Engines: 2

Manufacturer: MAN

Model: Common Rail

Engine Type: Inboard

Fuel Type: Diesel

DETAILED INFORMATION

Accommodations

Sleeps four owners and guests in two staterooms for a total of four berths. One Master head with shower, one Guest head with shower. The 119 square foot tournament-ready Cockpit leads you into a spacious teak-accented Salon. Adjacent is the open-plan Galley with under-counter Sub-Zero refrigeration. The padded Companionway brings you to the Guest Stateroom and Head on the port side and the forward Master Stateroom with full Head to starboard.

Master Stateroom, Forward

- Speakers
- Carpeting
- Deck hatch
- Hanging locker
- Under bed drawer
- Under bed storage
- 15" LCD flat-screen TV
- Stereo system w/ CD player
- Air conditioning / heater with controls
- Queen berth w/ upgraded innerspring mattress

Guest Stateroom, Amidship Port

- Speakers
- Carpeting
- Wallpaper
- Deck hatch
- Hanging locker
- Under bed storage
- Upper & lower berth
- Air conditioning / heater with controls

Salon

- Carpeting
- 27" Sony TV
- Stereo system
- Luxury decor

- Telephone jack
- Tinted windows
- Silhouette blinds
- Decor accessories
- Salon door damper
- Canvas rug runner
- Cable TV hookups
- Ottoman w/ storage
- Channel Plus System
- L-shaped dinette w/ storage
- Viking Home Theater System
- Wrapped hatch carpet installation
- Bose stereo system / DVD system
- Air conditioning / heater with controls
- Amtico teak & holly at Salon entrance

Master Head

- Sink
- Shower
- Wallpaper
- Exhaust fan
- Medicine cabinet
- Teak & holly flooring
- Holding tank, overboard, electric head

Guest Head, Amidship Port

- Sink
- Shower
- Wallpaper
- Exhaust fan
- Medicine cabinet
- Teak & holly flooring
- Holding tank, overboard, electric head

Galley, Port

- Water heater
- Garbage disposal
- Teak & holly flooring

- Central vacuum system
- Three-burner, electric stove
- Corian countertops w/ Corian sink
- Microwave oven w/ convection oven
- Pressure, dockside fresh water system
- Under counter, Sub-Zero refrigerator & freezer units

Helm / Electronics and Navigation

- Compass
- KVH SAT TV
- Furuno 511 auto pilot
- (2) Under water lights
- Icom M-502 VHF radio
- Icom M-602 VHF radio
- (2) RCA SAT TV receivers
- Northstar 6000 GPS / Chart plotter
- Furuno RD-30 digital depth / temp
- Icom HM-127 Command Mic in Salon
- Furuno 10" NAV NET with sounder / radar / plotter / GPS

Deck

- Anchor
- Spreader lights
- Factory hardtop
- Navigation lights
- Coaming padding
- Bow pulpit w/ rails
- Foredeck anchor locker
- Walk-thru transom door
- Lewmar electric windlass
- Custom hatch cover on Bridge
- (2) Murray Products Helm seats
- Recessed electronics boxes at Helm
- Winter canvas for Bridge & Cockpit
- 4-sided Costa clear Bridge enclosure (2008)
- Electric controlled search light w/ remote control
- Fresh water, pressure, salt water wash down system
- Y-valve for fresh water & salt water wash downs in Cockpit
-

Engine and Mechanical Equipment

- Racor fuel filters
- Bennett trim tabs
- (2) Bilge blowers
- Fuel prime pumps
- Oil pressure alarm
- Oil transfer system
- Fire control system
- Helm air conditioning
- MAN back-up controls
- Bridge engine controls
- Hydraulic wheel steering
- Engine temperature alarm
- Engine fuel shut-off valve
- Fresh water cooling system
- Acoustical, thermal insulation
- (4) Automatic, manual bilge pumps
- (2) Y-valve emergency bilge pumps
- Cruiseair reverse cycle air conditioner
- Automatic, manual Halon fire extinguisher
- Upgraded Head Hunter fresh water pump (2008)
- Twin 900 hp. Diesel I/B 2005 MAN Common Rails w/ 600 hrs.
- Fiberglass Helm pod w/ Rex Roth electric, single-lever engine controls

Electrical System / Equipment

- (5) Batteries
- Battery parallel switch
- Glendinning cablemaster
- 220v AC electrical system
- Automatic battery charger
- 12v, 24v DC electrical system
- 17kW Onan generator w/ noise box (650 hrs.)

Cockpit / Fishing Equipment

- Fish box
- Bait freezer
- Gaff storage
- Rupp outriggers
- Rupp center rigger

- New Cockpit coaming pads
- (7) Release Brand Rod holders
- Dual thermostat for Cockpit freezer
- 6-rod Rocket launcher (aft Bridge rail)

Additional Features / Equipment

- Oval exhausts
- Awlgrip bilges
- Engine Room door lock
- Hidden Bridge fasteners
- Fiberglass side thru hulls
- Awlgrip thru hulls & sea strainers
- MAN 1000 hr. service performed (3/2013)

Exclusions

- Fighting chair
- Owner's personal gear and items

Salesman's Comments

This 45' Viking is in new condition with only 600 hours of use. She has the desired 900 hp. Common Rail MAN's and has 848 gallons of fuel. She has been meticulously maintained since day one! If you are considering a 45' Viking, you owe it to yourself to look at this one before you purchase any other vessel! You will not find a cleaner 45' Viking anywhere!

Exclusions

Owner's personal belongings.

Disclaimer

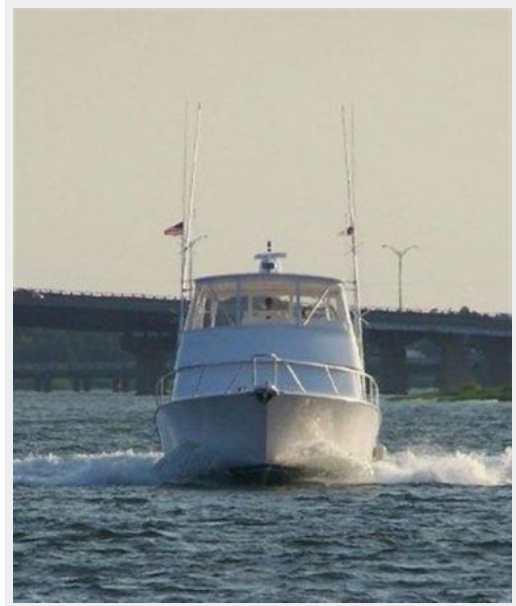
The Company offers the details of this vessel or yacht in good faith but cannot guarantee or warrant the accuracy of this information nor warrant the condition of the vessel. A buyer should instruct his representatives, agents, or his surveyors, to investigate such details as the buyer desires validated. This vessel or yacht is offered subject to prior sale, price change, or withdrawal without notice.

PHOTOS

Profile 2



Profile 3



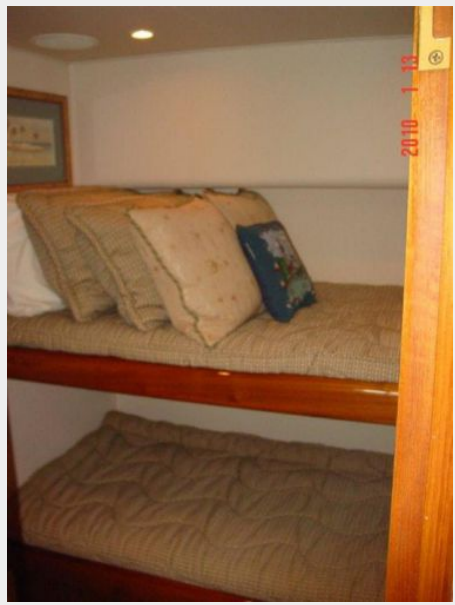
Master Stateroom 1



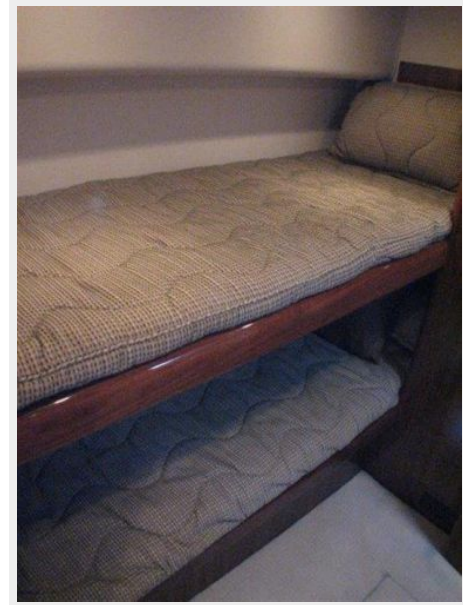
Master Stateroom 2



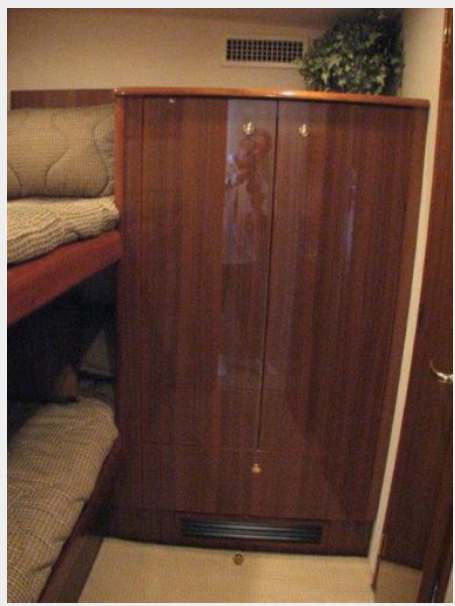
Guest Stateroom 1



Guest Stateroom 2



Guest Stateroom 3



Salon 1 - Sofa



Salon 2



Salon 3 - Dinette



Salon 4 - Dinette



Salon 5 - TV



Salon 6



Salon 7



Salon 8 - Entertainment System



Guest Head 1



Guest Head 2



Galley 1



Galley 2



Galley 3



Galley 4



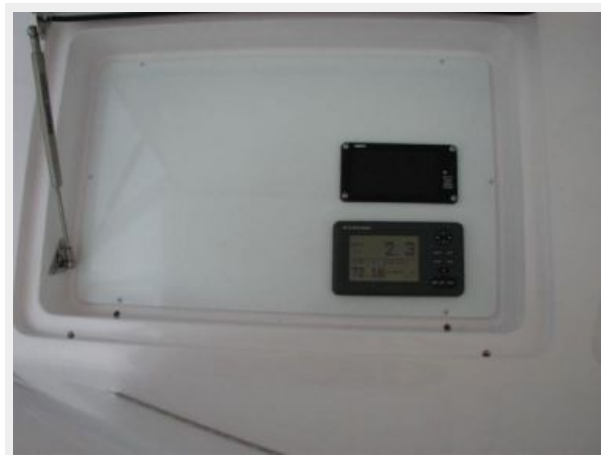
Helm / Electronics & Navigation 1 - Helm Pod



Helm / Electronics & Navigation 2 - Radio Box



Helm / Electronics & Navigation 3 - Port Side Electronics Box



Deck 1 - Bow



Deck 2 - Helm Seats



Deck 3 - Forward Bridge Seating



Deck 4 - Bridge Seating Starboard Side



Deck 5 - Bridge Air Conditioning



Deck 6 - In-Deck Storage Box Port



Deck 7 - In-Deck Storage Box Starboard



Deck 8 - Drink Box



Engine & Mechanical Equipment 1 - Engine Room



Engine & Mechanical Equipment 2 - Port Engine



Engine & Mechanical Equipment 3 - Starboard Engine



Engine & Mechanical Equipment 4



Engine & Mechanical Equipment 5



Engine & Mechanical Equipment 6



Engine & Mechanical Equipment 7



Engine & Mechanical Equipment 8



Engine & Mechanical Equipment 9



Electrical System - Distribution Panel



Cockpit / Fishing Equipment 1 - Cockpit



Cockpit / Fishing Equipment 2 - Cockpit Freezer & Tackle Center



Cockpit / Fishing Equipment 3 - In-Deck Fish Box



Additional Features / Equipment - Lazarette



CONTACTS

Andrey Shestakov, leading yacht broker of the sales department of Shestakov Yacht Sales Inc. Shestakov Yacht Sales Inc., the official representative of the Miami/Fort Lauderdale FL headquarters.

Contact details

Email: andrey@shestakovyachtsales.com

Web: shestakovyachtsales.com/en/

Telephones

USA: +1(954)274-4435

Office hours

Monday – Saturday: **9:00 - 21:00** EDT

Sunday: **closed**

Address



Harbour Towne Marina, 850 NE 3rd St,
STE 213, Dania, FL 33004