

## GROUSE LL — GULFSTAR



**Судостроитель:** GULFSTAR

**Год постройки:** 1979

**Модель:** Sloop

**Цена:** **ЦЕНА ЯХТЫ ПО ЗАПРОСУ**

**Местонахождение:** United States

**Длина общая:** 50' 0" (15.24m)

**Ширина:** 13' 7" (4.14m)

**Мин. осадка:** 5' 5" (1.65m)

**Макс. осадка:** 5' 5" (1.65m)

Купить **Grouse II — GULFSTAR** а также выбрать подходящую вам яхту из нашего каталога яхт вам поможет опытный яхтенный брокер Андрей Шестаков. На сегодняшний день компания **Shestakov Yacht Sales Inc.** имеет большое количество яхт в собственном списке продаж, а также тесно сотрудничает со всеми крупными яхтенными производителями по всему миру.

Для того чтобы купить яхту **Grouse II — GULFSTAR** а также проконсультироваться по любому вопросу связанному с покупкой, продажей, чартером яхт позвоните по телефону **+7(918)465-66-44**.

# ОГЛАВЛЕНИЕ

ОГЛАВЛЕНИЕ	2
ХАРАКТЕРИСТИКИ	5
Обзор	5
Основная информация	5
Размеры	5
Скорость, вместимость и масса	5
Размещение	6
Корпус и палуба	6
Информация о двигателе	6
ПОДРОБНОЕ ОПИСАНИЕ	7
Mechanical & Electrical	7
Deck Equipment	8
Electronics	8
Galley	9
Safety Equipment	9
Sail Inventory	9
Cabin	10
Disclaimer	11
Исключения	11
Отказ от ответственности	11
ФОТОГРАФИИ	12
50' Gulfstar port forward profile	12
50' Gulfstar starboard forward profile	12
50' Gulfstar forward profile	12
50' Gulfstar starboard aft profile	12
50' Gulfstar port aft profile	12
50' Gulfstar anchor windlass	12
50' Gulfstar foredeck	13

50' Gulfstar port side deck	13
50' Gulfstar starboard side deck	13
50' Gulfstar cockpit bimini-dodger	13
50' Gulfstar cockpit	13
50' Gulfstar cockpit forward	13
50' Gulfstar cockpit aft	14
50' Gulfstar cockpit hatch	14
50' Gulfstar transom	14
50' Gulfstar salon forward	14
50' Gulfstar salon aft	14
50' Gulfstar salon seating photo1	14
50' Gulfstar salon seating photo2	15
50' Gulfstar salon seating photo3	15
50' Gulfstar nav station photo1	15
50' Gulfstar nav station photo2	15
50' Gulfstar salon starboard	15
50' Gulfstar galley photo1	15
50' Gulfstar galley photo2	16
50' Gulfstar galley photo3	16
50' Gulfstar refrigeration photo1	16
50' Gulfstar refrigeration photo2	16
50' Gulfstar galley sink	16
50' Gulfstar master stateroom photo1	16
50' Gulfstar master stateroom photo2	17
50' Gulfstar master stateroom head	17
50' Gulfstar master stateroom shower	17
50' Gulfstar guest stateroom	17
50' Gulfstar engine compartment access photo1	17
50' Gulfstar guest stateroom head	17

---

50' Gulfstar engine compartment access photo2	18
50' Gulfstar auxiliary photo1	18
50' Gulfstar auxiliary photo2	18
50' Gulfstar generator	18
<b>КОНТАКТЫ</b>	<b>19</b>
Контактная информация	19
Телефоны	19
Время работы	19
Адрес	19

# ХАРАКТЕРИСТИКИ

## Обзор

'Grouse II' is a beautiful sloop rigged Gulfstar 50 MKII that sails fast unlike the ketch rigged boats . One of the best ever offered with all the right updates and improvements makes this boat turn key in all respects . Repowered with a Cummins 65hp , complete hull & deck paint with signature paint finish , 7hp Vetus bowthruster, new rigging, new roller furling, custom dingy davit, all new canvas & eisenglass, replaced balsa with solid glass . Note : This 1979 model features a real lead keel unlike the earlier models built for the charter industry that featured cement keels . Price reduced!

Grouse II will be available for inspection in Annapolis during the sailboat show. Two boat owner looking for offers.

## Основная информация

**Тип судна:** Sloop

**Подкатегория:** Center Cockpit

**Модельный год:** 1979

**Год постройки:** 1979

**Страна:** United States

**Верх:** 2353

**Кубрик:** Да

## Размеры

**Длина общая:** 50' 0" (15.24m)

**Ширина:** 13' 7" (4.14m)

**Мин. осадка:** 5' 5" (1.65m)

**Макс. осадка:** 5' 5" (1.65m)

## Скорость, вместимость и масса

**Водоизмещение:** 35000 Pounds

**Вместимость воды:** 210 Gallons

**Вместимость сточного бака:** 40 Gallons

**Объем топливного бака:** 160 Gallons

## Размещение

---

**Всего кают:** 2

**Всего коек:** 4

**Спальные места:** 4

**Всего ком. состава:** 2

## Корпус и палуба

---

**Материал корпуса:** Fiberglass

## Информация о двигателе

---

**Двигатели:** 1

**Производитель:** Cummins

**Модель:** B3

**Тип двигателя:** Inboard

**Тип топлива:** Diesel

# ПОДРОБНОЕ ОПИСАНИЕ

## Mechanical & Electrical

- Cummins B3 65hp main engine w/ velvet-drive transmission 2.91-1 reduction gear- (250 hours-new 2012)-

-Onan MDKD8 8KW Generator- ( complete overhaul re-built 2010)- 1,780 total hours-

- Vetus 7hp Bowthruster w/ upgraded 5 blade prop for 20% more thrust than standard .
- Heat exchangers on Engine and Generator
- Complete new rebuilt exhaust system for main engine
- 6 Gallon Hot water heater
- (2) Marine Reverse Cycle Air/Heat- 16,000 BTU & 13,000BTU w/ digital SMX key pads
- Chesapeake Dickinson Diesel Heater
- 10 amp charger for 27 group size generator battery
- 40 amp charger for two 8D batteries ( one house, one main engine) each has main switch and crossover switch
- Fire suppression system
- Scentry 415 fume detector
- Whale 'Gulper' 220 automatic/ manual bilge pump
- Whale manual emergency bilge pump
- (2) Racor 500 fuel filters ( one main engine, one generator w/ crossover ) include vacuum gauges
- (1) Racor 500 fuel filter for transfer pump between fuel tanks
- (1) 100 gallon fuel tank / (1) 60 gallon reserve fuel tank
- (1) 210 gallon water tank- ( *There is several stages of water purification. First, it passes through a 'whole house' charcoal filter after which water is again filtered for the ice maker. At galley sink there is a separate spigot fed by additional two stage filter under the sink. Water is additionally filtered prior to entering tank with an in-line filter to be used on the dock hose.*)
- U-Line 25lb per day ice maker produces purified ice for the best cocktail !
- 12 Volt high efficiency lighting throughout
- 7500 watt isolation transformer allows connection to every domestic or international power source
- 50 amp shore power
- 30 amp output connector (limited to 20 amps) to feed generator power to rafted friends- a *huge hit at raftups!*
- Bonding system
- 2hp compressor (2012)
- Wired for Electrasan holding tank system.
- Double Entry Engineroom Access

---

## Deck Equipment

---

- 11' Avon RIB Dingy w/ 9.8hp Nissan outboard
- Stainless Simpson davits w/ internal windlass on each and extendable arms
- Teak motor mount for dingy motor
- 5-step swim ladder
- Large Lazerette aft for storage
- Propane locker aft w/ (2) tanks
- Fishing rod holder
- Teak cockpit table w/ 4 drink holders
- Custom stainless arch w/ courtesy lighting
- Spreader lights
- New Sunbrella Bimini top designed to extend further forward of the dodger (9/2013)
- Dodger w/ new replacement eisenglass (9/2013 )
- Sunbrella handrail covers, hatch covers, new cockpit cushions with drain dry foam ( 2012)
- (3) Sunbrella windscoops for hatches - (Fwd, Aft, Stb side )
- Hull sides painted with Signature coating systems Hatteras White (2010)
- Topsides deck & house painted with Signature coating systems Hatteras White (2008)
- Bomar Hatches
- Salon windows were removed rebedded and enlarged to allow greater light in the cabin . Settings were redesigned with sandwich construction to eliminate future leaks.
- All portlights removed & rebedded (2010)
- All standing rigging rebedded & re-inforced with back bolts
- Chainplates and all new chainplate hardware replaced (2007)
- Custom designed Bow Pulpit with stronger stainless supports
- Balsa coring replaced with solid fiberglass (2013)
- 45lb CQR anchor w/ 150 feet 3/8" chain
- 45lb Danforth anchor w/ 25' chain & 250' 5/8" nylon rode
- Upgraded Ideal Windlass with 2500lb pull

---

## Electronics

---

- Garmin GPS65
- Raytheon RK3000 WAS/GPS
- Furuno 36-mile radar
- Link (Datamarine) 5000 sailing instruments
- Standard CMP847B VHF
- Autohelm ST7000 Autopilot w/ direct hydraulic drive to rudder (2 station)
- ICOM IC-M710 SSB
- ICOM IC-745 SSB
- Gateway laptop w/ Navigation program & all east coast charts interfaced to GPS & Autohelm
- (3) Jensen CD5050 CD/AM/FM- Salon, Master, Forward Cabin



- 22" LED TV w/ Direct TV Dish
- Danforth Compass
- Epirib 406
- Quartz Clock/ Barometer at Nav Station
- 7hp Vetus Bowthruster w/ upgraded 5 blade prop

---

## Galley

---

- Seaward 3-Burner LPG stove over broiler w/ remote gas shut off
- Hamilton Beach toaster oven
- GE turntable microwave built-in
- (2) Crosby 120V cold plate system w/ refrigerator & freezer ( freezer hold to -5F)
- Double SS Sink w/ Groan faucet
- Custom built spice rack
- Built-in dish rack/ holder w/ full service setting for 8
- Full assortment of pots/pans, utensils & more.

---

## Safety Equipment

---

- Man Overboard Module - ACR SM-2 ( new 9/2013)
- Lifesling ( new 9/2013 )
- Lifelines replaced (2012)
- AVON 6 man life raft w/ custom deck mount
- Horseshoe Life Ring
- Fire suppression Co2 system
- Emergency Tiller
- (3) approved hand held fire extinguishers
- Up to date flare signal set

---

## Sail Inventory

---

- 150% Genoa w/ Schaefer roller furling ( unit new in 2005 )
- Hood in-mast electric roller furling
- Gennaker Sail ( original in great condition)
- Mainsail ( original in great condition )
- Spare Mainsail ( original in great condition )
- Headsail ( original but recently redone )
- Anchor sail to minimize 'dancing' on a mooring or at anchor
- All standing rigging rebedded & reinforced & back bolted

---

## Cabin

---

### Main Cabin

- Teak & Holly sole throughout
- Dinette can seat up to 10 people w/ teak drop leaf table
- Stb side settee/ berth raises to create a bunk w/ storage below
- Separate access to forward head
- Custom enlarged side windows allow for plenty of natural light

### Aft Master Cabin

- Berth configuration can either be queen transverse or two twin in 'V' configuration
- New Mattress (2011)
- Full head w/ seaparate shower stall
- Courtesy lighting
- (8) storage drawers, (1) large hanging locker
- Built-in fans
- Large overhead hatch
- (3) opening portlights , (2) fixed portlights

### Forward Cabin

- 'V' Berth w/ filler
- Separate door to forward ensuite head & shower
- Access to Vetus 7hp bowthruster motor and control module
- Access to windlass motor and control module
- Access to group 30 12V battery w/ 10amp charger for windlass and bow thruster
- 3 Shelf linen closet
- Large overhead hatch
- (4) storage drawers, (1) large hanging locker

-Built-in fans

-(2) opening portlights

---

## Disclaimer

---

The Company offers the details of this vessel in good faith but cannot guarantee or warrant the accuracy of this information nor warrant the condition of the vessel. A buyer should instruct his agents, or his surveyors, to investigate such details as the buyer desires validated. This vessel is offered subject to prior sale, price change, or withdrawal without notice.

---

## Исключения

---

При продаже яхты исключаются личные вещи владельца.

---

## Отказ от ответственности

---

Компания предоставляет описание судна или яхты добросовестно, но не может гарантировать точность этой информации, а также не ручается за техническое состояние. Покупатель должен проинструктировать своих агентов или оценщиков исследовать представленную информацию более подробно, по собственному желанию. Продажа судна или яхты, изменение цены или снятие с продажи будет происходить без предварительного уведомления.

# ФОТОГРАФИИ

**50' Gulfstar port forward profile**



**50' Gulfstar starboard forward profile**



**50' Gulfstar forward profile**



**50' Gulfstar starboard aft profile**



**50' Gulfstar port aft profile**



**50' Gulfstar anchor windlass**



**50' Gulfstar foredeck**



**50' Gulfstar port side deck**



**50' Gulfstar starboard side deck**



**50' Gulfstar cockpit bimini-dodger**



**50' Gulfstar cockpit**



**50' Gulfstar cockpit forward**





50' Gulfstar cockpit aft



50' Gulfstar cockpit hatch



50' Gulfstar transom



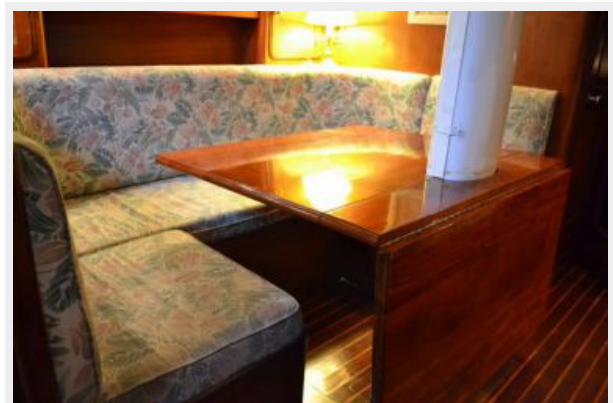
50' Gulfstar salon forward



50' Gulfstar salon aft



50' Gulfstar salon seating photo1



50' Gulfstar salon seating photo2



50' Gulfstar salon seating photo3



50' Gulfstar nav station photo1



50' Gulfstar nav station photo2



50' Gulfstar salon starboard



50' Gulfstar galley photo1





50' Gulfstar galley photo2



50' Gulfstar galley photo3



50' Gulfstar refrigeration photo1



50' Gulfstar refrigeration photo2



50' Gulfstar galley sink



50' Gulfstar master stateroom photo1





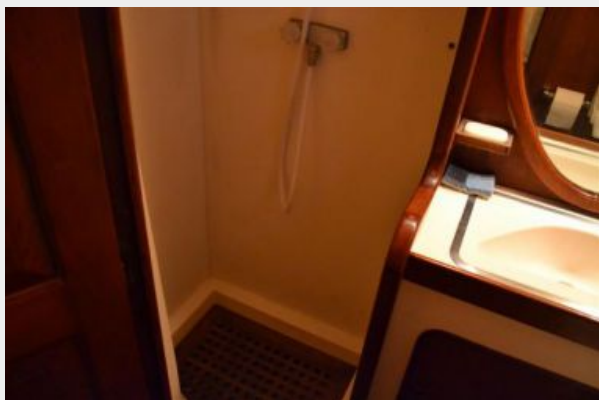
**50' Gulfstar master stateroom photo2**



**50' Gulfstar master stateroom head**



**50' Gulfstar master stateroom shower**



**50' Gulfstar guest stateroom**



**50' Gulfstar guest stateroom head**



**50' Gulfstar engine compartment access photo1**



50' Gulfstar engine compartment access photo2



50' Gulfstar auxiliary photo1



50' Gulfstar auxiliary photo2



50' Gulfstar generator



# КОНТАКТЫ

---

Андрей Шестаков (Andrey Shestakov) – ведущий яхтенный брокер отдела продаж яхт и судов компании Shestakov Yacht Sales Inc. Официальный представитель Shestakov Yacht Sales Inc. для русскоговорящих клиентов в центральном офисе компании в Майами/Форт Лодердейл/Флорида/США.

## Контактная информация

---

Email: [andrey@shestakovyachtsales.com](mailto:andrey@shestakovyachtsales.com)

Web: [shestakovyachtsales.com](http://shestakovyachtsales.com)

## Телефоны

---

Краснодарский край: **+7(918)465-66-44**

США, Майами, Флорида: **+1(954)274-4435**

## Время работы

---

Понедельник – Суббота: **9:00 - 21:00**  
EDT

Воскресенье: **Закрето**

## Адрес

---



Harbour Towne Marina, 850 NE 3rd St,  
STE 213, Dania, FL 33004