

BRANDI — HATTERAS



Судостроитель: HATTERAS

Год постройки: 2004

Модель: Моторная яхта

Цена: **ЦЕНА ЯХТЫ ПО ЗАПРОСУ**

Местонахождение: United States

Длина общая: 54' 0" (16.46m)

Ширина: 17' 3" (5.26m)

Макс. осадка: 4' 2" (1.27m)

Крейс. скорость: 27 Kts. (31 MPH)

Макс. скорость: 31 Kts. (36 MPH)

Купить **BRANDI — HATTERAS** а также выбрать подходящую вам яхту из нашего каталога яхт вам поможет опытный яхтенный брокер Андрей Шестаков. На сегодняшний день компания **Shestakov Yacht Sales Inc.** имеет большое количество яхт в собственном списке продаж, а также тесно сотрудничает со всеми крупными яхтенными производителями по всему миру.

Для того чтобы купить яхту **BRANDI — HATTERAS** а также проконсультироваться по любому вопросу связанному с покупкой, продажей, чартером яхт позвоните по телефону **+7(918)465-66-44**.

ОГЛАВЛЕНИЕ

ОГЛАВЛЕНИЕ	2
ХАРАКТЕРИСТИКИ	4
Обзор	4
Основная информация	4
Размеры	4
Скорость, вместимость и масса	4
Размещение	4
Корпус и палуба	5
Информация о двигателе	5
ПОДРОБНОЕ ОПИСАНИЕ	6
Exterior Vessel Walkthrough	6
Interior Vessel Walkthrough	6
Cockpit	7
Salon	8
Galley & Dinette	9
Companionway	9
Master Stateroom	10
Master Head	11
VIP Stateroom	11
Disclaimer	12
Исключения	12
Отказ от ответственности	12
ФОТОГРАФИИ	13
КОНТАКТЫ	18
Контактная информация	18
Телефоны	18
Время работы	18
Адрес	18

ХАРАКТЕРИСТИКИ

Обзор

The 54' Hatteras convertible is one of the best riding hulls that Hatteras has ever built. This has the half tower, which is preferred by most 54' Hatteras buyers. The owner has meticulously maintained Brandi with an open checkbook. She is a must see if you are looking for a sportfishing vessel in this size range!

Основная информация

Тип судна: Моторная яхта

Подкатегория: Convertible

Модельный год: 2004

Год постройки: 2004

Страна: United States

Размеры

Длина общая: 54' 0" (16.46m)

Ширина: 17' 3" (5.26m)

Макс. осадка: 4' 2" (1.27m)

Скорость, вместимость и масса

Крейс. скорость: 27 Kts. (31 MPH)

Макс. скорость: 31 Kts. (36 MPH)

Вместимость воды: 190 Gallons

Вместимость сточного бака: 91 Gallons

Объем топливного бака: 1250 Gallons

Размещение

Всего кают: 2

Корпус и палуба

Материал корпуса: Fiberglass

Информация о двигателе

Двигатели: 2

Производитель: Caterpillar

Модель: C-18

Тип двигателя: Inboard

Тип топлива: Diesel

ПОДРОБНОЕ ОПИСАНИЕ

Exterior Vessel Walkthrough

The thrill of the hunt. The wonders of the deep. The beauty of a red sun slipping slowly beneath the horizon. For you the call of the sea is undeniable. Isn't it time to answer with this 54' Hatteras Convertible you can.

First and foremost, you are taken care of yacht to shore. This Hatteras is equipped with a 2005 Boston Whaler 11 sport with a 25 hp Mercury 4 stroke engine on it's chocks.No doubt about it, this 54' convertible is designed for the serious angler. Just a casual exploration of the 149 square foot cockpit will excite anyone who yearns for a new trophy.

Every inch of the cockpit is planned with the angler in mind. She has a bait and tackle center; a double sized bait freezer; 80" fish box with macerator, eskimo ice chipper; Rupp outriggers; rocket launcher; and many other features. The cockpit is roomy enough that everyone will be able to join the action without getting tangled up in each other's way.

Comfort is an important feature of the flybridge as well. With 150 square feet, the flybridge has plenty of room for everyone. You can open the four sided Barrett enclosure and enjoy the invigoration of the sea air, or close up and relax in the air conditioned comfort. Whatever you prefer, the view from here is picture perfect. You have a console that raises and lowers to keep the electronics tucked away from the elements when you are not underway. When the console is down, it gives you an table top, to have dinner and drinks on the flybridge, and to watch the sunset. Two release marine helm chairs provide comfortable seating for the captain and a guest, and their aft position affords an unobstructed view of the cockpit and waters to either side. Just as in the cockpit, every space is utilized here with stowage beneath the seats and an insulated drink box forward.

Interior Vessel Walkthrough

Even the most avid angler will want a break from the sun and sea from time to time. As surely as the cockpit and flybridge are designed for action, the interior spaces of Brandi are designed for relaxation. The high gloss cherry interior is beautifully mated with a neutral palette. Accents of blue and gold add richness to the decor, as does the custom decorative lighting package.

Upon entering the salon, an L shaped sofa in ultra leather is to port. Storage beneath the loose cushions is easily accessible yet discreet. The entertainment center with a 34" Sharp tv, dvd and cd player, and surround sound speakers are also starboard. Dimmable lights and directed air delivery through slotted wood cornices allow you to control the atmosphere.

The galley is forward and opens into the salon allowing conversation to flow freely. Though beautifully fitted with old gold granite, genuine cherry wood cabinets, cherry fascia on

appliances, and Amtico flooring. This is purely a functional space with enough room to conjure up meals of exquisite sophistication. She is equipped with a four burner cook top, garbage disposal, ice maker, U line wine cooler, and subzero freezer and refrigerator drawer units. An upper cabinet opens to reveal a microwave and convection oven. The dinette with L shaped seating and storage is starboard.

The lower deck is masterfully arranged to maximize every available space resulting in accommodations that feel as if they belong on a much larger yacht. As you descend the steps from the galley, the master stateroom lies to port. The queen sized berth lifts up to reveal cedar lined storage. Bowed front dressers and nightstands provide additional storage as well. This stateroom has a 20" LCD TV, am and fm stereo, dvd, and cd player. The ensuite head is surprisingly spacious with stand up shower, onyx counter tops and back splashes and additional storage underneath.

She has the optional split bow arrangement in the forward VIP stateroom. The full size lower berth to port has storage underneath. The raised single berth is to starboard. Features of this room include: ensuite head, cedar lined hanging lockers, entertainment center with 15" TV, dvd and cd player, washer and dryer combo.

The guest stateroom with side by side twin berths to starboard. Though this room shares a head with the bow stateroom, it has private access. A double cedar lined locker and bowed front nightstand with drawers provide storage. This stateroom also has an entertainment center with 12" LCD TV and DVD/CD player. All staterooms have HMC mattresses, individual air conditioning controls, reading lights and full length mirrors.

One last thing Hatteras writes, "Thanks to her sophisticated design, solid construction, creature comforts and open ocean performance, you can indeed have it all with the 54 Convertible." So, the next time you hear the call of the sea, feel free to answer

Cockpit

- Molded fiberglass 149 square feet
- ISO standard scuppers in cockpit and cockpit hatches
- Polished anodized aluminum ladder to flybridge with acrylic steps
- Transom door
- Retractable shore cord and extra shore cord both 50 AMP
- Seawater and freshwater wash down outlets with Hatteras patented quick disconnect
- Shore water connection with pressure reducing valve and Hatteras patented quick disconnect
- Bait and tackle drawers
- 5.4 cubic foot bait freezer
- Removable fish box with macerator, flush in deck

- Hatch with chrome plated brass lock to engine compartment
- Storage in steps to deck house
- Port and starboard hatches to lazarette and fuel tank connections
- Fiberglass cockpit boarding step box with storage
- DC overhead lights under flybridge overhang
- Telephone and CATV inlet
- Polished stainless steel rod holders, flush mount, set of 4
- Stereo speakers with volume control
- Remote control for clarion bridge stereo
- Cockpit coaming Light
- Upgrade: eskimo ice chipper plumbed to port side with deep insulated box behind bridge ladder
- Upgrade: rupp double spreader outriggers
- Upgrade: liftup coaming gate
- Upgrade: cockpit splash camera
- Upgrade: release marine rocket launcher with high polished stainless steel pedestal and stainless steel deck plate with cover
- Upgrade freshwater and saltwater wash down with quick disconnect

Salon

- Carpeting
- Whisper wall headliner
- Finished wood bulkheads with satin or high gloss polyester finish in genuine cherry
- Fluted wood valances with duets blinds
- Fixed frameless windows with tinted safety glass
- U line icemaker
- Telephone outlet
- AC and DC light fixtures
- AC dimmable lights
- AC duplex outlets
- Electric panels
- Polk stereo speakers
- Custom L shaped lounge with rod storage, loose cushions, arm rests and double needle stitching
- Throw pillows
- Polished stainless steel threshold at salon door
- Air conditioning dispersed through fluted valances, port and starboard
- Smoke detector
- Hinged glass door to cockpit
- Carbon monoxide detector
- Upgrade: dvd and satellite TV Entertainment Center including Sharp 34" LCD TV Yamaha
- Am and Fm stereo receiver with Yamaha DVD/CD player and five speakers surround

sound

- Upgrade: new canvas carpet runner
- Upgrade: new SAT Receiver
- Custom salon camera
- Custom electric panels 60 CV dual panel
- Custom decorative lighting package

Galley & Dinette

- Amtico vinyl strip flooring
- Whisper wall headliner
- Fluted wood valances with duet blinds
- Upgrade L shaped dinette with storage under seat and old gold granite top
- Fixed frame less windows with tinted safety glass
- Upgrade old gold granite counter tops with under mount sink and storage cabinets cherry high gloss
- AC under counter refrigerator and freezer drawer units
- AC four burner ceramic cook top
- Sharp microwave and convection oven covered by cabinet door
- One half hp continuous feed garbage disposal
- L shaped dinette with storage under seat
- Electric water level gauge
- AC and DC light fixtures
- AC dimmable lights
- AC duplex outlets
- Upgrade stainless steel sink and faucet
- Throw pillows
- Telephone outlet
- Air conditioning dispersed through fluted wood valances, port and starboard
- 6 drawers in galley
- Genuine wood inserts to match interior finish on appliance fascia cherry high gloss
- Under counter subzero refrigerators 2 drawers and subzero freezers 2 drawer
- Upgrade u line wine chiller

Companionway

- Carpeting
- Whisper wall headliner
- Wall covering
- DC light fixture
- Flush panel genuine wood doors to match interior finish, with door stops, to master stateroom, guest and bow staterooms, and guest head

- Steps to salon
- Access to port and starboard storage with DC light
- Upgrade new sunbrella carpet liner for companionway steps

Master Stateroom

- Carpeting
- Whisper wall headliner
- Wall covering
- Finished wood bulkheads with satin or high gloss polyester finish in genuine cherry, African mahogany or high gloss maple
- Fluted wood valance
- Padded covering on hull side
- Concealed pocket door from companionway
- Queen sized tapered berth with upholstered headboard and cedar lined storage underneath accessed via pneumatic cylinders
- Upholstered berth base
- Upgrade HMC Innerspring mattress (in lieu of Poly foam mattress), spread, throw pillows, pillows, pillow shams, mattress pad and sheets
- Cedar lined hanging locker with doors, shelf and automatic light
- Nightstands with drawers
- Bowed dresser with drawers and cabinet
- AC and DC light fixtures
- AC dimmable lights
- AC duplex outlets
- TV Master
- DC Am and Fm stereo receiver with cd and dvd changer
- Clarion with remote
- Stereo speakers
- Telephone outlet
- Full length mirror
- Clear plexi mirror (aft bulkhead)
- Private access to head with door stop
- Carbon monoxide detector
- Outboard storage cabinets
- Air conditioning dispersed through fluted valance
- Smoke detector
- DC low voltage lights behind valance
- SMX HVAC compartment controlled
- Upgrade new sat tv receiver
- Custom Artwork
- 230 volt AC 20 gallon electric water heater under bunk
- Upgrade 20" Sharp LCD with MATV outlet lighting package interfaced with GPS, Plotter.

radar, and fish finder of flybridge

Master Head

- Upgrade Amtico vinyl-strip flooring
- Whisper wall headliner
- Wall covering
- Upgrade onyx top with backsplash, side splash and integral sink over storage cabinet made of genuine high gloss cherry wood
- Linen storage cabinets (master)
- Hardwood base boards
- Stall shower with seat, door and automatic enclosed sump pump
- Storage cabinet with mirror
- Screened overhead ventilator hatch with privacy cover
- Towel bar
- Headhunter freshwater toilet
- 120 volt AC air freshener blower
- AC and DC light fixtures
- AC duplex outlet
- Plexi mirror around upper cabinet
- DC low voltage lights under toe kicks (master head only)
- Air conditioning discharge
- Holding tank 3/4 full indicator lights

VIP Stateroom

- Carpeting
- Whisper wall headliner
- Wall covering
- Finished wood bulkheads with high gloss polyester finish in genuine cherry
- Whisper wall padded panels on hull side
- Custom split bed setup
- Upholstered berth base
- Upgrade HMC innerspring mattresses in lieu of poly foam, spread, throw pillows, pillows, pillow shams, mattress pad and sheets
- Carbon monoxide detector
- Cedar lined hanging and storage lockers with automatic light
- Screened overhead hatch with privacy cover
- Nightstands with storage accessed by hinged lids, port and starboard
- AC and DC light fixtures
- AC dimmable lights
- AC duplex outlets

- Full length mirror
- Clear plexi mirror (forward bulkhead)
- Washer and dryer Whirlpool Stack
- Upgrade 15" Sharp LCD TV DC am and fm stereo receiver and CD
- Private access to head with door stop
- Smoke detector
- DC low voltage lights behind valance
- Air conditioning dispersed through fluted wood valances, port and starboard
- Linen storage, port
- SMX HVAC compartment controlled
- Overhead storage lockers, port and starboard
- Custom artwork
- Nightstands port and starboard

Disclaimer

The Company offers the details of this vessel in good faith but cannot guarantee or warrant the accuracy of this information nor warrant the condition of the vessel. A buyer should instruct his agents, or his surveyors, to investigate such details as the buyer desires validated. This vessel is offered subject to prior sale, price change, or withdrawal without notice.

Исключения

При продаже яхты исключаются личные вещи владельца.

Отказ от ответственности

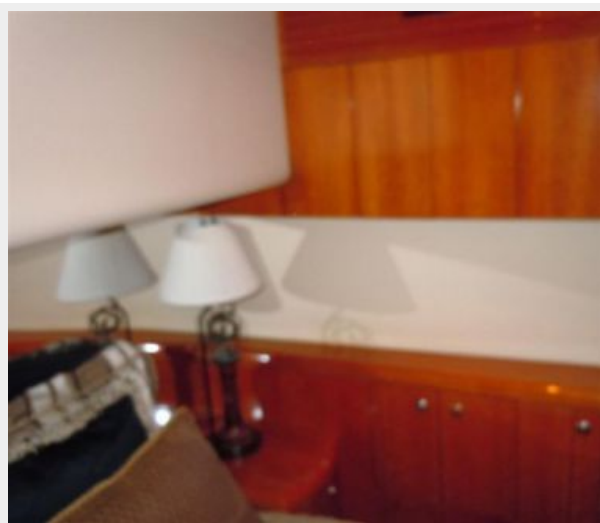
Компания предоставляет описание судна или яхты добросовестно, но не может гарантировать точность этой информации, а также не ручается за техническое состояние. Покупатель должен проинструктировать своих агентов или оценщиков исследовать представленную информацию более подробно, по собственному желанию. Продажа судна или яхты, изменение цены или снятие с продажи будет происходить без предварительного уведомления.

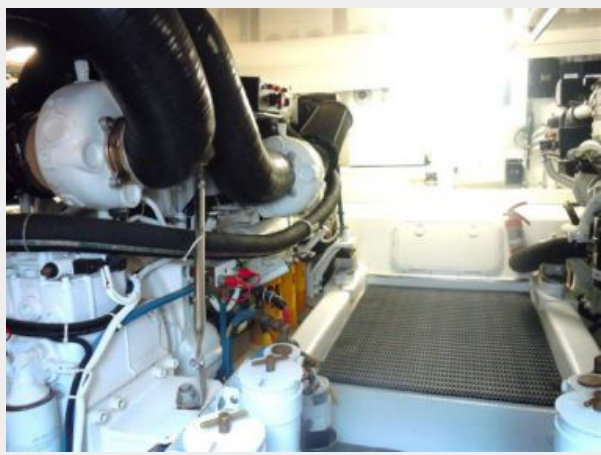
ФОТОГРАФИИ











КОНТАКТЫ

Андрей Шестаков (Andrey Shestakov) – ведущий яхтенный брокер отдела продаж яхт и судов компании Shestakov Yacht Sales Inc. Официальный представитель Shestakov Yacht Sales Inc. для русскоговорящих клиентов в центральном офисе компании в Майами/Форт Лодердейл/Флорида/США.

Контактная информация

Email: andrey@shestakovyachtsales.com

Web: shestakovyachtsales.com

Телефоны

Краснодарский край: **+7(918)465-66-44**

США, Майами, Флорида: **+1(954)274-4435**

Время работы

Понедельник – Суббота: **9:00 - 21:00**
EDT

Воскресенье: **Закрето**

Адрес



Harbour Towne Marina, 850 NE 3rd St,
STE 213, Dania, FL 33004