

GRAND EAGLE — BAYLINER



Судостроитель: BAYLINER

Год постройки: 2000

Модель: Моторная яхта

Цена: **ЦЕНА ЯХТЫ ПО ЗАПРОСУ**

Местонахождение: United States

Длина общая: 47' 0" (14.33m)

Ширина: 14' 11" (4.55m)

Мин. осадка: 3' 4" (1.02m)

Макс. осадка: 3' 4" (1.02m)

Крейс. скорость: 17 Kts. (20 MPH)

Макс. скорость: 22 Kts. (25 MPH)

Купить **Grand Eagle — BAYLINER** а также выбрать подходящую вам яхту из нашего каталога яхт вам поможет опытный яхтенный брокер Андрей Шестаков. На сегодняшний день компания **Shestakov Yacht Sales Inc.** имеет большое количество яхт в собственном списке продаж, а также тесно сотрудничает со всеми крупными яхтенными производителями по всему миру.

Для того чтобы купить яхту **Grand Eagle — BAYLINER** а также проконсультироваться по любому вопросу связанному с покупкой, продажей, чартером яхт позвоните по телефону **+7(918)465-66-44**.

ОГЛАВЛЕНИЕ

ОГЛАВЛЕНИЕ	2
ХАРАКТЕРИСТИКИ	6
Обзор	6
Основная информация	6
Размеры	6
Скорость, вместимость и масса	6
Размещение	6
Корпус и палуба	7
Информация о двигателе	7
ПОДРОБНОЕ ОПИСАНИЕ	8
47' Bayliner Overview	8
47' Bayliner Vessel Walkthrough	8
47' Bayliner Accommodations	8
47' Bayliner Salon	8
47' Bayliner Galley	8
47' Bayliner Dining	9
47' Bayliner Master Stateroom	9
47' Bayliner Port Forward Guest Stateroom	9
47' Bayliner Port Aft Guest Stateroom	9
47' Bayliner Laundry	9
47' Bayliner Flybridge	9
47' Bayliner Aftdeck	10
47' Bayliner Audio/Visual Equipment	10
47' Bayliner Electronics	10
47' Bayliner Electrical Systems	10
47' Bayliner Engine/Mechanical Equipment	11
47' Bayliner Deck Equipment	11
47' Bayliner Tender	12

47' Bayliner Safety & Fire Protection	12
47' Bayliner Exclusions	12
47' Bayliner Disclaimer	12
Исключения	13
Отказ от ответственности	13
ФОТОГРАФИИ	14
47' Bayliner port forward profile	14
47' Bayliner port aft profile	14
47' Bayliner aft profile	14
47' Bayliner anchor windlass	14
47' Bayliner foredeck	15
47' Bayliner foredeck aft	15
47' Bayliner port side deck	15
47' Bayliner starboard side deck	15
47' Bayliner flybridge aft	15
47' Bayliner flybridge forward	15
47' Bayliner flybridge helm	16
47' Bayliner flybridge port seating	16
47' Bayliner flybridge starboard seating	16
47' Bayliner flybridge wetbar	16
47' Bayliner tender	16
47' Bayliner aftdeck	16
47' Bayliner swimplatform	17
47' Bayliner salon forward	17
47' Bayliner salon aft	17
47' Bayliner salon port	17
47' Bayliner salon starboard seating	17
47' Bayliner salon wetbar	17
47' Bayliner galley	18

47' Bayliner pilothouse forward	18
47' Bayliner pilothouse port	18
47' Bayliner pilothouse starboard	18
47' Bayliner pilothouse helm	18
47' Bayliner master stateroom	18
47' Bayliner master stateroom port	19
47' Bayliner master stateroom starboard	19
47' Bayliner master stateroom head	19
47' Bayliner port forward guest stateroom	19
47' Bayliner port aft guest stateroom photo1	19
47' Bayliner port aft guest stateroom photo2	19
47' Bayliner guest head	20
47' Bayliner guest stateroom shower	20
47' Bayliner washer-dryer	20
47' Bayliner engine room access	20
47' Bayliner port main engine	21
47' Bayliner engine room aft	21
47' Bayliner port fuel filter	21
47' Bayliner starboard main engine	21
47' Bayliner starboard fuel filter	22
47' Bayliner fuel manifold	22
47' Bayliner water heater	22
47' Bayliner electrical panel	22
47' Bayliner generator	23
47' Bayliner layout	23
КОНТАКТЫ	24
Контактная информация	24
Телефоны	24
Время работы	24

Адрес

24

ХАРАКТЕРИСТИКИ

Обзор

Grand Eagle is a well-maintained 2000 47' Bayliner 4788 raised pilothouse motoryacht. She offers a 3 stateroom two head layout, low hour Cummins main engines, a large flybridge and aftdeck and a beautifully appointed interior. Sellers have started a new company, so they will not get to use Grand Eagle as planned. She is a perfect Great Loop candidate. Price reduced!

Основная информация

Тип судна: Моторная яхта	Подкатегория: Pilothouse
Модельный год: 2000	Год постройки: 2000
Страна: United States	Открытая палуба мостика: Да

Размеры

Длина общая: 47' 0" (14.33m)	Ширина: 14' 11" (4.55m)
Мин. осадка: 3' 4" (1.02m)	Макс. осадка: 3' 4" (1.02m)
Трапы: 18' 2" (5.54m)	

Скорость, вместимость и масса

Крейс. скорость: 17 Kts. (20 MPH)	Макс. скорость: 22 Kts. (25 MPH)
Водоизмещение: 29900 Pounds	Вместимость воды: 200 Gallons
Вместимость сточного бака: 48 Gallons	Объем топливного бака: 445 Gallons

Размещение

Всего кают: 3	Всего коек: 4
Спальные места: 6	Всего ком. состава: 2

Корпус и палуба

Материал корпуса: Fiberglass

Материал палубы: Composite Fiberglass

Комплектация корпуса: Modified V-Hull

Цвет корпуса: White

Отделка корпуса: Plastic

Информация о двигателе

Двигатели: 2

Производитель: Cummins

Модель: BTA5.9-M3

Тип двигателя: Inboard

Тип топлива: Diesel

ПОДРОБНОЕ ОПИСАНИЕ

47' Bayliner Overview

Grand Eagle is a well-maintained 2000 47' Bayliner 4788 raised pilothouse motoryacht. She offers a 3 stateroom two head layout, low hour Cummins main engines, a large flybridge and aftdeck and a beautifully appointed interior. Sellers have started a new company, so they will not get to use Grand Eagle as planned. She is a perfect Great Loop candidate. Price reduced!

47' Bayliner Vessel Walkthrough

Entering the covered aftdeck through the transom door from the swimplatform, you will find deck hatches for access to the generator and storage and then the sliding door to the salon. Once inside the salon, you will find wrap-around seating and a folding teak table to starboard, a wetbar starboard forward, two lounge chairs and a table to port and the galley port forward. Walk forward and you can step up to the raised pilothouse, which has two side deck doors and interior steps to the flybridge. Step down into the guest companionway and you will find the guest head to starboard, two guest stateroom to port, and the master stateroom forward.

47' Bayliner Accommodations

Grand Eagle offers a master stateroom forward with an island queen size berth and ensuite head, a guest stateroom just aft of the master stateroom to port with a single lower berth and a pullman upper berth and then a port aft guest stateroom offering a queen size berth. The guest head with enclosed shower is to starboard. The removable wall between the port forward guest stateroom and the master stateroom has been removed and placed in storage, but it is still available.

47' Bayliner Salon

The salon is very open and airy due to the large side windows, sliding glass door and window aft and the open stairs to the pilothouse. There is wrap-around seating and folding teak table starboard aft, a wetbar starboard forward, 2 lounge chairs to port and the galley port forward. There is carpet and there are blinds on all the windows.

47' Bayliner Galley

The galley is located port forward in the salon.

- Princess 3-burner electric cooktop and oven
- Norcold 12/24vdc/120vac refrigerator/freezer

- GE Spacemaker XL1400 microwave oven
- Frigidaire trash compactor
- Double stainless steel sinks
- Solid surface countertop
- U-Line icemaker in the salon
- Stainless steel sink in the salon wetbar
- Magma stainless steel BBQ grill on the flybridge

47' Bayliner Dining

Dining space is available at the folding teak tables in the salon and the pilothouse.

47' Bayliner Master Stateroom

The master stateroom is forward and offers an island queen size berth, reading lights, 4 portlights, 2 overhead hatches, 2 hanging lockers, storage cabinets, drawers and shelves, carpet and an ensuite head with a tub/shower.

47' Bayliner Port Forward Guest Stateroom

The port forward guest stateroom offers a single lower berth with pullman upper berth, hanging locker, full length mirror, 2 portlights and carpet. The removable wall between this stateroom and the master stateroom has been removed and stored, which is common on this model. It can easily be reinstalled. The guest head is to starboard and offers an enclosed shower.

47' Bayliner Port Aft Guest Stateroom

The port aft stateroom offers a queen size berth, nightstand, hanging locker, shelf, 2 portlights, reading lights and carpet. The guest head is to starboard and offers an enclosed shower.

47' Bayliner Laundry

- Splendide Comb-O-Matic washer/dryer

47' Bayliner Flybridge

The flybridge offers a full helm forward, helmseat, wrap-around seating to port, a benchseat to starboard, a wetbar starboard aft, non-skid deck, bimini, Radar arch and a Magma stainless steel BBQ grill. There is a ladder to the aftdeck.

47' Bayliner Aftdeck

The covered aftdeck offers a non-skid deck, transom door, ladder to the flybridge, Eisenglass enclosure and a sliding glass door to the salon.

47' Bayliner Audio/Visual Equipment

- KVH Tracvision M1 satellite TV system (2010)
- Mitsubishi TV in the salon
- JVC 5-disc CD changer in the salon
- JVC RX5000V audio/visual receiver in the salon
- JVC stereo/cassette player in the master stateroom
- Panasonic TV/VHS in the master stateroom

47' Bayliner Electronics

- Raytheon R21XX Raster Scan Radar in the pilothouse
- Raytheon RL70 Radar repeater on the flybridge
- Raytheon RC520 chart plotter in the pilothouse
- Raytheon ST60 depth sounder in the pilothouse
- Raytheon ST60 speed log in the pilothouse
- Raytheon ST6000+ autopilot in the pilothouse
- Danforth Constellation magnetic compass in the pilothouse and on the flybridge
- Icom IC-M127 VHF in the pilothouse

47' Bayliner Electrical Systems

- Westerbeke BTDA 12.5 kW generator with 592 hours

- Battery charger
- 1 8D house battery
- 2 X 8D start batteries
- 2 X 30 amp shore cords
- 1 X 50 amp shore cord

47' Bayliner Engine/Mechanical Equipment

- Twin Cummins B5.9-M3 370 hp main engines with 936 hours
- ZF Hurth HSW800 gearboxes
- Engine synchronizer
- Faria gauges
- Hynautic hydraulic steering system
- Bennett trim tabs
- Marine Air Systems reverse cycle air conditioning/heating system
- King electric heating system
- Seaward 20 gallon water heater
- Tankwatch tank level monitoring system
- Jabsco maserator pump
- 24" X 21" 4-bladed Bronze propellers
- 2" stainless steel shafts

47' Bayliner Deck Equipment

- Muir Cougar anchor windlass with foot controls and helm controls
- Plow type anchor
- Bow pulpit
- Stainless Steel rails

- Stainless steel deck hardware
- Stainless steel fender racks on the foredeck
- Foredeck benchseat
- Non-skid decks
- Windshield cover
- Bomar deck hatches

47' Bayliner Tender

- Nautica 12' RIB
- Yamaha 30 hp outboard
- Tender davit

47' Bayliner Safety & Fire Protection

- Searchlight
- Fireboy emergency engine shutdown system
- Fireboy engine room fire suppression system
- Life jackets
- Fire extinguishers

47' Bayliner Exclusions

- Sellers' personal belongings

47' Bayliner Disclaimer

The Company offers the details of this vessel in good faith but cannot guarantee or warrant the accuracy of this information nor warrant the condition of the vessel. A buyer should instruct his agents, or his surveyors, to investigate such details as the buyer desires validated. This vessel is offered subject to prior sale, price change, or withdrawal without notice.

Исключения

При продаже яхты исключаются личные вещи владельца.

Отказ от ответственности

Компания предоставляет описание судна или яхты добросовестно, но не может гарантировать точность этой информации, а также не ручается за техническое состояние. Покупатель должен проинструктировать своих агентов или оценщиков исследовать представленную информацию более подробно, по собственному желанию. Продажа судна или яхты, изменение цены или снятие с продажи будет происходить без предварительного уведомления.

ФОТОГРАФИИ

47' Bayliner port forward profile



47' Bayliner port aft profile



47' Bayliner aft profile



47' Bayliner anchor windlass



47' Bayliner foredeck



47' Bayliner foredeck aft



47' Bayliner port side deck



47' Bayliner starboard side deck



47' Bayliner flybridge forward



47' Bayliner flybridge aft



47' Bayliner flybridge helm



47' Bayliner flybridge port seating



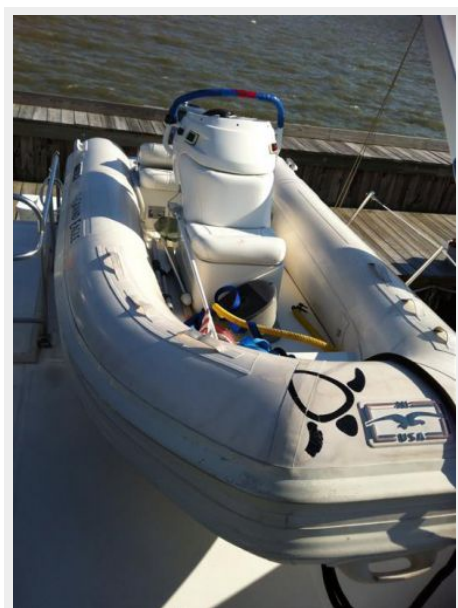
47' Bayliner flybridge starboard seating



47' Bayliner flybridge wetbar



47' Bayliner tender



47' Bayliner aftdeck



47' Bayliner swimplatform



47' Bayliner salon forward



47' Bayliner salon aft



47' Bayliner salon port



47' Bayliner salon starboard seating



47' Bayliner salon wetbar



47' Bayliner galley



47' Bayliner pilothouse forward



47' Bayliner pilothouse port



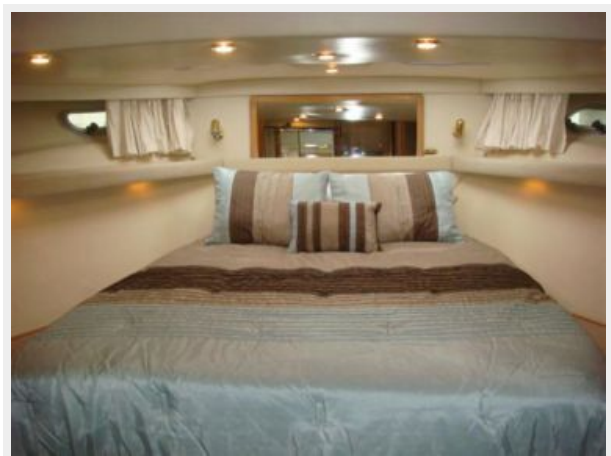
47' Bayliner pilothouse starboard



47' Bayliner pilothouse helm



47' Bayliner master stateroom



47' Bayliner master stateroom port



47' Bayliner master stateroom starboard



47' Bayliner master stateroom head



47' Bayliner port forward guest stateroom



47' Bayliner port aft guest stateroom photo1 47' Bayliner port aft guest stateroom photo2



47' Bayliner guest head



47' Bayliner guest stateroom shower



47' Bayliner washer-dryer



47' Bayliner engine room access



47' Bayliner engine room aft



47' Bayliner port main engine



47' Bayliner port fuel filter



47' Bayliner starboard main engine



47' Bayliner starboard fuel filter



47' Bayliner fuel manifold



47' Bayliner water heater



47' Bayliner electrical panel



47' Bayliner generator



47' Bayliner layout



КОНТАКТЫ

Андрей Шестаков (Andrey Shestakov) – ведущий яхтенный брокер отдела продаж яхт и судов компании Shestakov Yacht Sales Inc. Официальный представитель Shestakov Yacht Sales Inc. для русскоговорящих клиентов в центральном офисе компании в Майами/Форт Лодердейл/Флорида/США.

Контактная информация

Email: andrey@shestakovyachtsales.com

Web: shestakovyachtsales.com

Телефоны

Краснодарский край: **+7(918)465-66-44**

США, Майами, Флорида: **+1(954)274-4435**

Время работы

Понедельник – Суббота: **9:00 - 21:00**
EDT

Воскресенье: **Закрито**

Адрес



Harbour Towne Marina, 850 NE 3rd St,
STE 213, Dania, FL 33004