

HENRI CLAIR — CT YACHTS



Судостроитель: CT YACHTS

Год постройки: 1987

Модель: Траулер

Цена: **ЦЕНА ЯХТЫ ПО ЗАПРОСУ**

Местонахождение: United States

Длина общая: 36' 0" (10.97m)

Ширина: 12' 0" (3.66m)

Мин. осадка: 3' 6" (1.07m)

Макс. осадка: 3' 6" (1.07m)

Крейс. скорость: 8 Kts. (9 MPH)

Макс. скорость: 9 Kts. (10 MPH)

Купить **Henri Clair — CT YACHTS** а также выбрать подходящую вам яхту из нашего каталога яхт вам поможет опытный яхтенный брокер Андрей Шестаков. На сегодняшний день компания **Shestakov Yacht Sales Inc.** имеет большое количество яхт в собственном списке продаж, а также тесно сотрудничает со всеми крупными яхтенными производителями по всему миру.

Для того чтобы купить яхту **Henri Clair — CT YACHTS** а также проконсультироваться по любому вопросу связанному с покупкой, продажей, чартером яхт позвоните по телефону **+7(918)465-66-44**.

ОГЛАВЛЕНИЕ

ОГЛАВЛЕНИЕ	2
ХАРАКТЕРИСТИКИ	5
Обзор	5
Основная информация	5
Размеры	5
Скорость, вместимость и масса	5
Размещение	5
Корпус и палуба	6
Информация о двигателе	6
ПОДРОБНОЕ ОПИСАНИЕ	7
36' CT Trawler Overview	7
36' CT Trawler Vessel Walkthrough	7
36' CT Trawler Accommodations	7
36' CT Trawler Salon	7
36' CT Trawler Galley	7
36' CT Trawler Dining	8
36' CT Trawler Master Stateroom	8
36' CT Trawler Guest Stateroom	8
36' CT Trawler Flybridge	8
36' CT Trawler Audio/Visual Equipment	8
36' CT Trawler Electronics	9
36' CT Trawler Electrical System	9
36' CT Trawler Engine/Mechanical Equipment	9
36' CT Trawler Deck Equipment	10
36' CT Trawler Safety & Fire Protection	10
36' CT Trawler Exclusions	11
36' CT Trawler Disclaimer	11
Исключения	11

Отказ от ответственности	11
ФОТОГРАФИИ	12
36' CT Trawler port profile	12
36' CT Trawler port forward profile	12
36' CT Trawler port aft profile	12
36' CT Trawler overhead	12
36' CT Trawler anchor windlass	13
36' CT Trawler starboard forward profile	13
36' CT Trawler foredeck	13
36' CT Trawler foredeck aft	13
36' CT Trawler port side deck photo1	14
36' CT Trawler port side deck photo2	14
36' CT Trawler starboard side deck photo1	14
36' CT Trawler starboard side deck photo2	14
36' CT Trawler flybridge forward	15
36' CT Trawler flybridge covered	15
36' CT Trawler flybridge aft	15
36' CT Trawler flybridge helm	15
36' CT Trawler trunk cabin forward	15
36' CT Trawler trunk cabin aft	15
36' CT Trawler cockpit port	16
36' CT Trawler cockpit starboard	16
36' CT Trawler cockpit-master stateroom hatch	16
36' CT Trawler salon forward	16
36' CT Trawler salon aft	17
36' CT Trawler salon seating	17
36' CT Trawler salon port aft	17
36' CT Trawler galley photo1	17
36' CT Trawler galley photo2	18

36' CT Trawler lower helm	18
36' CT Trawler master stateroom port	18
36' CT Trawler master stateroom	18
36' CT Trawler master stateroom starboard	18
36' CT Trawler master stateroom forward	18
36' CT Trawler master stateroom head	19
36' CT Trawler master stateroom shower	19
36' CT Trawler guest stateroom head	19
36' CT Trawler guest stateroom	19
36' CT Trawler engine room	20
36' CT Trawler engine room port aft	20
36' CT Trawler engine room starboard aft	20
36' CT Trawler main engine photo1	20
36' CT Trawler main engine photo2	20
36' CT Trawler Racor fuel filters	20
36' CT Trawler fuel polishing system	21
36' CT Trawler new fuel tank	21
36' CT Trawler electrical panel	21
36' CT Trawler water heater	21
36' CT Trawler inverter	22
36' CT Trawler layout	22
36' CT Trawler hauled out photo1	22
36' CT Trawler hauled out photo2	22
КОНТАКТЫ	23
Контактная информация	23
Телефоны	23
Время работы	23
Адрес	23

ХАРАКТЕРИСТИКИ

Обзор

Henri Clair is a very well-maintained double cabin trawler with a fuel efficient single Volvo 150 hp main engine with low hours. Numerous updates include bow & stern thrusters, refurbished teak decks, new fuel tanks, fuel polishing system, 2000 watt inverter/charger, stainless steel mast and boom with roller furling steadying sail, updated galley, fiberglass interior headliner and a beautifully varnished interior. This is just a highlight of the many reasons to inspect Henri Clair, including the attractive asking price. Price reduced!

Основная информация

Тип судна: Траулер	Подкатегория: Aft Cabin
Модельный год: 1987	Год постройки: 1987
Страна: United States	Открытая палуба мостика: Да

Размеры

Длина общая: 36' 0" (10.97m)	Ширина: 12' 0" (3.66m)
Мин. осадка: 3' 6" (1.07m)	Макс. осадка: 3' 6" (1.07m)

Скорость, вместимость и масса

Крейс. скорость: 8 Kts. (9 MPH)	Макс. скорость: 9 Kts. (10 MPH)
Водоизмещение: 18000 Pounds	Вместимость воды: 200 Gallons
Вместимость сточного бака: 40 Gallons	Объем топливного бака: 300 Gallons

Размещение

Всего кают: 2	Всего коек: 3
Спальные места: 4	Всего ком. состава: 2

Корпус и палуба

Материал корпуса: Fiberglass

Материал палубы: Composite Fiberglass

Комплектация корпуса: Semi-Displacement

Отделка корпуса: Stainless Steel

Информация о двигателе

Двигатели: 1

Производитель: Volvo

Модель: TAMD41A

Тип двигателя: Inboard

Тип топлива: Diesel

ПОДРОБНОЕ ОПИСАНИЕ

36' CT Trawler Overview

Henri Clair is a very well-maintained double cabin trawler with a fuel efficient single Volvo 150 hp main engine with low hours. Numerous updates include bow & stern thrusters, refurbished teak decks, new fuel tanks, fuel polishing system, 2000 watt inverter/charger, stainless steel mast and boom with roller furling steadying sail, updated galley, fiberglass interior headliner and a beautifully varnished interior. This is just a highlight of the many reasons to inspect Henri Clair, including the attractive asking price.

36' CT Trawler Vessel Walkthrough

Entering the salon through the starboard side deck door, you will find the lower helm starboard forward, a wrap-around settee starboard aft, the galley port forward and a built-in seat and cabinetry port aft. The master stateroom entrance is aft and the guest stateroom entrance is forward. Engine room access is through salon sole hatches. The flybridge is accessed via a few steps up from the aftdeck to the trunk cabin top and then up to the flybridge.

36' CT Trawler Accommodations

Henri Clair offers a full beam master stateroom aft with a full size berth with custom mattress and ensuite head and a guest stateroom forward with a v-berth, insert, custom mattress and ensuite head.

36' CT Trawler Salon

The salon offers wrap-around seating (storage underneath) with a hi/lo folding teak table to starboard, lower helm starboard forward, galley to port, a built-in seat and cabinetry port aft, Teak & Holly sole, blinds, screen on the door, fiberglass headliner with wood trim, Haier flat screen TV and sole hatches for complete access to the engine room.

36' CT Trawler Galley

The galley is located to port in the salon and was updated in 2006.

- Waeco 12vdc/120vac under-counter refrigerator/freezer
- Force 10 Marine 2-burner propane cooktop and oven with remote gas locker
- Corian countertop

- Franke stainless steel sink
- Storage drawers and cabinet
- Magma stainless steel grill on the trunk cabin

36' CT Trawler Dining

Dining space is available at the salon hi/lo folding teak table and the flybridge Todd hi/lo table.

36' CT Trawler Master Stateroom

The master stateroom offers a queen size berth (storage underneath), door to the aftdeck with a screen, 4 windows, a seat and storage cabinet port aft, ensuite head, with tub and shower, port forward, blinds, shelves, hanging locker, reading light and Teak & Holly sole.

36' CT Trawler Guest Stateroom

The guest stateroom is forward and offers a v-berth with insert and overall mattress, fan, 3 windows, overhead hatch, Teak & Holly sole, reading lights, blinds, hanging locker and storage drawers.

36' CT Trawler Flybridge

The flybridge offers a full helm forward with storage underneath, bench helmseat, bimini, Eisenglass enclosure forward, sunscreens for each side, non-skid deck, benchseat facing aft, Todd hi/lo table, Magma stainless steel grill, stainless steel mast and boom with roller furler steadying sail and a full flybridge cover.

36' CT Trawler Audio/Visual Equipment

- Haier flat screen TV in the salon
- Sony CDX-M501P AM/FM/CD/MP3 player in the salon
- Sony /RM-X55M stereo controller on the flybridge
- Poly Planer interior speakers
- Sony exterior speakers

36' CT Trawler Electronics

- Danforth Constellation magnetic compass at the lower helm
- Ritchie Powerdamp magnetic compass on the flybridge
- Cetrek Pilot 715 autopilot at the lower helm and on the flybridge
- Icom IC-M59 VHF at the lower helm
- B&G Network VHF on the flybridge
- Furuno 24nm Radar at the lower helm and on the flybridge
- Furuno LS-6000 depth sounder at the lower helm
- Standard Horizon depth sounder on the flybridge
- Garmin 545s GPSMap at the lower helm and with connections on the flybridge

36' CT Trawler Electrical System

- Freedom Marine 2000 watt inverter/charger (Rebuilt in 2013)
- Balmar 100 amp alternator with Heart voltage regulator
- Heart Interface Link 2000-R inverter/charger panel
- 2 X 30 amp shore cords

36' CT Trawler Engine/Mechanical Equipment

- Volvo-Penta TAMD41A 150 hp main engine with 1,806 hours
- Morse engine controls
- Dual Racor 900FG fuel filters with vacuum gauge and remote vacuum gauge in the salon
- Racor 900FG fuel polishing and transferring system
- Oil change system
- Wagner steering system
- Vetus bow and stern thrusters with controls at both helms
- Marine Air Systems 16,000 BTU and 7,000 BTU reverse cycle air conditioning/heating units

with digital controls

- Jabsco 4.5gpm on demand fresh water pump
- Seaward 11 gallon stainless steel water heater (2011)
- Jabsco fresh water heads
- Jabsco mascerator pump

36' CT Trawler Deck Equipment

- Simpson-Lawrence Spirit 1000 anchor windlass with foot controls and controls at both helms
- Gulfstar stainless steel 44lb anchor and all chain rode
- Stainless steel deck hardware
- Stainless steel hand rails forward and teak rails aft with stainless steel stanchions
- Teak decks on the main deck and non-skid deck on the flybridge (re-caulked in 2013)
- Windscreen, window and door Sunbrella covers
- Stainless steel mast and boom with Harken roller furling steadying sail
- Ocean Marine Systems stainless steel davits
- Aluminum frame sliding windows and screens
- Teak swimplatform and stainless steel swim ladder

36' CT Trawler Safety & Fire Protection

- Jim-Buoy life ring
- Rule bilge pumps
- Bilge pump counter
- Henderson manual bilge pump
- Fire extinguishers
- Trident galley gas control panel with remote tank storage

36' CT Trawler Exclusions

- Tools
- Dishware
- Sellers' personal belongings

36' CT Trawler Disclaimer

The Company offers the details of this vessel in good faith but cannot guarantee or warrant the accuracy of this information nor warrant the condition of the vessel. A buyer should instruct his agents, or his surveyors, to investigate such details as the buyer desires validated. This vessel is offered subject to prior sale, price change, or withdrawal without notice.

Исключения

При продаже яхты исключаются личные вещи владельца.

Отказ от ответственности

Компания предоставляет описание судна или яхты добросовестно, но не может гарантировать точность этой информации, а также не ручается за техническое состояние. Покупатель должен проинструктировать своих агентов или оценщиков исследовать представленную информацию более подробно, по собственному желанию. Продажа судна или яхты, изменение цены или снятие с продажи будет происходить без предварительного уведомления.

ФОТОГРАФИИ

36' CT Trawler port profile



36' CT Trawler port forward profile



36' CT Trawler port aft profile



36' CT Trawler overhead



36' CT Trawler starboard forward profile



36' CT Trawler anchor windlass



36' CT Trawler foredeck



36' CT Trawler foredeck aft



36' CT Trawler port side deck photo1



36' CT Trawler port side deck photo2



36' CT Trawler starboard side deck photo1



36' CT Trawler starboard side deck photo2



36' CT Trawler flybridge forward



36' CT Trawler flybridge covered



36' CT Trawler flybridge aft



36' CT Trawler flybridge helm



36' CT Trawler trunk cabin forward



36' CT Trawler trunk cabin aft



36' CT Trawler cockpit port



36' CT Trawler cockpit starboard



36' CT Trawler cockpit-master stateroom hatch



36' CT Trawler salon forward



36' CT Trawler salon aft



36' CT Trawler salon seating



36' CT Trawler salon port aft



36' CT Trawler galley photo1



36' CT Trawler galley photo2



36' CT Trawler lower helm



36' CT Trawler master stateroom port



36' CT Trawler master stateroom



36' CT Trawler master stateroom starboard



36' CT Trawler master stateroom forward



36' CT Trawler master stateroom head

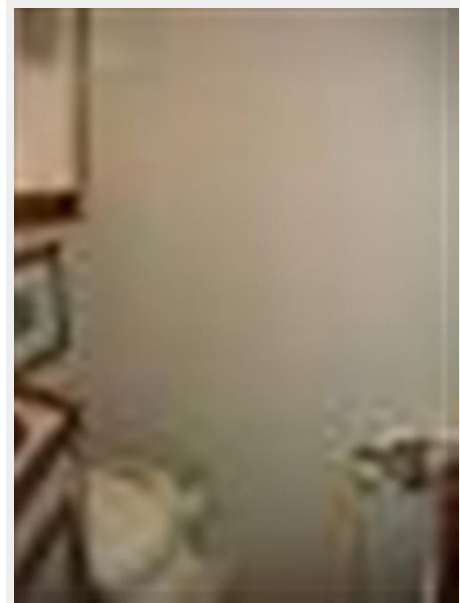


36' CT Trawler master stateroom shower



36' CT Trawler guest stateroom head

36' CT Trawler guest stateroom



36' CT Trawler engine room



36' CT Trawler engine room port aft



36' CT Trawler engine room starboard aft



36' CT Trawler main engine photo1



36' CT Trawler main engine photo2



36' CT Trawler Racor fuel filters



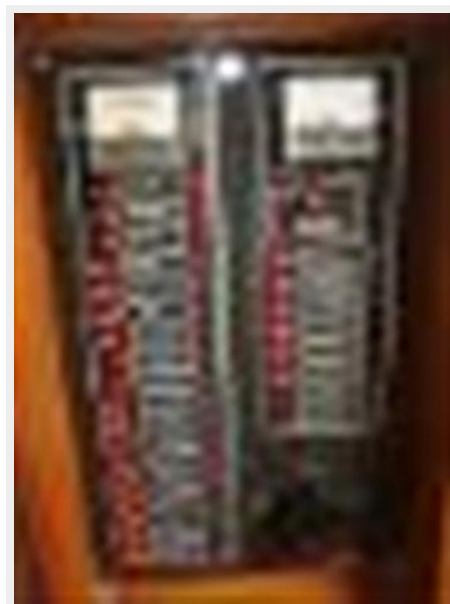
36' CT Trawler fuel polishing system



36' CT Trawler new fuel tank



36' CT Trawler electrical panel



36' CT Trawler water heater



36' CT Trawler inverter



36' CT Trawler layout



36' CT Trawler hauled out photo1



36' CT Trawler hauled out photo2



КОНТАКТЫ

Андрей Шестаков (Andrey Shestakov) – ведущий яхтенный брокер отдела продаж яхт и судов компании Shestakov Yacht Sales Inc. Официальный представитель Shestakov Yacht Sales Inc. для русскоговорящих клиентов в центральном офисе компании в Майами/Форт Лодердейл/Флорида/США.

Контактная информация

Email: andrey@shestakovyachtsales.com

Web: shestakovyachtsales.com

Телефоны

Краснодарский край: **+7(918)465-66-44**

США, Майами, Флорида: **+1(954)274-4435**

Время работы

Понедельник – Суббота: **9:00 - 21:00**
EDT

Воскресенье: **Закрито**

Адрес



Harbour Towne Marina, 850 NE 3rd St,
STE 213, Dania, FL 33004