

## GABBY WRAY — CATALINA



**Судостроитель:** CATALINA

**Год постройки:** 1999

**Модель:** Крейсерская яхта

**Цена:** ЦЕНА ЯХТЫ ПО ЗАПРОСУ

**Местонахождение:** United States

**Длина общая:** 47' 0" (14.33m)

**Ширина:** 14' 0" (4.27m)

**Макс. осадка:** 7' 6" (2.29m)

Купить **Gabby Wray — CATALINA** а также выбрать подходящую вам яхту из нашего каталога яхт вам поможет опытный яхтенный брокер Андрей Шестаков. На сегодняшний день компания **Shestakov Yacht Sales Inc.** имеет большое количество яхт в собственном списке продаж, а также тесно сотрудничает со всеми крупными яхтенными производителями по всему миру.

Для того чтобы купить яхту **Gabby Wray — CATALINA** а также проконсультироваться по любому вопросу связанному с покупкой, продажей, чартером яхт позвоните по телефону **+7(918)465-66-44**.

# ОГЛАВЛЕНИЕ

---

ОГЛАВЛЕНИЕ	2
ХАРАКТЕРИСТИКИ	3
Обзор	3
Основная информация	3
Размеры	3
Скорость, вместимость и масса	3
Размещение	3
Корпус и палуба	4
Информация о двигателе	4
ПОДРОБНОЕ ОПИСАНИЕ	5
Dimensions	5
Accommodations	5
Electrical	6
Navigation	6
Sails & Rigging	7
Deck & Hull	7
Mechanical	8
Brokerage	9
Исключения	9
Отказ от ответственности	9
ФОТОГРАФИИ	10
КОНТАКТЫ	15
Контактная информация	15
Телефоны	15
Время работы	15
Адрес	15

# ХАРАКТЕРИСТИКИ

## Обзор

GABBY WRAY was the last Catalina 470 to be built at the Morgan/Catalina Long Beach, CA facility. The original owner customized this Catalina 470 by adding additional storage and cabinetry. She has been constantly upgraded and improved and her owners have maintained her well. Major upgrades such as generator, dinghy davits, and those custom cabinets improve the cruising ability of the yacht.

## Основная информация

**Тип судна:** Крейсерская яхта

**Подкатегория:** Sloop

**Модельный год:** 1999

**Год постройки:** 1999

**Страна:** United States

## Размеры

**Длина общая:** 47' 0" (14.33m)

**Длина по ватерлинии:** 42' 0" (12.80m)

**Ширина:** 14' 0" (4.27m)

**Макс. осадка:** 7' 6" (2.29m)

**Трапы:** 64' 0" (19.51m)

## Скорость, вместимость и масса

**Водоизмещение:** 27000 Pounds

**Вместимость воды:** 195 Gallons

**Вместимость сточного бака:** 66 Gallons

**Объем топливного бака:** 88 Gallons

## Размещение

**Всего кают:** 1

## Корпус и палуба

---

**Материал корпуса:** Fiberglass

**Отделка корпуса:** Plastic

## Информация о двигателе

---

**Двигатели:** 1

**Производитель:** Yanmar

**Модель:** 4JH2-TE

**Тип двигателя:** Inboard

**Тип топлива:** Diesel

---

# ПОДРОБНОЕ ОПИСАНИЕ

---

## Dimensions

---

Draft: 7'6" Fin Keel LOA: 47 ft 0 in Beam: 14 ft 0 in LWL: 42 ft 0 in Displacement: 27000 lbs Ballast: 9700 lbs Bridge Clearance: 64 ft 0 in Headroom: 7 ft 6 in Engine 1: Engine Brand: Yanmar Engine Model: 4JH2-TE Engine Type: Inboard Engine/Fuel Type: Diesel Engine Hours: 2015 Propeller: 3 blade propeller Drive Type: Direct Drive Engine(s) Total Power: 75 HP Fresh Water Tanks: Plastic (195 Gallons) Fuel Tanks: Aluminum (88 Gallons) Holding Tanks: Plastic (66 Gallons) **Outside Equipment/Extras** Electric windlass

## Accommodations

---

GABBY WRAY has great accommodations both inside and out. The large aft cockpit has a walk-through transom with twin helm stations. Forward of the helms is a centerline cockpit table. This area is protected by the cockpit dodger and Bimini. The side decks are wide to allow easy and safe use of the vessel while at rest or under way.

You enter GABBY WRAY from the cockpit and at the base of the companionway stairs is the large galley to port with double sinks, Pantry storage, good countertop space with storage above and below. The galley is well equipped as noted below. The navigation station and chart table are to starboard, where you also find the ship electrical service panels.

If you go down the aft companionway, you find the master head and shower and master stateroom. The head has a separate shower stall with bench seat, vacu-flush fresh water head, sink, and second private entry door into the master stateroom.

The master stateroom has a inter-spring queen with memory foam top centerline berth. Vanity with mirror, hanging cloths lockers, built in night stands, storage above and below, enclosed cabinetry and Vizio Flat screen TV and DVD player.

The salon in mid-ship with dinette table located to port. It is a large wrap around settee that has plenty of leg room for all and converts into a queen berth. A second flat screen Vizio TV/DVD player is located in the salon.

The guest stateroom forward has a private door, Pullman inter-spring double berth to port with hanging lockers across and custom cabinetry. The forward head is centerline with private door, manual fresh water head, sink, separate shower stall with bench seat, and washer and dryer combo laundry.

GABBY WRAY has beautiful teak interior with fresh upholstery. Abundant storage throughout, clean Bulgaria with mechanical equipment below and engine space on center-line with total

access under companionway stairs.

## GALLEY:

Double sinks.

12V Refrigeration top and side loading w/digital temp display 2011

12V Freezer, top loading w/digital temp display 2011

Magic Chef Microwave oven

Princess three burner stove/oven (gimballed)

Large pantry storage bin

GFI marine galley/head 110V and plumbed to engine manifold - 20 gallons

Dockside water hookup

Total water capacity is 195 gallons in 5 tanks w/ control manifold, big tank gauges

## Electrical

---

3 X 130 Watt Solar Panels with Morningstar TR-45 charger/controller.

Six 6 Volt wet cell batteries ( Interstate) 2012

One 12 Volt engine start battery 2012

One 30 amp shore power inlet with dockside cables

Heart Interface 2000

Hubble phone/TV Inlet

Fischer Panda 6 kW Marine Generator w/4000 hours in sound shield - recently serviced

Fischer Panda Generator mounted under Pullman Berth forward

## Navigation

---

### Electronics

- Simrad NSE 8 GPS Chart Plotter - 2012

- Simrad Broadband Radar-2012
- Raymarine ST6000+ Autopilot w/control heads at both helms
- Raymarine ST60 Speed/Depth/Wind on cockpit table.
- Standard Horizon GX2150 VHF - AIS Capable - 2012
- Raymarine ST60 Multi Display at Helms (Repeat to cabin)
- Ritchie Powerdamp Compass at each Helm
- Two Vizio Digital Flat Screen TV's, both with DVD Player - 2012

---

## Sails & Rigging

---

GABBY WRAY has Schaefer headsail roller furling system, and Has an in-mast furling system; combined they provide easy sail handling..... Deck stepped mast with double spreaders and a reported 64' clearance.

Furling mainsail original

155% genoa original

Two Harken #66 ST Primary winches

One Harken #44 ST Electric main winch

One Harken #44 ST Working winch

Ten Lewmar Sheet Stoppers

All lines lead aft to, the cockpit with organizers

Rigid Boom Vang

---

## Deck & Hull

---

GABBY WRAY has Bimini top and dodger with eisenglass windows new 2012.

'Maxwell 1200 Windlass with deck foot controls

60 Lb Bruce style anchor with 300' chain

Fortress anchor with 100' chain and 200' rope rode

Bow anchor locker with hatch and anchor divider bulkhead.

Six man valise life raft (needs certification)

Foredeck flood light

Transom H/C shower

Solar panels (not wired)

Dinghy davits

Cockpit corner transom seats

Cockpit cushions

Self bailing decks

Twin helms provide superb handling and easy to walk through transom

Six cockpit storage lockers

Molded swim platform with boarding ladder

Cockpit island table with folding leaves, wind instrument panel, electronics, and engine instrumentation panel.

Emergency tiller hook up

---

## Mechanical

---

GABBY WRAY has a 75 HP Yanmar 4 cyl inboard Diesel engine with 1973 hours with a ZF Marine transmission.

Dripless shaft seal

Three blade bronze propeller

Twin Edson helm wheels with throttle control on stbd. side

Three automatic bilge pumps

Two Racor 500 series fuel filters with cross over valves

Bypass oil filter (1 Micron)

Two MSD Poly Waste tanks with 12 Volt macerator and topside pump out, tank monitor

Sea Recovery Watermaker with Cat/pump (30-40 GPH)



## Brokerage

---

Disclaimer: The Company offers the details of this vessel in good faith but cannot guarantee or warrant the accuracy of this information nor warrant the condition of the vessel. A buyer should instruct his agents, or his surveyors, to investigate such details as the buyer desires validated. This vessel is offered subject to prior sale, price change, or withdrawal without notice.

## Исключения

---

При продаже яхты исключаются личные вещи владельца.

## Отказ от ответственности

---

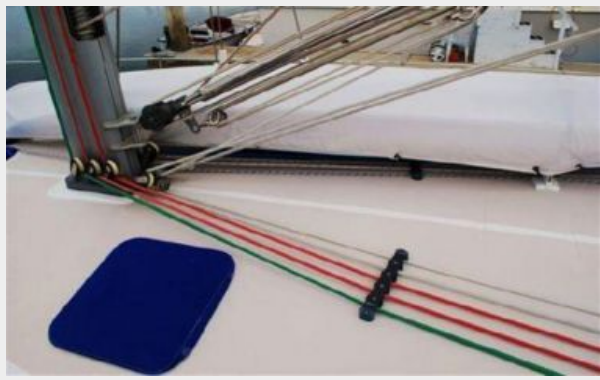
Компания предоставляет описание судна или яхты добросовестно, но не может гарантировать точность этой информации, а также не ручается за техническое состояние. Покупатель должен проинструктировать своих агентов или оценщиков исследовать представленную информацию более подробно, по собственному желанию. Продажа судна или яхты, изменение цены или снятие с продажи будет происходить без предварительного уведомления.

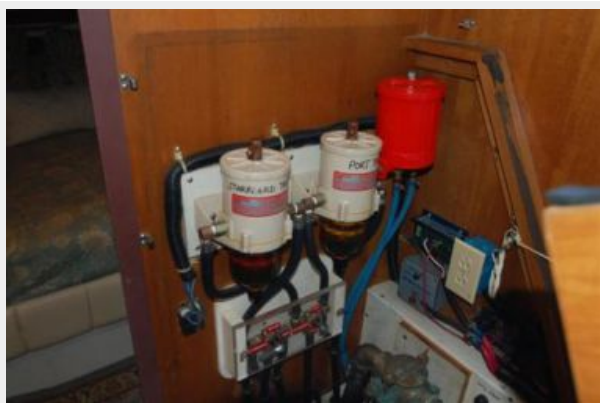
# ФОТОГРАФИИ













# КОНТАКТЫ

---

Андрей Шестаков (Andrey Shestakov) – ведущий яхтенный брокер отдела продаж яхт и судов компании Shestakov Yacht Sales Inc. Официальный представитель Shestakov Yacht Sales Inc. для русскоговорящих клиентов в центральном офисе компании в Майами/Форт Лодердейл/Флорида/США.

## Контактная информация

---

Email: [andrey@shestakovyachtsales.com](mailto:andrey@shestakovyachtsales.com)

Web: [shestakovyachtsales.com](http://shestakovyachtsales.com)

## Телефоны

---

Краснодарский край: **+7(918)465-66-44**

США, Майами, Флорида: **+1(954)274-4435**

## Время работы

---

Понедельник – Суббота: **9:00 - 21:00**  
EDT

Воскресенье: **Закрито**

## Адрес

---



Harbour Towne Marina, 850 NE 3rd St,  
STE 213, Dania, FL 33004