

KINSHIP — SAGA



Builder: SAGA

LOA: 43' (13.11mm)

Year Built: 1998

Beam: 12

Model: Cruising/Racing Sailboat

Max Draft: 7' (2.13mm)

Price: PRICE ON APPLICATION

Location: United States

Our experienced yacht broker, Andrey Shestakov, will help you choose and buy a yacht that best suits your needs **Kinship — SAGA** from our catalogue. Presently, at Shestakov Yacht Sales Inc., we have a wide variety of yachts available on our sale's list. We also work in close contact with all the big yacht manufacturers from all over the world.

If you would like to buy a yacht **Kinship — SAGA** or would like help answering any questions concerning purchasing, selling or chartering a yacht, please call **+1(954)274-4435**

TABLE OF CONTENTS

| | |
|---|---|
| TABLE OF CONTENTS | 2 |
| SPECIFICATIONS | 4 |
| Overview | 4 |
| Basic Information | 4 |
| Dimensions | 4 |
| Speed, Capacities and Weight | 4 |
| Accommodations | 4 |
| Hull and Deck Information | 5 |
| Engine Information | 5 |
| PHOTOS | 6 |
| Last Voyage | 6 |
| Navigation station & chart table | 6 |
| Galley | 6 |
| Galley & Companionway | 6 |
| Saloon | 6 |
| Starboard Settee | 6 |
| Forward Cabin | 7 |
| Port Settee | 7 |
| Forward cabin, looking aft | 7 |
| Forward cabin lockers | 7 |
| Forward head & shower (Note) - Converted to storage and work area | 7 |
| Aft Cabin | 7 |
| Aft head & shower | 8 |
| Aft head & shower | 8 |
| Foredeck | 8 |
| Foredeck | 8 |
| Mast, Boom, & Pole | 9 |
| Hard dodger and solar panels | 9 |

| | |
|-------------------------------------|-----------|
| Stern Gear | 9 |
| Great cockpit | 9 |
| Cockpit | 9 |
| Stbd. line stoppers & winch | 10 |
| Port line stoppers & electric winch | 10 |
| Saga 43 | 10 |
| Saga 43 | 10 |
| CONTACTS | 12 |
| Contact details | 12 |
| Telephones | 12 |
| Office hours | 12 |
| Address | 12 |

SPECIFICATIONS

Overview

- Kinship is a one owner maintained and extensively cruised Saga 43. Many custom features making her a good choice for your next offshore adventure.
- hard dodger, watermaker, wind pilot & dc A/P
- aggressively priced

Basic Information

Category: Cruising/Racing Sailboat

Model Year: 1998

Year Built: 1998

Country: United States

Dimensions

LOA: 43' (13.11mm)

LWL: 38' 9" (11.81mm)

Beam: 12

Max Draft: 7' (2.13mm)

Speed, Capacities and Weight

Water Capacity: 135 Gallons

Holding Tank: 40 Gal Gallons

Fuel Capacity: 94 Gal Gallons

Accommodations

Total Cabins: 2

Total Heads: 2

Hull and Deck Information

Hull Material: Fiberglass

Engine Information

Engines: 1

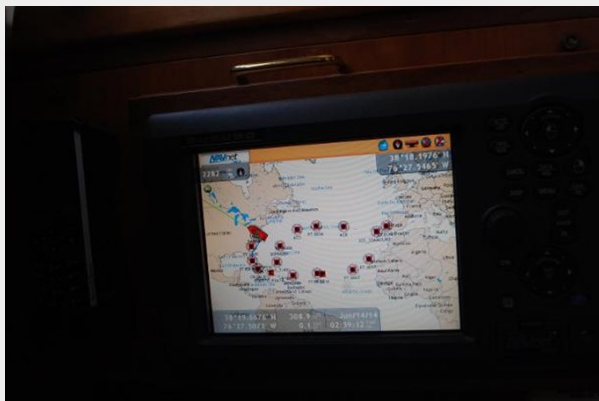
Manufacturer: Yanmar

Engine Type: Inboard

Fuel Type: Diesel

PHOTOS

Last Voyage



Navigation station & chart table



Galley



Galley & Companionway



Saloon



Starboard Settee



Port Settee



Forward Cabin



Forward cabin, looking aft



Forward cabin lockers



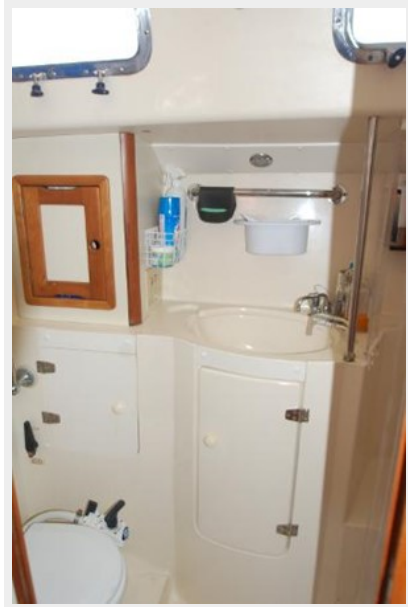
Forward head & shower (Note) - Converted to storage and work area



Aft Cabin



Aft head & shower



Aft head & shower



Foredeck



Foredeck



Mast, Boom, & Pole



Hard dodger and solar panels



Stern Gear



Great cockpit



Cockpit



Stbd. line stoppers & winch



Port line stoppers & electric winch



Saga 43



Saga 43





CONTACTS

Andrey Shestakov, leading yacht broker of the sales department of Shestakov Yacht Sales Inc. Shestakov Yacht Sales Inc., the official representative of the Miami/Fort Lauderdale FL headquarters.

Contact details

Email: andrey@shestakovyachtsales.com

Web: shestakovyachtsales.com/en/

Telephones

USA: +1(954)274-4435

Office hours

Monday – Saturday: **9:00 - 21:00** EDT

Sunday: **closed**

Address



Harbour Towne Marina, 850 NE 3rd St,
STE 213, Dania, FL 33004