

ARIANNA — DELTA



Судостроитель: DELTA

Год постройки: 2012

Модель: Моторная яхта

Цена: **ЦЕНА ЯХТЫ ПО ЗАПРОСУ**

Местонахождение: United States Virgin Islands

Длина общая: 164' 0" (49.99m)

Ширина: 33' 10" (10.31m)

Макс. осадка: 9' 6" (2.90m)

Крейс. скорость: 14 Kts. (16 MPH)

Макс. скорость: 17 Kts. (20 MPH)

Купить **ARIANNA — DELTA** а также выбрать подходящую вам яхту из нашего каталога яхт вам поможет опытный яхтенный брокер Андрей Шестаков. На сегодняшний день компания **Shestakov Yacht Sales Inc.** имеет большое количество яхт в собственном списке продаж, а также тесно сотрудничает со всеми крупными яхтенными производителями по всему миру.

Для того чтобы купить яхту **ARIANNA — DELTA** а также проконсультироваться по любому вопросу связанному с покупкой, продажей, чартером яхт позвоните по телефону **+7(918)465-66-44**.

ОГЛАВЛЕНИЕ

ОГЛАВЛЕНИЕ	2
ХАРАКТЕРИСТИКИ	5
Обзор	5
Основная информация	5
Размеры	5
Скорость, вместимость и масса	5
Размещение	6
Корпус и палуба	6
Информация о двигателе	6
ПОДРОБНОЕ ОПИСАНИЕ	7
VESSEL WALKTHROUGH	7
MACHINERY	8
COMMUNICATIONS AND NAVIGATION	8
AUDIO & VISUAL EQUIPMENT	9
SECURITY, FIRE FIGHTING & SAFETY	9
GALLEY & LAUNDRY	10
DECK EQUIPMENT	10
TENDERS & TOYS	10
EXTERIOR DECKS	11
MAIN SALON AND DINING	11
OFFICE/STUDY	11
GYM & SAUNA	11
WHEELHOUSE	11
MASTER SUITE	11
GUEST ACCOMMODATIONS	11
CREW ACCOMMODATIONS	12
REMARKS	12
EXCLUSIONS	12

Исключения	13
Отказ от ответственности	13
ФОТОГРАФИИ	14
Stern	14
Overhead	14
Sundeck	14
Sundeck	14
Sundeck	15
Sundeck	15
Bridgedeck	15
Maindeck Aft	15
Main Salon	15
Main Salon	15
Guest Stairwell	16
Dining	16
Owner Stateroom	16
Owner Bath	16
Owner Office	16
Owner Lounge	16
VIP King Guest	17
VIP Guest	17
Queen Guest Port	17
Queen Guest Starboard	17
Twin Guest Bridgedeck	17
Twin/Queen Guest Stateroom	17
Guest Bath	18
Galley	18
Sauna	18
Gym	18

Engine Room	19
Wheelhouse	19
General Arrangement	19
КОНТАКТЫ	20
Контактная информация	20
Телефоны	20
Время работы	20
Адрес	20

ХАРАКТЕРИСТИКИ

Обзор

With over 7,500 square feet of living space, ARIANNA has more interior volume than other yachts her length. ARIANNA is the most voluminous, all-composite, full displacement Superyacht at the 50-metre mark.

Основная информация

Тип судна: Моторная яхта

Подкатегория: Водоизмещение

Модельный год: 2012

Год постройки: 2012

Страна: United States Virgin Islands

Верх: Hardtop

Размеры

Длина общая: 164' 0" (49.99m)

Ширина: 33' 10" (10.31m)

Макс. осадка: 9' 6" (2.90m)

Скорость, вместимость и масса

Крейс. скорость: 14 Kts. (16 MPH)

Дальность на крейсерской скорости:
5000

Макс. скорость: 17 Kts. (20 MPH)

Чистый вес: 822 Pounds

Вместимость воды: 3000 Gallons

Объем топливного бака: 21900 Gallons

Размещение

Всего кают: 6

Всего коек: 8

Спальные места: 12

Всего ком. состава: 9

Каюта капитана: Да

Каюты экипажа: 6

Койки экипажа: 10

Спальных мест экипажа: 12

Корпус и палуба

Материал корпуса: Composite

Материал палубы: Teak

Комплектация корпуса: Full Displacement

Дизайнер корпуса: Delta Design Group

Дизайнер экстерьера: Delta Design Group

Дизайнер интерьера: Delta Design Group

Информация о двигателе

Двигатели: 2

Производитель: Caterpillar

Модель: 3512B

ПОДРОБНОЕ ОПИСАНИЕ

VESSEL WALKTHROUGH

Aft Deck The vast main aft deck is such a cozy spot that absolutely every guest onboard would love to spend some hours on its large curved sofa or the surrounding tables with chairs. This area is perfectly suitable for cocktail parties, family gatherings, friend reunions or even business discussions. **Sun Deck** Roomy external seating areas on the sundeck are perfect for al fresco dining or lounging in the sun. There is a large aft seating area on the main deck and the sun deck features a dayhead, hot-tub, sun chairs, a large island-style bar, a teak 12-person dining table, and HD TVs- all shaded by a carbon-fibre bimini top.

Main Salon A bamboo frame in the headliner of the main salon subconsciously defines the lounge areas where freestanding Fendi sofas are arranged around an enchanting teak root burl that forms a coffee table. With textured fabric liners, rattan, stripped wood sole, inlaid silk carpets, and joinery fashioned from exotic tropical hardwoods that include Koa, Wenge, and the glowing tiger stripe of Makassar ebony, the overall impression is very natural organic. **Dining Salon** The dining salon also features a Balinese inspired atmosphere with a beautifully crated, solid slab dining table with natural unfinished edges. The formal dining room boasts light Anigre, African mahogany, Khaya, and Makassar ebony that create a timeless yet contemporary ambiance for the dining experience. **Galley** The galley offers a full assortment of commercial-grade appliances and fixtures, and is logically arranged for food prep, cooking, plating, and service. Just forward of the galley is a comfortable crew mess and a large walk-in cooler capable of storing provisions for extended voyages. **Gym** ARIANNA's gym is located on the port side of the main deck and is fully equipped with generous space and breath-taking ocean views. With the option of free weights, fitness balls, cardio, and yoga, guests can enjoy the workout of their choice at anytime. To complete the full experience of an onboard fitness center is a spacious cedar-lined sauna, changing room, and dayhead. **Office** The office is designed around a stunning 17th Century German safe, sourced by the Owner. The custom-built desk, which incorporates several of the woods used on board, is situated so the Owner can enjoy the safe as a focal point as well as the spectacular views out the large hull-side windows. **Owner Deck** The master en-suite cabin is bridge deck aft, and features intricate rare wood details, silk carpets, organic fabrics, king size bed, bedroom sofa, hidden vanity desk, walk in his/hers closets, and a private entrance to the Master Aft Deck. The owner's suite provides wide sweeping views of the surrounding areas.

The owner's private lounge area joins the owner's suite with a twin stateroom that is suitable for children, family, or guests. The owner's lounge features a wet bar with verde granite bamboo counters, an elegant and comfortable seating area, a convenient work desk, and a concealed HD TV entertainment area. The Master Bathroom contains Mosaic tiled rain shower, spa bathtub, two separate toilettes, bidet, heated stone floors, his/her vanities.

Aft of the master bedroom is a private outdoor deck with dining area for intimate gatherings. This deck features chairs, a table for four, and a cozy rattan chaise lounge perfect for a quiet escape. Catering to various latitudes, the deck can be opened to enjoy the refreshing sea breeze or

closed with removable Isinglass. The calm open atmosphere of this breezy terrace evokes the charm of an island hideaway while staying true to ARRIANA's underlying concept of a home at sea. **Guest Accommodations** Additional ensuite guest accommodations are positioned on the lower deck and include a luxurious VIP king bed stateroom, two queens and one twin bed stateroom that converts to a queen. The exquisite blend of rare, dramatic and warm tropical hardwoods alongside organic textiles, woven details, and embossed accents continue throughout each of these guest staterooms. White porcelain sinks, heated stone floors and intricately woven panels inspire elegance and comfort in each room.

MACHINERY

Main Engines: (2) CAT 3512C diesels @ 1,650 Hp each Gearboxes: (2) ZF 4661 Generators: (2) 125 kW Northern Lights Shore Power: 125 KVA shore power converter Emergency: Emergency battery bank Air Conditioning: Aqua Air 60 ton Watermakers: (2) Sea Recovery 3,600 GPD Stabilizers: (2) Quantum QC-1800 Zero Speed Bow Thruster: Quantum QT 150 Steering System: Jastram Twin Ram Sewage System: Head Hunter Tidal Wave-200B Type II Fresh Water System: (2) Grundfos centrifugal style pumps; (1) Headhunter Mach 5 Bilge Water Filtration: Pacific Marine & Industrial Model 2.2T/107-B oily water separator Air: (2) Atlas Copco air compressors

COMMUNICATIONS AND NAVIGATION

SATcom: JRC JUE – 85 Inmarsat C receiver; JRC NDZ 127CI Sat C data terminal with NKA 800 Dot Matrix printer

Telephone System: Panasonic KX – TD 12/32 Telephone/Intercom

SSB: Furuno FS 5000 400W SSB Radio

VHF: Furuno FM – 8000 VHF Radio; Furuno RB 700 Remote Stations

MF: Furuno DSC – 6A MF DSC Receiver

MOB: Alert Man Overboard Alarm System

Fax: Fleet 77 voice, fax and data communication

TV: Sea Tel Satellite TV System

Horn: Kahlenberg T3

Sat Phone: Thrane and Thrane

AIS: Furuno Universal AIS

Radar: (2) Furuno 2125 ARPA

Gyrocompass: (1) C-Piath

Magnetic Compass: (1) Anschutz

Auto Pilot: (1) C-Piath

Depth Sounder: (1) B&G Hydra Cruise vessel instrumentation system

Electronic Charts: Transas Navisailor

Systems Monitor: International Integrated Systems Monitors in Wheelhouse, Engineers study, and repeater in crew mess

GPS: (2) Northstar 952X

Weather FAX: Furuno Fax 207

Searchlights: (2) ACR RCL-600 mounted on mast

Rudder Indicator: (2) Anschutz Angle

Remote Engine Controls: (4) PMC Pneumatic controls

Wind/Speed Log: B&G Hydra 2 Wind, Depth, Speed (+ Remote Displays in Master, Capt cabin, Crew Mess)

Navtex: Furuno NX-500

AUDIO & VISUAL EQUIPMENT

The entertainment system is based on central distributed sources with minimal local room equipment and a custom iPad control system. The Audio and Video signals are distributed to all areas of the yacht in their native format without loss of signal quality, providing the best sound and video experience in the entertainment areas. The lighting control system has simple to use wall keypads and can also be controlled from the iPads in each area.

(3) Mac servers; (2) 12TB Thunderbolt Drives (18) Apple iPads; (13) Apple TV's SATcom, WiFi, and Internet Blu-Ray Direct TV satellite Crestron AV controller system; MTN internet; VOIP satellite

SECURITY, FIRE FIGHTING & SAFETY

CCTV System: Palladium -Elbex Video Surveillance system EXMD931; Nightsight Thermal Vision System

Cameras: (5)

Monitors: (3) Fire Control System: Ansul Halon Fire Protection system w/CO2 Actuators for Lazarette & Engine room

Fire Extinguishers: Various including CO2 & Dry chemical

Alarms: (3) Pull handle alarms (Wheelhouse, Fiddly door & Lazarette); Smoke, Temperature detectors Life Rafts: (2) 12-Person

Life Rings: (4)

EPIRBs: (4) 406 MHz – 1 in each life raft

Flares: Various

Medical Equipment: First Aid kits, Defibrillator, (3) Oxygen bottles

GALLEY & LAUNDRY

The galley has 3 access points: from the crew mess just forward, from the formal dining room, and from the main deck hallway. There is padded vinyl flooring, Corian countertops, and generous storage areas above and below the countertops. Cooking Equipment: (2) Garland Ovens; (2) Flat Tops Refrigerator/Freezer: (2) Hobart (287.1 cu.ft) Walk-In Freezer: Cospolich/Horeco (235 cu.ft) Dishwasher: Whirlpool Other: GE Microwave/Convection Oven; Icemaker; Trash Compactor Main Laundry Equipment: (3) Maytag washer/dryer combo

DECK EQUIPMENT

Anchor Windlass System: (2) Steen 23.50 w/Vertical Pull

Aft Warping Capstans: (2) Steen 59.48

Anchors: (2) Pool 430 kg

Anchor Chain: Port 630' ¾ " Stud link, Stbd 450 ¾" Stud link

Boat Crane and Davits: (2) Nautical Structure Davits; Port: 4,000 lb / Stbd: 3,000 lb

Passerelle: (1) Cramm 15' Reach

TENDERS & TOYS

Novurania Launch 650 diesel Hamilton Zodiac Pro 420 Tender Deployment: Craneless - drive-in garage. 8 min launch retrieve (2) Yamaha VX Cruisers Jet Skis (2) Cayago F7 SeaBobs (2)

C4 Waterman Paddleboards (6) full sets SCUBA gear (2) YP45 dive compressor Fishing Gear Waterskis Water trampoline (1) 3-person towing donut (1) 2-person towing donut (1) knee board (1) wakeboard

EXTERIOR DECKS

Teak: 2,414 sq. ft. Full island bar with icemaker and refrigerator 2.8m cascade mini-pool by Teuco TEC Infrared G-sport electric BBQ grill 12 person al fresco dining (2) 42" Plasma TV's Day head and shower

MAIN SALON AND DINING

Area: 960+ sq. ft. Dining salon has seating for 12 HD TV's facing salon and dining table 50" teak tree root round table surrounded by 3 Fendi sofas

OFFICE/STUDY

Area: 240+ sq. ft. 17th Century Doettling safe Skylights by Glassworks, Seattle

GYM & SAUNA

Area: 380+ sq. ft. Life Fitness Platinum Club Series Recumbent Lifecycle with 7" LCD Inspire console X3 Elliptical Cross Trainer with track console T3 Treadmill with track console 42 sq. ft. built-in cedar-lined sauna from Saunatec Adjoining shower/head

WHEELHOUSE

Observation Lounge seats 10 guests behind Captain's chairs Captain's cabin Ship Office and Communications Room

MASTER SUITE

King bed Bedroom sofa Master Deck includes removable Isinglass panels and A/C MiniBar in the lounge with icemaker and refrigerator Sofa and chair seating arrangements in lounge Spiral staircase with access to maindeck and sundeck HD TV with bedframe integration His/Her walk in closets Bathroom features heated tile, spa bath, and rain shower Darrell Hill oil paintings Fabienne Blanc watercolors Silk carpets

GUEST ACCOMMODATIONS

The five en-suite guest cabins are positioned on Arianna's lower deck. (1) VIP king bed (2) queen (1) twin that converts to a queen Elevator access to all 4 deck floors Stair access to all 4 deck floors

CREW ACCOMMODATIONS

There are 4 equal crew cabins; each cabin has 2 twin size beds, entertainment center with 13" Panasonic TV, VCR, CD, stereo, hanging locker, en-suite head, shower, sink with mirrored medicine cabinet and plenty of storage space.

The Captain's cabin is to port, aft of the Pilothouse with a private study including navigation and communication equipment. The full size Captain's cabin has centerline Queen size bed, end tables with 3 drawers, full-size cedar lined hanging locker with full-length mirror, desk, book shelf and ample storage space.

The full entertainment center includes of 20" Sony TV, 5-disc CD, double cassette, DSS receiver, and an Elbex color security monitor. En-suite, the Captain's cabin has a Jacuzzi tub with shower, sink, head, mirrored medicine cabinet, tiled floors and tiled walls. The crew mess can be accessed either from the port side wing door or from the galley. The carpeted stairwell leads down below decks to the custom crew mess table with wraparound seating. The bench seating has abundant storage space below. Two port holes allow for natural light to fill the room. The crew mess has a full entertainment system with 20" Sony TV, VCR, DSS Receiver, 3-disc CD, B&G Hydra 2-Speed, depth and navigation log, UniOp KDP OIA alarm system, and color security monitor. The crew galley is forward and has side-by-side refrigerator and freezer, Icemaker, Kenmore Elite dishwasher, single stainless steel sink, GE microwave, 15", KitchenAid trash compactor and vinyl flooring.

REMARKS

ARIANNA centers around the concept of being a floating retreat for its Owner. It exists as a casual escape with a tropical ambiance. The key design features are color and texture, with extra emphasis placed on combining beautiful wood species with interesting grain patterns. The layout is all about function, with special consideration to the Owner's private space. The end result is a bright and casual 'island' refuge. ARIANNA's conservative lines appear to studiously protect guest's privacy, with open exterior spaces primarily reserved for high up on the sun deck away from prying eyes. Accessed either by the glass enclosed spiral staircase on the aft starboard quarter, or by the yacht's "all decks" full service elevator, her guests find space to dine, relax, sunbath, and party.

EXCLUSIONS

All Owner and crew personal effects.

Исключения

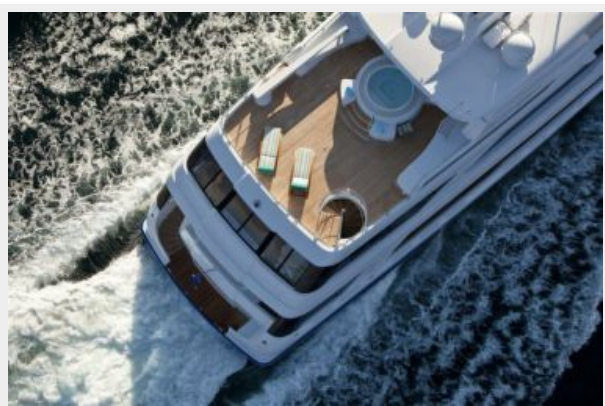
При продаже яхты исключаются личные вещи владельца.

Отказ от ответственности

Компания предоставляет описание судна или яхты добросовестно, но не может гарантировать точность этой информации, а также не ручается за техническое состояние. Покупатель должен проинструктировать своих агентов или оценщиков исследовать представленную информацию более подробно, по собственному желанию. Продажа судна или яхты, изменение цены или снятие с продажи будет происходить без предварительного уведомления.

ФОТОГРАФИИ

Overhead



Stern



Sundeck



Sundeck



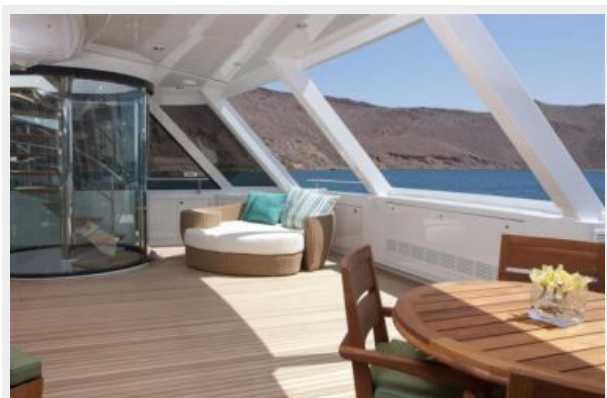
Sundeck



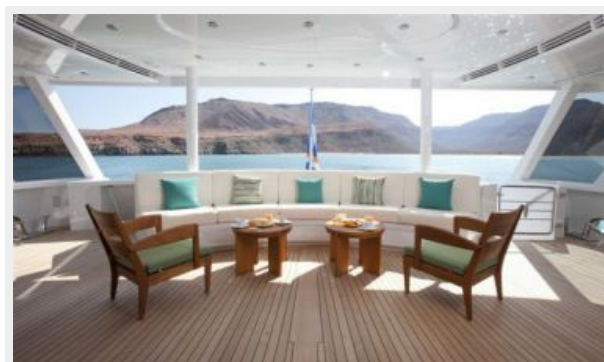
Sundeck



Bridgedeck



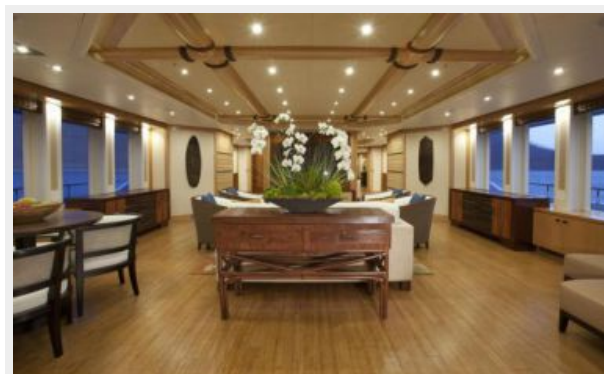
Maindeck Aft



Main Salon



Main Salon



Dining



Guest Stairwell



Owner Stateroom



Owner Bath



Owner Office



Owner Lounge



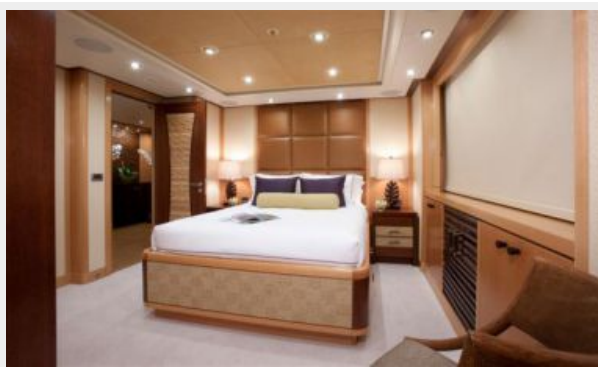
VIP King Guest



VIP Guest



Queen Guest Starboard



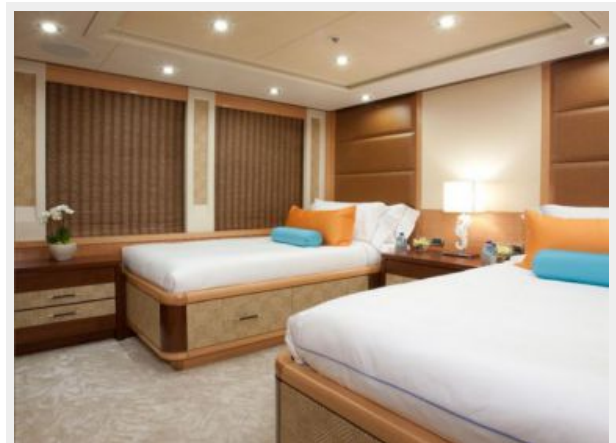
Queen Guest Port



Twin/Queen Guest Stateroom



Twin Guest Bridgedeck



Guest Bath



Galley



Sauna



Gym



Wheelhouse



Engine Room



General Arrangement



КОНТАКТЫ

Андрей Шестаков (Andrey Shestakov) – ведущий яхтенный брокер отдела продаж яхт и судов компании Shestakov Yacht Sales Inc. Официальный представитель Shestakov Yacht Sales Inc. для русскоговорящих клиентов в центральном офисе компании в Майами/Форт Лодердейл/Флорида/США.

Контактная информация

Email: andrey@shestakovyachtsales.com

Web: shestakovyachtsales.com

Телефоны

Краснодарский край: **+7(918)465-66-44**

США, Майами, Флорида: **+1(954)274-4435**

Время работы

Понедельник – Суббота: **9:00 - 21:00**
EDT

Воскресенье: **Закрито**

Адрес



Harbour Towne Marina, 850 NE 3rd St,
STE 213, Dania, FL 33004