

## MESHELL — GRADY WHITE



**Builder:** GRADY WHITE

**Year Built:** 1999

**Model:** Sport Fisherman

**Price:** PRICE ON APPLICATION

**Location:** United States

**LOA:** 30' 0" (9.14m)

**Beam:** 10' 7" (3.23m)

**Min Draft:** 1' 7" (0.48m)

**Cruise Speed:** 25 Kts. (29 MPH)

**Max Speed:** 35 Kts. (40 MPH)

Our experienced yacht broker, Andrey Shestakov, will help you choose and buy a yacht that best suits your needs **MESHELL — GRADY WHITE** from our catalogue. Presently, at Shestakov Yacht Sales Inc., we have a wide variety of yachts available on our sale's list. We also work in close contact with all the big yacht manufacturers from all over the world.

If you would like to buy a yacht **MESHELL — GRADY WHITE** or would like help answering any questions concerning purchasing, selling or chartering a yacht, please call **+1(954)274-4435**

---

# TABLE OF CONTENTS

---

TABLE OF CONTENTS	2
SPECIFICATIONS	3
Overview	3
Basic Information	3
Dimensions	3
Speed, Capacities and Weight	4
Accommodations	4
Hull and Deck Information	4
Engine Information	4
DETAILED INFORMATION	5
SPECS & EQUIPMENT	5
Exclusions	6
Disclaimer	6
PHOTOS	7
CONTACTS	12
Contact details	12
Telephones	12
Office hours	12
Address	12

---

# SPECIFICATIONS

---

## Overview

---

**REMARKS: PRICE REDUCED 9/2/2014**

The 300 Marlin began it's production run back in 1989 as the 280 Marlin, a Big,Brawny Walkaround Sportfisherman with a wide beam and an integrated swim platform/Outboard bracket. A NEW DEEP VEE design was introduced in model year 1995 and an aft bench seat was added and she was renamed the 300 Marlin. The 300 Marlin has always been a popular model thanks to her unmatched fishability, comfortable cabin accommodations and her top quality engineering,construction and overall fit and finish of the Grady White Product line.The cockpit is deep and uncluttered with excellent non skid and visibility from the raised bridge deck is excellent in all directions. There are berths for 3-4 in the upscale cabin (including a quarter berth aft) along with an enclosed head, full galley and removable dinette table. Additionalo features include a 30 gallon livewell, forward fishbox and rigging station, wide side decks, positive foam flotation and a bow pulpit. a popular boat with STRONG resale value, Twin 250 HP Outboards cruise the Marlin at 25 knots and deliver a top speed in excess of 35 knots.

## Basic Information

---

**Category:** Sport Fisherman

**Sub Category:** Open

**Model Year:** 1999

**Year Built:** 1999

**Country:** United States

**Vessel Top:** 2363

## Dimensions

---

**LOA:** 30' 0" (9.14m)

**Beam:** 10' 7" (3.23m)

**Min Draft:** 1' 7" (0.48m)

---

## Speed, Capacities and Weight

---

**Cruise Speed:** 25 Kts. (29 MPH)

**Max Speed:** 35 Kts. (40 MPH)

**Displacement:** 8221 Pounds

**Water Capacity:** 35 Gallons

**Fuel Capacity:** 306 Gallons

---

## Accommodations

---

**Total Cabins:** 1

---

## Hull and Deck Information

---

**Hull Material:** Fiberglass

**Deck Material:** Fiberglass

**Hull Color:** White

**Hull Finish:** Plastic

---

## Engine Information

---

**Manufacturer:** Yamaha

**Model:** OS66 2 Stroke

**Engine Type:** Outboard

**Fuel Type:** Gas

---

# DETAILED INFORMATION

---

## SPECS & EQUIPMENT

---

### Accommodations and Galley

- **Sleeps 3-4 in Vee Berths and Mid Cabin berth under helm deck**
- **Enclosed Head with Vanity and Electric head with Mincerator, Holding Tank.Deck Pumpout**
- **Refrigerator**
- **Sink**
- **Microwave Oven**

### Electronics and Navigation Equipment

- **Brand new Garmin 7212 GPS/Radar/Plotter**
- **Four foot Open Array Antenna**
- **Garmin GHC10 Auto Pilot**
- **Jabsco Remote Searchlight**
- **Standard VHF with remote station**
- **Sony Stereo CD System**
- **Tank Monitor System Water/Waste**
- **Deck,Cockpit and Fishing Equipment**
  - **Rupp 24' Outriggers**
  - **Down rigger 12 volt connection**
  - **Hardtop with Full Helm Enclosure**
  - **Tackle Locker**
  - **Fish Box to Port**
  - **New Rear Aft Cushions**
  - **New Helm Cushion**
  - **Cockpit Shower/Washdown**
  - **12 Rod Holders ( 6 in rocket launcher across aft Hardtop )**
  - **Gunnel Rod Storage Racks**
  - **Armstrong Swim Ladder with Bracket**
  - **Cockpit Courtesy Light**
  - **Cockpit Spreader Lights**

### Electrical Equipment/Systems

- **5 KW Kohler Generator with 9 hours use ( 1 Year Old )**
- **110 Volt Shorepower (AC)**
- **12 Volt Ship Power (DC)**
- **Dual 30 Amp Shore Service and Cables**

#### Other Machinery/Systems

- **Air Conditioning**
- **Electric Head with Mاسcerator**

#### Disclaimer

**The Company offers the details of this vessel in good faith but cannot guarantee or warrant the accuracy of this information nor warrant the condition of the vessel. A buyer should instruct his agents, or his surveyors, to investigate such details as the buyer desires validated. This vessel is offered subject to prior sale, price change, or withdrawal without notice.**

## Exclusions

---

Owner's personal belongings.

## Disclaimer

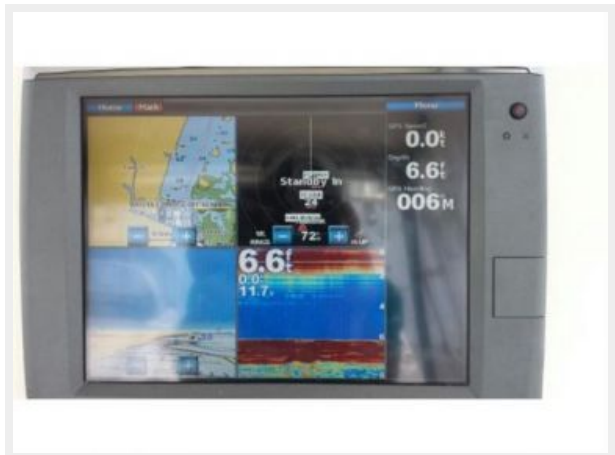
---

The Company offers the details of this vessel or yacht in good faith but cannot guarantee or warrant the accuracy of this information nor warrant the condition of the vessel. A buyer should instruct his representatives, agents, or his surveyors, to investigate such details as the buyer desires validated. This vessel or yacht is offered subject to prior sale, price change, or withdrawal without notice.

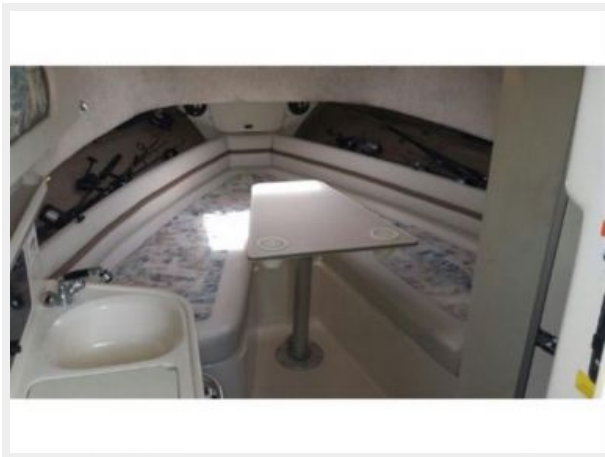
# PHOTOS















---

# CONTACTS

---

Andrey Shestakov, leading yacht broker of the sales department of Shestakov Yacht Sales Inc. Shestakov Yacht Sales Inc., the official representative of the Miami/Fort Lauderdale FL headquarters.

---

## Contact details

---

Email: [andrey@shestakovyachtsales.com](mailto:andrey@shestakovyachtsales.com)

Web: [shestakovyachtsales.com/en/](http://shestakovyachtsales.com/en/)

---

## Telephones

---

USA: +1(954)274-4435

---

## Office hours

---

Monday – Saturday: **9:00 - 21:00** EDT

Sunday: **closed**

---

## Address

---



Harbour Towne Marina, 850 NE 3rd St,  
STE 213, Dania, FL 33004