

CONQUISTADOR — CONTENDER



Builder: CONTENDER

Year Built: 2005

Model: Sport Fisherman

Price: PRICE ON APPLICATION

Location: United States

LOA: 36' 3" (11.05m)

Beam: 10' 0" (3.05m)

Max Draft: 24' 0" (7.32m)

Cruise Speed: 34.75904968 Kts. (40 MPH)

Max Speed: 52.13857452 Kts. (60 MPH)

Our experienced yacht broker, Andrey Shestakov, will help you choose and buy a yacht that best suits your needs **CONQUISTADOR — CONTENDER** from our catalogue. Presently, at Shestakov Yacht Sales Inc., we have a wide variety of yachts available on our sale's list. We also work in close contact with all the big yacht manufacturers from all over the world.

If you would like to buy a yacht **CONQUISTADOR — CONTENDER** or would like help answering any questions concerning purchasing, selling or chartering a yacht, please call **+1(954)274-4435**

TABLE OF CONTENTS

TABLE OF CONTENTS	2
SPECIFICATIONS	3
Overview	3
Basic Information	3
Dimensions	4
Speed, Capacities and Weight	4
Accommodations	4
Hull and Deck Information	4
Engine Information	4
DETAILED INFORMATION	5
Hull & Deck	5
Helm	5
Mechanical	5
Hardware	5
Cockpit Sole/Deck Compartments	6
Additional Included	6
Exclusions	6
Disclaimer	6
PHOTOS	7
CONTACTS	11
Contact details	11
Telephones	11
Office hours	11
Address	11

SPECIFICATIONS

Overview

The Contender 36' Fish Around merges the comforts of an express boat, while still keeping all the benefits of an open-deck center console. Whether you are out for a family cruise day, or tournament fishing 100+ miles out, this Contender will keep you and your guests safe and in total comfort. The current owner has maintained this boat with an open-checkbook, making her a great deal for the next owner.

Recent updates done this year –

- Re-placed the original triple Mercury Verado 275's with BRAND NEW triple Mercury Verado 300's with HD lower units and fly-by-wire controls with warranty until 2020!
- Installed dual Garmin 7012 touch-screen multi-function displays
- Installed Garmin xHD 4' open array radar
- Installed Airmar dual B164 1 kW transducers
- Installed Garmin CHIRP sonar
- Installed Garmin Autopilot

There is a custom ice water misting system installed to keep you cool while bringing up your fish in the cockpit. Not cool enough? Open up the cabin door, and the Cruisair air conditioning system will solve anybody's need to stay cool.

A Kohler 7.5 kW generator has been installed. It makes those long trips truly a pleasure, quietly powering all systems on the boat at any time.

This truly is just like purchasing a brand new boat, but at a substantially lower cost. The boat has been lift kept, and has no bottom paint. The Mercury extended warranty through 2020 is transferable to the new owner, as well as the Garmin warranties. This boat is ready to go, with just about every single option imaginable.

Basic Information

Category: Sport Fisherman

Sub Category: Center Console

Model Year: 2005

Year Built: 2005

Country: United States

Dimensions

LOA: 36' 3" (11.05m)

Beam: 10' 0" (3.05m)

Max Draft: 24' 0" (7.32m)

Speed, Capacities and Weight

Cruise Speed: 34.75904968 Kts. (40 MPH) **Max Speed:** 52.13857452 Kts. (60 MPH)

Displacement: 14500 Pounds

Fuel Capacity: 420 Gallons

Accommodations

Total Cabins: 1

Hull and Deck Information

Hull Material: Fiberglass

Engine Information

Engines: 3

Manufacturer: Mercury

Model: Verado 300

Fuel Type: Gas

DETAILED INFORMATION

Hull & Deck

- Hand-laid Fiberglass Throughout
- High Tech Construction Using Multi-Directional Fabric
- Foam Cored Glass Stringer System
- Foam Floatation
- Integral Dive Platform, Full Transom and Transom Door
- Self-Balling Cockpit
- Non-Skid Cockpit Sole and Deck
- Heavy Duty Rubrail
- Choice of Hull and Deck Gel Coat Colors
- Custom Painted Boot and Pin Stripe

Helm

- Custom Lexan Windshield
- Tilt-Away Console
- Large Electronics Mounting Surface
- Back-to-Back Helm Seat w/ Cooler & Storage

Mechanical

- International Lighting
- Recessed Pop-up Bow Light
- Dual Hydraulic Steering w/ Custom Steering Wheel
- K-Planes Trim Tabs
- Waterproof Switches and Breaker Panel w/ Indicator Lights
- 2000 GPH Auto/Manual Bilge Pump
- High Speed Compass
- Generator hours - 245

Hardware

- Stainless Steel Hardware
- Heavy Duty Bow Lifting Ring w/ Cleat (Pop-up)
- 2 – Heavy Duty Stern Lifting Rings
- 2 – 8” Stern Cleats
- 2 – 8” Cleats – Midship

- 4 – Lee's Flush Mount Gunnel Rod Holders
- Custom Aluminum Recessed Bow Handrail

Cockpit Sole/Deck Compartments

- Forward Anchor Locker w/Storage
- 1 – Bow Seat w/ Cushion
- 1 – 300 Gal. Above Deck Fishbox
- 1 – Bomar Skylight Cabin Hatch
- 1 – 60 Gal. Round Livewell, AFT Below Deck (Not Plumbed)

Additional Included

- Custom "Load Master" gooseneck trailer is available with the boat.

Exclusions

Owner's personal belongings.

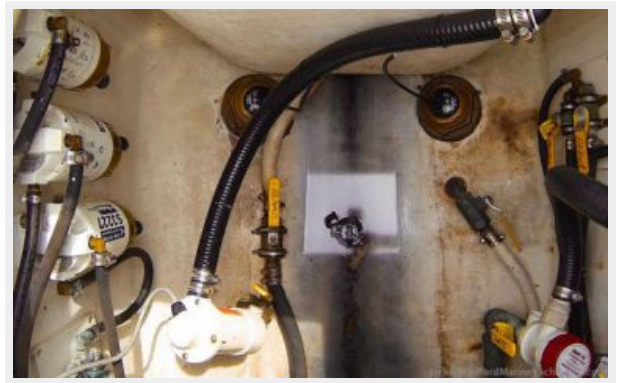
Disclaimer

The Company offers the details of this vessel or yacht in good faith but cannot guarantee or warrant the accuracy of this information nor warrant the condition of the vessel. A buyer should instruct his representatives, agents, or his surveyors, to investigate such details as the buyer desires validated. This vessel or yacht is offered subject to prior sale, price change, or withdrawal without notice.

PHOTOS









CONTACTS

Andrey Shestakov, leading yacht broker of the sales department of Shestakov Yacht Sales Inc. Shestakov Yacht Sales Inc., the official representative of the Miami/Fort Lauderdale FL headquarters.

Contact details

Email: andrey@shestakovyachtsales.com

Web: shestakovyachtsales.com/en/

Telephones

USA: +1(954)274-4435

Office hours

Monday – Saturday: **9:00 - 21:00** EDT

Sunday: **closed**

Address



Harbour Towne Marina, 850 NE 3rd St,
STE 213, Dania, FL 33004