

## SEA STRIKE — CABO



**Builder:** CABO

**Year Built:** 2013

**Model:** Sport Fisherman

**Price:** PRICE ON APPLICATION

**Location:** United States

**LOA:** 40' 0" (12.19m)

**Beam:** 15' 9" (4.80m)

**Min Draft:** 3' 6" (1.07m)

**Cruise Speed:** 29 Kts. (33 MPH)

**Max Speed:** 35 Kts. (40 MPH)

Our experienced yacht broker, Andrey Shestakov, will help you choose and buy a yacht that best suits your needs **SEA STRIKE — CABO** from our catalogue. Presently, at Shestakov Yacht Sales Inc., we have a wide variety of yachts available on our sale's list. We also work in close contact with all the big yacht manufacturers from all over the world.

If you would like to buy a yacht **SEA STRIKE — CABO** or would like help answering any questions concerning purchasing, selling or chartering a yacht, please call **+1(954)274-4435**

# TABLE OF CONTENTS

TABLE OF CONTENTS	2
SPECIFICATIONS	5
Basic Information	5
Dimensions	5
Speed, Capacities and Weight	5
Accommodations	5
Hull and Deck Information	5
Engine Information	5
DETAILED INFORMATION	6
VESSEL WALKTHROUGH	6
Remarks	7
Exclusions	7
Disclaimer	7
PHOTOS	8
Dockside	8
Dockside	8
Portside at dock	8
Starboard at dock	8
Stern	8
Hard top electronics and antenna	8
Cockpit	9
Fishbox chill plate	9
Mezzanine seating	9
Mezzanine freezer	9
Mezzanine freezer	9
Cockpit bait and prep and tackle	10
Fusion stereo	10
Fusion speakers	10

Helm	10
Helm electronics	10
Helm deck starboard with drink box	11
Helm port view	11
Helm seats (Admiral upgrades)	11
Helm deck seating with teak deck	11
Helm teak deck	11
Helm ice maker	11
Helm tackle drawers	12
Galley	12
Cabo famous wiring	12
Salon TV and breaker panel	12
Salon settee	12
Salon rod storage	12
Salon rod storage	13
Master berth	13
Master starboard with closet	13
Master rod storage starboard	13
Master rod storage port	13
Master TV	13
Head	14
Head	14
Zeus pod drive access	14
Engine Room	14
Generator	14
Engine port	14
Engine Starboard	15
CONTACTS	16
Contact details	16

---

Telephones	16
Office hours	16
Address	16

---

# SPECIFICATIONS

---

## Basic Information

---

**Category:** Sport Fisherman

**Model Year:** 2013

**Year Built:** 2013

**Country:** United States

## Dimensions

---

**LOA:** 40' 0" (12.19m)

**Beam:** 15' 9" (4.80m)

**Min Draft:** 3' 6" (1.07m)

## Speed, Capacities and Weight

---

**Cruise Speed:** 29 Kts. (33 MPH)

**Max Speed:** 35 Kts. (40 MPH)

**Water Capacity:** 95 Gallons

**Fuel Capacity:** 525 Gallons

## Accommodations

---

**Total Cabins:** 1

## Hull and Deck Information

---

**Hull Material:** Fiberglass

## Engine Information

---

**Engines:** 2

**Manufacturer:** Cummins

**Model:** QSC 8.3

**Engine Type:** Inboard

**Fuel Type:** Diesel

---

# DETAILED INFORMATION

---

## VESSEL WALKTHROUGH

---

### BRUNSWICK PASSPORT PREMIERE EXTENDED WARRANTY (TRANSFERABLE)

SEA STRIKE is a 2013 model 40 Cabo HTX that was custom built by her owner. Her upgrades are numerous. No expense was spared in her outfitting. Below please find a list of the optional, custom and highlight worthy features aboard "Sea Strike".

- 600 hp Cummins engines with Zeus pod drives (UPGRADE)
- Onan generator in lieu of Fisher Panda
- Joystick controls w/ Sky hook dynamic positioning system
- (2) GARMIN 7215 touch screen displays with GPS, FF and radar feature (CUSTOM INSTALL)
- SAT TV w 3<sup>rd</sup> helm monitor for viewing (CUSTOM INSTALL)
- Teak Helm Deck (CUSTOM INSTALL)
- STIDD highback admiral helm chairs (3) (CUSTOM UPGRADE)
- Swim Platform (FACTORY UPGRADE)
- Bait tank window (FACTORY UPGRADE)
- Cockpit Freezer (FACTORY UPGRADE)
- Ice maker under stbd helm seat (FACTORY UPGRADE)
- AC helm deck 24,000 BTU (FACTORY UPGRADE)
- Hot cold hand held FW shower in the cockpit (FACTORY UPGRADE)
- Underwater lights (FACTORY UPGRADE)
- Freezer plate in port fish box (FACTORY UPGRADE)
- Teak and Holly salon sole in lieu of carpet (FACTORY UPGRADE)
- Bose 3 2 1 surround sound in salon (FACTORY UPGRADE)
- Fusion stereo system w I pod compatibility and 4 speakers (CUSTOM UPGRADE)

---

## Remarks

---

THE 40 CABO IS WIDELY REGARDED AS THE BEST RUNNING 40 FOOT PRODUCTION BOAT EVER BUILT. The evolution of this model has incorporated the Zeus pod drives for speed, maneuverability, efficiency, and dynamic positioning. The latest innovation to be have been incorporated is the design of the HTX or hard top express. This factory designed 3 sided hard enclosure eliminates leaky isinglass, corroded zippers and costly bi annual replacement. It affords the vessel owner superior weather protection, exceptional visibility and exponentially improved climate controls. Last but certainly not least the 40 HTX model adds cockpit mezzanine seating for guests and anglers.

---

## Exclusions

---

Owner's personal belongings.

---

## Disclaimer

---

The Company offers the details of this vessel or yacht in good faith but cannot guarantee or warrant the accuracy of this information nor warrant the condition of the vessel. A buyer should instruct his representatives, agents, or his surveyors, to investigate such details as the buyer desires validated. This vessel or yacht is offered subject to prior sale, price change, or withdrawal without notice.

# PHOTOS

**Dockside**



**Dockside**



**Portside at dock**



**Starboard at dock**



**Stern**



**Hard top electronics and antenna**





**Cockpit**



**Fishbox chill plate**



**Mezzanine seating**



**Mezzanine freezer**



**Mezzanine freezer**



**Cockpit bait and prep and tackle**



**Fusion stereo**



**Fusion speakers**



**Helm**



**Helm electronics**



**Helm deck starboard with drink box**



**Helm port view**



**Helm seats (Admiral upgrades)**



**Helm deck seating with teak deck**



**Helm teak deck**



**Helm ice maker**





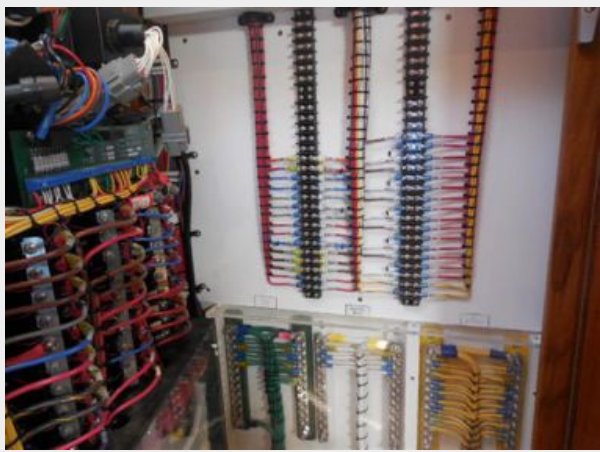
**Helm tackle drawers**



**Galley**



**Cabo famous wiring**



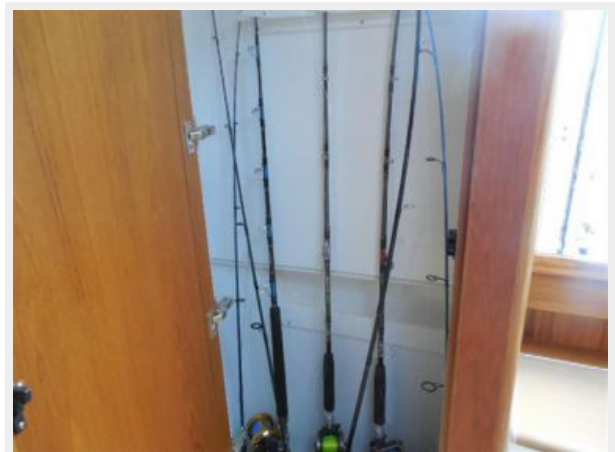
**Salon TV and breaker panel**



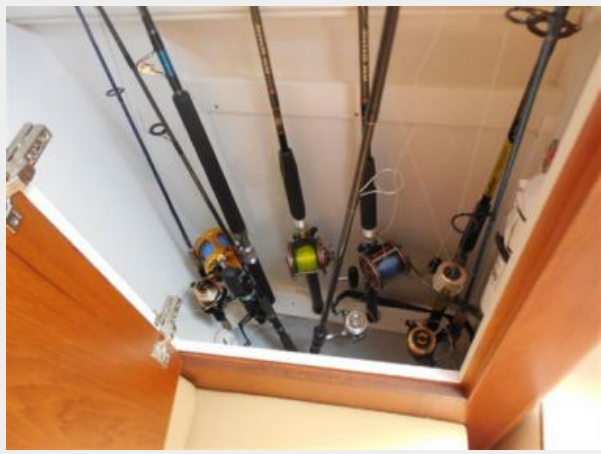
**Salon settee**



**Salon rod storage**



**Salon rod storage**



**Master berth**



**Master starboard with closet**



**Master rod storage starboard**



**Master rod storage port**



**Master TV**





**Head**



**Head**



**Zeus pod drive access**



**Engine Room**



**Generator**



**Engine port**



## Engine Starboard



# CONTACTS

---

Andrey Shestakov, leading yacht broker of the sales department of Shestakov Yacht Sales Inc. Shestakov Yacht Sales Inc., the official representative of the Miami/Fort Lauderdale FL headquarters.

## Contact details

---

Email: [andrey@shestakovyachtsales.com](mailto:andrey@shestakovyachtsales.com)

Web: [shestakovyachtsales.com/en/](http://shestakovyachtsales.com/en/)

## Telephones

---

USA: +1(954)274-4435

## Office hours

---

Monday – Saturday: **9:00 - 21:00** EDT

Sunday: **closed**

## Address

---



Harbour Towne Marina, 850 NE 3rd St,  
STE 213, Dania, FL 33004