

MISS MICHELLE — WESTPORT



Судостроитель: WESTPORT

Год постройки: 2009

Модель: Моторная яхта

Цена: ЦЕНА ЯХТЫ ПО ЗАПРОСУ

Местонахождение: United States

Длина общая: 130' 3" (39.70m)

Ширина: 26' 0" (7.92m)

Макс. осадка: 6' 6" (1.98m)

Крейс. скорость: 20 Kts. (23 MPH)

Макс. скорость: 24 Kts. (28 MPH)

Купить **MISS MICHELLE — WESTPORT** а также выбрать подходящую вам яхту из нашего каталога яхт вам поможет опытный яхтенный брокер Андрей Шестаков. На сегодняшний день компания **Shestakov Yacht Sales Inc.** имеет большое количество яхт в собственном списке продаж, а также тесно сотрудничает со всеми крупными яхтенными производителями по всему миру.

Для того чтобы купить яхту **MISS MICHELLE — WESTPORT** а также проконсультироваться по любому вопросу связанному с покупкой, продажей, чартером яхт позвоните по телефону **+7(918)465-66-44**.

ОГЛАВЛЕНИЕ

ОГЛАВЛЕНИЕ	2
ХАРАКТЕРИСТИКИ	4
Основная информация	4
Размеры	4
Скорость, вместимость и масса	4
Размещение	4
Корпус и палуба	5
Информация о двигателе	5
ПОДРОБНОЕ ОПИСАНИЕ	6
Overview	6
Aft Deck	7
Foredeck	7
Fly Bridge	8
Forward Observation Deck	8
Boat Deck	8
Swim Platform	8
Pilothouse	9
Main Salon	10
Dining	10
Main Deck Day Head	10
Master Stateroom	11
Master Head	11
VIP Guest Staterooms	11
Guest Staterooms	12
Audio/Video Locker	12
Upper Lounge	12
Galley and Stores	13
Communications	13

Steering	14
Cameras	15
Signals and Lights	15
Captain/Crew Quarters	15
Miscellaneous Equipment	16
Safety Equipment	17
Time on Machinery	17
General Construction	17
Systems	18
Mooring and Anchoring	23
Mechanical	23
Исключения	24
Отказ от ответственности	24
ФОТОГРАФИИ	25
КОНТАКТЫ	33
Контактная информация	33
Телефоны	33
Время работы	33
Адрес	33

ХАРАКТЕРИСТИКИ

Основная информация

Тип судна: Моторная яхта

Модельный год: 2009

Год постройки: 2009

Страна: United States

Номер регистрации в береговой
охране: 1014684

Размеры

Длина общая: 130' 3" (39.70m)

Длина по ватерлинии: 115' 0" (35.05m)

Ширина: 26' 0" (7.92m)

Макс. осадка: 6' 6" (1.98m)

Скорость, вместимость и масса

Крейс. скорость: 20 Kts. (23 MPH)

Макс. скорость: 24 Kts. (28 MPH)

Водоизмещение: 385000 Pounds

Вместимость воды: 1726 Gallons

Вместимость сточного бака: 1700
Gallons

Объем топливного бака: 9965 Gallons

Размещение

Всего кают: 5

Спальные места: 11

Всего ком. состава: 11

Каюта капитана: Да

Каюты экипажа: 4

Койки экипажа: 6

Комм. состав экипажа: 4

Корпус и палуба

Материал корпуса: Fiberglass

Комплектация корпуса: Semi-Displacement

Отделка корпуса: Stainless Steel

Дизайнер корпуса: William Garden

Дизайнер экстерьера: Westport/Taylor Olson

Дизайнер интерьера: Westport Design Team

Информация о двигателе

Двигатели: 2

Производитель: MTU

Модель: 12V4000

Тип двигателя: Inboard

Тип топлива: Diesel

ПОДРОБНОЕ ОПИСАНИЕ

Overview

MISS MICHELLE was built by a very knowledgeable yachtsman who put together a superb team to manage the build at Westport Shipyard. MISS MICHELLE is the 29th 130 built and the first to be introduced as the 40m with incredible upgrades to previous 130s, including ABS class and MCA. MISS MICHELLE had the care and budget to make her a superb build, and as a result, is the most customized 40m of the series.

MISS MICHELLE's Main Salon is warm and welcoming, located on the main deck and accessed through double doors on the aft deck. The salon offers a conversation area with four occasional chairs, coffee table and sofa along with an entertainment center containing a 50" popup Runco TV with surround sound, Kaleidescape/DVD/CD player and an iPod docking station. The dining area is forward of the salon and can seat up to ten guests with buffets to port and starboard. There is a day head forward of the dining area to starboard. MISS MICHELLE can accommodate up to 11 guests in 5 cabins. The Master Suite is forward of the main foyer with entry through the owner's study into the Master Cabin with king bed, bath with double sinks, large shower and toilet and bidet. There is a vanity to port, a walk-in closet forward and ample storage throughout. The entertainment center has a 42" HD plasma TV, Kaleidescape/DVD/CD player, and surround sound. The first VIP Stateroom is located aft on the lower deck to port with a centerline king-sized bed with two nightstands, dresser, closet, private head and shower, plus an entertainment center with 32" HD TV with Kaleidescape/DVD/CD player. The second VIP Stateroom located to starboard aft on the lower deck also has a centerline king-sized bed with two nightstands, dresser, closet, private head and shower, plus an entertainment center with 32" HD TV with Kaleidescape/DVD/CD player. After the yacht's refit in 2012, she now has two twin cabins. One of the twin cabins is located to starboard, and a twin cabin with a pullman bunk berth is to port. Both of these cabins have a dresser, closet and private head and shower plus an entertainment center with 26" HD TV with DVD/CD player. MISS MICHELLE's Sky Lounge is a favorite gathering area with spacious seating, a full bar with three stools, game table, relaxing sofa and a 50" HD TV with Kaleidescape/DVD/CD player and surround sound. There is a day head just forward of the sky lounge. On the upper deck aft MISS MICHELLE offers an additional covered dining outside seating area with BBQ and access to the sundeck. MISS MICHELLE's Sundeck has another seating area with two tables that make dining for eight with protection from weather or sun by the hardtop. The tables are removed and sit outboard to make up ample and comfortable seating and lounging area. There is a wet bar with a BBQ to port, a Jacuzzi with surround sun pads able to accommodate up to ten guests, a 52" TV that can be angled to be viewed forward or aft, and three sun chairs. MISS MICHELLE's Aft Deck makes for an excellent gathering space with 37" plasma TV situated above the full bar with three stools, also visible to the large al fresco dining table for up to ten which converts to two smaller high or low cocktail tables. There are also four larger seats with two ottomans, perfect for a quiet conversation, to read a book or enjoy a cocktail. This area gives easy access to the water, tender and water sports. Her walk-around teak decks lead to the bow, which has a large seating area with table,

and further forward on the bow one finds an additional seating area.

Aft Deck

- Teak decking
- (2) High-gloss teak dining tables (fixed pedestal with leaf insert)
- (4) Large bucket chairs
- (4) Small bucket chairs
- (4) Armless dining chairs
- (2) Foot stools with cushions
- (2) Side tables
- Forward facing settee
- Bar stools

Bar Area:

- Stone countertops
- Refrigerator
- Ice bin
- Sink
- Bottle storage
- Barware storage
- TV
- Lighting control for the aft deck
- Entertainment system controls
- Wing doors: Plexiglass with sea locks for open position
- Stainless rails

Foredeck

- Teak decking
- U-shaped settee
- Custom teak high/low pedestal table
- Flag staff
- Ships bell
- Deck lighting
- (2) Anchor windlasses
- Chain locker access and fender storage
- Fore deck seat: Storage below for windlass control pendants and chain wash-down controls

Fly Bridge

- Teak decking
- Loose furniture: (2) Gloss finish teak dining table; (6) Woven dining chairs with cushions; (3) Dedon small tables; (3) Dedon woven chaise lounges with cushions; (2) Dedon arm chairs with cushions
- Sun Pad surround for Jacuzzi
- Anchor light
- Deck lighting
- Air Horn: Kahlenberg Model F3 with light
- Hot Tub: Custom fabricated with multi-zone jets
- Hard top: Integrated with mast
- Life rafts (4): in cradles, with hydrostatic release

Forward Observation Deck

Description: View area forward of the Pilothouse and accessed by the Side Decks and the stairs from the Fore Deck area.

- Teak decking
- Built-in custom seating arrangement with table and chairs

Boat Deck

- Dedon deck furniture (loose): Woven full sofa with cushions; (2) Woven armchairs with cushions; Teak cocktail table; (2) Extra dining chairs; (12) dining chairs total on-board
- Teak deck
- Nautica 18' Wide Body Tender
- Jet Ski Chocks
- 3000 lb.davit

Swim Platform

- Teak Decking
- (4) Pop up cleats
- Gasoline filling and service station
- Swim Ladder
- Steps to Main Deck with handrails, port and starboard
- (2) Capstans: port and starboard
- Access door to Utility Room
- (6) Underwater lights

- Stainless Rails
- Handheld shower with temperature control

Pilothouse

The Pilothouse bridge contains the most current and convenient equipment available today . The expansive settee is raised to provide excellent sight lines of the panoramic view.

- Bridge console- Leather-covered dash panels, Pommele Sapele panels with solid Mahogany edge
- Traditional wooden helm wheel: Pommele Sapele with Mahogany trim
- Chart table: To port side of main helm
- Settee: Covered in leather, side panels trimmed in Pommele Sapele
- Settee Table: Pommele Sapele panel with solid Mahogany edge
- Helm Chair: (2) STIDD, 500XL Helm chairs with leather to match the settee
- Loose Furniture & Equipment
- Wall treatments
- Mahogany and fabric panels
- Lighting - Halogen down-lights
- Built-in desk
- Floor covering and wall treatments
- Desk chair

Navigation Electronics The vessel is equipped with modern navigation and communications equipment suitable for worldwide voyages. This equipment includes satellite based position and speed information, gyroscopic and magnetic heading data, radar, electronic charting and depth finding. Communications equipment spans numerous transmission technologies in compliance with safety regulations and to maximize contact with shore side and marine stations, enhancing one's ability to communicate from any location. Equipment installed allows chartering under CISR flag. (GMDSS compatibility) **Pilothouse Navigational Aids**

- Bridge Switching Systems (BSS): (5) 26" widescreen Nauticomp displays
- Chart plotter: NAV 1-Transas Navisailor 3000 ECS with display in Pilothouse and Wireless Keyboard & Mouse. System includes interfaces from: ARPA, GPS, AIS, Depth, Speed and Wind. Input from GPS and output to Autopilot is provided.
- NAV 2- MaxSea Display on BSS and wireless Keyboard/Mouse. Output to Autopilot is provided.
- NAV 3 - Nobeltec Pro
- GPS: (2) Furuno Commercial grade WAAS/GPS units in pilothouse.
- AIS: Furuno FA-150 interfaced to Radar and Electronic Chart with Pilot Plug.
- Radar: (2) Furuno FAR-2117 X-Band Radars. (1) with 8.0 ft. Open Array and (1) with 6.5 ft. Open Array; 96 N.M. range. Radars are heading stabilized with speed input for ARPA input to both radars.
- Wing Stations: port and starboard

- Molded composite covers
- Electronic engine controls
- Main engines start and stop
- Jog steering
- Rudder angle indicator
- Bow thruster
- Horn controls

Main Salon

This is an elegantly comfortable area to enjoy the 50" wide screen Plasma TV that rises out of the starboard aft corner cabinet. Aft entry door is stainless steel framed, glass, counter-pull, open/close sliding mechanism with pneumatic seal.

- Sofa centerline
- (4) Occasional chairs
- (2) End tables
- Custom coffee table
- Player Piano
- 50" Runco TV
- Entertainment Center

Dining

Forward from the main salon is the formal dining area. Servers have easy access from the galley via a dual hinged access door.

- Formal Dining Table: Pommele Sapele table with Mahogany accents accommodates ten guests
- (10) Formal dining chairs
- Buffet/Storage: Buffets to port, starboard, and aft provide storage for twelve 5-piece place settings of china, formal flatware, and stemware, two wine chillers and A/V units

Main Deck Day Head

- Stone vanity top
- Custom sink
- Lightweight stone flooring
- Coordinated bath accessories
- Headhunter toilet

Master Stateroom

The stateroom features a king sized berth with leather wrapped rails and upholstered headboard, built in dressers, and an entertainment system and A/V equipment complimented by Crestron control, office area with desk, make up table, dressers and His & Hers cedar-lined walk-in closets.

- King sized berth with Beauty-Rest innerspring mattress
- Entertainment center with *AV* equipment storage
- Dressers
- Nightstands
- Make up table/desk and chair
- Master Office: Desk with chair
- Lighting: Halogen down lights
- Lighted make-up mirror
- (1) safe
- Wall treatment and flooring

His/hers Dressing Room

- Dressers and hanging rods each side
- Accent lighting

Master Head

- Vanity: stone countertop
- (2) Vitreous china sinks, fixtures, and accessories
- Flooring - Onyx
- Mirrors above vanities in his and her heads
- Headhunter Royal Flush toilet
- Kohler Bidet
- Shower with frameless tempered glass door and marble surround
- Accessories and fixtures
- Marble threshold

VIP Guest Staterooms

All VIP staterooms (port and starboard) provide built in dressers and nightstands, including wardrobes. The staterooms feature king sized berths with leather wrapped rails and upholstered headboards, and drawers in the base. Each Guest Stateroom has built in entertainment systems and A/V equipment complemented by Crestron control. VIP Heads

- Vanity - Pommele Sapele with Mahogany accents, lightweight stone countertop, one

vitreous china sink, fixtures & accessories

- Glass - Fixed, oval port light with removable stainless dead light cover
- Lightweight stone flooring
- Headhunter Royal Flush toilet
- Kohler bidet
- Shower with frameless tempered glass doors
- Thermostat
- Fixtures
- Accessories
- Marble threshold

Guest Staterooms

All Guest staterooms provide built in dressers and nightstands, including wardrobes. The staterooms feature sound insulation in the forward bulkheads and stair enclosure, (2) twin berths in the port, and (3) twin berths in the starboard, with leather wrapped rails and upholstered headboards. Each Guest Stateroom has built in entertainment systems and A/V equipment complemented by Crestron control. Port Guest Stateroom: Recently converted from queen berth to twin bunks, wardrobe, nightstand, and dresser/entertainment center. Starboard Guest Stateroom: Three twin bunk berths, wardrobe and dresser/entertainment center. Guest Heads

- Vanity - Pommele Sapele with Mahogany accents, lightweight stone countertop
- (1) Vitreous china sink, fixtures and accessories
- Glass - Fixed, oval port light with removable stainless deadlight cover
- Lightweight stone flooring
- Headhunter Royal Flush Hydro toilet
- Shower with frameless tempered glass doors
- Thermostat
- Fixtures and Accessories
- Marble threshold

Audio/Video Locker

Locker is located to starboard in the foyer between VIP and Guest Staterooms and contains equipment racks for the yacht's A/V System. Locker is cooled by a dedicated air handler.

Upper Lounge

This is the upper entertaining area located just aft of the Pilothouse with sliding glass doors to the Boat Deck. Upper Lounge:

- Custom bar with three stools

- Game table
- L-shaped sofa
- Coffee table
- Runco TV
- Fire place
- Accent lighting
- Custom window treatments

Upper Lounge Day Head

- Vanity with custom marble
- Mirror
- Headhunter toilet

Galley and Stores

Custom island in galley which allows extra counter space with ample room for food preparation, pantry with dry storage shelves for extended cruising, and various appliances. Main Galley Pantry: Storage cabinets with shelving (full length of port forward bulkhead) Main Galley:

- Refrigerator 48"
- Trash Compactor
- Ovens: (1) conventional, (1) Convection/Steam
- Cook Top: (5) Induction burners
- Dishwasher
- Stainless Steel Microwave Oven
- Hot Water Dispenser
- Overhead extraction fan

Communications

Ship To Ship / Shore VHF

- (2) DSC Furuno FM-8800 in Pilothouse with Emergency battery back-up
- (1) Furuno FM-3000 in the Crew Lounge
- (2) Handheld GMDSS VHF radios w/desktop chargers supplied
- SSS: Furuno FS1570 with DSC capability
- G.P.I.R.B.
- McMurdo SAT Find 406 MHz GPIRB
- S.A.R.T.
- McMurdo Class A SART
- Navtex: Furuno NX700 Paperless Navtex Receiver

SATELLITE COMMUNICATIONS (SATCOM) COMPONENTS:

- Fleet Broadband FB500 for Voice, and Internet Access. Voice connected through Phone System
- VSat Sea Tel Wave Call 4006, Internet/Data connectivity service and (2) VOiP lines
- Satcom "C"
- Furuno Felcom15 Inmarsat SatCom C
- Furuno PP510 Printer
- Furuno Felcom 15 SSAS Upgrade kit
- Furuno GPS Module kit
- Sat Phone: Iridium 9505 with Marine mounting kit

TELEPHONE SYSTEM

Panasonic Digital telephone system with 20 stations and 20 phone units. 2 phone stations have LCD displays and 5 stations are cordless. Cordless phones are located in Master Stateroom, Sky Lounge, Pilothouse, and 2 in Salon (one intended for Aft Deck). Telephone system is connected to Satcom, Cell Phone, two VOiP and Shore Phone voice line. Includes a single 100' Telephone/Cable TV combination shore cord.

Telephone System Components:

- Panasonic PBX TDA 100
- 24 button LCD Display phone (2)
- 24 button speaker phone (13)
- Cordless system phone (5)
- Gangway intercom with sockets at Passerelle
- APC 1000VA 670W Smart UPS
- Shore Phone: Weatherproof phone connection at starboard bustle locker
- Cellular Telephone: (2) Telular SX7e GSM Quad Band GSM Cellular Phone
- WIFI: Marina Hotspot Amplifier, GeoSat ECHP

Steering

- Gyrocompass: Simrad GC-85 Compact System interfaced for display on Autopilot, Radars and Electronic Chart
- Magnetic Compass: Ritchie F600 G-5 mounted centerline at pilothouse helm station. Compass is compensated during normal sea-trials. Vessel is delivered with Deviation Card from that date
- Halcyon fluxgate compass interfaced with Brooks and Gatehouse (B & G) Weather Instruments
- Autopilot: Simrad AP50 with Gyro input and back-up Fluxgate Rate Compass, A dedicated RFU to the steering shelf is added for direct feed to the autopilot

- Depth/Speed/Wind: B & G Hydra 3000 Graphic Function Display includes air temperature, barometric pressure.
- Graphic Function displays in Pilothouse, Crew Lounge
- Color Sounder: Furuno FCV-1200 BB color video sounder with display on BSS
- Doppler Log: Furuno DS80 Doppler Speed Log
- APC 1000VA 670W Smart UPS, full load runtime 6 minutes

- Satellite Television: Sea Tel 4004 TV-At-Sea Gyro stabilized receive antenna with USA and Latin America LNB

Cameras

- (7) PTZ color cameras: (2) in the Engine Room, (1) exterior aft deck port side, (1) exterior aft deck stb. side; (1) starboard side deck, (1) port side deck and (1) on mast are displayed on the CCTV system
- Monitoring Station (With display on BSS)
- Closed Circuit Television
- Night Vision Camera: NVTI 3500
- Quad split screen color display: System controlled by Crestron Controller

Signals and Lights

- Ship's Whistle
- Ship's bell
- Air powered horn (with automated signal timer): Kahlenberg, F-2 five trumpet
- Kahlenberg, M511-A signal timer
- Search Light: (1) Carlisle & Finch, 200 watt xenon, 15 million candlepower; remote controlled

Captain/Crew Quarters

In addition to the accommodation for two in the captain's quarters, crew quarters below decks forward for four in two cabins, each with private head and shower. Crew service access leads up and aft through the Galley area, allowing crew to efficiently perform housekeeping duties. Flooring and wall coverings as determined by designer.

Captain's Quarters

- Double berth
- TV-AN equipment
- Hanging Locker

Captain's Head

- Vanity with sink with mirror above
- Shower with glass door
- Toilet

Engineer's Quarter's

- Access is from the Utility Room and is provided with a Double Berth, A/V entertainment area, and drawers in berth base

Engineer's Head

- Vanity with sink and mirror above
- Shower with glass door
- Toilet

Crew Galley

- Dining settee with table/cabinet
- Washer/Dryer with above locker (2 sets)
- Refrigerator
- Microwave
- TV-A/V equipment
- Counter with sink/cabinet storage

Crew's Quarters: Port and Starboard

- (2) Twin berths
- Hanging locker
- Dresser
- TV-A/V Equipment

Crew Heads: Port and Starboard

- Shower with glass door
- Toilet
- Vanity with sink
- Mirrored Medicine cabinet

Miscellaneous Equipment

- Boarding Stair: (1) 8-step carbon fiber with handrails on both sides, brackets at port and starboard boarding gates, stowed in a recess on the starboard house side
- Boat Hook: (1) 1 1/2" x 8" with chrome plated hook end
- Covers: Sunbrella padded covers for tables and loose deck furniture. Unpadded covers

provided for exterior settee cushions and shore boat. A black-mesh windshield cover is provided for the Pilothouse forward-facing windows

- Cushions: Aft Deck settee, bow settee, and bow sun pad. Sunbrella fabrics with dry fast foam fill. Flybridge sun pad

Safety Equipment

- The vessel is equipped with all safety equipment required for charter service under Cayman Islands Shipping Registry of up to 12 passengers
- Life Raft: Four 10-man Solas approved life rafts mounted on flybridge rails
- Life Preservers: Twenty Four Coast Guard-approved adult life preservers with water lights, and (5) Coast Guard- approved child life preservers with water lights
- Ring Buoys: Four 30" diameter buoys secured on exterior of vessel
- Flares: Flare kit included
- Bell: Perko
- Fire Extinguishers: Dry chemical type installed in suitable locations, (9) 10 lb., (9) 5 lb., and (1) 3 lb., Carbon Dioxide type to be installed in suitable locations, (10) 10 lb.

Time on Machinery

Port Main Engines: 1841 approx. hours, 09/2014 Starboard Main Engines: 1841 approx. hours, 09/2014 Port Generator: 8892 approx. hours, 09/2014 Starboard Generator : 8935 approx. hours, 09/2014

General Construction

CONSTRUCTION AND EXTERIOR FINISH

The hull is fiberglass mat and roving with vinylester resin and PVC linear cores. Structural framing is laid up using a combination of fiberglass and carbon fiber reinforcement. House and deck structures are cored composite construction. Core material and density varies throughout to optimize engineered structures.

LAMINATION: Sprayed exterior gelcoat is followed by fiberglass mat and roving with vinylester resin for the outer skins, vacuum bagged foam core (high density in appropriate areas), and fiberglass mat and roving with vinylester resin for the inner skins. The keel pad, strut palms and stabilizer pads are resin infused using vinylester resin.

HULL STRUCTURE: Hull stringers, webs and stiffeners are fiberglass mat and roving and/or carbon fiber with vinylester resin over foam forms. All soles and structural bulkheads are of fiberglass and foam composite construction infused with vinylester resin. **PAINT**

- Topsides: Alex Seal high gloss polyurethane : Hull and house color is Westport white. Boot stripe is acrylic high gloss black
- Bottom Paint: Two coats of black bottom paint over Interprotect epoxy barrier coat

Systems

FUEL SYSTEM Total capacity (diesel): Approx. 9,965 gal (US) in (6) tanks . Fueling process is via either of two deck fill locations amidships, port and starboard side. All tanks are vented to atmosphere on the stbd side. Fill/transfer system includes a centrifuge, pumps, meter and distribution manifold. All diesel consumers draw from the day tank. Engines and Generators are supplied via priming pumps and filters. During normal operations fuel is transferred to the day tank via the centrifuge . Tank level monitoring is via electronic sensor and display on Vessel Monitoring System with high/low level alarms. All tanks are vented to one 'vent tank' which is monitored for liquid indicating an overflow of any of the attached fuel tanks. Tanks are all aluminum, welded construction with internal baffles. Inspection access ports to be manufactured by Freeman Marine.

TANKS

Fuel Tanks (Diesel):

- #1 Center Tank: approx. 713 gallons
- #2 Center Tank: approx. 790 gallons
- #3 Center (Day Tank): approx. 2134 gallons
- #3 Port and Stbd Tanks: approx. 2934 gallons, each
- #4 Center Tank: approx. 460 gallons

Fuel Tank (Gasoline): approx. 100 gallons, accessible via hatch in swim step
FILL/TRANSFER/USE

- Port & Starboard deck fill; threaded, SS, stamped DIESEL
- Y Strainer: 316 SS, self-cleaning
- Centrifuge: Alpha Laval, 198 GPH (Gallons/Hour); diesel/oil separator
- Primary Pump: AC, 50 GPM
- Secondary Pump: DC positive displacement back-up/priming pump
- Filters: DOC SeaPro 600
- Transfer manifold by Westport Shipyard
- Meter: Electronic turbine with numerical display and automatic pump shut-off

MAIN ENGINES

- Priming Pump: Jabsco 24V DC, 558 GPH
- Filter: SeaPro 600, Dual

GENERATORS

- Priming Pump: Carter, 124V DC, 35 GPH
- Secondary Pump: DC positive displacement back-up/priming pump
- Filter: Racor, 500 Duplex Turbine Series

FRESH WATER SYSTEM The Fresh Water System is comprised of a single, divided and baffled, fresh water tank, two AC supply pumps, suction supply, service, and distribution manifolds, two reverse osmosis water makers, and associated valves, filters, expansion tanks, regulators, and gauges. Freshwater wash-downs are located on all external decks.

- Fresh Water Tank (Divided): Stainless steel, approx. 1726 total gallons
- Purification: Silver ion electrolytic water sterilization system
- UV filters: Two for disinfection of potable water, 29 GPM each
- Water Softener: Yacht Mate DM1000 system, with Swim Platform water connection, plumbed directly to the fresh water tanks, located in the equipment room
- Deck fills: Two stainless steel, 1" round with threaded caps. One quick connect fitting, located on the swim step bustle is plumbed to supply the water softener
- Water makers: (2) Sea Recovery Aqua-Whisper 1800. Reverse osmosis type, for a total capacity of 3600 gallons per day
- Water Heater: Dual element (for fast recovery) water heater, 120 gallon capacity water heater
- Dual particle filters: For removal of sediment, dissolved solids and contaminants to 5 microns plumbed in parallel. Stainless steel canister with replaceable filter cartridges
- Pressure tank: FRP construction located at remote ends of piping system
- Pumps: (2) centrifugal pressure pumps, 30 gpm each, plumbed in parallel for high flow capability

LUBE OIL SYSTEM The vessels main engines and generators can be serviced utilizing an onboard lube oil change system. A new oil tank and a used oil tank are fitted within the engine room. New oil can be filled via 1" W' deck fitting amidships on starboard side while used oil can be offloaded with quick-connect hose. Two air-powered diaphragm pumps are used to transfer to/from locations via hose reels.

- Lube Oil Tanks: 450 gallon total oil capacity in a divided tank, located in the Engine Room bilge area. Tank is made from 5086-H32 Aluminum
- Lube Oil - New: 185 gallons
- Lube Oil- Used: 265 gallons
- Pump: Two (2) air diaphragm pumps
- Fittings: All stainless quick connect fittings
- Deck Plate: Located with midship fuel fill on starboard side

WASTE WATER SYSTEM Description: Black and gray water is routed to an FRP tank. A certified Marine Sanitation Device (MSD) is installed for treatment of all waste water. Tank level monitoring is via electronic sensor and display Vessel Monitoring System with level alarms and all tanks are vented at boot stripe. Discharge is via MSD or direct overboard via diaphragm pump. Also, a dockside pump out connection is located port aft on the swim platform.

- Pumps: High capacity solids handling AC diaphragm pump
- MSD: Certified to meet MARPOL regulations as well as USCG Type II MSD. (Includes chlorine generator)
- Black Water Tank: FRP construction with internal baffles, approx. 1685 gal.
- Gray water collection/movement: Three sumps (crew, guest and engineers) for transfer to black water tank or directly overboard via Y-valve. Westport construction, include primary AC pump and DC back-up pump with strainer, inspection port and alarm on DC pump. A lift station for the galley also acts as a sump pump, but only has an AC pump

COMPRESSED AIR SYSTEM The vessel will have a compressed air system for powering the ship's whistle, gasoline dispensing pump and oil dispensing pump, as well as for use in the machinery spaces for air powered tools. The system consists of compressor, piping system, quick connect fittings, and (3) accumulator tanks.

- Quick Connect Fittings: Located; FWD escape hatch, Port Swim Step, Exterior Bar (port side) on Pilothouse deck and Flybridge Mast Leg (stbd) in storage locker.
- Accumulator tanks: 3 -10 gallon units, 2 in the Engine Room and 1 in the stbd. Flybridge mast leg storage locker.
- Hose/Reel: Reel Craft - Hose 1/2" x 35"
- Compressor: Kaeser 5hp SX-6

BILGE SYSTEM

- The bilge system consists of (5) float switches for all of its watertight compartments, two AC electric bilge pumps, valve manifold, and piping with fixed strainers from each watertight compartment. Float switches will send signals to the Monitoring System when water accumulates in any of the bilge areas. The manifold allows cross over to the fire pump or diesel powered pump for back up.
- Pump, Primary: Centrifugal, 100gpm@10 psi
- Pump, Back-up: See fire main back-up pump
- (Shared on common manifold)

DECK DRAIN SYSTEM All exterior decks are fitted with freeing ports and/or drains with a plumbed piping system. Deck drains are molded portions of the deck and fitted with polished stainless steel grates. All drain piping is of ABS approved materials, PVC - DWV and are led to laminated thru hulls located at the boot stripe with check valves and ball valves. **FIRE HYDRANT SYSTEM** The fire main system consists of (4) fire stations distributed around the vessel, supply piping and (2) pumps. Each station contains a hose, angle valve and high/low volume nozzle. The electric fire pump (primary) can be started from any fire station or locally.

- Hoses (7): 1 ½" x 50' FM listed lay flat type, NPSH thread
- ABS Approved Fire Nozzles: ABS Approved, one at each of (4) hydrant stations
- Pump, Primary: Centrifugal, flooded suction, 66 gpm @ 40psi
- Pump, Back-up: Diesel powered portable, flooded suction centrifugal
- Strainer: Sea suction strainer for fire/bilge manifold, Bronze 2" strainer or equivalent
- Seawater intake: Bronze with stainless steel grate
- Westport design and supply
- Hose Rack: FRP construction, with rolled hose storage in fire station

FIRE SPRINKLER SYSTEM The accommodation space is protected by a sprinkler system that uses vessel's fresh water supply until it is depleted, then automatically, if necessary, switches to seawater. The engine room is protected by a gas smothering FM200 system. Sprinkler system: The system is a pre-charged type, automatic fire suppression system. The piping is to be copper/nickel

(CuNi) tube with Seapress Viega), crimp fittings. The pump unit consists of two pumps, operating individually or in tandem depending on the demand for water as determined by the number of heat sensitive nozzles that have been triggered. A small pressure tank maintains the stand by pressure in the system. A local control panel is located in the engine room and a mimic display is located in the pilothouse. **ENGINE ROOM FIRE SYSTEM** The engine room and ventilation ducts are to be insulated against thermal conductivity meeting the A-30 rating and also to provide effective sound damping.

Insulation: The bulkheads and duct work leading to the engine room are lined with a thermal barrier of insulation.

FM200, Gas smothering system: For engine room protection, manual operation (with 20 second delay) includes discharge of gas and automated shutdown of fuel pumps, intake fans, and exhaust dampers. **GALLEY HOOD FIRE SYSTEM** Description: Independent, fixed system is located in the main Galley in the hood above the stove **SOUND ATTENUATION** Westport Shipyard and J&A Enterprises developed a 'whole Ship' sound reduction plan. Together we developed details and insulation schedules that would maximize noise/vibration reduction. Sound transmission throughout the vessel is controlled in several ways throughout the Westport 40 Meter. Engine room: The engine room sound package consists of reflective barriers and absorptive insulation in addition to vibration/isolation mounting of equipment, piping and wiring that may transmit noise and noise attenuating/watertight doors.

- Watertight doors: Pacific Coast Marine
- Absorptive insulation: Sound Down
- Reflective material: 1/8" to 3/16" aluminum
- Isolation mounts: Various per equipment manufacturer specs

HVAC SYSTEMS - AIR CONDITIONING The interior of the vessel is kept at a constant temperature through the use of a seawater cooled/heated reverse cycle, treated water HVAC system. The capacity is 30 tons and is distributed throughout the vessel via individual room air

handlers of various sizes and BTU ratings. There is one controller for the three air handlers that serve the Master Stateroom and Master Office, one for the two air handlers that serve the formal dining area of the forward Salon, two for the four air handlers that serve the remainder of the Salon, one controller for the four air handlers in the Upper Lounge and one for the two air handlers in the Pilothouse. All other air handlers are each controlled by a separate controller. A portion of the HVAC system provides fresh air make up and provides a clean and healthy atmosphere.

- Marine Air HVAC system: Model # MCWLT-240W (Four compressors).
- Independent seawater intake
- Chillers: 208volt/3phase/60cycle, 30 ton
- Air Handlers: 208volt/1phase/60cycle, various BTU as required by volume being treated, utilizing variable speed hi static DC blowers
- Make up Air: For cycling air through vessel interior

CENTRAL HYDRAULIC SYSTEM The central hydraulic system provides power to the bow and stern thrusters, capstans, anchor winches, and crane/davit. Power is provided to the system from generator driven hydraulic pumps with electric clutches. The system is provided with equal size pumps on both the port and starboard gensets allowing either, or both generators to power the system.

- Gauge package: Includes pressure gauges for each valve manifold
- Bow thruster: 16" dual prop with 'in-hull' hydraulic motor - producing 65hp
- Stern thruster: 16" dual prop with 'in-hull' hydraulic motor and external tube, 55hp
- Davit: Telescope mast with fixed length boom, 3,000# capacity, hydraulic. Nautical Structures, MCA certified with DC powered back-up hydraulic pump
- Passerelle: Double telescoping, rotating hydraulic with handrail and wireless control for Med-style mooring extending 6'-7' past the transom including the following options: Self-supporting; Self-contained hydraulic power pack unit and controls

STEERING SYSTEM Description: Digital hydraulic power steering via engine driven hydraulic pumps on each main engine and manual helm pump located in machinery space. The main steering station in the pilothouse includes full follow-up helm wheel and non follow up 'jog' lever. The wing stations are provided with non-follow-up levers. **DIGITAL HELM**

- Jog Levers: Non- follow-up type
- Rudders: Welded stainless steel construction
- Seals: Dripless type - PYI, PSS type

STABILIZER SYSTEM Stabilization while underway is provided by a pair of fins located approximately amidships and powered hydraulically by an engine driven hydraulic pump. Control is by modern digital 'fly-by-wire' system located in the pilothouse.

At rest stabilization: Zero speed stabilization is accomplished by the stabilizer fins; which are powered by the central hydraulic system in this mode.

Fins: Model Naiad 525 Stabilizer system with 22 square foot fins, one station DATUM control, with oil level warning, unloading valve kits and dual pumps with gauges.

Mooring and Anchoring

Vessel mooring system utilizes a combination of bitts, hawse eyes and winches. The fore deck has two hawse eyes per side, two bitts per side and a pair of mooring winches incorporated with the anchor windlasses. The side decks and aft deck have two hawse eyes per side with two bitts on each side. Additionally there are two mooring capstans and bitts on the swim step for med-style mooring. Vessel anchoring is accomplished through a set of anchor windlasses, anchor chain, Poole style anchors and fair leads (hawse pipe, spill pipe, etc.)

Windlass/winch combination- The foredeck utilizes a combined windlass for anchoring and winch for mooring. The system is mirrored starboard and port and is hydraulically driven, yielding 6000# pull

Anchor windlass: (2) Maxwell Combination tensioner/roller/stopper Controls: (2) Maxwell

Anchor wash-down is via fixed nozzles located in hawse pipes, solenoid controlled valves for port and starboard sides and is supplied with pressurized seawater from the fire main

Hawse Rings, bustle: Mirror polished closed type fit around corner of bustle and bulwark at corners of aft deck (2) Capstans: Maxwell VC3500 (hydraulic), Located in bustle at swim step

Mooring lines: 1 1/4" x 60' double-braided type abrasion resistant with single 36" eye splice, (4) Samson XLS yacht braid, black

Sitts: 19" stainless steel, twelve on main deck and two on Swim Step Bustle insert Fenders: (2) for Tender (about 2 ft.), (2) for Jet Skis (1.25 ft.), (4) White with nylon Rope (5 ft.), (2) White hard Rubber balls. Fender Cuffs: (6) for cap rail, (2) for fashion boards, (6) for bow cap Heaving Lines: 3/4" x 75' with removable monkey's fist (1) Anchor chain: 5/8" stud link galvanized steel, 400' stbd | 300' port, ABS certified. Anchors: Davis Anchor Talon HHP-500 stainless steel, 530# (2) Hawse pipe/Anchor plate: Stainless steel, mirror polished anchor plates for protection of hull, includes stem plate

Mechanical

MTU/DDC 12v4000 Engines; 2735 HP each. They are connected to propellers via 5" Aquamet 22 HS Stainless shafts and remote down angle gearbox. Primary exhaust is underwater at chine while a silenced bypass exits at transom corners. Seawater cooling water is supplied via dual 5" lugged type butterfly valves, bronze Y-strainers and molded FRP scoops with Stainless Steel grates. Main engines: (2) heat exchanger, dual starters and battery charging alternators. Controls: Electronic with throttle synchronizing and LCD data display. DOC/Sturdy throttles and EDM for each engine. Fuel Filters: DDC Sea Pro-600 Marine Gear: Close coupled, 8° down angle, ratio

3.040:1 with trailing pump. - ZF, Mod 4650A Main Exhaust: Stainless steel collector with hard thermal insulation, integral spray ring for 18" main underwater FRP exhaust piping and flanged connections Underwater Exhaust outlet: Molded FRP design with chine exit. Westport Shipyard fabrication By-pass exhaust: 10" FRP piping Silencer: Soundown Propellers: Custom 5 Blade Nibral cast - CNC machined - S Class MTU/DDC 12v4000 Engines; 12 cylinders V-type. Includes seawater pump, heat exchanger, dual starters and battery charging alternators. Controls: Electronic with throttle synchronizing and LCD data display. DOC/Sturdy throttles and EDM for each engine. Fuel Filters: DOC Sea Pro-600 Marine Gear: Close coupled, 8° down angle, ratio 3.040:1 with trailing pump. - ZF, Mod 4650A Main Exhaust: Stainless steel collector with hard thermal insulation, integral spray ring for 18" main underwater FRP exhaust piping and flanged connections Underwater Exhaust outlet: Molded FRP design with chine exit. Westport Shipyard fabrication By-pass exhaust: 10" FRP piping Silencer: Soundown Propellers: Custom 5 Blade Nibral cast - CNC machined - S Class Electrical Source & Power GENERATOR There are two, 80KW electrical generators rated at 1800 rpm, providing AC power at 120-208volU3phase/60 cycle Hz. The generators are located port/starboard in the engine room. Water temperature, oil pressure and hour meters are installed in the distribution panel. Both generators have remote star Ustop in pilothouse. Power Take Off (PTO) and hydraulic pump are installed on both generators for full redundancy. Seamless Power Transfer is standard when switching to/from Generators to Shore power and when switching loads from one generator to the other generator. Generators: Northern Lights, M1064 Series Phase and power factor: Three phase-0.8 power factor. Compound mounts Sound shield

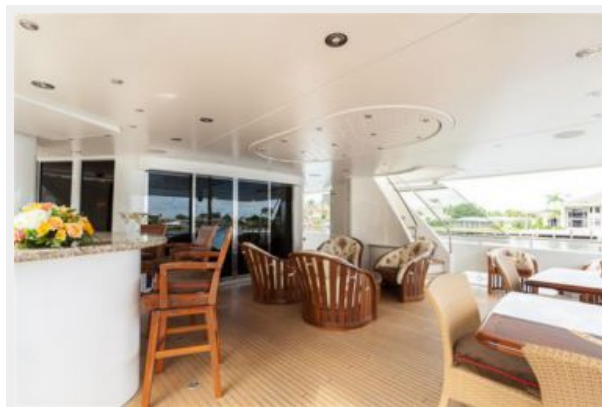
Исключения

При продаже яхты исключаются личные вещи владельца.

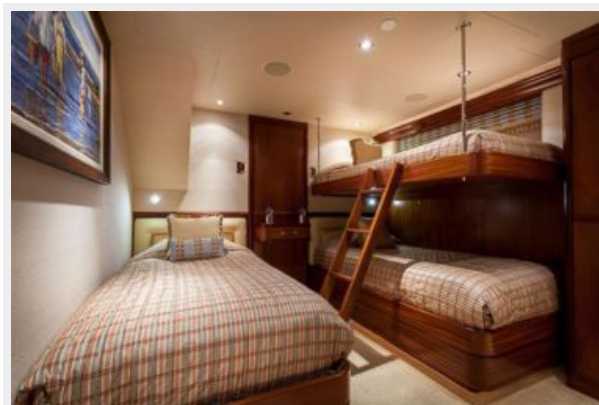
Отказ от ответственности

Компания предоставляет описание судна или яхты добросовестно, но не может гарантировать точность этой информации, а также не ручается за техническое состояние. Покупатель должен проинструктировать своих агентов или оценщиков исследовать представленную информацию более подробно, по собственному желанию. Продажа судна или яхты, изменение цены или снятие с продажи будет происходить без предварительного уведомления.

ФОТОГРАФИИ





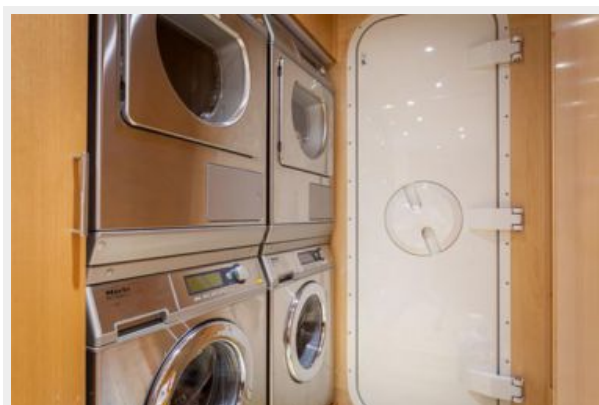












КОНТАКТЫ

Андрей Шестаков (Andrey Shestakov) – ведущий яхтенный брокер отдела продаж яхт и судов компании Shestakov Yacht Sales Inc. Официальный представитель Shestakov Yacht Sales Inc. для русскоговорящих клиентов в центральном офисе компании в Майами/Форт Лодердейл/Флорида/США.

Контактная информация

Email: andrey@shestakovyachtsales.com

Web: shestakovyachtsales.com

Телефоны

Краснодарский край: **+7(918)465-66-44**

США, Майами, Флорида: **+1(954)274-4435**

Время работы

Понедельник – Суббота: **9:00 - 21:00**
EDT

Воскресенье: **Закрето**

Адрес



Harbour Towne Marina, 850 NE 3rd St,
STE 213, Dania, FL 33004