

GYPSY SOUL — NORDHAVN



Builder: NORDHAVN

Year Built: 1999

Model: Trawler

Price: PRICE ON APPLICATION

Location: United States

LOA: 40' 0" (12.19m)

Beam: 14' 6" (4.42m)

Max Draft: 4' 9" (1.45m)

Cruise Speed: 7 Kts. (8 MPH)

Max Speed: 8 Kts. (9 MPH)

Our experienced yacht broker, Andrey Shestakov, will help you choose and buy a yacht that best suits your needs **GYPSY SOUL — NORDHAVN** from our catalogue. Presently, at Shestakov Yacht Sales Inc., we have a wide variety of yachts available on our sale's list. We also work in close contact with all the big yacht manufacturers from all over the world.

If you would like to buy a yacht **GYPSY SOUL — NORDHAVN** or would like help answering any questions concerning purchasing, selling or chartering a yacht, please call **+1(954)274-4435**

TABLE OF CONTENTS

TABLE OF CONTENTS	2
SPECIFICATIONS	5
Basic Information	5
Dimensions	5
Speed, Capacities and Weight	5
Accommodations	5
Hull and Deck Information	5
Engine Information	6
DETAILED INFORMATION	7
GYPSY SOUL	7
Galley	7
Salon	7
Accommodations	7
Pilothouse & Electronics	7
Machinery and Equipment	8
Deck & Hull	8
Electrical	8
Safety	9
Exclusions	9
Exclusions	9
Disclaimer	9
PHOTOS	10
Maintenance Books	10
Maintenance Logs	10
Custom File Drawers	10
Salon Settee	11
Salon Settee	11
Salon	11

Salon Flat Screen TV	11
Galley	11
Galley	11
Galley	12
Galley	12
Working Desk	12
Pilothouse	12
Pilothouse Settee	12
Pilothouse Table	12
Companionway to Staterooms	13
Master Stateroom	13
Master Stateroom Storage	13
Master Stateroom	13
Master Stateroom	13
Master Stateroom	13
Head Vanity	14
Stall Shower	14
Guest Stateroom	14
Port Guest Berths	14
Ground Tackle	15
Washer/Dryer Combo	15
Foredeck Equipment	15
Avon Tender	15
Mechanical	15
Mechanical	15
Mechanical	16
Yanmar Wing Engine	16
Cockpit and Chairs	16
Generator	16

Cockpit Shower	17
CONTACTS	18
Contact details	18
Telephones	18
Office hours	18
Address	18

SPECIFICATIONS

Basic Information

Category: Trawler

Model Year: 2000

Year Built: 1999

Country: United States

Coast Guard #: 1092574

Dimensions

LOA: 40' 0" (12.19m)

LWL: 35' 5" (10.79m)

Beam: 14' 6" (4.42m)

Max Draft: 4' 9" (1.45m)

Speed, Capacities and Weight

Cruise Speed: 7 Kts. (8 MPH)

Max Speed: 8 Kts. (9 MPH)

Max Speed Range: 3000 Kts.

Displacement: 34865 Pounds

Water Capacity: 220 Gallons

Holding Tank: 68 Gallons

Fuel Capacity: 920 Gallons

Accommodations

Total Cabins: 2

Sleeps: 4

Total Heads: 1

Hull and Deck Information

Hull Material: Fiberglass

Engine Information

Engines: 1

Manufacturer: Luger

Model: L668D

Engine Type: Inboard

Fuel Type: Diesel

DETAILED INFORMATION

GYPSY SOUL

GYPSY SOUL is in the water and is easy to inspect in Portsmouth, R.I. GYPSY SOUL is absolutely the finest 40' Nordhavn in existence! Her perfectionist current owner stops at no expense to keep her a showpiece both cosmetically and mechanically. This vessel spent her first 10 years in the fresh waters of The Great Lakes and was winterized in a heated facility, which has greatly contributed to her near perfect gelcoat and condition. Much time and money has been invested upgrading her with electronics and custom features that separate her from any other 40' on the market. She is immediately ready to cruise anywhere, and her Bristol condition will surprise the most discriminating Buyer, as well as the most scrutinizing Marine Surveyor!

Galley

• Located port side up • Corian countertops • New (5/2014) Sub-Zero refrigerator/freezer/icemaker with stainless steel door • GE microwave oven • Exhaust fan • Force 10 Propane cooktop • Force 10 oven • Stainless Steel double sink • Grohe faucet with pull out spray nozzle • Spice rack

Salon

• L Shaped settee with table • Varnished teak and holly flooring with new (6/2014) custom carpet • Custom file drawers, working desk and book shelves • New (5/2014) 32" Flat screen Smart TV • Satellite TV • Sliding screen door • Five (5) Hunter Douglas pleated shades

Accommodations

MASTER STATEROOM • Centerline queen size berth forward with (new 5/2014) custom pillow-top mattress, mattress cover, down comforter and duvet • Live aboard storage capable • Port and Starboard overhead lockers • Two hanging lockers • Small chest of drawers • Dresser • Under berth storage • Floor storage • Built in bench seat • New (5/2014) Flat screen Smart TV on swivel base GUEST STATEROOM • Mid ship port side upper and lower bunks • Lower berth converts to double • Hanging locker • Drawer and locker storage • Splendide washer/dryer combo HEAD • 5/2014 Installed new Head rebuild kit • Groco electric head • Separate walk in stall shower • Drawer and locker storage • Built in medicine cabinet with mirror • Large porcelain sink • Tankwatch monitoring system • 6/2014 Polished all waste plumbing including y-valve

Pilothouse & Electronics

- All Pilothouse windows resealed 5/2014 • Furuno Navnet 3D 12.1" courseplotter 2011 – updated software to most current version 5/2014 • Furuno 6 KW 4' radar 2011 • Furuno GP 330 B GPS receiver 2011 • Furuno FA 50 Class B AIS 2011 • Furuno PG 500 R Heading sensor 2011 • Furuno GP 32 GPS • Raytheon ST 7000 autopilot • Raytheon hailer • Two (2) Standard Horizon VHF (New 5/2014) and new antenna • Raytheon ST 60 Wind/Speed/Depth • Ritchie Compass • Chelsea brass barometer/clock • Nobletec VNS II on laptop computer with full nav charts • Perco 10" spotlight • Interphase Twinscope sonar depth • JVC am/fm/cd player • 12 V defroster • Anchor windless remote • SidePower bow thruster remote • Window shade for windshield • Drop down pilothouse window bug screens • New Flat screen TV in Pilothouse for both rearview cameras and satellite TV • New 5/2014 Bowers and Wilkins speakers for helm TV • Settee with table and watch berth • Two (2) rear back up camera's • New (5/2014) Nextgen remote control extenders for Pilothouse and Master Stateroom TV's

Machinery and Equipment

- Luger LP668 main engine 105 HP 2875 hrs. • Northern Lights 8 KW generator 625 hrs. • Yanmar 3GM wing engine 30 HP 18 hrs. • Dual Racor fuel filters with vacuum gauges • Oil and filter changes on main engine, generator, and wing (6/2014) • X Changer oil change system • Side Power 7 HP bow thrusters (oil changed 6/2014) • Marineair air conditioning with reverse cycle heat • Additional engine room fan added 2014 • Two (2) Rule 3700 GPH bilge pumps • Edson #638 manual bilge pump • Dry stack exhaust • Hot water heater (new 2009) • Naiad stabilizer system with fins (new hydraulic pump, seals, oil & filter (5/2014)) • Seaward Stainless Steel hot water heater • 11' Avon hard bottom tender with Johnson outboard • 5/2014 Replaced all hoses as necessary throughout vessel

Deck & Hull

- Hull is Awlgrippid instead of Gelcoat • Maxwell 3500 windless • Bruce 110 lb anchor with 400' 3/8" chain • Fortress FX 23 aluminum anchor with rope rode • Lewmar 33 lb stern anchor • Stainless Steel bow pulpit with two rollers • Stainless Steel anchor strike • Top quality Stainless Steel cleats and hardware • Windshield wipers • Navigation lights • Built in storage on foredeck • Fresh water on foredeck • Fresh water outlet - aft deck • Port and starboard cockpit boarding door • (9/2014) Bottom painted with Trinidad Pro (2 coats) & renewed all zincs • (9/2014) Full keel cooler rebuild and servicing • Transom door • Port and Starboard transom seating with cushions and built in storage • Two (2) folding cockpit deck chairs • New (6/2014) Hot and cold water cockpit shower including custom shower head mount • New (5/2015) Groco "K" Marine head

Electrical

- Northern Lights 8 KW generator 625 hrs • One (1) 50' 30 amp power cords • One (1) 40' 30 amp power cord • 50 amp to 30 amp Y adaptor • Heart Freedom 3000 inverter/charger • Five (5) 8D

house batteries new (02/2014) • 8D main start battery and 4 D wing engine start battery • 51 new LED lights throughout vessel including new trim rings

Safety

• 6 man life raft with current certification (New 2012) • ACR E.P.I.R.B (New 2012) • Ditch bag with portable VHF and GPS • Coast Guard safety equipment incl, flares, life jackets, throw ring and much more • Fire Boy engine room fire suppression with current certification • Paritec Sea Anchor • Galley propane fume detector • Emergency tiller

Exclusions

• All Owner's personal items and tools

Exclusions

Owner's personal belongings.

Disclaimer

The Company offers the details of this vessel or yacht in good faith but cannot guarantee or warrant the accuracy of this information nor warrant the condition of the vessel. A buyer should instruct his representatives, agents, or his surveyors, to investigate such details as the buyer desires validated. This vessel or yacht is offered subject to prior sale, price change, or withdrawal without notice.

PHOTOS



Maintenance Books



Maintenance Logs



Custom File Drawers



Salon Settee



Salon Settee



Salon



Salon Flat Screen TV



Galley



Galley



Galley



Galley



Working Desk



Pilothouse



Pilothouse Settee



Pilothouse Table



Companionway to Staterooms



Master Stateroom



Master Stateroom



Master Stateroom Storage



Master Stateroom



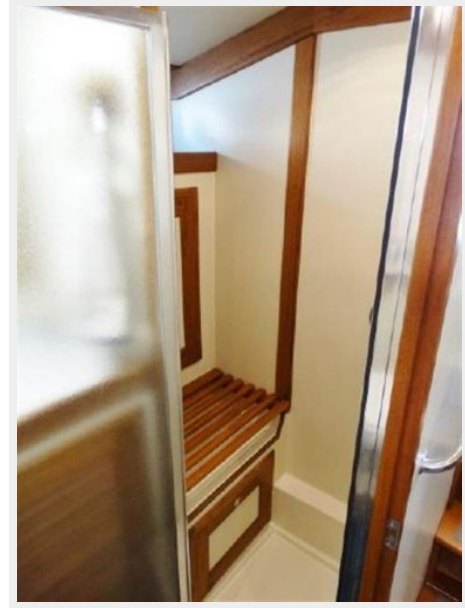
Master Stateroom



Head Vanity



Stall Shower



Guest Stateroom

Port Guest Berths



Washer/Dryer Combo



Ground Tackle



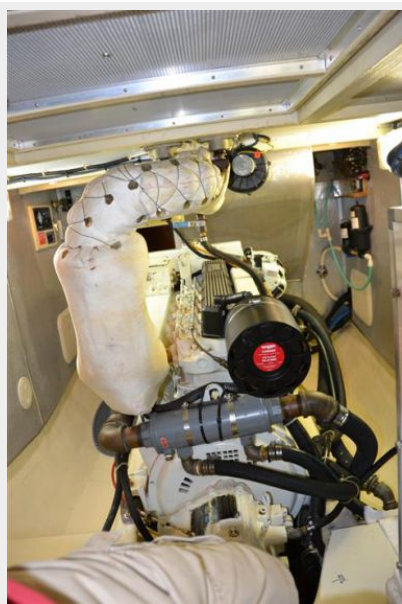
Foredeck Equipment



Avon Tender



Mechanical



Mechanical



Mechanical



Yanmar Wing Engine



Generator



Cockpit and Chairs



Cockpit Shower



CONTACTS

Andrey Shestakov, leading yacht broker of the sales department of Shestakov Yacht Sales Inc. Shestakov Yacht Sales Inc., the official representative of the Miami/Fort Lauderdale FL headquarters.

Contact details

Email: andrey@shestakovyachtsales.com

Web: shestakovyachtsales.com/en/

Telephones

USA: +1(954)274-4435

Office hours

Monday – Saturday: **9:00 - 21:00** EDT

Sunday: **closed**

Address



Harbour Towne Marina, 850 NE 3rd St,
STE 213, Dania, FL 33004