

## FIRST CLASS — BAYLINER



**Builder:** BAYLINER

**LOA:** 45' 0" (13.72m)

**Year Built:** 1986

**Beam:** 15' 0" (4.57m)

**Model:** Motor Yacht

**Price:** PRICE ON APPLICATION

**Location:** United States

Our experienced yacht broker, Andrey Shestakov, will help you choose and buy a yacht that best suits your needs **First Class — BAYLINER** from our catalogue. Presently, at Shestakov Yacht Sales Inc., we have a wide variety of yachts available on our sale's list. We also work in close contact with all the big yacht manufacturers from all over the world.

If you would like to buy a yacht **First Class — BAYLINER** or would like help answering any questions concerning purchasing, selling or chartering a yacht, please call **+1(954)274-4435**

---

# TABLE OF CONTENTS

---

TABLE OF CONTENTS	2
SPECIFICATIONS	3
Overview	3
Basic Information	4
Dimensions	4
Speed, Capacities and Weight	5
Accommodations	5
Hull and Deck Information	5
Engine Information	5
PHOTOS	6
CONTACTS	11
Contact details	11
Telephones	11
Office hours	11
Address	11

---

# SPECIFICATIONS

---

## Overview

---

"FIRST CLASS" is truly a turn key pilothouse yacht that's ideal as a cruiser and/or live aboard and is one of the best big-boat buys in the industry. Her twin diesels are very fuel efficient (see burn rates in specs) and she's been very well maintained both inside and out including her freshly varnished (Captains) brightwork. Her blend of Pacific Northwest styling and comfortable interior accommodations result in a long-range cruising capable yacht with pleasing eye appeal. Her convertible third stateroom with bunks can also be utilized as an office or large hanging closet. The flybridge is great for entertaining with 360 degree views from above while the pilothouse is well protected from the outside elements with ample seating for five. Her owner has upgraded and maintained the vessel extremely well over his 18 year period earning the name "First Class". Her owner was also recently awarded the 2013 "Yachtsman of the Year" by the Florida Council of Yacht Clubs. "First Class" has just returned from a fun filled trip to the Bahamas and is now awaiting a new owner. **Boat Name** First Class **Engines** Engine 1: Engine Brand: Hino Engine Model: H700 Engine Type: Inboard Engine/Fuel Type: Diesel Location: Port Engine Hours: 2275 Engine Power: 220 HP Engine 2: Engine Brand: Hino Engine Model: H700 Engine Type: Inboard Engine/Fuel Type: Diesel Location: Starboard Engine Hours: 2210 Engine Power: 220 HP

## Dimensions

LOA: 45 feet Beam 14.92 feet Bridge Clearance: 22 feet w/ Antennas down Cruising Speed 10 mph @ 1600 rpm (5 gph fuel burn total) 15 mph @ 2300 rpm (8.5 gph fuel burn total) Max Speed is 19 mph

## Engines

Total HP: 220 x 2 = 440 hp Brand Engines: HINO H700 Turbo's Hours: 2200

## Tankage

Fuel: 2 x 250 = 500 gallons total Material: Aluminium

Water: 2 total 135 gallon forward, 65 aft Material: Aluminium Holding: 44 gallons Material: Polypropylene (replaced new in 2003)

## Accommodations

Sleeps six in three private staterooms. The Master has a forward centerline queen with 4 inch foam mattress, private vacuflush head, shower and tub. Aft to port is a small guest quarters with single over 'n under bunks that fold away for desk access and is ideally suited as an office. Moving aft is a mid-stateroom with double berth. Across to starboard is a fully enclosed vacuflush head with stall shower. Aft and up is a U shaped Galley to port with a large

countertop. Across to starboard is a wet bar with storage compartments. Going aft is a full sized salon with L shaped seating to Port with Ultra leather material. All windows have custom blinds and new window tint on all side windows for heat/sun control. A vacuum system covers the interior areas.

## Galley

The spacious U shaped galley features: Deep Double Stainless Sinks w/modern updated faucet Dometic Standup Fridge w/Freezer 110VAC/12VDC new in 2003 Princess Electric Three Burner Range with Oven Whirlpool Trash Compactor Coffee Maker Countertop space Storage in cabinets and drawers

Across from Galley is Wet Bar with Single Sink and Uline Ice Maker

## Electronics

PILOTHOUSE Raymarine e120 GPS Chartplotter w/Radar overlay Raymarine 48 inch Open Array Radar Raystar 120 GPS Antenea Raytheon ST7001+ Autopilot with Wireless Remote Standard Horizon VHF w/DSC Kenwood AM/FM/CD/MP3 w/Aux Input, XM Capable (must subscribe) Interphase 20/20 Fishfinder/Depth/Water Temp Impulse 4100 Depth and Log Control for Bennett Hydraulic Trim Tabs Compass FLYBRIDGE Raymarine e80 GPS Chartplotter w/Radar Overlay (set as repeater) Raytheon ST6000+ Auto Pilot with Wirelss Remote (same as above) Control for Bennet Hydraulic Trim Tabs Pioneer AM/FM/CD/MP3/Aux Input Uniden VHF Compass Intellion HD Satellite System (2012)

## Salon

The full sized salon features an L shaped couch that has been re-upholstered with Ultra Leather material. The recliner is very comfortable for relaxing while watching TV.

## Basic Information

**Category:** Motor Yacht

**Sub Category:** Pilothouse

**Model Year:** 1986

**Year Built:** 1986

**Country:** United States

## Dimensions

**LOA:** 45' 0" (13.72m)

**Beam:** 15' 0" (4.57m)

---

## Speed, Capacities and Weight

---

**Water Capacity:** 135 Gallons

**Holding Tank:** 44 Gallons

**Fuel Capacity:** 500 Gallons

---

## Accommodations

---

**Total Cabins:** 3

---

## Hull and Deck Information

---

**Hull Material:** Fiberglass

---

## Engine Information

---

**Engines:** 2

**Manufacturer:** Hino

**Model:** H700

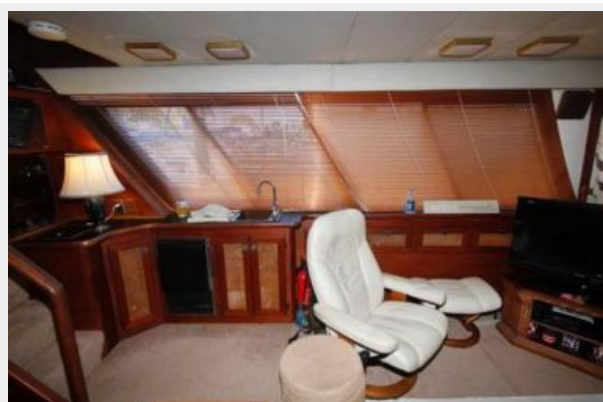
**Engine Type:** Inboard

**Fuel Type:** Diesel

# PHOTOS



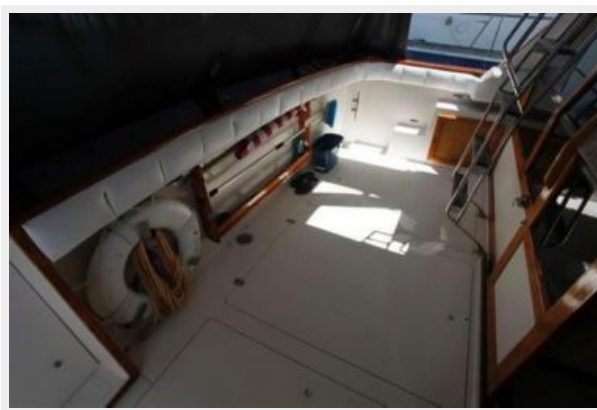












# CONTACTS

---

Andrey Shestakov, leading yacht broker of the sales department of Shestakov Yacht Sales Inc. Shestakov Yacht Sales Inc., the official representative of the Miami/Fort Lauderdale FL headquarters.

## Contact details

---

Email: **andrey@shestakovyachtsales.com**

Web: [shestakovyachtsales.com/en/](http://shestakovyachtsales.com/en/)

## Telephones

---

USA: **+1(954)274-4435**

## Office hours

---

Monday – Saturday: **9:00 - 21:00 EDT**

Sunday: **closed**

## Address

---



Harbour Towne Marina, 850 NE 3rd St,  
STE 213, Dania, FL 33004