

## FIRST LOOK — HATTERAS



**Builder:** HATTERAS

**Year Built:** 1988

**Model:** Motor Yacht

**Price:** PRICE ON APPLICATION

**Location:** United States

**LOA:** 38' 0" (11.58m)

**Beam:** 13' 5" (4.09m)

**Max Draft:** 4' 8" (1.42m)

Our experienced yacht broker, Andrey Shestakov, will help you choose and buy a yacht that best suits your needs **First Look — HATTERAS** from our catalogue. Presently, at Shestakov Yacht Sales Inc., we have a wide variety of yachts available on our sale's list. We also work in close contact with all the big yacht manufacturers from all over the world.

If you would like to buy a yacht **First Look — HATTERAS** or would like help answering any questions concerning purchasing, selling or chartering a yacht, please call **+1(954)274-4435**

---

# TABLE OF CONTENTS

---

TABLE OF CONTENTS	2
SPECIFICATIONS	3
Overview	3
Basic Information	7
Dimensions	7
Speed, Capacities and Weight	7
Accommodations	7
Hull and Deck Information	7
Engine Information	8
PHOTOS	9
CONTACTS	14
Contact details	14
Telephones	14
Office hours	14
Address	14

---

# SPECIFICATIONS

---

## Overview

---

**"First Look" is in fantastic condition. She has been lightly used and very well maintained. There are only 510 hours on her 6-71 TI diesels since major overhaul.**

**The H-38 is known for fantastic rough water performance and first rate build quality. Maintenance is as easy as it gets with no exterior wood, and quality components. This Hatteras shows like a much newer yacht. Her owners have relocated and have priced the boat to sell. Make an appointment to see her today, you will not be disappointed! Boat Name First Look Dimensions LOA: 38 ft 0 in Beam: 13 ft 5 in Maximum Draft: 4 ft 8 in Displacement: 28800 lbs Engines Engine 1: Engine Brand: Detroit Year Built: 1988 Engine Model: 6.71TI Engine Type: Inboard Engine/Fuel Type: Diesel Location: Starboard Engine Hours: 510 Drive Type: Direct Drive Engine Power: 475 HP Engine 2: Engine Brand: Detroit Year Built: 1988 Engine Model: 6.71TI Engine Type: Inboard Engine/Fuel Type: Diesel Location: Port Engine Hours: 510 Drive Type: Direct Drive Engine Power: 475 HP Tanks Fresh Water Tanks: (117 Gallons) Fuel Tanks: (490 Gallons)**

## Walk Through

Entering the large hinged door from the cockpit you gain entry to the comfortable salon. The salon features a large L-shaped settee and bar area to starboard, and a well equipped galley and comfortable single chair to port. The interior is finished in beautifully varnished afromosia veneer. Walking forward down a few steps you find the master stateroom with v-berth forward, a guest stateroom with single bunks to starboard, and a large head with separate shower stall to port. The head has access from the master stateroom, or from the main hallway. The main A/C D/C electrical panel is located at the bottom on the stairway. Back in the cockpit, and up the stainless ladder there is a large fly-bridge with additional seating and beautifully varnished ladder-back helm seats.

## Salon

**The main salon is comfortable and well appointed. The varnished interior wood paneling in is very good condition. The cabin sole is carpeted and is clean and in good condition. There is a movable triangle shaped cocktail table that fits in nicely with a large L-shaped settee. There is a large granite topped bar area forward of the settee with built in liquor storage and u-line ice maker. A custom stained glass cabinet offers plenty of bar-ware storage. Opposing the L-shaped settee is a single upholstered swivel chair. Overhead, the headliner is in very good condition, with custom track lighting to port and starboard. A large well equipped galley is located to port. Wood mini-blinds and tasteful window treatments and valances complete the decor.**

- **32" Vizio flat screen television**

- **Stereo system with multiple speakers**
- **12,000 BTU air conditioning system dedicated to salon**

## **Galley**

The galley is located in the shared salon space to port. The beautiful granite counters accent the varnished interior woods perfectly.

- **Granite counters**
- **Dometic AC/DC built in refrigerator**
- **U-line ice maker**
- **Smooth surface two burner electric range**
- **Stainless built in microwave**
- **Single round sink with swiveling faucet**
- **Hot and cold pressurized water**

## **Master Stateroom**

- **Full queen size v-berth**
- **10,000 BTU air conditioner with separate controls**
- **Private entrance to head**
- **Large opening deck hatch**
- **Storage to port and starboard**

### **Guest Stateroom**

- **Twin Bunk beds**
- **Air conditioning vents**
- **Privacy door**
- **Opening port light**

### **Head**

The head and separate shower stall are large, bright and airy. The generously sized shower stall features an frosted glass door privacy door and plenty of space to move around.

- **Electric head**
- **Hand wand show head**
- **Shower sump system**
- **Plenty of cabinet space**
- **AC outlets**
- **Ventilation fan**
- **Large mirrors make the space feel even larger**

### **Mechanical and Electrical**

- **Twin Detroit 6-71 TI's with 510 hours since major overhaul (overhaul in 2002)**
- **10KW Kohler diesel generator (1225 hours- new in 2004)**
- **Two Marine-air AC systems. 12,000 BTU and 10,000 BTU**
- **50A shorepower 120V/220V**
- **Three Abyss LED underwater lights (2009)**

### **Electronics**

- **Furuno GP-1850DF Color plotter and depth sounder**
- **Furuno 48nm CRT radar**
- **Raytheon Autopilot w/ wired remote**
- **Icom M-504 VHF**
- **Uniden UM525 VHF**
- **Datamarine depth**
- **Northstar 800 GPS**
- **Spotlight w/ remote**

### **Flybridge**

- **Varnished teak ladder-back helm seats w/ covers**
- **Large cushioned seating forward of helm w/ cover**
- **Overhead electronics box**
- **Engine controls and gauges**
- **Heavy duty welded aluminum sun cover w/ laced canvas**
- **Removable Eisenglass curtains**
- **Powder coated rocket launchers**

### **Cockpit and Foredeck**

- **Outriggers and gear**
- **Mounting pad for fighting chair**
- **Cockpit coaming cushions in excellent condition**
- **Opening transom/ fish door**
- **Various rod holders on gunnel**
- **A/C power, dock water, and cable TV inlets**
- **Built in sink with freshwater wash-down hose**
- **Built in cockpit storage**
- **Stainless ladder to flybridge**
- **Large fish box in cockpit floor**
- **Lewmar electric windlass**
- **Primary plow anchor w/ swivel and rode**
- **Secondary Danforth anchor (powder-coated)**

### **Brokers Remarks**

**"First Look" is in fantastic condition. She has been lightly used and very well maintained. There are only 510 hours on her 6-71 TI diesels since major overhaul.**

**The H-38 is known for fantastic rough water performance and first rate build quality. Maintenance is as easy as it gets with no exterior wood, and quality components. This Hatteras shows like a much newer yacht. Her owners have relocated and have priced the boat to sell. Make an appointment to see her today, you will not be disappointed!**

---

## Basic Information

---

**Category:** Motor Yacht

**Sub Category:** Convertible

**Model Year:** 1988

**Year Built:** 1988

**Country:** United States

**Fly Bridge:** Yes

---

## Dimensions

---

**LOA:** 38' 0" (11.58m)

**Beam:** 13' 5" (4.09m)

**Max Draft:** 4' 8" (1.42m)

---

## Speed, Capacities and Weight

---

**Displacement:** 28800 Pounds

**Water Capacity:** 117 Gallons

**Fuel Capacity:** 490 Gallons

---

## Accommodations

---

**Total Cabins:** 1

---

## Hull and Deck Information

---

**Hull Material:** Fiberglass

---

## Engine Information

---

**Engines:** 2

**Manufacturer:** Detroit Diesel

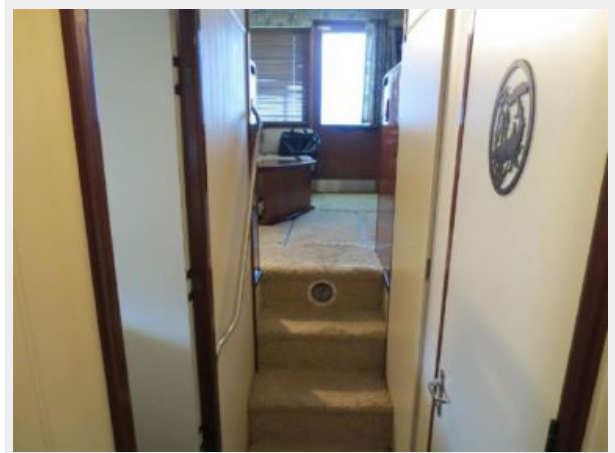
**Model:** 6.71TI

**Engine Type:** Inboard

**Fuel Type:** Diesel



# PHOTOS















# CONTACTS

---

Andrey Shestakov, leading yacht broker of the sales department of Shestakov Yacht Sales Inc. Shestakov Yacht Sales Inc., the official representative of the Miami/Fort Lauderdale FL headquarters.

## Contact details

---

Email: [andrey@shestakovyachtsales.com](mailto:andrey@shestakovyachtsales.com)

Web: [shestakovyachtsales.com/en/](http://shestakovyachtsales.com/en/)

## Telephones

---

USA: +1(954)274-4435

## Office hours

---

Monday – Saturday: **9:00 - 21:00** EDT

Sunday: **closed**

## Address

---



Harbour Towne Marina, 850 NE 3rd St,  
STE 213, Dania, FL 33004