

VALKYRIE SF — CRESCENT



Builder: CRESCENT

Year Built: 2001

Model: Sport Fisherman

Price: PRICE ON APPLICATION

Location: United States

LOA: 120' 0" (36.58m)

Beam: 25' 0" (7.62m)

Min Draft: 6' 6" (1.98m)

Cruise Speed: 17 Kts. (20 MPH)

Max Speed: 21 Kts. (24 MPH)

Our experienced yacht broker, Andrey Shestakov, will help you choose and buy a yacht that best suits your needs **VALKYRIE SF — CRESCENT** from our catalogue. Presently, at Shestakov Yacht Sales Inc., we have a wide variety of yachts available on our sale's list. We also work in close contact with all the big yacht manufacturers from all over the world.

If you would like to buy a yacht **VALKYRIE SF — CRESCENT** or would like help answering any questions concerning purchasing, selling or chartering a yacht, please call **+1(954)274-4435**

TABLE OF CONTENTS

TABLE OF CONTENTS	2
SPECIFICATIONS	6
Overview	6
Basic Information	6
Dimensions	6
Speed, Capacities and Weight	7
Accommodations	7
Hull and Deck Information	7
Engine Information	7
DETAILED INFORMATION	8
Accommodations	8
Salon	9
Dining	9
Day Head	9
Galley	9
Master Stateroom	10
Master Head	10
VIP Stateroom	11
Guest Stateroom 3	11
Guest Stateroom 4	12
Pilothouse	12
Fly Bridge	13
Boat Deck	13
Aft Deck	13
Aft Deck Head	14
Cockpit	14
Side Decks and Foredeck	15
Engineer Room	15

Engineer Stateroom	16
Captains Quarters	16
Crew Stateroom	16
Hull	16
Machinery	17
Communication System	17
Navigation Systems	17
Entertainment System	18
Exclusions	18
Disclaimer	18
PHOTOS	19
Cockpit	19
Cockpit	19
Salon	22
Salon Game Table	22
Dining Forward View	23
Day Head	23
Galley	23
Galley Island	23
Galley Dinette	23
Master Stateroom	23
Master Head	24
Master Walk-in Closet	24
Master Port View	24
Lower Foyer Starboard View	24
Lower Foyer Forward View	24
VIP Stateroom	24
VIP Head	25
Guest Stateroom 2	25

Guest Stateroom 2 Head	25
Guest Stateroom 3	25
Guest Stateroom 3 Head	25
Lower Foyer Laundry	25
Pilothouse Helm	26
Pilothouse Seating	26
Pilothouse Captain's Desk	26
Aft Deck	26
Flybridge Helm	26
Flybridge Seating	26
Boat Deck	27
Boat Deck Cradles	27
Bow Seat and Tanning Pad	27
Engineer's Stateroom	27
Engineer Room	27
Captain's Stateroom	27
Captain's Head	28
Crew Stateroom	28
Crew Head	28
Engine Room Forward View	28
Electronics Room	28
Tenders	28
Bow Shot	29
Stern Shot	29
GA	29
Running	29
CONTACTS	30
Contact details	30
Telephones	30

Office hours	30
Address	30

SPECIFICATIONS

Overview

The 2001/2011 120' Crescent Yachts, "Valkyrie" is a world-class sportfishing yacht and was the brainchild of an experienced yachtsman with specific needs in mind. This specialized vessel has an air draft of 19'6" when her arch is folded for easy access to The Great Lakes, a draft of 6'6" for easy access to The Bahamas, just under 10,000 USG of fuel capacity for 6,000 mile range, an enormous, fully equipped cockpit for billfishing, an 8,000 davit which can launch tenders to port, aft or starboard of the reinforced flybridge, a dedicated gasoline cell for fueling the tenders, 1,800 hp MTU 16V2000 diesels which can provide an 18 knot cruise speed, extra refrigeration and a beautifully decorated interior. She has received over 6 million dollars of continuous maintenance including paint, teak decks and replacement of the original engines with new ones. "Valkyrie" is in top condition and is ready to travel again immediately. "Valkyrie" offers the most effective way to sportfish on a world-class level.

Basic Information

Category: Sport Fisherman

Model Year: 2001

Year Built: 2001

Refit Year: 2011

Refit Type: Mechanical and Exterior

Country: United States

Vessel Top: 2351

Fly Bridge: Yes

Cockpit: Yes

Dimensions

LOA: 120' 0" (36.58m)

Beam: 25' 0" (7.62m)

Min Draft: 6' 6" (1.98m)

Clearance: 19' 6" (5.94m)

MFG Length: 119' 11" (36.55m)

Speed, Capacities and Weight

Cruise Speed: 17 Kts. (20 MPH)

Cruise Speed RPM: 1950 Kts.

Max Speed: 21 Kts. (24 MPH)

Max Speed RPM: 2325 Kts.

Water Capacity: 1202 Gallons

Fuel Capacity: 9550 Gallons

Accommodations

Total Cabins: 4

Total Berths: 6

Sleeps: 8

Total Heads: 6

Captain Cabin: True

Crew Cabin: 3

Crew Berths: 5

Crew Sleeps: 6

Crew Heads: 3

Hull and Deck Information

Hull Material: Fiberglass

Deck Material: Teak over Fiberglass

Hull Configuration: Semi-Displacement

Hull Color: White

Hull Designer: Jack Sarin Naval Architects

Exterior Designer: Jack Sarin Naval Architects

Interior Designer: Robin Rose & Associates

Engine Information

Engines: 2

Manufacturer: MTU

Model: 16V2000 M90

Engine Type: Inboard

Fuel Type: Diesel

DETAILED INFORMATION

Accommodations

Entering the salon through the electrically-actuated door from the aft deck, the open, warm and inviting feel of this yacht is immediately evident. Large windows bring light in and sections of grass cloth combined with fabric-covered furniture and carpet compliment the amazing mahogany woodwork beautifully. Separated from the Salon only by low cabinetry and mahogany columns, the dining area contains a formal table which seats eight. Built-in cabinetry on the bulkhead forward of the table has a granite serving surface above and below a refrigerator and ice machine as well as dedicated china and crystal storage behind mahogany doors with grass cloth inserts. Flanking a large art recess are lit display shelves on either side. Moving forward and to starboard, the entrance to a beautiful day head is followed by a granite floored foyer for a formal side entrance. An art alcove is on the inboard wall and access to the helm stairs and galley are ahead of that. The well-appointed Galley is very large with a four seat breakfast bar/island in the center and seating for eight around a large dinette. Burlled wood inserts for the mahogany cabinets along the forward bulkhead hide clever, additional refrigeration. Forward and to port of the dining room is another side entrance as well as the staircase down to the foyer for the staterooms. Two doors open to the full-beam Master Stateroom, forward. Along with a master head with two vanities and a two person shower, the Master Stateroom is quite grand. Following the trend from the rest of VALKYRIE, beautiful woodwork is everywhere and is accompanied by light-colored grass cloth wall covering and natural light in almost every room providing a bright, open feel even with all the gorgeous mahogany. This balance carries through the other three staterooms accessed from the same foyer. VALKYRIE's pilot house has electronics suited for travelling the world. There are two separate areas for full-sized charts to be used and a captain's office area in view of the helm. A large L-shaped settee is raised to provide excellent views through the upgraded 1" tempered glass windshield sections and a single Stidd captain's chair is within easy reach of the helm and proper navigation equipment. Traveling up from the pilot house, the flybridge helm and two wing stations are properly equipped for easy operation. On the same level, a grill and bar are across from another large seating area. All of this is surrounded by a three sided enclosure. The boat deck was built with a large amount of extra structure to accommodate an 8,000 lb davit which can launch the 24'5" Edgewater center console, the 17'4" Novurania 530 RIB or either of the two Kawasaki skis to port, aft or starboard with minimal lean, by design. The boat deck covers a large aft deck which shades a dining area and additional day head. Facing aft and overlooking the huge fishing cockpit is a long counter with four teak chairs. This is a great place to watch the action in the cockpit which has seen many 1,000 lb. + marlin. A 130lb class fighting chair on an offset lies in the center of the cockpit and just aft of the full function tackle centers and in-deck fish box which is plumbed with chipped ice from the Eskimo machine. Outriggers, rod holders and a tuna door accompany the teak decks and covering boards and there's even a back-down helm station above, facing aft on the boat deck. This amazing yacht was built to travel the world and has been to Alaska, Hawaii, The Galapagos Islands, Australia, The Med and many other places. She has been beautifully maintained and upgraded as needed. She must be seen in order to

understand the multitude of fantastic design features.

Salon

- Starboard Access to Dining and Side Entrance Foyer
- Port Access to Side Entrance and Stairs Down to Staterooms
- Mahogany “Rope” Columns
- Mahogany Crown Moulding
- Mahogany Cabinets Below Windows
- Lockable Storage in Sofa
- Majeure Headliner
- Halogen Lighting (Dimmable)
- Electrically Actuated Blinds
- NEC TV Viewable From Lifted Or Lowered Position
- Kaleidescape A/V
- Crestron A/V Controller
- Surround Speakers in Ceiling
- Electrically Actuated Salon Door

Dining

- U-Line Wine Refrigerator
- U-Line Ice Maker
- U-Line Refrigerator
- Halogen Lighting (Dimmable)
- Electrically actuated Blinds

Day Head

- Headhunter Toilet
- Custom Fixtures
- Granite Counter
- Mahogany Cabinets beneath Sink
- Mahogany Crown Moulding
- Halogen Lighting
- Granite Flooring

Galley

- L-Shaped Galley

- Work Island
- Granite Counter Tops
- Tile Floors with Granite Key Tiles
- Custom Corner SS Cabinet Storage Rack
- Large Capacity Storage Cabinets and Drawers
- (3) Refrigeration/Freezer Units Hidden Behind Cabinet Doors in Fwd Bulkhead
- Large Granite Dinette Table Top With Lockable Slide
- Access to Crew Accommodations Forward
- Privacy Door Hidden In Wall Trim

Master Stateroom

- King-Sized Master Berth
- Gold “Rope” Rails on Shelves
- Panasonic TH-42PW3 42 Inch TV
- Kaleidescape
- Surround Sound
- Halogen Lighting (Dimmable)
- Glass-Front Book Shelves Above Night Stands
- Reading Lamps
- Mahogany Lower Wall Sections and Chair Rails
- Grass Cloth Upper Wall Sections
- Mahogany Crown Moulding
- Mahogany Doors with Burled Wood Inlays
- Desk to Port With Raised Panel Drawer Facing and Burled Cabinet Doors
- Carved Mahogany Seahorse on Cabinetry above desk
- Cedar Lined closet to port
- Chest of Drawers and Cabinets to Starboard
- Walk-In Closet to starboard (With Escape Hatch for Master SR) Port Lights port and starboard

Master Head

- Granite Counters and Flooring
- Gold and Crystal Fixtures
- Mahogany Cabinetry and Trim
- Halogen Lighting (Dimmable)
- (7) Medicine Cabinets Behind Mirrors
- Raised Panel Mahogany Drawers and Cabinets Beneath Counters
- Grass Cloth Wall Covering
- Flush-Mounted Speaker in Ceiling
- Separate Toilet Room

- Large, Walk-In Shower
- (2) Speakman Shower Heads
- Separate Water/Temperature Controls
- Non-Polished Floor Stripes for Non-Skid

VIP Stateroom

- Queen-Sized Bed
- Bed-Side Tables
- Halogen Overhead Lighting
- Halogen Reading Lights
- Mahogany Bookshelf Above Bed
- Padded Headboard
- Large Portlight
- TV
- Mahogany Crown Moulding

VIP Head

- Headhunter Toilet
- Marble Topped Vanity
- Marble Flooring
- Marble Shower
- Gold Fixtures
- Halogen Lighting (Dimmable)
- Mahogany Cabinetry
- Mahogany Crown Moulding
- Hamper
- Drawers
- Port Light

Guest Stateroom 3

- Queen-Sized Bed
- Bed-Side Tables
- Halogen Overhead Lighting
- Reading Lights
- Padded Headboard
- Large Port light
- TV
- Mahogany Crown Moulding

Guest Stateroom Head

- Headhunter Toilet
- Granite Topped Vanity
- Marble Floor with Granite Keys
- Marble Showers
- Nickel and Gold Fixtures
- Halogen Lighting (Dimmable)
- Mahogany Cabinetry
- Mahogany Crown Moulding
- Hamper
- Drawers
- Port Light

Guest Stateroom 4

- Over/Under Bunks
- Halogen Lighting
- Reading Lamps
- Cedar-Lined Closet
- Drawers

Guest Stateroom Head

- Headhunter Toilet
- Granite Topped Vanity
- Granite Shower
- Mahogany Crown Moulding
- Mahogany Cabinets and Drawers
- Mirrored Medicine Cabinet
- Halogen Lighting

Pilothouse

- Main Helm
- Captain's Desk
- Lenovo Computer
- Wireless Keyboard
- HP 6500 Printer/Copier/Fax/Scanner
- NEC AccuSync 193i Monitor
- Chart Storage
- (2) Chart Surfaces with Chart Lights
- Large, Raised L-Shaped Observation Seating with Granite Topped Table
- Bench Seat Adjacent To Helm
- Stidd Captain's Chair

- Halogen Lighting
- Windshield Defrosters
- Upgraded 1" Tempered Glass

Fly Bridge

- Full function Helm
- 3 Stidd Chairs
- Wing Stations with Jog Stick, Throttles/Gears and Bow Thruster Control
- L-Shaped Seating with Dining Table
- Storage Beneath Seating
- Stainless Steel Grill with Propane Storage Beneath
- Refrigerator
- Ice Machine
- Storage Cabinets
- Aluminum, Rigid Top From Arch To Windshield
- Three Sided Enclosure
- Hinged Radar Arch
- Kaleidoscope Music Control

Boat Deck

- 8,000 lb. Capacity Nautical Structures Custom Hydraulic with Telescope, Lift and 270 degree Turn Capability
- 24'5" Edgewater
- 17'4" Novurania
- (2) Kawasaki Skis
- Removable, Flush Mounted Dinghy Cradles
- Fresh Water Quick Disconnect Fitting
- Cushioned Seating w Storage Beneath
- Jerry Can Storage Boxes
- Covered Storage Box Beneath Novurania
- Quick-Deploy Back-Down Station for Aft Rail
- Removable Hoop Rails
- Access to Aft Deck Stairs with Sliding Hatch

Aft Deck

- Dinette
- Air Conditioning Vented Behind Dinette
- Teak Decks

- Wing Doors
- Side Deck Access
- Flybridge Access Steps
- Refrigerator
- Bottle and Glass Storage
- Salon Access
- Port and Stbd Access to Cockpit with Gates
- Aft-Facing Bar Overlooking Cockpit
- Storage Lockers
- Starboard Side Docking Station
- Kaleidescape Music Control

Aft Deck Head

- Vacuflush Head (Separate From Main System)
- Vanity with Sink
- Air Conditioned
- Halogen Lighting
- Accessed From Aft Deck

Cockpit

- 130 lb class Fighting Chair with Offset
- Outriggers
- In-Deck Fishbox
- Eskimo Ice Chipper Discharge in Fishbox
- Rod Holders
- Teak Decks
- Freeing Ports with Closable Covers
- Teak covering Boards
- Transom Tuna Door w Gate
- Tackle Centers
- Bait Freezer
- Cutting Board
- Tackle Drawers
- Gasoline Fueling Hose
- Diesel Fueling Hose
- Live Bait Well
- Lexan Front for Well
- Lights for Well
- Lazarette Access
- Corner Hawse Pipes

- Cleats
- Maxwell VC 3500 Warping Winches
- Quartz Lights

Side Decks and Foredeck

- Teak Decks
- High Bulwarks
- Retractable Rod and Handle Storage in Overheads
- 316L Stainless Steel Rails
- 316L Cleats
- Freeing Ports
- Gates and Doors Through Bulwarks with Tide Ride Steps
- Bow Seating
- Sun Pad
- Bosun's Lockers
- Fire Hose
- Storage for Fire Fighting BAs
- Fuel Ports
- Fresh Water Quick Disconnects
- Compressed Air Quick Disconnect
- Through-Bow Anchoring System
- (2) Maxwell VCW 4500 Windlasses
- (2) 150kg 330lb Bruce SS Anchors
- Ship's Bell

Engineer Room

- Desk
- Systems Monitor
- Laptop
- Work Bench
- Snap-on Built-In Tool Chest
- Vice
- Atlas System
- AC Switching
- Miele Front Load Washer and Dryer
- Pirelli Rubber Flooring
- Dive Locker for BCs, etc.
- Bauer Junior II Dive Compressor
- Water-Tight Door to Cockpit
- Water-Tight Door to Engine room

- Access to Engineer's Stateroom
- Maritron Ship Security and Alarm Control Panel

Engineer Stateroom

- Over/Under Bunks
- Reading Lights
- Halogen Lighting
- Carpet
- Hanging Locker
- Drawers
- Sink, Mirror and Vanity
- En-Suite Head with Shower Stall and Toilet
- TV
- DVD Player

Captains Quarters

- Queen Berth
- Reading Lights
- Halogen Lighting
- Carpet
- Cedar Lined Closet
- Storage Cabinets and Drawers
- En-Suite Head
- Maritron Security and Alarm Control Panel

Crew Stateroom

- V-Berth
- Reading Lights
- Halogen Lighting
- Cedar Lined Closets
- Drawers and Cabinets
- Carpet
- Hall Access to Full Head

Hull

- Sarin Design

- Deep Prop Pockets
- Airex Composite Coring
- Awlgrip Paint above Waterline
- Bottom Paint
- (9) Aqualuma LED Underwater Lights
- Fiberglass over Teak Lower Rub Rails

Machinery

Main Engines Engine Type: Diesel MTU 16V2000 M90 1,800hp Engine Hours: 3,800, 10/2014
 Gearboxes for Main Engines: Twin Disk Drive: Straight Shaft, Fixed Propeller Speed
 Consumption per hours including generator/Range RPM Maximum: 21 knots/2,325 RPM
 Cruising: 17 knots/1,950 RPM Economical: 10 knots/3,550 range/1,170 RPM Extended: 8
 knots/6,000 range/850 RPM

Generators & Electricity Output: 65kw Generators: 2X Northern Lights 65 kw, Stbd: 6248
 SMOH; Port: 7029 SMOH Generator Fuel Consumption: 4 gph Shore Power: 2X 208v Triple
 Phase, 100 ft. Atlas System Glendinning Cablemaster

Batteries Main Engine Starting: 24v (4) 12v SVR Gel Cell House: 24v (12) 2v Gel Cell 2X Trace
 Inverters AC 60Hz DC 24v

Air Conditioning Type: Marine Air Chilled Water (4) Chillers

Other Machinery Watermakers: (2) Village Marine 2,880 GPD Stabilizers: Naiad Multi-Sea 2000
 Bow Thruster: American Bow Thruster (ABT) Hydraulic Steering System: Kobelt Fuel Separator
 & Filtration: DD Sea Pro 511 Sewage System: None Fresh Water System: AC Lube Oil Capacity:
 230 gal Waste Oil Capacity: 230 gal

Communication System

SATcom: Fleet Broadband 250 Voice and Data Vsat: Sea Tel 4006 Telephone System:
 Panasonic KX-DT333 SSB: SEA 235 VHF: Icom WiFi: Onboard WiFi Receiver and Transmitter
 Intercom: Panasonic KX-DT333

Navigation Systems

The Pilothouse and Flybridge electronics are comprised of a combination of well-planned
 equipment and brand new upgrades.

Pilothouse: 2X Furuno MU 190 HD Screens 3X Furuno MU 150 HD Screens Furuno 2135 S
 Band 96 mile Radar Furuno 2115 X band 96 mile Radar Raytheon/Anshutz Pilotstar D Autopilot
 Furuno FCV1200L Color Sounder Furuno NX-300 Navtex Receiver Furuno FA-150 Universal

AIS 2X Furuno RD 33 Information Repeaters 2X Northstar 6100i GPS Sea 235 Single Side Band Radio ICOM IC-M604 VHF ICOM IC-M505 VHF 2X MTU EDM Engine Information Display MTU/DDC Single Lever Gear/Throttle Controls ABT Bow Thruster Control StickTouch Screen Engine Room Blower Controls Naiad Multisea 2000 Stabilizer Controls Thrane and Thrane Satellite Phone Handset 2X Carlisle and Finch Search Light Control Kahlenberg M-511C/D Horn Control Exalto Windshield Wiper/Washer Control PC Navigation System Panasonic KX-DT333 Phone/Intercom 2X Onboard PC's 2X Transas 4000 Navigation Systems

Flybridge: Furuno GP7000F GPS/Chart Furuno RD33 Information Repeater 3X Furuno MU 150 HD Screens Icom M604 VHF Anshutz Pilotstar Autopilot MTU/DDC Single Lever Gear/Throttle Controls AMT Bow Thruster Control 2X Carlisle and Finch Searchlight Control 2X MTU EDM Engine Information Displays

Entertainment System

Audio/Video Equipment Crestron Kaleidescape Media System with (6) players KServer 5000 Crestron Media Controller System CNX-PAD8A

Exclusions

Owner's personal belongings.

Disclaimer

The Company offers the details of this vessel or yacht in good faith but cannot guarantee or warrant the accuracy of this information nor warrant the condition of the vessel. A buyer should instruct his representatives, agents, or his surveyors, to investigate such details as the buyer desires validated. This vessel or yacht is offered subject to prior sale, price change, or withdrawal without notice.

PHOTOS

Cockpit



Cockpit





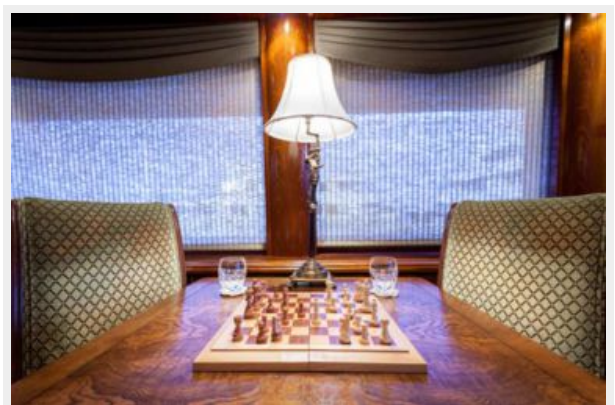




Salon



Salon Game Table



Dining Forward View



Day Head



Galley



Galley Island



Galley Dinette



Master Stateroom



Master Head



Master Walk-in Closet



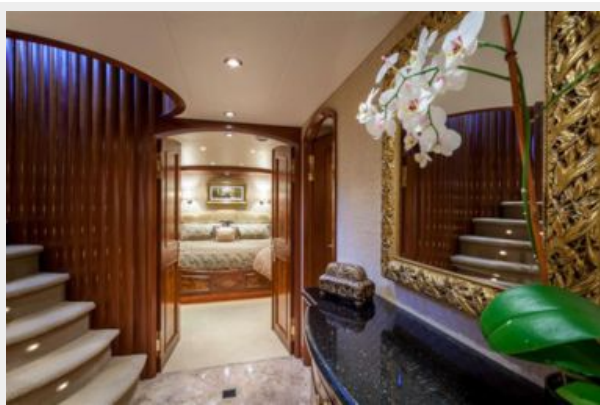
Master Port View



Lower Foyer Starboard View



Lower Foyer Forward View



VIP Stateroom



VIP Head



Guest Stateroom 2



Guest Stateroom 2 Head



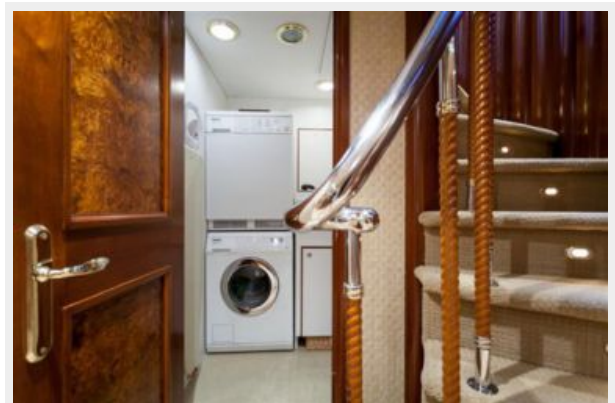
Guest Stateroom 3



Guest Stateroom 3 Head



Lower Foyer Laundry



Pilothouse Helm



Pilothouse Seating



Pilothouse Captain's Desk



Aft Deck



Flybridge Helm



Flybridge Seating



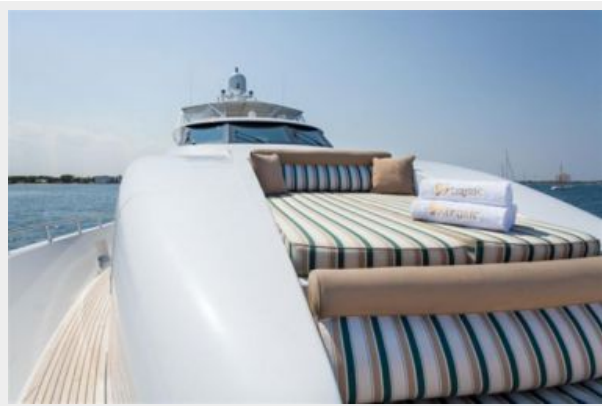
Boat Deck



Boat Deck Cradles



Bow Seat and Tanning Pad



Engineer's Stateroom



Engineer Room



Captain's Stateroom



Captain's Head



Crew Stateroom



Crew Head



Engine Room Forward View



Electronics Room



Tenders



Bow Shot



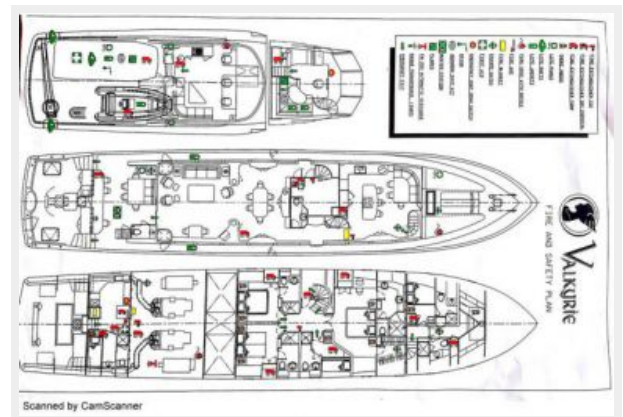
Stern Shot



Running



GA



CONTACTS

Andrey Shestakov, leading yacht broker of the sales department of Shestakov Yacht Sales Inc. Shestakov Yacht Sales Inc., the official representative of the Miami/Fort Lauderdale FL headquarters.

Contact details

Email: andrey@shestakovyachtsales.com

Web: shestakovyachtsales.com/en/

Telephones

USA: +1(954)274-4435

Office hours

Monday – Saturday: **9:00 - 21:00** EDT

Sunday: **closed**

Address



Harbour Towne Marina, 850 NE 3rd St,
STE 213, Dania, FL 33004