

## FIN WAY — VIKING



**Builder:** VIKING

**Year Built:** 2002

**Model:** Motor Yacht

**Price:** PRICE ON APPLICATION

**Location:** United States

**LOA:** 65' 0" (19.81m)

**Beam:** 19' 0" (5.79m)

**Cruise Speed:** 31 Kts. (36 MPH)

**Max Speed:** 39 Kts. (45 MPH)

Our experienced yacht broker, Andrey Shestakov, will help you choose and buy a yacht that best suits your needs **Fin Way — VIKING** from our catalogue. Presently, at Shestakov Yacht Sales Inc., we have a wide variety of yachts available on our sale's list. We also work in close contact with all the big yacht manufacturers from all over the world.

If you would like to buy a yacht **Fin Way — VIKING** or would like help answering any questions concerning purchasing, selling or chartering a yacht, please call **+1(954)274-4435**

# TABLE OF CONTENTS

---

TABLE OF CONTENTS	2
SPECIFICATIONS	5
Basic Information	5
Dimensions	5
Speed, Capacities and Weight	5
Accommodations	5
Hull and Deck Information	5
Engine Information	5
DETAILED INFORMATION	6
Remarks	6
Vessel Walkthrough	6
Galley	6
Companionway	7
Master Stateroom	7
Master Head	7
VIP Stateroom	7
VIP Head	8
Guest Stateroom	8
Guest Head	8
Crew Quarters	8
Flybridge	8
Electronics & Navigation	9
Tower	9
Cockpit	9
Deck Equipment	10
Engine & Mechanical	10
Exclusions	11
Disclaimer	11

Exclusions	11
Disclaimer	11
PHOTOS	12
Salon	12
Salon	12
Salon Seating	12
Salon Seating	12
Salon Ice Maker	12
Dinette	12
Dinette	13
Galley	13
Galley	13
Sub Zeros	13
Laundry	13
Electrical Panel	13
Master Stateroom	14
Master Stateroom	14
Master TV	14
Master Head	14
VIP Stateroom	14
VIP Stateroom	14
VIP Stateroom	15
VIP TV	15
VIP Head	15
Bunk Room	15
Guest Head	16
Crew Quarters	16
Crew Head	16
Helm	16

---

Helm Seating	17
Flybridge Seating	17
Cockpit	17
Cockpit	17
Cockpit	17
Cockpit	17
Cockpit	18
Mezzanine Seating	18
Fighting Chair	18
Rod Locker	18
Engine Room	18
Transom	18
Port Bow	19
Starboard Bow	19
Starboard Profile	19
Transom	19
CONTACTS	20
Contact details	20
Telephones	20
Office hours	20
Address	20

---

# SPECIFICATIONS

---

## Basic Information

---

**Category:** Motor Yacht

**Sub Category:** Convertible

**Model Year:** 2002

**Year Built:** 2002

**Country:** United States

## Dimensions

---

**LOA:** 65' 0" (19.81m)

**Beam:** 19' 0" (5.79m)

## Speed, Capacities and Weight

---

**Cruise Speed:** 31 Kts. (36 MPH)

**Max Speed:** 39 Kts. (45 MPH)

**Water Capacity:** 360 Gallons

**Fuel Capacity:** 2000 Gallons

## Accommodations

---

**Total Cabins:** 4

## Hull and Deck Information

---

**Hull Material:** Fiberglass

## Engine Information

---

**Engines:** 2

**Manufacturer:** MTU

**Model:** 16V2000

**Fuel Type:** Diesel

---

## DETAILED INFORMATION

---

### Remarks

---

**\*\*\*3,000 hour service completed at 3,216 hours\*\*\***

Experience the Viking difference.....with flawless engineering and well-designed styling, the 65' Viking is in a class all its own. Owner wants to move.

**Total Gallons used only 97,000 per engine! Owner requires 24 hour notice before showing vessel.**

### Vessel Walkthrough

---

There are 4 owner & guest staterooms including 4 guest heads with showers, sleeps 8 guests.

The master stateroom is located amidship and features a king size bed centerline with upgraded mattress. The entertainment system features a Sharp 20" LCD flat-screen TV mounted into the wall. Storage areas are twin cedar-lined hanging closets with mirrored door; lift up and drawer storage under bed; teak end tables at forward and aft ends of bed with drawer and door storage, and entry teak credenza with drawer storage.

The VIP stateroom is forward with a 15" JVC TV in teak panel and stereo speakers recessed in headliner; a queen size island berth; a hanging locker; drawer storage under the bed; teak storage cabinets on both sides of the bed. This stateroom also boasts an ensuite head with recessed Halogen lighting; a Headhunter head; and a large stall shower with brass fixtures.

The guest stateroom, located starboard, has upper and lower single berths with storage in the cedar-lined storage below lower bunk and a cedar-lined hanging locker with drawers underneath. The ensuite head has recessed halogen lighting and a stall shower with brass fixtures.

Down a few steps from the main salon to the portside and aft of the master stateroom is the crew quarters/guest stateroom, equipped with upper and lower single berths; cedar-lined locker; and, a private head with shower.

The main salon features entertainment equipment includes a Harmon Kardon upgraded stereo receiver and a Channel Plus system to run salon VCR/DVD throughout entire boat. This boat has the upgraded Premier Edition decor in Indigo Sunrise with custom wrapped fabric valances, wrapped hatch carpet installation, new headliners, U-shaped Ultraleather Chamois-upgraded sofa with plenty of storage underneath, full canvas carpet runners, Hi-Lo teak cocktail table.

### Galley

---

- Large U-shaped dinette with teak table
- Trash compactor
- Hunter Douglas silhouette blinds
- Corian counters - Magna Sahara
- Custom flooring in galley & dinette
- Sharp Microwave/convection oven
- Sub-Zero large capacity refrigerator & freezer (under-counter style with varnished teak faces (2) refrigerator units and (1) freezer unit
- Overhead halogen & fluorescent lighting

---

## Companionway

---

- Kenmore washer/dryer
- Costa canvas carpet runner
- Vacuum system

---

## Master Stateroom

---

- King size berth w/storage below
- Double hanging locker
- (2) End tables w/lamps
- Teak credenza/drawers
- Hatch w/screen and shade
- Private access to head
- Sharp LC-20A2 20 Flat-screen TV

---

## Master Head

---

- Corian countertop
- Mirrored vanity
- Stall shower
- Vacuflush head with porcelain bowl
- Linen closet

---

## VIP Stateroom

---

- Centerline queen size berth w/storage below
- 15" JVC TV
- JVC VCR
- Overhead hatch with shade

- Hanging locker
- Reading lamps

---

## VIP Head

---

- Vacuflush head w/ porcelain bowl
- Mirrored framing around medicine cabinet

---

## Guest Stateroom

---

- Upper/lower berths
- Hanging locker
- Stereo speaker w/remote control
- Access to guest head
- Overhead hatch w/screen and shade

---

## Guest Head

---

- Avonite counter and sink
- Stall shower
- Vacuflush head w/ porcelain bowl
- Mirrored vanity
- Access to companionway and guest cabin

---

## Crew Quarters

---

- Upper/lower berths
- Hanging locker
- Flat screen TV
- Stereo speaker w/remote control
- Access to en-suite head
- Molded Avonite counter and sink
- Stall shower
- Vacuflush head w/ porcelain bowl
- Mirrored vanity

---

## Flybridge

---

- DDEC trolling valves
- Freshwater outlet



- (4) Bose 151 speakers
- (2) Release teak helm chairs
- New refrigerator/freezer
- Freshwater spigot
- Bow thruster control
- Back up controls
- Molded-in 110V spreader lights

---

## Electronics & Navigation

---

- Robertson upgraded compass
- Sat radio - Clarion stereo
- Garmin 5212 GPS/Radar
- Garmin 520 Chirp Sounder 2000
- Furuno 1100L Color Sounder
- Furuno RD 30
- Simrad Auto Pilot
- Icom HF IC MSUZ
- Icom VHF IC M-502
- Icom VHF IC M-504
- Trac Vision SAT TV system

---

## Tower

---

- Custom Pipewelders Hardtop Package
- Bridge release 41' Rupp Outriggers
- Antenna mounts
- (6) Rod holders on rails
- Anchor/running lights, molded in
- Rails: bridge, 3-sided double aft
- Quartz lights (2)
- Teaser reels, US#9 recessed in hard-top
- 2-Red recessed lights 4 blue recessed lights

---

## Cockpit

---

- Mezzanine seating
- Teak deck on mezzanine
- Bait freezer
- Bait box
- Refrigerated drink box

- Live well in cockpit sole
- Fish box in cockpit sole
- Release fighting chair, teak with offset pedestal
- Tackle storage
- Eskimo ice machine with discharge to box
- Transom door
- 24V Electric reel plugs

## Deck Equipment

---

- Snow white gel coated hull
- Navy blue boot top
- Blue bottom paint
- Molded in fiberglass thru hulls
- Bow thruster
- Prop pocket
- Fresh water wash-down in anchor locker
- Anchor locker
- Fortress anchor and rode
- Spare wheels mounted in lazarette
- Transom Hawse pipes
- Awlgripped engine room, anchor locker and lazarette

## Engine & Mechanical

---

- (2) MTU 16V2000 engines rated 1800hp
- 27.5 kW Onan Generator with 1707 hours
- 21.5 kW Onan Generator with 1800 hours
- Dual power steering pumps
- Fuel transfer system
- Racor primary fuel filters
- Shelves over both generators
- Gas water separator for gen exhaust
- Dripless shaft logs
- Oil change system
- Fuel prime pumps
- 1200 GPD water maker Sea Recovery
- Eskimo ice machine
- AC/DC lighting
- **\*\*\*3,000 hour service completed at 3,216 hours\*\*\***

---

## Exclusions

---

Owners personal property.

---

## Disclaimer

---

The Company offers the details of this vessel in good faith but cannot guarantee or warrant the accuracy of this information nor warrant the condition of the vessel. A buyer should instruct his agents, or his surveyors, to investigate such details as the buyer desires validated. This vessel is offered subject to prior sale, price change, or withdrawal without notice.

---

## Exclusions

---

Owner's personal belongings.

---

## Disclaimer

---

The Company offers the details of this vessel or yacht in good faith but cannot guarantee or warrant the accuracy of this information nor warrant the condition of the vessel. A buyer should instruct his representatives, agents, or his surveyors, to investigate such details as the buyer desires validated. This vessel or yacht is offered subject to prior sale, price change, or withdrawal without notice.

# PHOTOS

Salon



Salon



Salon Seating



Salon Seating



Salon Ice Maker



Dinette



**Dinette**



**Galley**



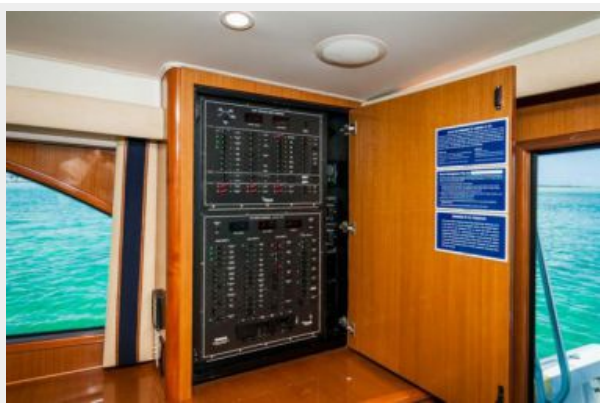
**Galley**



**Sub Zeros**



**Electrical Panel**



**Laundry**





**Master Stateroom**



**Master Stateroom**



**Master TV**



**Master Head**



**VIP Stateroom**



**VIP Stateroom**



**VIP Stateroom**



**VIP TV**



**VIP Head**



**Bunk Room**



### Guest Head



### Crew Quarters



### Crew Head



### Helm





**Helm Seating**



**Flybridge Seating**



**Cockpit**



**Cockpit**



**Cockpit**



**Cockpit**



**Cockpit**



**Mezzanine Seating**



**Fighting Chair**



**Rod Locker**



**Engine Room**



**Transom**



**Port Bow**



**Starboard Bow**



**Starboard Profile**



**Transom**





# CONTACTS

---

Andrey Shestakov, leading yacht broker of the sales department of Shestakov Yacht Sales Inc. Shestakov Yacht Sales Inc., the official representative of the Miami/Fort Lauderdale FL headquarters.

## Contact details

---

Email: [andrey@shestakovyachtsales.com](mailto:andrey@shestakovyachtsales.com)

Web: [shestakovyachtsales.com/en/](http://shestakovyachtsales.com/en/)

## Telephones

---

USA: +1(954)274-4435

## Office hours

---

Monday – Saturday: **9:00 - 21:00** EDT

Sunday: **closed**

## Address

---



Harbour Towne Marina, 850 NE 3rd St,  
STE 213, Dania, FL 33004