

SIMPLICITY — TIARA



Builder: TIARA

Year Built: 1986

Model: Cruiser

Price: PRICE ON APPLICATION

Location: United States

LOA: 36' 0" (10.97m)

Beam: 13' 9" (4.19m)

Max Draft: 2' 11" (0.89m)

Our experienced yacht broker, Andrey Shestakov, will help you choose and buy a yacht that best suits your needs **Simplicity — TIARA** from our catalogue. Presently, at Shestakov Yacht Sales Inc., we have a wide variety of yachts available on our sale's list. We also work in close contact with all the big yacht manufacturers from all over the world.

If you would like to buy a yacht **Simplicity — TIARA** or would like help answering any questions concerning purchasing, selling or chartering a yacht, please call **+1(954)274-4435**

TABLE OF CONTENTS

TABLE OF CONTENTS	2
SPECIFICATIONS	3
Overview	3
Basic Information	7
Dimensions	7
Speed, Capacities and Weight	7
Hull and Deck Information	7
Engine Information	7
PHOTOS	8
CONTACTS	14
Contact details	14
Telephones	14
Office hours	14
Address	14

SPECIFICATIONS

Overview

VERY CLEAN, WELL CARED FOR - YOU WILL NOT BE DISAPPOINTED!!

The knowledgeable 10 year owner of this 1986 Tiara 3600 Open with twin 350 Crusaders has spared nothing in maintaining her as new. Very popular with fisherman and cruisers alike, "Simplicity" is in near new condition inside and out. A very popular express cruiser, she sports a wide beam for sea kindly cruising, top -shelf construction and a very attractive upscale teak interior.

Quote from Power Boat Guide "Few U.S. builders can match Tiara's reputation for engineering and quality, and fewer still exceed the company when it comes to timeless design."

The engines run perfectly, and are professionally maintained, as is the entire boat. With 6'2" headroom, the spacious cabin has a forward island berth with bulkhead and door with private entrance to the head/shower compartment, a convertible dinette that will sleep two, and a full service galley with stove, microwave and refrigerator. She is well equipped with air conditioning, brand new generator and good electronics

The spacious bi-level cockpit has seating and entertainment space for 10-12 people and comes equipped with a wet bar with icemaker, newer canvas, upholstery and coaming pads in like-new condition. Lots of rod holders too!.

Underwater Lighting & Dinghy with 8 HP Outboard included. Boat Name "Simplicity"
Specs Builder: Tiara Yachts Flag of Registry: United States Dimensions LOA: 36 ft 8 in
Beam: 13 ft 9 in Maximum Draft: 2 ft 11 in Displacement: 16500 lbs Deadrise: 14 ° at
Transom Engines Engine 1: Engine Brand: Crusader Engine Model: 350 FWC Engine
Type: Inboard Engine/Fuel Type: Gas/Petrol Location: Starboard Engine Hours: 1400
Drive Type: Direct Drive Engine Power: 350 HP Engine 2: Engine Brand: Crusader Engine
Model: 350 FWC Engine Type: Inboard Engine/Fuel Type: Gas/Petrol Location: Port
Engine Hours: 1400 Drive Type: Direct Drive Engine Power: 350 HP Tanks Fresh Water
Tanks: (85 Gallons) Fuel Tanks: (300 Gallons) Holding Tanks: (35 Gallons) Outside
Equipment/Extras Electric windlass

Vessel Specifications

Accommodations

Sleeps (2) owners/guests in the FORWARD CABIN, plus an additional (2) at the convertible salon dinette for a total of (4) overnight berths; one ENCLOSED HEAD with separate stall shower. GALLEY is amidships to port with convertible DINETTE opposite. BRIDGE HELM offers excellent visibility and double-width helm and companion seats. Expansive COCKPIT

features a handy wetbar; built-in L-shaped guest seating aft; padded coaming; shower; and transom door to the swimstep.

INTERIOR is updated, clean and bright, with top-notch varnished teak joinery nicely offset with formica countertops and fabric upholstery, beige carpet over parquet, electric Raritan vacuum head; (2) built in HD LCD TV's; and Pioneer AM/FM/MP3/Sat/Bluetooth /stereo system.

Galley

All modern GALLEY features include a new 2-burner Princess electric galley stove; Goldstar microwave oven; Norcold AC/DC refrigerator with freezer; double steel sink; teak-fiddled formica countertops; hot/cold pressure freshwater system with hot water heater; and ample cabinet/drawer storage spaces for wares and stores.

Electronics & Navigation Equipment

- Compass
- Raytheon E80 GPS/Radar
- Icom M504 VHF radio

- Raymarine ST 8002 autopilot
- Datamarine depth & temp
- Datamarine speed & distance log
- (2) HD LCD TV's
- Intellian Satellite receiver w/ Dish Network hook-up
- Pioneer AM/FM/MPR/Bluetooth/Satellite Stereo System

Electrical System

12vDC and 110vAC systems with panels and fuse/circuit breaker protection; New 8kW Westerbeke genset with approx. 50 hours and dedicated New Gel start battery; (2) New Gel main engine start batteries, 40-amp battery charger; dual 30-amp dockside electrical inlets with dual 30' shore power cables.

Deck

DECKS are fiberglass with non-skid; bow pulpit; stainless safety rails; fiberglass radar arch; swim platform with swim ladder; transom door; teak cockpit boards on cockpit coaming; dockside water inlet; raw water deck washdown, (4) recessed rod holders; cockpit shower; fenders & lines; life jackets; navigation lights; cockpit lights; (3) windshield wipers. GROUND TACKLE includes main Stainless Steel plow anchor with all chain a New Lewmar foredeck anchor windlass

Stern underwater lighting!

Also included, a Zodiac 10.5 Inflatable dinghy w/ 8 HP Yamaha outboard.

Mechanical & Engine Details

ENGINES are freshwater cooled Crusader 350 HP with fuel filters; control station at bridge helm; trim tabs; sniffer; Halon fire control system; rudder angle indicator; automatic/manual bilge pump(s).

Broker's Comments

**Beautifully kept, nicely updated, well equipped and durably built for active Island cruising!
A great blend of express performance and solid cruising comfort - must see!**

Basic Information

Category: Cruiser

Sub Category: open

Model Year: 1986

Year Built: 1986

Country: United States

Dimensions

LOA: 36' 0" (10.97m)

Beam: 13' 9" (4.19m)

Max Draft: 2' 11" (0.89m)

Speed, Capacities and Weight

Displacement: 16500 Pounds

Water Capacity: 85 Gallons

Holding Tank: 35 Gallons

Fuel Capacity: 300 Gallons

Hull and Deck Information

Hull Material: Fiberglass

Engine Information

Engines: 2

Manufacturer: Crusader

Model: 350 FWC

Engine Type: Inboard

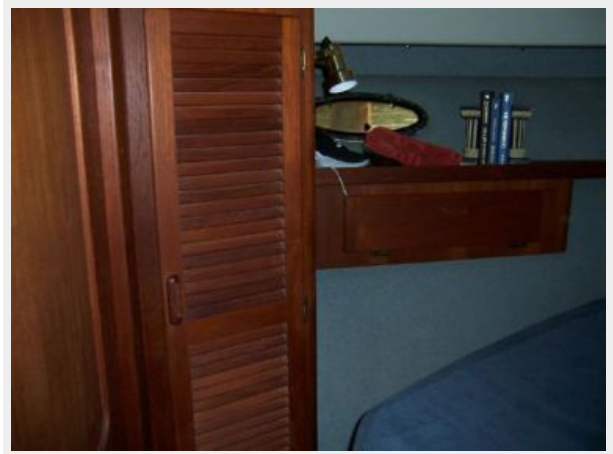
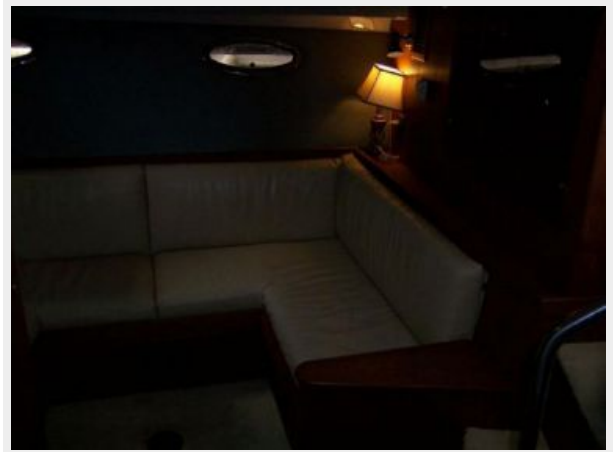
Fuel Type: Diesel

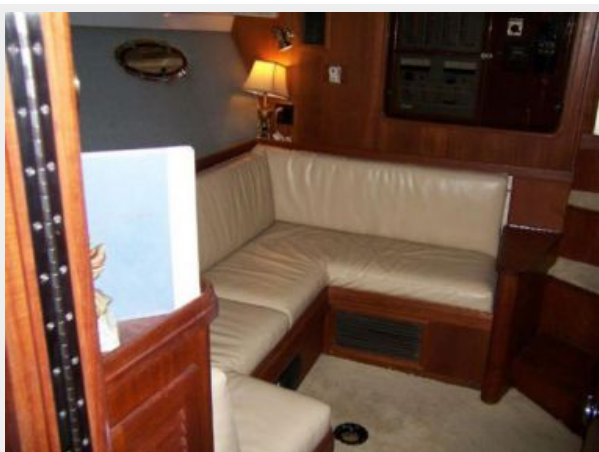
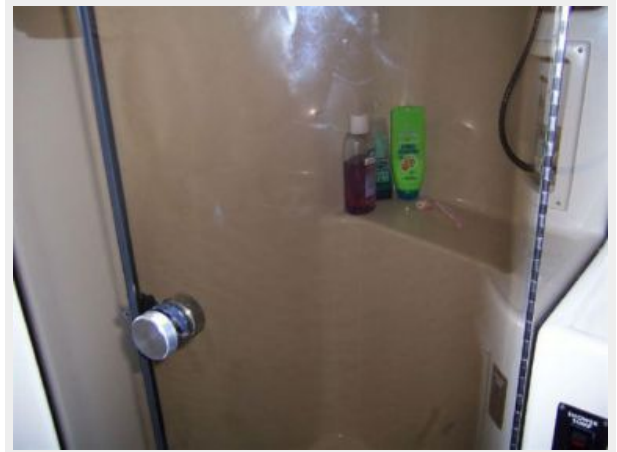
PHOTOS













CONTACTS

Andrey Shestakov, leading yacht broker of the sales department of Shestakov Yacht Sales Inc. Shestakov Yacht Sales Inc., the official representative of the Miami/Fort Lauderdale FL headquarters.

Contact details

Email: andrey@shestakovyachtsales.com

Web: shestakovyachtsales.com/en/

Telephones

USA: +1(954)274-4435

Office hours

Monday – Saturday: **9:00 - 21:00** EDT

Sunday: **closed**

Address



Harbour Towne Marina, 850 NE 3rd St,
STE 213, Dania, FL 33004