

TAYLOR MADE — BURGER



Builder: BURGER

Year Built: 1978

Model: Cruiser

Price: PRICE ON APPLICATION

Location: United States

LOA: 72' 0" (21.95m)

Beam: 18' 5" (5.61m)

Min Draft: 5' 6" (1.68m)

Cruise Speed: 18 Kts. (21 MPH)

Max Speed: 21 Kts. (24 MPH)

Our experienced yacht broker, Andrey Shestakov, will help you choose and buy a yacht that best suits your needs **TAYLOR MADE — BURGER** from our catalogue. Presently, at Shestakov Yacht Sales Inc., we have a wide variety of yachts available on our sale's list. We also work in close contact with all the big yacht manufacturers from all over the world.

If you would like to buy a yacht **TAYLOR MADE — BURGER** or would like help answering any questions concerning purchasing, selling or chartering a yacht, please call **+1(954)274-4435**

TABLE OF CONTENTS

TABLE OF CONTENTS	2
SPECIFICATIONS	5
Overview	5
Basic Information	5
Dimensions	5
Speed, Capacities and Weight	5
Accommodations	5
Hull and Deck Information	6
Engine Information	6
DETAILED INFORMATION	7
Accommodations	7
Master Stateroom	7
Guest Staterooms, Port & Starboard	7
Crew Quarters	7
Galley	7
Mid-Level Salon	8
Pilothouse	8
Flybridge Electronics	8
Flybridge/Boat Deck	8
Main Salon	9
Deck Equipment	9
Engine/Mechanical Equipment	9
Electrical Equipment	9
Comments	10
Exclusions	10
Exclusions	10
Disclaimer	10
PHOTOS	11

Flybridge	11
Flybridge Seating	11
Radar Mast	11
Foredeck	11
Bow Seating	11
Lower Helm	11
Lower Helm Seating	12
Upper Salon	12
Upper Salon	12
Upper Salon Bar	12
Lower Salon	12
Lower Salon	12
Lower Salon	13
Master Stateroom	13
Master Stateroom	13
Master Head	13
Guest Stateroom Port	13
Guest Stateroom Starboard	13
Guest Head	14
Galley	14
Galley	14
Galley	14
Laundry Area	14
Crew Quarters	14
Engine Room	15
Engine, Port	15
Launching	15
Launching	15
Launching	15

CONTACTS	16
-----	-----
Contact details	16
-----	-----
Telephones	16
-----	-----
Office hours	16
-----	-----
Address	16
-----	-----

SPECIFICATIONS

Overview

TAYLOR MADE has had just four owners since her launch on May 19, 1978. She has been kept on the Great Lakes since 1985 and has enjoyed the benefit of fresh water use as well as short seasons since that time. Her overall condition is immaculate. Her Sparkman & Stephens profile is certainly one of the nicest designs on the waterfront.

Basic Information

Category: Cruiser

Model Year: 1978

Year Built: 1978

Country: United States

Vessel Top: Hardtop

Fly Bridge: Yes

Dimensions

LOA: 72' 0" (21.95m)

Beam: 18' 5" (5.61m)

Min Draft: 5' 6" (1.68m)

Speed, Capacities and Weight

Cruise Speed: 18 Kts. (21 MPH)

Max Speed: 21 Kts. (24 MPH)

Water Capacity: 600 Gallons

Holding Tank: 90 Gallons

Fuel Capacity: 2680 Gallons

Accommodations

Total Cabins: 3

Hull and Deck Information

Hull Material: Aluminum

Engine Information

Engines: 2

Manufacturer: Detroit Diesel

Model: 12V71TI

Engine Type: Inboard

Fuel Type: Diesel

DETAILED INFORMATION

Accommodations

TAYLOR MADE offers three double staterooms aft, with separate crew quarters for two.

Master Stateroom

The full width master cabin is aft with walk-around queen sized berth with bedside cabinets to port and starboard as well as bulkhead mounted reading lamps. Bureaus are built-in on each side of the stateroom with numerous drawers and there are large linen drawers beneath the bed. A large, three door closet is to starboard along the forward bulkhead with a two door closet to port. All closets are cedar lined and nicely ventilated with custom louvered doors. There are opening port lights to port and starboard.

The master head is forward to port with a tiled stall shower and Avonite counter tops with ceramic bowl sink. The heads throughout are fresh water flushing Sealand Vacuflush with ceramic bowls.

Guest Staterooms, Port & Starboard

The two guest cabins are forward of the master with a hallway between. Both are furnished with twin lower berths separated by a night stand. The port stateroom has an additional Pullman berth for additional accommodation. Each stateroom has a cedar lined hanging locker. Forward to starboard is a head with stall shower which is to be shared by the two guest staterooms.

Crew Quarters

Crew accommodations are all the way forward, with upper and lower berths to starboard and laundry and locker storage opposite. The crew head and shower are forward of the crew cabin. A crew lounge is aft to starboard and the galley opposite to port. The engine room is accessed from the galley through a watertight engine room bulkhead door.

Galley

The galley was updated several years ago with Corian countertops cabinet doors, tiled backsplash and wall coverings. There is a GE side by side refrigerator/freezer, GE dishwasher, Modern Maid convection oven and four burner range, Samsung microwave, toaster, and coffee maker. The Westinghouse dryer and Splendide washer are forward, as indicated, in the crew quarters. The stainless steel sink is inset into the port side counter with an opening port light outboard. There is plenty of counter space and storage in cabinets above and below.

Mid-Level Salon

Aft from the galley is a spacious salon area with an L shaped sofa sectional forward to port. There is a cocktail table centered and occasional seating opposite. An entertainment center is built in bulkhead cabinetry aft.

Salon Electronics:

Panasonic Color TV Panasonic VHS Niles speaker selector Sony Stereo AM/FM tuner Sony 10 disc CD changer Sony dual cassette player RCA Direct TV receiver Sperry Gyro Compass

Pilothouse

The teak lined pilothouse is positioned approximately midship for maximum comfort. It has a built-in bench seat with seating for three persons facing the fully equipped helm area with chart storage drawers beneath the bench seat. Visibility is excellent from the pilothouse with windows front and rear and on both sides. A stairway aft to port leads up the flybridge area. A hinged door offset to starboard opens to the aft, main salon area.

PILOTHOUSE ELECTRONICS:

Raytheon 610 Chart Plotter Raytheon R-73 Radar Datamarine digital depth sounder Sperry Autopilot Datamarine speed log Raytheon GPS Loran Nav 398 Raytheon Loud hailer Datamarine Wind indicator Raytheon VHF radio Burger integrated alarm system Danforth magnetic compass Controls for engines, stabilizers, trim tabs, air horns, searchlight, synchronizer

Flybridge Electronics

Raytheon Loud hailer ICOM IC M125 VHF radio Danforth magnetic compass Wagner rudder angle indicator Raytheon color echo sounder Furuno radar Bogen intercom system Azimuth fluxgate compass Controls for engines, stabilizers, trim tabs, air horns, searchlight, synchronizer

Flybridge/Boat Deck

The flybridge has a centerline helm station forward with full engine controls and gauges. There is a pedestal mounted helm chair facing forward with excellent visibility over the clear plexiglass windscreen forward. Companion pedestal seats are on each side of the helm seat. There is additional flybridge bench seating to port and starboard and aft just forward of the hinged radar mast and boat deck. Dry storage can be found beneath the bench seating. A bimini top protects the flybridge seating area.

Aft of the flybridge bench seating is the boat deck with a pedestal mounted electric davit.

Main Salon

Aft of the pilothouse is the main salon with large windows port and starboard. Double *French* sliding doors on the aft bulkhead open to the line deck aft. A walk behind bar adjoins the forward bulkhead, with built in sink and refrigerator. A recent refit to this aft salon included beautiful teak panel wainscoating all around and a unique, open beamed overhead with varnished beams. Furnishings include leather upholstered bar stools and leather armrest around the bar. A game table is aft to starboard with four very comfortable club chairs. There are brass lamps adding to the atmosphere and an upholstered sofa aft to port.

Deck Equipment

Aluminum bow rail Varnished teak hand rails Port and starbd boarding gates MarQuipt Sea Stair ladder Boat hook on varnished teak pole Ideal Electric anchor windlass Danforth anchor Foredeck Sampson post Freshwater washdown system Foredeck hatch to crew quarters Cushioned bow seat with storage under Flybridge bimini top (3) pedestal mounted flybridge helm chairs Built-in bench seating on flybridge Fenders and lines Navigation lights Electric search light w/remote control Covers for bow and flybridge seating Dual 3-pack Kahlenberg air horns Two foredeck dunnage boxes Swim Ladder Swim platform 2 throw rings Varnished teak flagstaffs, bow and stern Flybridge stereo speakers 12 life jackets

Engine/Mechanical Equipment

GM 12V71 Turbo main engines Twin Disc transmissions 2.5:1 reduction Walker Airseps 2 Westerbeke 20 kw generators Dual Racor fuel filters for mains and gensets Racor fuel flow pressure gauges Hersey water, fuel, and waste tank gauges Engine room instrument gauges Engine room air exhaust fans Underwater exhaust with side relief valves Spares- 4 blade propellers Spare stub shafts(2) Dripless type stuffing boxes Cruisair reverse cycle air conditioner units Engine room air conditioning Engine room air compressor and storage tank Engine synchronizer Naiad stabilizer system Bennett trim tabs 30 gal. Lube oil & waste oil storage Oil change system Fuel transfer system Engine room work bench Built-in tool chest 40 gallon water heater Grey water holding tank Black Water holding tank 110V freshwater pump 24V freshwater backup pump Sealand Vacuflush system with independent pressure tanks 3 bilge pumps, 1 central and 2 auxiliary Engine room sump system Central vacuum system Bogen intercom system Fiquench Halon 1301 fire suppressant system Florescent 110V engine room lighting Emergency 24V lighting

Electrical Equipment

110V, 220V AC electrical system 12V & 24V DC electrical system 2 Westerbeke 20kw generators Stabiline voltage regulators(2) LaMarche Isolation transformers(2) Capac hull monitor LaMarche 24volt automatic battery charger 2 banks of 12V batteries in engine room 2 banks of

24V batteries in lazarette Dual main engine driven 24V alternators Charles 20 amp C-charger
12V

Comments

TAYLOR MADE has belonged to the same family since 1990 and has only been used seasonally on the Great Lakes for many years. Her interior furnishings are fresh and immediately useable. This same Sparkman & Stephens hull design was the inspiration for Burger's conceptual plans for a limited production revival of the "best traditional designs" by the Burger Boat Company. **TAYLOR MADE** represents an immediate opportunity to own a very clean, very proven, *classic* yacht with an excellent pedigree.

Exclusions

Accessories, personal items, china and stemware, & some artwork

Exclusions

Owner's personal belongings.

Disclaimer

The Company offers the details of this vessel or yacht in good faith but cannot guarantee or warrant the accuracy of this information nor warrant the condition of the vessel. A buyer should instruct his representatives, agents, or his surveyors, to investigate such details as the buyer desires validated. This vessel or yacht is offered subject to prior sale, price change, or withdrawal without notice.

PHOTOS

Flybridge



Flybridge Seating



Radar Mast



Foredeck



Bow Seating



Lower Helm



Lower Helm Seating



Upper Salon



Upper Salon



Upper Salon Bar



Lower Salon



Lower Salon



Lower Salon



Master Stateroom



Master Stateroom



Master Head



Guest Stateroom Port



Guest Stateroom Starboard



Guest Head



Galley



Galley



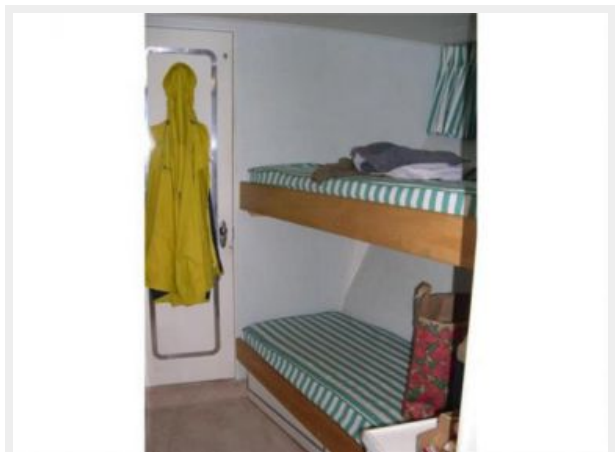
Galley



Laundry Area



Crew Quarters



Engine Room



Engine, Port



Launching



Launching



Launching



CONTACTS

Andrey Shestakov, leading yacht broker of the sales department of Shestakov Yacht Sales Inc. Shestakov Yacht Sales Inc., the official representative of the Miami/Fort Lauderdale FL headquarters.

Contact details

Email: andrey@shestakovyachtsales.com

Web: shestakovyachtsales.com/en/

Telephones

USA: +1(954)274-4435

Office hours

Monday – Saturday: **9:00 - 21:00** EDT

Sunday: **closed**

Address



Harbour Towne Marina, 850 NE 3rd St,
STE 213, Dania, FL 33004