

## UNFURLED — ROYAL HUISMAN



**Builder:** ROYAL HUISMAN

**Year Built:** 2000

**Model:** Cruising Sailboat

**Price:** PRICE ON APPLICATION

**Location:** Spain

**LOA:** 112' 2" (34.17m)

**Beam:** 25' 8" (7.80m)

**Min Draft:** 12' 10" (3.90m)

**Max Draft:** 19' 1" (5.80m)

**Cruise Speed:** 11 Kts. (13 MPH)

Our experienced yacht broker, Andrey Shestakov, will help you choose and buy a yacht that best suits your needs **UNFURLED — ROYAL HUISMAN** from our catalogue. Presently, at Shestakov Yacht Sales Inc., we have a wide variety of yachts available on our sale's list. We also work in close contact with all the big yacht manufacturers from all over the world.

If you would like to buy a yacht **UNFURLED — ROYAL HUISMAN** or would like help answering any questions concerning purchasing, selling or chartering a yacht, please call **+1(954)274-4435**

# TABLE OF CONTENTS

---

TABLE OF CONTENTS	2
SPECIFICATIONS	4
Overview	4
Basic Information	4
Dimensions	4
Speed, Capacities and Weight	4
Accommodations	5
Hull and Deck Information	5
Engine Information	5
DETAILED INFORMATION	6
Detailed Specifications	6
Exclusions	15
Disclaimer	15
PHOTOS	16
Running2	16
Saloon	16
Master Cabin	16
Twin Cabin	16
Master Cabin	16
Transom	16
Galley	17
Evening Exterior	17
Navigation Station	17
Exterior	17
Exterior	17
Exterior	17
Engine Room	18
CONTACTS	19

---

Contact details	19
Telephones	19
Office hours	19
Address	19

---

# SPECIFICATIONS

---

## Overview

---

Built in 2000 by Royal Huisman, 34.17m UNFURLED remains one of the most respected supersail yachts on the water. This year she took 1st place at both the Loro Piana and Palma Superyacht Cup regattas, proving her performance-optimised specification is consistently capable of match winning performances.

With worldwide cruising experience thanks to a transatlantic range, and a bespoke, warm interior with incredible attention to detail, UNFURLED is in a class of her own.

## Basic Information

---

**Category:** Cruising Sailboat

**Sub Category:** Performance Sailboat

**Model Year:** 2000

**Year Built:** 2000

**Country:** Spain

## Dimensions

---

**LOA:** 112' 2" (34.17m)

**LWL:** 95' 11" (29.22m)

**Beam:** 25' 8" (7.80m)

**Min Draft:** 12' 10" (3.90m)

**Max Draft:** 19' 1" (5.80m)

## Speed, Capacities and Weight

---

**Cruise Speed:** 11 Kts. (13 MPH)

**Displacement:** 286600.9406 Pounds

**Water Capacity:** 818.9333612 Gallons

**Fuel Capacity:** 2314.14717552 Gallons

---

## Accommodations

---

**Total Cabins:** 3

**Sleeps:** 6

**Crew Sleeps:** 4

---

## Hull and Deck Information

---

**Hull Material:** Aluminum

**Deck Material:** Teak

**Hull Color:** White

**Exterior Designer:** German Frers

**Interior Designer:** Andrew Winch

---

## Engine Information

---

**Engines:** 1

**Manufacturer:** MTU

**Model:** 6R 183 TE72

---

# DETAILED INFORMATION

---

## Detailed Specifications

---

### GENERAL

<b>Type</b>	Sloop Rigged Sailing Yacht	
<b>Year Built</b>	2000	
<b>Builder</b>	Royal Huisman Shipyard	
<b>Classification</b>	ABS for Hull and Systems for Pleasure Craft	
<b>Dimensions</b>	Length O.A.	34.17m (112.2ft)
	Length W.L.	29.22m (95.87ft)
	Beam	7.8m (25.58ft)
	Draft	3.9m (12.8ft) – Daggerboard up
		5.8m (19ft) – Daggerboard down
<b>Tonnage</b>	Displacement	130 tonnes
<b>Naval Architect</b>	German Frers	
<b>Interior Designer</b>	Andrew Winch Design Group / Oliver Sterling	

---

**Construction** Hoogovens 'Alustar' Aluminium / H321 hull for sheets,  
'Alustar' H112 for extrusions SS bolted on daggerboard  
keel

**Accommodation** 6 Guests in 3 Cabins

## MACHINERY

**Main Engines** MTU 6R 183 TE72, 305kW, 415 HP @ 1,900 rpm

**Engine Hours** – Sept. 2014 15,611

**Gear Boxes** ZF 360A (New 2013)

**Shaft & Propellers** Lips 3 Blade VPP

**Bow & Sternthruster** Hundersted FT-22

**Speed** 10.5 knots

**Range** Transatlantic @ 9 knots (2100Nm)

## AUXILIARY MACHINERY & ELECTRICAL SYSTEMS

<b>Generators</b>	2 x Northern Lights M1064TI 50 KW
<b>Generator Hours – Sept. 2014</b>	Port – 15,364 Starboard – 15,161
<b>Electricity</b>	2 Service battery banks (in total 3000 Ah) for the 24 VDC power supply
<b>Converter</b>	ASEA AC45HF

## TANK CAPACITIES (APPROXIMATE)

<b>Fuel</b>	8,760 L
<b>Water</b>	3,100 L
<b>Hot Water</b>	Fwd. 120 L / Aft 120 L
<b>Lube Oil &amp; Waster Oil</b>	200 L (each)
<b>Grey &amp; Black Water</b>	Hamann sewage treatment system, 540 / 650 L BW

## ANCILLARY EQUIPMENT

<b>Steering System</b>	Cable steering, hydraulic only for AP & Emergency
------------------------	---



<b>Rudder</b>	New Rudder 2010
<b>Bow Thruster</b>	Hundersted Propeller a/s, 50 HP retractable thruster
<b>Fuel Separator &amp; Filters</b>	Facet MV-11-AD Special
<b>Fire &amp; Bilge Pump</b>	Bilge – Spate HYD 756 Fire – 380 Vac Johnson 99/09657401
<b>Sewage Treatment Systems</b>	Hamann Super Mini SM 1012
<b>Waste Pump</b>	Sealand M Series, Diaphragm Pump
<b>WC's</b>	Raritan Atlantes / Crown Heads
<b>Air-Conditioning</b>	H&H OAB-99-065JB, 3 Compressors (Marine Air)
<b>Water Makers</b>	HEM 30/3200 modular, capacity 12 m <sup>3</sup> a day
<b>Compressed Air</b>	Atlas Copco LE-15
<b>Refrigeration</b>	2 x Fridge – Air cooled custom 2 x Freezer – Full redundancy – water cooled

## OFFICE EQUIPMENT

	3 x HP compact for ships monitoring system
<b>Computers</b>	1 x HP compact for navigation

---

1 x HP compact for communication

**Printer / Scanner / Fax** HP Laserjet 100

## COMMUNICATION EQUIPMENT

<b>Satcom</b>	FB 250
<b>VHF Radio Telephones</b>	Simrad RS87
<b>UHF Radio Telephones</b>	N/A
<b>Telephone Exchange</b>	PBX
<b>Intercom System</b>	Panasonic KX-TCA 256 phone sets

## NAVIGATION EQUIPMENT

<b>AIS</b>	Furuno FA 50 (New 2014)
<b>Chart Plotter</b>	Maxsea Timez EPO
<b>Automatic Pilot</b>	Seegetron
<b>Gyro Compass</b>	Sperry / C. Plath Fibre Optic Compass 2100
<b>Radars</b>	Furuno Nav Net 3D BB & MFD8

**GPS** Lecia MX10 & Furuno

**Sat-C** Thrane & Thrane

**Echo Sounder & Wind instruments** B&G H3000

## DECK EQUIPMENT

**Anchor** 1x Steen SS hydraulic anchor winch with swing over system for CQR anchor

**Winches** Rondal reel winches and Lewmar S/S self-tailing winches

**Spars** Marten Spars carbon fibre mast and southern spars in boom furling (new 2010)

**Standing Rigging** Southern Spars EC6 continus rigging

## SPAR DIMENSIONS

Main mast dimensions

**L** 43.39m (142.36ft)

**P** 39.5m (129.59ft)

**E** 14m (45.93ft)

---

**J** 11.7m (38.39ft)

## SAIL AREA

North Sails

**Main sail** 277m<sup>3</sup>

**Fore triangle sail** 254m<sup>3</sup>

**Total sail area** 530m<sup>3</sup>

## SAFETY AND SECURITY EQUIPMENT

### Medical

MSOS Offshore Kit

**2 x**

2 x Drager CFIS B/A

12 Fire Extinguisher

Engine Room FM 200

1 x Fire Suit

### Security

N/A

## AUDIO / VISUAL ENTERTAINMENT SYSTEMS

	1 x LG 40" Saloon
<b>Televisions</b>	1 x Samsung 40" Master Cabin
	2 x Samsung 21" Guest Cabins
	1 x Samsung 32" Crew Mess
<b>Satellite Televisions</b>	Coastal 24; Sky Italian, Direct TV Cable
<b>Video Recorders / Players</b>	Denon
<b>Entertainment</b>	Denon Amp Saloon
	Sonos; Master Cabin / Bathroom, Saloon, Cockpitt
	2 x Denon Amp / DVD Guest Cabins

## DOMESTIC EQUIPMENT

	1 x Uline Ice Maker
	1 x SMBC Gas Hob (5 Burner)
<b>Main Galley</b>	2 x Miele Oven
	1 x Miele Combi Oven
	1 x Miele Dishwasher 47856 (New 2012)
	2 x Galley Fridge

---

<b>Refrigeration</b>	2 x Galley Freezer
	1 x Saloon Bar Fridge
	1 x Cockpitt Fridge
<b>Laundry</b>	1 x Miele MG PW 6065 Washer
	1 x Miele MG PT 7136 Dryer

## TENDER

**Builder** Custom CAT, Prestige, built to fit in lazarette

**Year Built** 2008

**Dimensions** 4.8m

**Engine** 40 HP Yamaha

**Speed** 26 knots

## DISCLAIMER

These particulars have been prepared by Y.CO from information provided by the seller's and are intended as a general guide to the vessel. Y.CO cannot, however, be liable for any inaccuracy. It is up to the purchaser to confirm details of concern to him by survey, inspection and/or enquiry of the seller and to ensure that the purchase contract properly reflects his concern and specific details upon which he may rely. Y.CO always advises an independent survey.

## Exclusions

---

Owner's personal belongings.

## Disclaimer

---

The Company offers the details of this vessel or yacht in good faith but cannot guarantee or warrant the accuracy of this information nor warrant the condition of the vessel. A buyer should instruct his representatives, agents, or his surveyors, to investigate such details as the buyer desires validated. This vessel or yacht is offered subject to prior sale, price change, or withdrawal without notice.

# PHOTOS

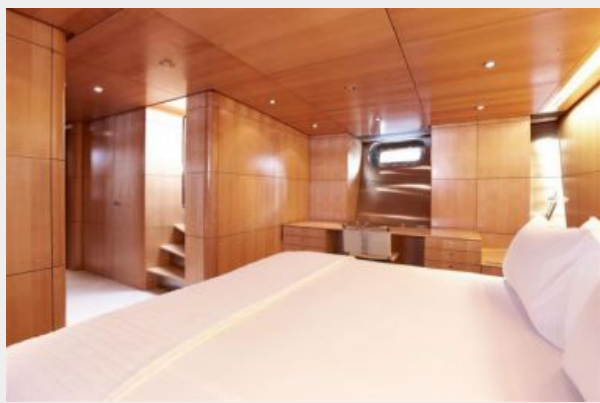
**Running2**



**Saloon**



**Master Cabin**



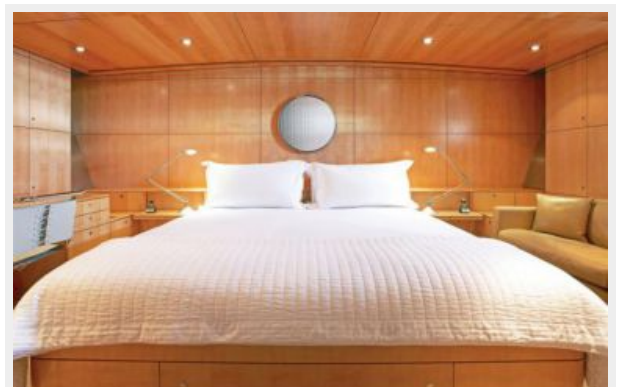
**Twin Cabin**



**Transom**



**Master Cabin**





**Galley**



**Evening Exterior**



**Navigation Station**



**Exterior**



**Exterior**



**Exterior**



## Engine Room



# CONTACTS

---

Andrey Shestakov, leading yacht broker of the sales department of Shestakov Yacht Sales Inc. Shestakov Yacht Sales Inc., the official representative of the Miami/Fort Lauderdale FL headquarters.

## Contact details

---

Email: [andrey@shestakovyachtsales.com](mailto:andrey@shestakovyachtsales.com)

Web: [shestakovyachtsales.com/en/](http://shestakovyachtsales.com/en/)

## Telephones

---

USA: +1(954)274-4435

## Office hours

---

Monday – Saturday: **9:00 - 21:00** EDT

Sunday: **closed**

## Address

---



Harbour Towne Marina, 850 NE 3rd St,  
STE 213, Dania, FL 33004