

TRAVELER — VENTURE MARINE



Builder: VENTURE MARINE

Year Built: 2006

Model: Center Console

Price: PRICE ON APPLICATION

Location: United States

LOA: 34' 0" (10.36m)

Beam: 10' 0" (3.05m)

Min Draft: 1' 9" (0.53m)

Max Draft: 2' 4" (0.71m)

Cruise Speed: 35 Kts. (40 MPH)

Max Speed: 55 Kts. (63 MPH)

Our experienced yacht broker, Andrey Shestakov, will help you choose and buy a yacht that best suits your needs **Traveler — VENTURE MARINE** from our catalogue. Presently, at Shestakov Yacht Sales Inc., we have a wide variety of yachts available on our sale's list. We also work in close contact with all the big yacht manufacturers from all over the world.

If you would like to buy a yacht **Traveler — VENTURE MARINE** or would like help answering any questions concerning purchasing, selling or chartering a yacht, please call **+1(954)274-4435**

TABLE OF CONTENTS

TABLE OF CONTENTS	2
SPECIFICATIONS	3
Overview	3
Basic Information	3
Dimensions	3
Speed, Capacities and Weight	3
Accommodations	3
Hull and Deck Information	4
Engine Information	4
DETAILED INFORMATION	5
Introduction	5
Cockpit	5
Fishing Equipment	5
Electronics and Navigational Equipment	5
Remarks	6
Exclusions	6
Disclaimer	6
PHOTOS	7
CONTACTS	17
Contact details	17
Telephones	17
Office hours	17
Address	17

SPECIFICATIONS

Overview

This is a lightly used, immaculate, late model 34' Venture with desirable Mercury Verado power. All service up to date, HD lower units, great electronics and stereo. Ready to go!

Basic Information

Category: Center Console

Sub Category: Walk-around

Model Year: 2006

Year Built: 2006

Country: United States

Vessel Top: 2363

Cockpit: Yes

Dimensions

LOA: 34' 0" (10.36m)

Beam: 10' 0" (3.05m)

Min Draft: 1' 9" (0.53m)

Max Draft: 2' 4" (0.71m)

Speed, Capacities and Weight

Cruise Speed: 35 Kts. (40 MPH)

Max Speed: 55 Kts. (63 MPH)

Displacement: 6800 Pounds

Water Capacity: 50 Gallons

Holding Tank: 11 Gallons

Fuel Capacity: 300 Gallons

Accommodations

Total Heads: 1

Hull and Deck Information

Hull Material: Fiberglass

Deck Material: Fiberglass

Hull Configuration: Deep Vee

Engine Information

Engines: 2

Manufacturer: Mercury

Model: Verado

Engine Type: Outboard

Fuel Type: Gas

DETAILED INFORMATION

Introduction

The 34' Venture needs no introduction. The boat has top shelf construction and gives exceptional offshore performance while having exemplary fit and finish throughout with state-of-the-art construction, solid fiberglass hull and PVC foam cored hull sides.

Cockpit

- 55 Gallon Transom Livewell
- Bait Prep Station with Sink
- Freshwater and Saltwater Washdowns
- In-Deck Storage Boxes
- (3) Fishboxes
- Walk-in Head with Sink and Shower
- 48" Tackle Master Helm Seat

Fishing Equipment

- 55 Gallon Transom Livewell
- (3) Fishboxes
- 750 Qt Cockpit Fishbox
- (2) 250 Qt Fishboxes - Forward
- 48" Baitmaster Leaning Post with Tackle Storage
- LEE 18' Sidewinder Riggers

Electronics and Navigational Equipment

- (2) NavNet VX2 Units
- Furuno RD-30 Depth Finder
- TR-1 Autopilot
- Icom IC-M502 VHF
- Fushion MS-IP600 Head Unit
- (4) JL Audio 7.7" Coax Speakers
- (4) JL Audio 6.5" Coax Speakers
- Furuno 24 Mile 4kW Radar
- (4) Odyssey Batteries - **New July 2014**

Remarks

Over \$13,000.00 on engine and mechanical service just completed to make the boat turn-key in every way. Receipts available upon request.

Exclusions

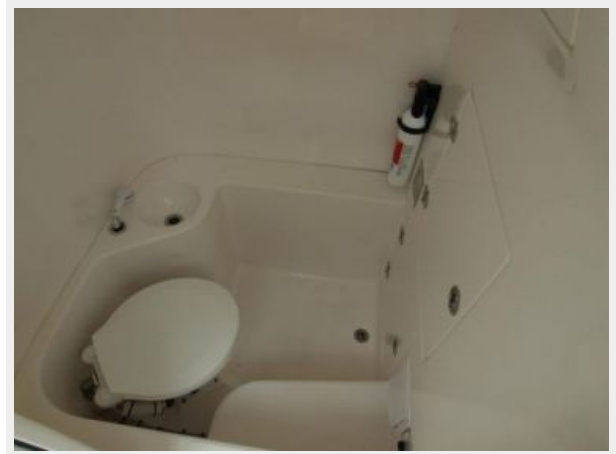
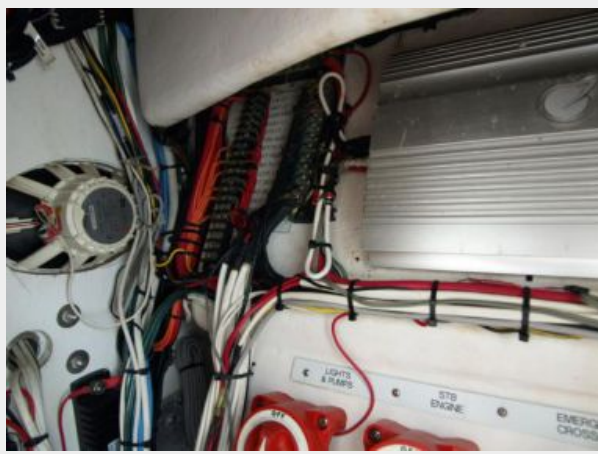
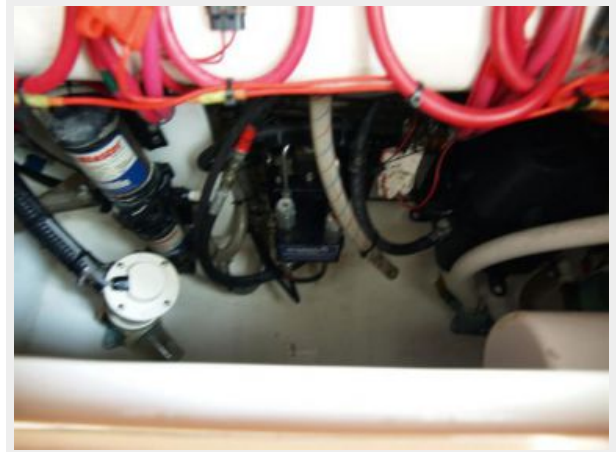
Owner's personal belongings.

Disclaimer

The Company offers the details of this vessel or yacht in good faith but cannot guarantee or warrant the accuracy of this information nor warrant the condition of the vessel. A buyer should instruct his representatives, agents, or his surveyors, to investigate such details as the buyer desires validated. This vessel or yacht is offered subject to prior sale, price change, or withdrawal without notice.

PHOTOS





















CONTACTS

Andrey Shestakov, leading yacht broker of the sales department of Shestakov Yacht Sales Inc. Shestakov Yacht Sales Inc., the official representative of the Miami/Fort Lauderdale FL headquarters.

Contact details

Email: andrey@shestakovyachtsales.com

Web: shestakovyachtsales.com/en/

Telephones

USA: +1(954)274-4435

Office hours

Monday – Saturday: **9:00 - 21:00** EDT

Sunday: **closed**

Address



Harbour Towne Marina, 850 NE 3rd St,
STE 213, Dania, FL 33004