

## NEW MOON — MANTA



**Builder:** MANTA

**Year Built:** 2004

**Model:** Catamaran

**Price:** PRICE ON APPLICATION

**Location:** United States

**LOA:** 42' 0" (12.80m)

**Beam:** 21' 0" (6.40m)

**Max Draft:** 3' 8" (1.12m)

Our experienced yacht broker, Andrey Shestakov, will help you choose and buy a yacht that best suits your needs **New Moon — MANTA** from our catalogue. Presently, at Shestakov Yacht Sales Inc., we have a wide variety of yachts available on our sale's list. We also work in close contact with all the big yacht manufacturers from all over the world.

If you would like to buy a yacht **New Moon — MANTA** or would like help answering any questions concerning purchasing, selling or chartering a yacht, please call **+1(954)274-4435**

---

# TABLE OF CONTENTS

---

TABLE OF CONTENTS	2
SPECIFICATIONS	3
Overview	3
Basic Information	4
Dimensions	5
Speed, Capacities and Weight	5
Accommodations	5
Hull and Deck Information	5
Engine Information	5
PHOTOS	6
CONTACTS	10
Contact details	10
Telephones	10
Office hours	10
Address	10

# SPECIFICATIONS

## Overview

New Moon is a clean, well maintained, updated, well equipped example of the highly sought after Manta 42 MK II catamaran, in sail away condition. The yacht is outfitted for extensive cruising, beyond the factory upgrades. Some of the most prominent upgrades include:

- Icom SSB, TrackVision satellite antenna, and life raft
- 300 gpd Spectra water maker
- New sails: jib less than 1 year old, main less than 2 years old.
- Standing rigging upgraded 1 year ago, per recommended maintenance schedule.
- New 3 blade folding props and hubs, port and starboard, 6 months ago.
- AB 10.5 dingy with 15hp Yamaha motor

The yacht was last hauled and serviced in June 2014, including premium bottom paint, saildrive maintenance, generator maintenance, and extensive preventative maintenance on all systems. This is a clean MK II, ready for the Bahamas and beyond.

New Moon is now at our dock in Ft. Myers Florida, and ready to show. **Boat Name** New Moon  
**Specs** Builder: Manta Catamarans Designer: Manta Enterprises Flag of Registry: United States  
 Keel: Fin Hull Shape: Catamaran **Dimensions** LOA: 41 ft 8 in Beam: 21 ft 0 in LWL: 39 ft 10 in  
 Maximum Draft: 3 ft 8 in Displacement: 21000 lbs Full Load Bridge Clearance: 60 ft 0 in  
 Headroom: 6 ft 4 in Dry Weight: 18500 lbs **Engines** Engine 1: Engine Brand: Volvo Year Built:  
 2004 Engine Model: MD2030 Engine Type: Inboard Engine/Fuel Type: Diesel Location:  
 Starboard Engine Hours: 2601 Propeller: Folding propeller Drive Type: Sail drive Engine Power:  
 30 HP Engine 2: Engine Brand: Volvo Year Built: 2004 Engine Model: MD2030 Engine Type:  
 Inboard Engine/Fuel Type: Diesel Location: Port Engine Hours: 2581 Propeller: Folding  
 propeller Drive Type: Sail drive Engine Power: 30 HP **Tanks** Fresh Water Tanks: 1 (100  
 Gallons) Fuel Tanks: 1 (120 Gallons) Holding Tanks: 2 Plastic (20 Gallons) **Accommodations**  
 Number of single berths: 1 Number of double berths: 2 Number of cabins: 3 Number of heads: 2  
**Electronics** Depthsounder Wind speed and direction Autopilot Compass CD player TV set Log-  
 speedometer GPS Repeater(s) Radar - 4 kw Raymarine Cockpit speakers DVD player VHF  
 Plotter Radio **Sails** Storm jib Genoa - 100% North premium full batten with camber spar, self  
 tacking Fully battened mainsail - North Sails, premium with Harken ball bearing mast track  
 system and triple offshore reef system, North stack pack Asymmetric spinnaker - 1 G-0 with sock,  
 bridle system for offsetting tack **Rigging** Steering wheel Electric winch - Harken 42 two speed  
 handles all lines at the helm **Inside Equipment** Heating - Dometic reverse cycle Manual bilge  
 pump Microwave oven Electric bilge pump Deep freezer - 4 cu. ft. Battery charger - 100 amp Hot  
 water - Isotemp 11 gal engine/electric Electric head - Jabsco Quiet Flush Air conditioning -  
 Dometic 16k btu front, 12k btu aft Washing machine - Splendide washer/dryer Fresh water maker  
 - Sea Recovery 300 gpd with UV treatment and remote at instrument panel Refrigerator - 6 cu. ft.  
 Sea water pump - washdown tap at anchor windlass Oven - Force 10 three burner with oven  
**Electrical Equipment** Inverter - 2000 W Shore power inlet - 2 x 30 Amp Generator - NextGen 5.5

in frp sound shield Electrical Circuit: 110V **Outside Equipment/Extras** Davits Liferaft - 6 person Cockpit cushions Solar panel - 450 watts, Blue Sea charger controller with instrument panel remote Tender - 10.5 AB with 15 hp Yamaha Swimming ladder - 3 step telescoping both sterns Cockpit shower Cockpit table Total Liferaft Capacity: 6 Electric windlass **Covers** Mainsail cover Cockpit cover Lazy bag Spray hood Lazyjacks Genoa cover

## Sails and Rigging

New North Sails OEM MK IV version jib installed in spring 2014, Doyle MK II version mainsail in fall 2012.

IJPE : 693.00 sq ft I : 43.42 ft J : 14.92 ft P : 45.42 ft E : 16.25 ft Working Sail Area : 833.00 sq ft

Standing rigging replaced 2012.

One North asymmetric spinnaker: G-0 for excellent reaching performance.

## Anchor Tackle

Ground Tackle:

Primary - Delta 45 lb with 275 ft chain in very good condition, on Maxwell VWC1500 electric windlass.

Secondary - Fortress FX23 with 300 ft. 5/8 rode.

**Manufacturer Provided Description** The Manta 42 MkII incorporates features developed from owner feedback with thousands of ocean miles sailed over the past eight years. Each Manta is built to order, and offers the best quality/value ratio of any production catamaran in the world today.

## Basic Information

---

**Category:** Catamaran

**Model Year:** 2004

**Year Built:** 2004

**Country:** United States

---

## Dimensions

---

**LOA:** 42' 0" (12.80m)

**LWL:** 39' 10" (12.14m)

**Beam:** 21' 0" (6.40m)

**Max Draft:** 3' 8" (1.12m)

**Clearance:** 60' 0" (18.29m)

---

## Speed, Capacities and Weight

---

**Displacement:** 21000 Pounds

**Water Capacity:** 100 Gallons

**Holding Tank:** 20 Gallons

**Fuel Capacity:** 120 Gallons

---

## Accommodations

---

**Total Cabins:** 3

---

## Hull and Deck Information

---

**Hull Material:** Fiberglass

---

## Engine Information

---

**Engines:** 2

**Manufacturer:** Volvo

**Model:** MD2030

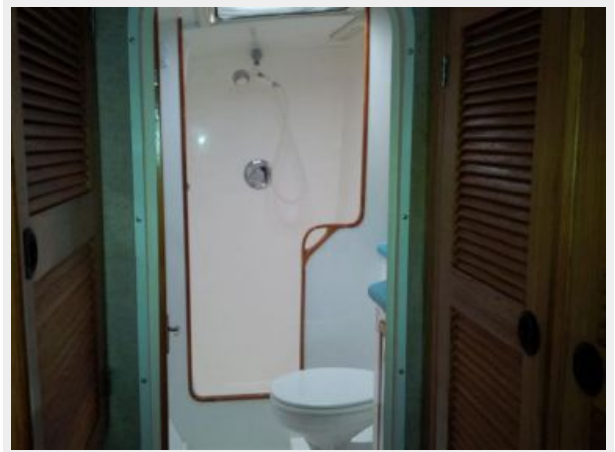
**Engine Type:** Inboard

**Fuel Type:** Diesel

# PHOTOS











# CONTACTS

---

Andrey Shestakov, leading yacht broker of the sales department of Shestakov Yacht Sales Inc. Shestakov Yacht Sales Inc., the official representative of the Miami/Fort Lauderdale FL headquarters.

## Contact details

---

Email: [andrey@shestakovyachtsales.com](mailto:andrey@shestakovyachtsales.com)

Web: [shestakovyachtsales.com/en/](http://shestakovyachtsales.com/en/)

## Telephones

---

USA: +1(954)274-4435

## Office hours

---

Monday – Saturday: **9:00 - 21:00** EDT

Sunday: **closed**

## Address

---



Harbour Towne Marina, 850 NE 3rd St,  
STE 213, Dania, FL 33004