

## MY DARLINGS — MARIN LUXUR YACHTS



**Builder:** MARIN LUXUR YACHTS

**Year Built:** 2014

**Model:** Motor Yacht

**Price:** PRICE ON APPLICATION

**Location:** Greece

**LOA:** 131' 3" (40.00m)

**Beam:** 26' 3" (8.00m)

**Max Draft:** 7' 5" (2.25m)

**Cruise Speed:** 12 Kts. (14 MPH)

**Max Speed:** 14 Kts. (16 MPH)

Our experienced yacht broker, Andrey Shestakov, will help you choose and buy a yacht that best suits your needs **MY DARLINGS — MARIN LUXUR YACHTS** from our catalogue. Presently, at Shestakov Yacht Sales Inc., we have a wide variety of yachts available on our sale's list. We also work in close contact with all the big yacht manufacturers from all over the world.

If you would like to buy a yacht **MY DARLINGS — MARIN LUXUR YACHTS** or would like help answering any questions concerning purchasing, selling or chartering a yacht, please call **+1(954)274-4435**

---

# TABLE OF CONTENTS

---

TABLE OF CONTENTS	2
SPECIFICATIONS	3
Overview	3
Basic Information	3
Dimensions	3
Speed, Capacities and Weight	3
Accommodations	4
Hull and Deck Information	4
Engine Information	4
DETAILED INFORMATION	5
Remarks	5
Boat Highlights	5
Exclusions	6
Disclaimer	6
PHOTOS	7
CONTACTS	13
Contact details	13
Telephones	13
Office hours	13
Address	13

---

# SPECIFICATIONS

---

## Overview

---

**Steel Hull, Aluminum Superstructure. NEW PRICE REDUCTION -- OWNER IS KEEN TO SELL OWNER WILL CONSIDER TRADES WITH YACHTS FROM 32m - 60m. ALSO OPEN TO TRADES WITH PROPERTIES IN MIAMI, NY, DUBAI, IBIZA, LONDON, PARIS, ATHENS.**

## Basic Information

---

**Category:** Motor Yacht

**Sub Category:** Displacement

**Model Year:** 2014

**Year Built:** 2014

**Refit Year:** 2014

**Refit Type:** Interior & Exterior redesign

**Country:** Greece

**Vessel Top:** 2363

**Fly Bridge:** Yes

**Cockpit:** Yes

## Dimensions

---

**LOA:** 131' 3" (40.00m)

**LWL:** 111' 11" (34.10m)

**Beam:** 26' 3" (8.00m)

**Max Draft:** 7' 5" (2.25m)

## Speed, Capacities and Weight

---

**Cruise Speed:** 12 Kts. (14 MPH)

**Cruise Speed Range:** 4750

**Max Speed:** 14 Kts. (16 MPH)

**Gross Tonnage:** 280 Pounds

**Water Capacity:** 2509.634494 Gallons

**Holding Tank:** 607.5957196 Gallons

**Fuel Capacity:** 6099.996852732 Gallons

---

## Accommodations

---

**Total Cabins:** 5

**Total Berths:** 5

**Sleeps:** 10

**Total Heads:** 12

**Captain Cabin:** True

**Crew Cabin:** 7

**Crew Sleeps:** 8

---

## Hull and Deck Information

---

**Hull Material:** Steel

**Hull Configuration:** Full Displacement

**Hull Designer:** Inigo Echenique - Acubens

**Exterior Designer:** GIORGIO VAFIADIS

**Interior Designer:** Eduardo Campoamor

---

## Engine Information

---

**Engines:** 2

**Manufacturer:** MAN

**Model:** D 2842 LE413

**Engine Type:** Inboard

**Fuel Type:** Diesel

## DETAILED INFORMATION

### Remarks

**ABOUT THE BUILDER & DESIGNER** Built by **FACTORIA NAVAL MARIN (FNM)** and designed by world renowned Naval Architect **GIORGIO VAFIADIS**. Towards the end of 2006, the Galician industrialist Pablo Comesana led an operation to purchase two historical shipyards of the Nogueira group in Marin, now united under the name Factoria Naval Marin (FNM). From the first moment, the initiative also had the participation of Caixa Galicia and the investor Jose Maria Suescun, supports that highlight the economic solvency, stability and reliability of the new company. The new management team presented an ambitious plan to reform the installations from top to bottom and turn them into one of the most modern shipyards in Europe, with capacity to build state of the art and highly complex ships, as well as having an exclusive area for the nautical division dedicated to top quality megayachts of over one hundred meters length. FNM was founded at the end of 2006. The shipyard which employs more than 500 people, is able to build ships up to 150m in length and 21m beam. In addition to its two traditional slips, a third slip has been especially designed to work in dry dock mode by means of a lock. Slipnumber 4, a state of the art engineering design, is covered and connected to a building 140m long, where the large yachts are built; projects of enormous technical complexity and requiring the maximum in comfortable working conditions. The shipyard has a 1,350 squaremeter office building and a series of other installations such as warehouses, workshops and storerooms. Elevation equipment consists of 10 cranes: 5 conventional lifting up to 30 tons and 5 gantry cranes with the same lifting capacity. The shipyard occupies a total area of 36,000 sq.m, as well as another 15,000 sq.m dedicated to building blocks. FNM has invested 12 million euros in the first phase of the modernization of the shipyard. Maximum dry-docking capacity is up to 3.500 tons displacement, max ship length 85 mtrs and no more than 19 meters in breadth. FNM has delivered: 55mt Schooner GERMANIA NOVA, 55mt Schooner ELENA, 45mt Motor Yacht FOLLOW ME V, 50mt & 59mt projects underway. World-renowned Naval Architect **GIORGIO VAFIADIS** has collaborated in very important and award winning projects like: • Mangusta 130 motor yacht Hull #18 • Mondo Marine Yacht OKKO announced as finalist in the World Superyacht Awards 2013 • New 67m motor yacht CBI 675 concept by Cbi Navi – FIPA GROUP and Architect Giorgio Vafiadis • Mondo Marine superyacht OKKO designed by Giorgio Vafiadis • AB Yachts 140' Sport Yacht MY TOY (ex Maria Pia) • Four wonderful Golden Yachts O'Mega, O'Pati, O'Neiro and O'Rama • 50m Alexander Again Superyacht by Mondo Marine • 49m Motor yacht Zaliv III delivered by Mondo Marine

### Boat Highlights

**SPECS** Length Over All: 39.60m Beam: 8.00m Maximum Draft: 2.25m Hull Material: Steel Superstructure: Aluminum Interior Design: Mr. Eduardo Campoamor Yard No: Y101 Class: Lloyd's +100 A! SSC YACHT MONO G6 MCH/MCA LY2 Accommodation: 5 Cabins Max Speed: 14 knots Cruise Speed: 12 knots Range: 4,750 nm Engines: 2 x MAN D-2842 , 2 x 735 KW at 2,100 rpm Gearboxes: 2 x ZF 2200 Propellers: 2 x 5 blades fixed pitch Bow Thruster: NV 70kw

Stern Thruster: NV 50 kw Stabilizers: 2 x Wesmar Generators: 2 x Kohler 70EFOZD 68KW Fuel Tank: 61,000 lt Fresh Water 9,500 lt A/C: Candaria (300,000 BTU) Water maker: 2 x Aquamar 5,400 lt/day per unit

**Naval Marin - FNM (Marin Luxuryachts) A General Description of Motor Yacht Y0101** From the Factoria Naval Marin - Fnm (Marin Luxuryachts) shipyard in Spain the Y0101 is 40 m 130 (ft) in length. Christened in 2009 the comparatively recent interior design reflects the futurist milieu of owner and Eduardo Campoamor. Superyacht Y0101 is able to accommodate up to 10 guests with 8 professional crew. The old, former or build project names were (Fnm Y0101). She can attain a maximum speed of 13.5 knots. **Building & Yacht Design of Luxury Yacht Y0101** Inigo Echenique - Acubens was the naval architect involved in the formal vessel design work for Y0101. Also the company Inigo Echenique - Acubens skillfully collaborated on this venture. Interior designer Eduardo Campoamor was commissioned for the creative interior styling. Spain is the country that Factoria Naval Marin - FNM (Marin Luxuryachts) completed their new build motor yacht in. After her formal launch in 2009 in Marin the boat was delivered on to the owner after sea trials and testing. Her core hull was built out of steel. The motor yacht superstructure component is made for the most part using aluminum. With a width of 8 meters or 26.25 feet Y0101 has fairly large internal space. A fairly shallow draught of 2.3m (7.55ft) selects the number of worldwide ports she can visit, contingent on their particular depth at low tide. **Engineering And The Cruise Speed That M/Y Y0101 is Able To Achieve:** The D2842 LE413 engine installed in the motor yacht is produced by MAN. Y0101 is propelled by twin screw propellers. The main engine of the ship gives 1000 horse power (or 746 kilowatts). She is equipped with 2 engines. The combined power for the boat is 2000 HP or 1492 KW. As far as stabilizers are concerned she uses Wesmar / Sis Stabtech Systems Static Zero Speed. **On board Superyacht Y0101 There is The Following Guest Accommodation Capacity For:** Providing space for a maximum of 10 yacht guests staying on board, the Y0101 accommodates them luxuriously. This ship carries approximately 8 capable crew members to operate. **A List of the Specifications of the Y0101:** Superyacht Name: Motor Yacht Y0101 Ex: (Fnm Y0101) - Built By: Factoria Naval Marin - FNM (Marin LuxurYachts) - Built in: Marin, Spanish - Launched in: 2009 - Refitted in:2014 - Length Overall: 39.6 metres / 129.92 feet - Waterline Length: Naval Architecture: Inigo Echenique - Acubens, Inigo Echenique - Acubens - Designers

## Exclusions

---

Owner's personal belongings.

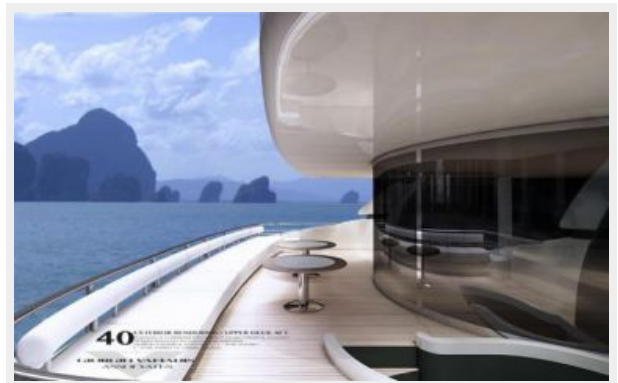
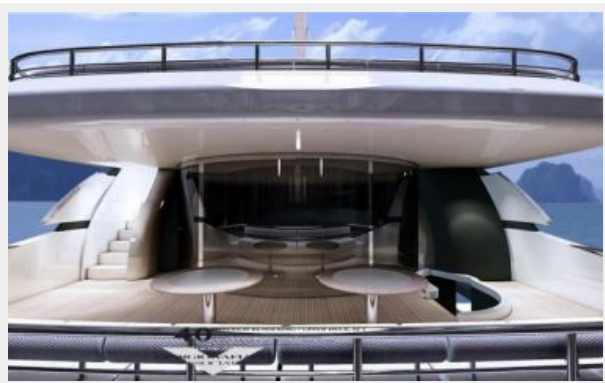
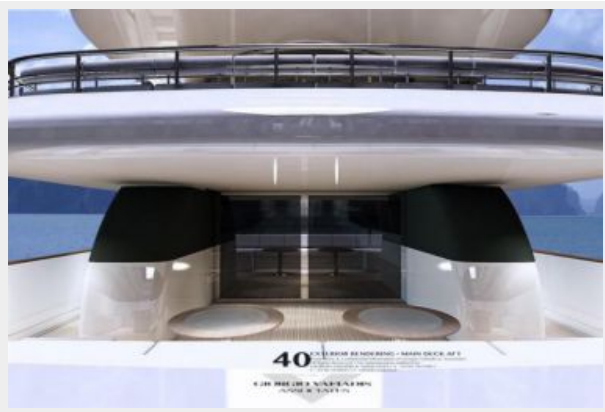
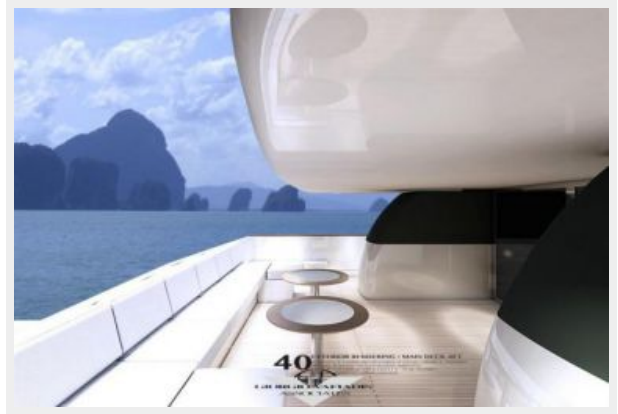
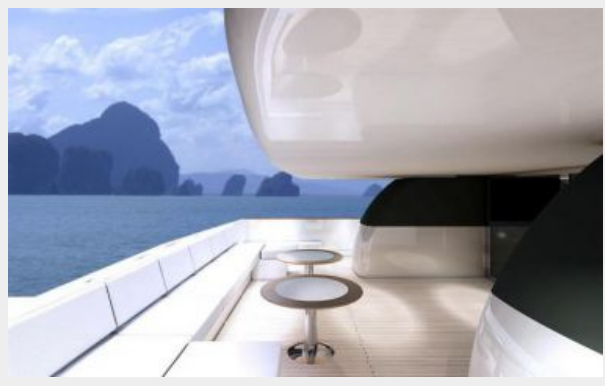
## Disclaimer

---

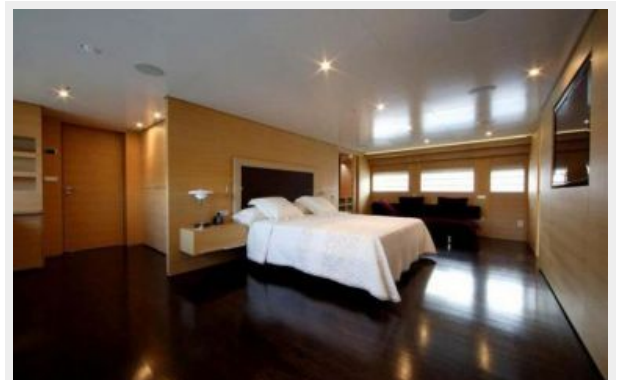
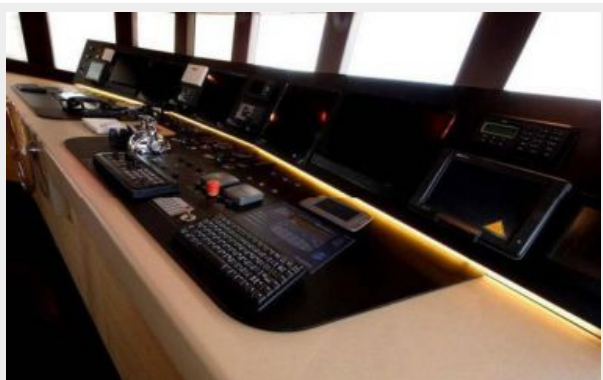
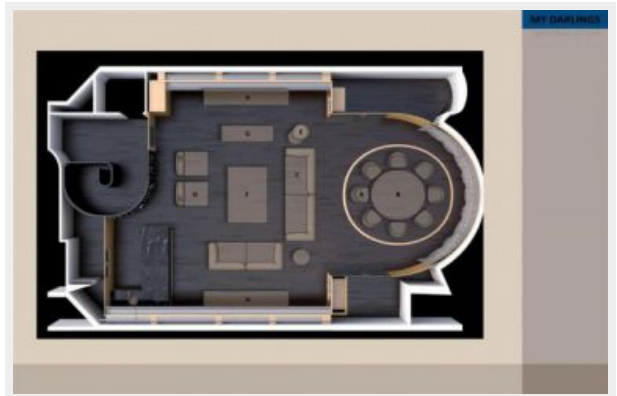
The Company offers the details of this vessel or yacht in good faith but cannot guarantee or warrant the accuracy of this information nor warrant the condition of the vessel. A buyer should instruct his representatives, agents, or his surveyors, to investigate such details as the buyer desires validated. This vessel or yacht is offered subject to prior sale, price change, or withdrawal without notice.

# PHOTOS















# CONTACTS

---

Andrey Shestakov, leading yacht broker of the sales department of Shestakov Yacht Sales Inc. Shestakov Yacht Sales Inc., the official representative of the Miami/Fort Lauderdale FL headquarters.

## Contact details

---

Email: [andrey@shestakovyachtsales.com](mailto:andrey@shestakovyachtsales.com)

Web: [shestakovyachtsales.com/en/](http://shestakovyachtsales.com/en/)

## Telephones

---

USA: +1(954)274-4435

## Office hours

---

Monday – Saturday: **9:00 - 21:00** EDT

Sunday: **closed**

## Address

---



Harbour Towne Marina, 850 NE 3rd St,  
STE 213, Dania, FL 33004