

MY DARLINGS — MARIN LUXUR YACHTS



Судостроитель:
MARIN LUXUR YACHTS

Год постройки: 2014

Модель: Моторная яхта

Цена: **ЦЕНА ЯХТЫ ПО ЗАПРОСУ**

Местонахождение: Greece

Длина общая: 131' 3" (40.00m)

Ширина: 26' 3" (8.00m)

Макс. осадка: 7' 5" (2.25m)

Крейс. скорость: 12 Kts. (14 MPH)

Макс. скорость: 14 Kts. (16 MPH)

Купить **MY DARLINGS — MARIN LUXUR YACHTS** а также выбрать подходящую вам яхту из нашего каталога яхт вам поможет опытный яхтенный брокер Андрей Шестаков. На сегодняшний день компания **Shestakov Yacht Sales Inc.** имеет большое количество яхт в собственном списке продаж, а также тесно сотрудничает со всеми крупными яхтенными производителями по всему миру. Для того чтобы купить яхту **MY DARLINGS — MARIN LUXUR YACHTS** а также проконсультироваться по любому вопросу связанному с покупкой, продажей, чартером яхт позвоните по телефону **+7(918)465-66-44**.

ОГЛАВЛЕНИЕ

ОГЛАВЛЕНИЕ	2
ХАРАКТЕРИСТИКИ	3
Обзор	3
Основная информация	3
Размеры	3
Скорость, вместимость и масса	3
Размещение	4
Корпус и палуба	4
Информация о двигателе	4
ПОДРОБНОЕ ОПИСАНИЕ	5
Remarks	5
Boat Highlights	5
Исключения	6
Отказ от ответственности	6
ФОТОГРАФИИ	7
КОНТАКТЫ	13
Контактная информация	13
Телефоны	13
Время работы	13
Адрес	13

ХАРАКТЕРИСТИКИ

Обзор

Steel Hull, Aluminum Superstructure. NEW PRICE REDUCTION -- OWNER IS KEEN TO SELL OWNER WILL CONSIDER TRADES WITH YACHTS FROM 32m - 60m. ALSO OPEN TO TRADES WITH PROPERTIES IN MIAMI, NY, DUBAI, IBIZA, LONDON, PARIS, ATHENS.

Основная информация

Тип судна: Моторная яхта	Подкатегория: Водоизмещение
Модельный год: 2014	Год постройки: 2014
Год обновления: 2014	Вид обновления: Interior & Exterior redesign
Страна: Greece	Верх: 2363
Открытая палуба мостика: Да	Кубрик: Да

Размеры

Длина общая: 131' 3" (40.00m)	Длина по ватерлинии: 111' 11" (34.10m)
Ширина: 26' 3" (8.00m)	Макс. осадка: 7' 5" (2.25m)

Скорость, вместимость и масса

Крейс. скорость: 12 Kts. (14 MPH)	Дальность на крейсерской скорости: 4750
Макс. скорость: 14 Kts. (16 MPH)	Чистый вес: 280 Pounds
Вместимость воды: 2509.634494 Gallons	Вместимость сточного бака: 607.5957196 Gallons
Объем топливного бака: 6099.996852732 Gallons	

Размещение

Всего кают: 5

Всего коек: 5

Спальные места: 10

Всего ком. состава: 12

Каюта капитана: Да

Каюты экипажа: 7

Спальных мест экипажа: 8

Корпус и палуба

Материал корпуса: Steel

Комплектация корпуса: Full
Displacement

Дизайнер корпуса: Inigo Echenique -
Acubens

Дизайнер экстерьера: GIORGIO
VAFIADIS

Дизайнер интерьера: Eduardo
Campanor

Информация о двигателе

Двигатели: 2

Производитель: MAN

Модель: D 2842 LE413

Тип двигателя: Inboard

Тип топлива: Diesel

ПОДРОБНОЕ ОПИСАНИЕ

Remarks

ABOUT THE BUILDER & DESIGNER Built by **FACTORIA NAVAL MARIN (FNM)** and designed by world renowned Naval Architect **GIORGIO VAFIADIS**. Towards the end of 2006, the Galician industrialist Pablo Comesana led an operation to purchase two historical shipyards of the Nogueira group in Marin, now united under the name Factoria Naval Marin (FNM). From the first moment, the initiative also had the participation of Caixa Galicia and the investor Jose Maria Suescun, supports that highlight the economic solvency, stability and reliability of the new company. The new management team presented an ambitious plan to reform the installations from top to bottom and turn them into one of the most modern shipyards in Europe, with capacity to build state of the art and highly complex ships, as well as having an exclusive area for the nautical division dedicated to top quality megayachts of over one hundred meters length. FNM was founded at the end of 2006. The shipyard which employs more than 500 people, is able to build ships up to 150m in length and 21m beam. In addition to its two traditional slips, a third slip has been especially designed to work in dry dock mode by means of a lock. Slipnumber 4, a state of the art engineering design, is covered and connected to a building 140m long, where the large yachts are built; projects of enormous technical complexity and requiring the maximum in comfortable working conditions. The shipyard has a 1,350 squaremeter office building and a series of other installations such as warehouses, workshops and storerooms. Elevation equipment consists of 10 cranes: 5 conventional lifting up to 30 tons and 5 gantry cranes with the same lifting capacity. The shipyard occupies a total area of 36,000 sq.m, as well as another 15,000 sq.m dedicated to building blocks. FNM has invested 12 million euros in the first phase of the modernization of the shipyard. Maximum dry-docking capacity is up to 3.500 tons displacement, max ship length 85 mtrs and no more than 19 meters in breadth. FNM has delivered: 55mt Schooner GERMANIA NOVA, 55mt Schooner ELENA, 45mt Motor Yacht FOLLOW ME V, 50mt & 59mt projects underway. World-renowned Naval Architect **GIORGIO VAFIADIS** has collaborated in very important and award winning projects like: • Mangusta 130 motor yacht Hull #18 • Mondo Marine Yacht OKKO announced as finalist in the World Superyacht Awards 2013 • New 67m motor yacht CBI 675 concept by Cbi Navi – FIPA GROUP and Architect Giorgio Vafiadis • Mondo Marine superyacht OKKO designed by Giorgio Vafiadis • AB Yachts 140' Sport Yacht MY TOY (ex Maria Pia) • Four wonderful Golden Yachts O'Mega, O'Pati, O'Neiro and O'Rama • 50m Alexander Again Superyacht by Mondo Marine • 49m Motor yacht Zaliv III delivered by Mondo Marine

Boat Highlights

SPECS Length Over All: 39.60m Beam: 8.00m Maximum Draft: 2.25m Hull Material: Steel Superstructure: Aluminum Interior Design: Mr. Eduardo Campoamor Yard No: Y101 Class: Lloyd's +100 A! SSC YACHT MONO G6 MCH/MCA LY2 Accommodation: 5 Cabins Max Speed: 14 knots Cruise Speed: 12 knots Range: 4,750 nm Engines: 2 x MAN D-2842 , 2 x 735 KW at 2,100 rpm Gearboxes: 2 x ZF 2200 Propellers: 2 x 5 blades fixed pitch Bow Thruster: NV 70kw

Stern Thruster: NV 50 kw Stabilizers: 2 x Wesmar Generators: 2 x Kohler 70EFOZD 68KW Fuel Tank: 61,000 lt Fresh Water 9,500 lt A/C: Candaria (300,000 BTU) Water maker: 2 x Aquamar 5,400 lt/day per unit

Naval Marin - FNM (Marin Luxuryachts) A General Description of Motor Yacht Y0101 From the Factoria Naval Marin - Fnm (Marin Luxuryachts) shipyard in Spain the Y0101 is 40 m 130 (ft) in length. Christened in 2009 the comparatively recent interior design reflects the futurist milieu of owner and Eduardo Campoamor. Superyacht Y0101 is able to accommodate up to 10 guests with 8 professional crew. The old, former or build project names were (Fnm Y0101). She can attain a maximum speed of 13.5 knots.

Building & Yacht Design of Luxury Yacht Y0101 Inigo Echenique - Acubens was the naval architect involved in the formal vessel design work for Y0101. Also the company Inigo Echenique - Acubens skillfully collaborated on this venture. Interior designer Eduardo Campoamor was commissioned for the creative interior styling. Spain is the country that Factoria Naval Marin - FNM (Marin Luxuryachts) completed their new build motor yacht in. After her formal launch in 2009 in Marin the boat was delivered on to the owner after sea trials and testing. Her core hull was built out of steel. The motor yacht superstructure component is made for the most part using aluminum. With a width of 8 meters or 26.25 feet Y0101 has fairly large internal space. A fairly shallow draught of 2.3m (7.55ft) selects the number of worldwide ports she can visit, contingent on their particular depth at low tide.

Engineering And The Cruise Speed That M/Y Y0101 is Able To Achieve: The D2842 LE413 engine installed in the motor yacht is produced by MAN. Y0101 is propelled by twin screw propellers. The main engine of the ship gives 1000 horse power (or 746 kilowatts). She is equipped with 2 engines. The combined power for the boat is 2000 HP or 1492 KW. As far as stabilizers are concerned she uses Wesmar / Sis Stabtech Systems Static Zero Speed.

On board Superyacht Y0101 There is The Following Guest Accommodation Capacity For: Providing space for a maximum of 10 yacht guests staying on board, the Y0101 accommodates them luxuriously. This ship carries approximately 8 capable crew members to operate.

A List of the Specifications of the Y0101: Superyacht Name: Motor Yacht Y0101 Ex: (Fnm Y0101) - Built By: Factoria Naval Marin - FNM (Marin LuxurYachts) - Built in: Marin, Spanish - Launched in: 2009 - Refitted in:2014 - Length Overall: 39.6 metres / 129.92 feet - Waterline Length: Naval Architecture: Inigo Echenique - Acubens, Inigo Echenique - Acubens - Designers

Исключения

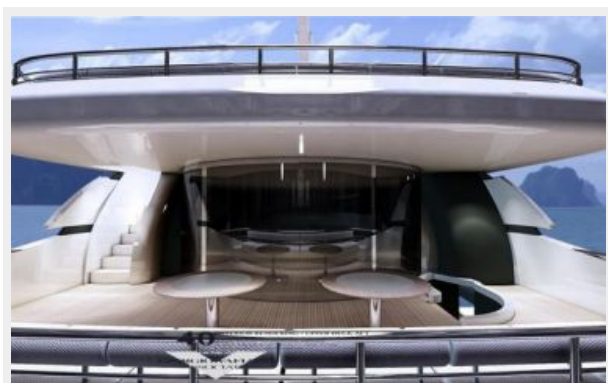
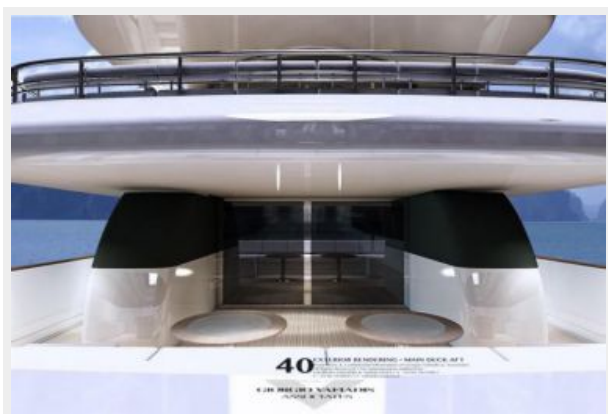
При продаже яхты исключаются личные вещи владельца.

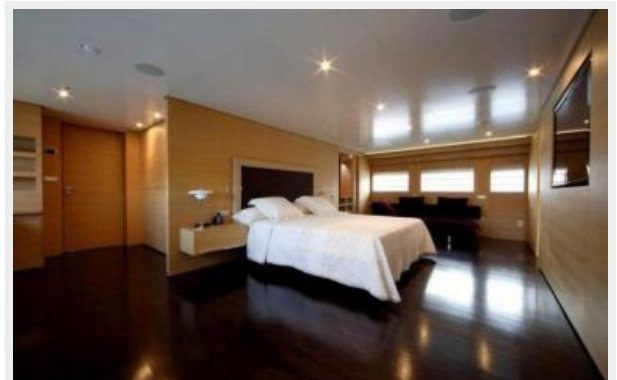
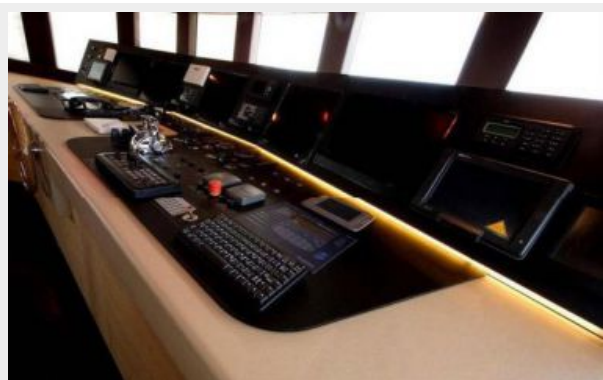
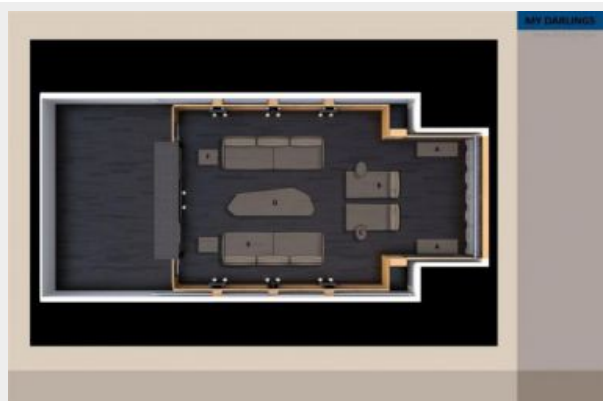
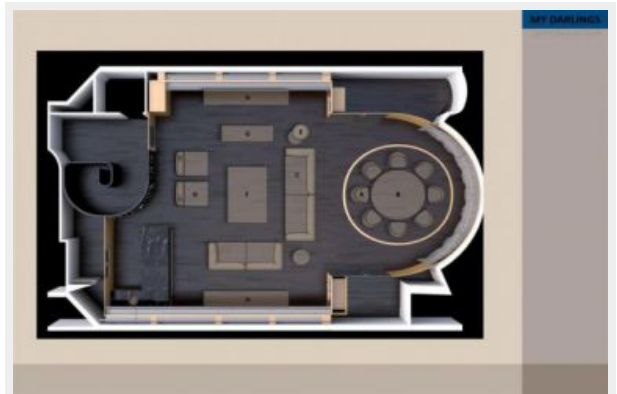
Отказ от ответственности

Компания предоставляет описание судна или яхты добросовестно, но не может гарантировать точность этой информации, а также не ручается за техническое состояние. Покупатель должен проинструктировать своих агентов или оценщиков исследовать представленную информацию более подробно, по собственному желанию. Продажа судна или яхты, изменение цены или снятие с продажи будет происходить без предварительного уведомления.

ФОТОГРАФИИ













КОНТАКТЫ

Андрей Шестаков (Andrey Shestakov) – ведущий яхтенный брокер отдела продаж яхт и судов компании Shestakov Yacht Sales Inc. Официальный представитель Shestakov Yacht Sales Inc. для русскоговорящих клиентов в центральном офисе компании в Майами/Форт Лодердейл/Флорида/США.

Контактная информация

Email: andrey@shestakovyachtsales.com

Web: shestakovyachtsales.com

Телефоны

Краснодарский край: **+7(918)465-66-44**

США, Майами, Флорида: **+1(954)274-4435**

Время работы

Понедельник – Суббота: **9:00 - 21:00**
EDT

Воскресенье: **Закрыто**

Адрес



Harbour Towne Marina, 850 NE 3rd St,
STE 213, Dania, FL 33004