

BELUGA — TIMMERMAN YACHTS



Builder: TIMMERMAN YACHTS

Year Built: 2014

Model: Motor Yacht

Price: PRICE ON APPLICATION

Location: France

LOA: 146' 8" (44.70m)

Beam: 29' 10" (9.08m)

Min Draft: 9' 5" (2.85m)

Cruise Speed: 10 Kts. (12 MPH)

Max Speed: 14 Kts. (16 MPH)

Our experienced yacht broker, Andrey Shestakov, will help you choose and buy a yacht that best suits your needs **Beluga — TIMMERMAN YACHTS** from our catalogue. Presently, at Shestakov Yacht Sales Inc., we have a wide variety of yachts available on our sale's list. We also work in close contact with all the big yacht manufacturers from all over the world.

If you would like to buy a yacht **Beluga — TIMMERMAN YACHTS** or would like help answering any questions concerning purchasing, selling or chartering a yacht, please call **+1(954)274-4435**

TABLE OF CONTENTS

TABLE OF CONTENTS	2
SPECIFICATIONS	3
Overview	3
Basic Information	6
Dimensions	6
Speed, Capacities and Weight	6
Accommodations	6
Hull and Deck Information	7
Engine Information	7
DETAILED INFORMATION	8
Detailed Information	8
Exclusions	10
Disclaimer	10
PHOTOS	12
CONTACTS	19
Contact details	19
Telephones	19
Office hours	19
Address	19

SPECIFICATIONS

Overview

This is the 8th yacht built at the shipyard. Built to comply with world standards approved in the yacht building industry. It was contributed also by the fact that the Customer took the direct participation in the creation of the renewed project. Much attention was paid to different details and peculiarities, due to which the Owner's and guests' stay at the yacht will be comfortable to the maximum.

All components and elements of the yacht pertain to the higher segment of the world producers of the yacht equipment. Russian craftsmen worked over the hull and superstructure formation. The whole construction process was controlled by the equipment, Class and Flag suppliers.

45-meters yacht Beluga – is the maximum space application, both in technical and comfort terms. The deck layout of the ship is carefully designed, and the rational use of the deck provides for the additional comfort. The yacht is equipped with the high-spec class equipment.

One more peculiarity of TM-45 – is spacious deck areas. The sundeck has a lot of open space, with two large sofas for sunbathing. A large Jacuzzi can admit up to six persons, and the bar with onyx surface has a grill. The sundeck is also equipped with sun-protecting canvases produced by Multiplex (Germany) that creates the saving shadow over the bar and Jacuzzi.

Two dining zones are provided at the yacht: in the cabin of the main deck and in the open aft of the upper deck. The exterior dining zone is protected from wind, sun and prying eyes with sliding windows with blinds.

The best sort of leather produced in Italy is used in the interior, including certified skin of elephants, rare and valuable wood. Onyx was preferred for marble surfaces.

The yacht is completed with 6-meters tender Novurania Equator 600 LP and jet boat Yamaha VXS. All lux premises are equipped with AB equipment of the higher quality segment. Two satellite antennas are installed on the mast to receive TV and Internet.

The video surveillance system is installed in the yacht; it enables preventing unauthorized trespassing.

The yacht is designed for sea passages in any weather conditions, that is why it possesses both aesthetic view and excellent technical properties. The ship was built in accordance with DNV and MCA requirements and, thus, ideally suits charter voyages.

Undeniable advantages of TM-45 project are shown below with regard to standard yachts 45 meters long (up to 500GT):

- the availability of the full-fledged sauna with a comfortable access to the swimming platform
- a unique interior with a large number of lacquered surfaces made of wenge, Mexican

rosewood, surfaces of sanitary facilities are covered with onyx and decorated with borders made of semi-precious stones.

- LED lamps are used in the yacht premises, as well as dimming switches that allows reducing the load on the diesel generator and mitigate the heat loss in cabins.
- all audio/video equipment in cabins/saloons and in open decks is compatible and can be operated by Ipod.
- Baxter handles were used for doors, cabinets.
- light-reflecting blinds are installed in cabins; they remove bright sunshine but do not prevent enjoying the view from the window.
- the yacht deck layout is thought over in details: the routes of the crew and guests do not intercross. There is a food elevator for the servicing of guests in the sundeck and upper deck
- the lower deck has two big VIP cabins for guests
- the crew has its own galley and a large saloon for recreation
- opening illuminators are installed in the master cabins. Windows are made of the bullet-proof glass (Netherlands)
- the lower deck cabins have large illuminators (the maximum allowable size for such yacht class)
- the refrigerating technique includes: . full-size refrigerating room Porrka, 1 full-size home freezer and 3 full-size refrigerators in the galley, 1 full-size refrigerator in the upper saloon for the Owner's quick access, a wine refrigerator in the upper saloon and a freezing chamber for garbage, ice generators at every deck
- the yacht garage has a glass roof providing natural lighting
- the yacht is equipped with GSM signal amplifier enabling the comfort conversation by a cellular phone in any ship room.
- 10 pcs of underwater lamps are installed in the yacht aft
- the yacht is fully equipped by both the supply and the crew
- due to the reinforced insulation yacht far exceeds all the requirements for noise prevention and vibration while engines, generators and hydraulic system running
- the yacht building was controlled by Moran Yachts Company (general performance quality)

Mechanical Equipment

Exhaust system	Marquip
Gross line	Amartech
Steering apparatus	Jastram Engineering Ltd.
Rolling stabilizers	Quantum
Thruster	Van der Velden

Hydraulic system	Quantum
Electric system and electric equipment	Imtech
Monitoring and signaling system	Imtech
Navigation and radio-communication equipment	Furuno
Cranes	Opacmare
Stern and side ladder	Opacmare
Anchor and mooring equipment	Muir
Ventilation and air conditioning system	H&H
Noise and vibration insulation system	Van Cappellen
Jacuzzi	Hoesch COLORADO, 2 cum
Engine hours: port/starboard	718 / 717
Generators hours: port/starboard	1024 / 1024
TENDER	Novurania Equator 600LP 6.01 meters

Basic Information

Category: Motor Yacht

Model Year: 2007

Year Built: 2014

Country: France

Fly Bridge: Yes

Cockpit: Yes

Dimensions

LOA: 146' 8" (44.70m)

LWL: 127' 6" (38.84m)

Beam: 29' 10" (9.08m)

Min Draft: 9' 5" (2.85m)

Speed, Capacities and Weight

Cruise Speed: 10 Kts. (12 MPH)

Cruise Speed RPM: 1635 Kts.

Cruise Speed Range: 4000

Max Speed: 14 Kts. (16 MPH)

Displacement: 919327.63254 Pounds

Gross Tonnage: 498 Pounds

Water Capacity: 3592.7399072 Gallons

Holding Tank: 2202.402397524 Gallons

Fuel Capacity: 17831.61351 Gallons

Fuel Consumption: 49.136001672 Gallons

Accommodations

Total Cabins: 5

Total Berths: 7

Sleeps: 10

Captain Cabin: True

Crew Cabin: 5

Crew Berths: 10

Crew Sleeps: 10

Hull and Deck Information

Hull Material: Steel

Hull Configuration: Displacement w/
Bulbous Bow

Hull Color: Dark Bue (Carinthia blue)

Hull Designer: Vripack Yachting
International

Exterior Designer: Vripack Yachting
International

Interior Designer: A.Frangulyan Studio

Engine Information

Engines: 2

Manufacturer: Caterpillar

Model: 3412E DI-TA (V-12)

Engine Type: Inboard

Fuel Type: Diesel

DETAILED INFORMATION

Detailed Information

This is the 8th yacht built at the shipyard. Having got rid of infantile diseases peculiar to first hulls, indeed it complies with world standards approved in the yacht building industry. It was contributed also by the fact that the Customer took the direct participation in the creation of the renewed project. Much attention was paid to different details and peculiarities, due to which the Owner's and guests' stay at the yacht will be comfortable to the maximum.

All components and elements of the yacht pertain to the higher segment of the world producers of the yacht equipment. Russian craftsmen worked over the hull and superstructure formation. The whole construction process was controlled by the equipment, Class and Flag suppliers.

45-meters yacht Beluga – is the maximum space application, both in technical and comfort terms. The deck layout of the ship is carefully designed, and the rational use of the deck provides for the additional comfort. The yacht is equipped with the high-spec class equipment.

One more peculiarity of TM-45 – is spacious deck areas. The sundeck has a lot of open space, with two large sofas for sunbathing. A large Jacuzzi can admit up to six persons, and the bar with onyx surface has a grill. The sundeck is also equipped with sun-protecting canvases produced by Multiplex (Germany) that creates the saving shadow over the bar and Jacuzzi.

Two dining zones are provided at the yacht: in the cabin of the main deck and in the open aft of the upper deck. The exterior dining zone is protected from wind, sun and prying eyes with sliding windows with blinds.

The best sort of leather produced in Italy is used in the interior, including certified skin of elephants, rare and valuable wood. Onyx was preferred for marble surfaces.

The yacht is completed with 6-meters tender Novurania Equator 600 LP and jet boat Yamaha VXS. All lux premises are equipped with AB equipment of the higher quality segment. Two satellite antennas are installed on the mast to receive TV and Internet.

The video surveillance system is installed in the yacht; it enables preventing unauthorized trespassing.

The yacht is designed for sea passages in any weather conditions, that is why it possesses both aesthetic view and excellent technical properties. The ship was built in accordance with DNV and MCA requirements and, thus, ideally suits charter voyages.

Undeniable advantages of TM-45 project are shown below with regard to standard yachts 45 meters long (up to 500GT):

- the availability of the full-fledged sauna with a comfortable access to the swimming platform
- a unique interior with a large number of lacquered surfaces made of wenge, Mexican

rosewood, surfaces of sanitary facilities are covered with onyx and decorated with borders made of semi-precious stones.

- LED lamps are used in the yacht premises, as well as dimming switches that allows reducing the load on the diesel generator and mitigate the heat loss in cabins.
- all audio/video equipment in cabins/saloons and in open decks is compatible and can be operated by Ipod.
- Baxter handles were used for doors, cabinets.
- light-reflecting blinds are installed in cabins; they remove bright sunshine but do not prevent enjoying the view from the window.
- the yacht deck layout is thought over in details: the routes of the crew and guests do not intercross. There is a food elevator for the servicing of guests in the sundeck and upper deck
- the lower deck has two big VIP cabins for guests
- the crew has its own galley and a large saloon for recreation
- opening illuminators are installed in the master cabins. Windows are made of the bullet-proof glass (Netherlands)
- the lower deck cabins have large illuminators (the maximum allowable size for such yacht class)
- the refrigerating technique includes: . full-size refrigerating room Porrka, 1 full-size home freezer and 3 full-size refrigerators in the galley, 1 full-size refrigerator in the upper saloon for the Owner's quick access, a wine refrigerator in the upper saloon and a freezing chamber for garbage, ice generators at every deck
- the yacht garage has a glass roof providing natural lighting
- the yacht is equipped with GSM signal amplifier enabling the comfort conversation by a cellular phone in any ship room.
- 10 pcs of underwater lamps are installed in the yacht aft
- the yacht is fully equipped by both the supply and the crew
- due to the reinforced insulation yacht far exceeds all the requirements for noise prevention and vibration while engines, generators and hydraulic system running
- the yacht building was controlled by Moran Yachts Company (general performance quality)

Mechanical Equipment

Exhaust system	Marquip
Gross line	Amartech
Steering apparatus	Jastram Engineering Ltd.
Rolling stabilizers	Quantum
Thruster	Van der Velden

Hydraulic system	Quantum
Electric system and electric equipment	Imtech
Monitoring and signaling system	Imtech
Navigation and radio-communication equipment	Furuno
Cranes	Opacmare
Stern and side ladder	Opacmare
Anchor and mooring equipment	Muir
Ventilation and air conditioning system	H&H
Noise and vibration insulation system	Van Cappellen
Jacuzzi	Hoesch COLORADO, 2 cum
Engines hours: port/starboard	718 hr / 717 hr
Generators hours: port/starboard	1024 hr / 1024 hr
TENDER	Novurania Equator 600LP 6.5 meters

Exclusions

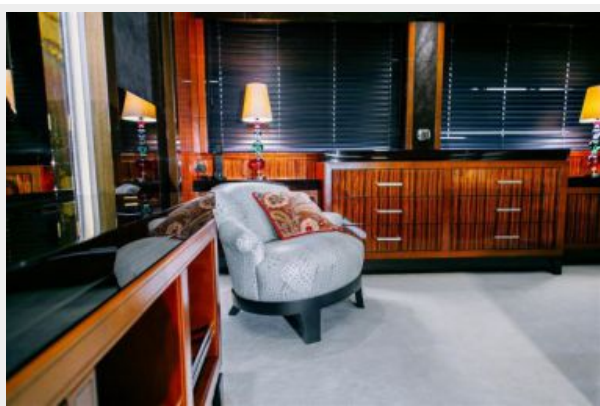
Owner's personal belongings.

Disclaimer

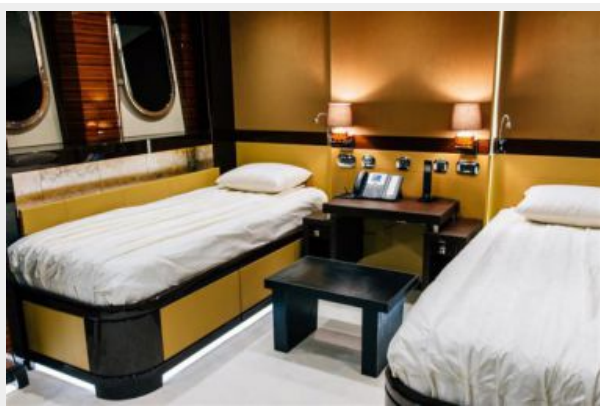
The Company offers the details of this vessel or yacht in good faith but cannot guarantee or warrant the accuracy of this information nor warrant the condition of the vessel. A buyer should instruct his representatives, agents, or his surveyors, to investigate such details as the buyer desires validated. This vessel or yacht is offered subject to prior sale, price change, or withdrawal without notice.

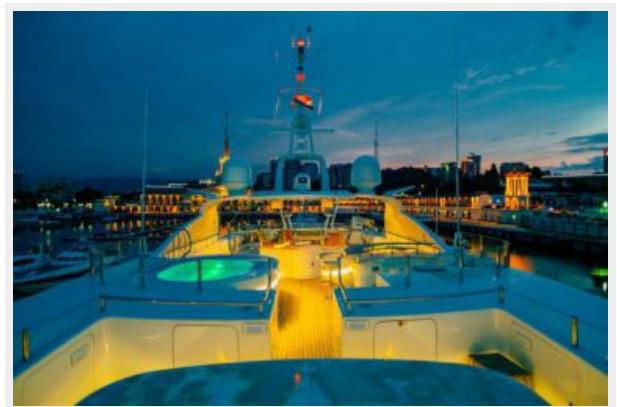
PHOTOS

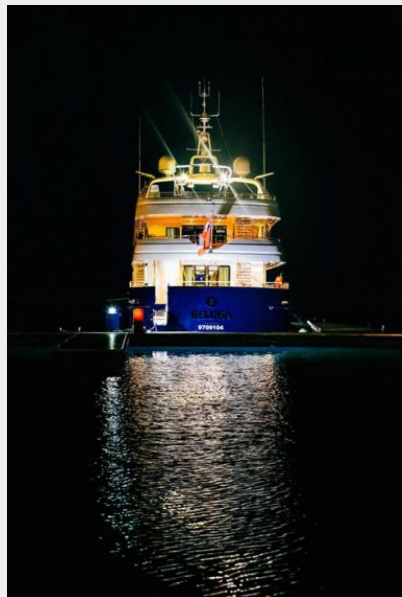
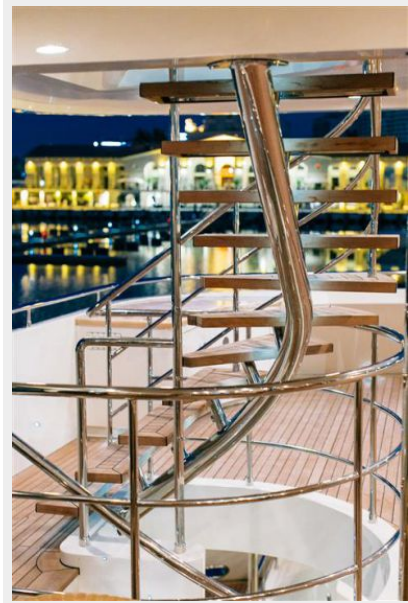


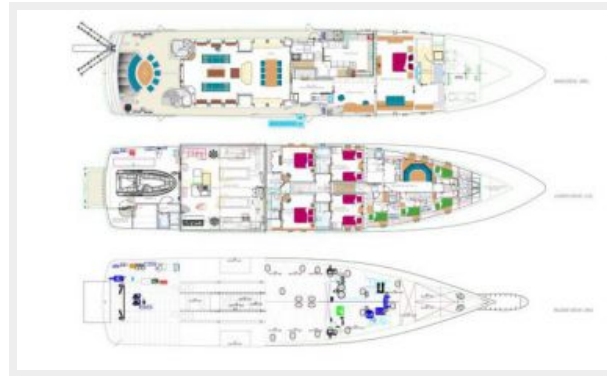












CONTACTS

Andrey Shestakov, leading yacht broker of the sales department of Shestakov Yacht Sales Inc. Shestakov Yacht Sales Inc., the official representative of the Miami/Fort Lauderdale FL headquarters.

Contact details

Email: andrey@shestakovyachtsales.com

Web: shestakovyachtsales.com/en/

Telephones

USA: +1(954)274-4435

Office hours

Monday – Saturday: **9:00 - 21:00** EDT

Sunday: **closed**

Address



Harbour Towne Marina, 850 NE 3rd St,
STE 213, Dania, FL 33004