

BELUGA — TIMMERMAN YACHTS



Судостроитель: TIMMERMAN YACHTS

Год постройки: 2014

Модель: Моторная яхта

Цена: **ЦЕНА ЯХТЫ ПО ЗАПРОСУ**

Местонахождение: France

Длина общая: 146' 8" (44.70m)

Ширина: 29' 10" (9.08m)

Мин. осадка: 9' 5" (2.85m)

Крейс. скорость: 10 Kts. (12 MPH)

Макс. скорость: 14 Kts. (16 MPH)

Купить **Beluga — TIMMERMAN YACHTS** а также выбрать подходящую вам яхту из нашего каталога яхт вам поможет опытный яхтенный брокер Андрей Шестаков. На сегодняшний день компания **Shestakov Yacht Sales Inc.** имеет большое количество яхт в собственном списке продаж, а также тесно сотрудничает со всеми крупными яхтенными производителями по всему миру.

Для того чтобы купить яхту **Beluga — TIMMERMAN YACHTS** а также проконсультироваться по любому вопросу связанному с покупкой, продажей, чартером яхт позвоните по телефону **+7(918)465-66-44**.

ОГЛАВЛЕНИЕ

ОГЛАВЛЕНИЕ	2
ХАРАКТЕРИСТИКИ	3
Обзор	3
Основная информация	6
Размеры	6
Скорость, вместимость и масса	6
Размещение	7
Корпус и палуба	7
Информация о двигателе	7
ПОДРОБНОЕ ОПИСАНИЕ	8
Detailed Information	8
Исключения	10
Отказ от ответственности	10
ФОТОГРАФИИ	12
КОНТАКТЫ	19
Контактная информация	19
Телефоны	19
Время работы	19
Адрес	19

ХАРАКТЕРИСТИКИ

Обзор

This is the 8th yacht built at the shipyard. Built to comply with world standards approved in the yacht building industry. It was contributed also by the fact that the Customer took the direct participation in the creation of the renewed project. Much attention was paid to different details and peculiarities, due to which the Owner's and guests' stay at the yacht will be comfortable to the maximum.

All components and elements of the yacht pertain to the higher segment of the world producers of the yacht equipment. Russian craftsmen worked over the hull and superstructure formation. The whole construction process was controlled by the equipment, Class and Flag suppliers.

45-meters yacht Beluga – is the maximum space application, both in technical and comfort terms. The deck layout of the ship is carefully designed, and the rational use of the deck provides for the additional comfort. The yacht is equipped with the high-spec class equipment.

One more peculiarity of TM-45 – is spacious deck areas. The sundeck has a lot of open space, with two large sofas for sunbathing. A large Jacuzzi can admit up to six persons, and the bar with onyx surface has a grill. The sundeck is also equipped with sun-protecting canvases produced by Multiplex (Germany) that creates the saving shadow over the bar and Jacuzzi.

Two dining zones are provided at the yacht: in the cabin of the main deck and in the open aft of the upper deck. The exterior dining zone is protected from wind, sun and prying eyes with sliding windows with blinds.

The best sort of leather produced in Italy is used in the interior, including certified skin of elephants, rare and valuable wood. Onyx was preferred for marble surfaces.

The yacht is completed with 6-meters tender Novurania Equator 600 LP and jet boat Yamaha VXS. All lux premises are equipped with AB equipment of the higher quality segment. Two satellite antennas are installed on the mast to receive TV and Internet.

The video surveillance system is installed in the yacht; it enables preventing unauthorized trespassing.

The yacht is designed for sea passages in any weather conditions, that is why it possesses both aesthetic view and excellent technical properties. The ship was built in accordance with DNV and MCA requirements and, thus, ideally suits charter voyages.

Undeniable advantages of TM-45 project are shown below with regard to standard yachts 45 meters long (up to 500GT):

- the availability of the full-fledged sauna with a comfortable access to the swimming platform
- a unique interior with a large number of lacquered surfaces made of wenge, Mexican

rosewood, surfaces of sanitary facilities are covered with onyx and decorated with borders made of semi-precious stones.

- LED lamps are used in the yacht premises, as well as dimming switches that allows reducing the load on the diesel generator and mitigate the heat loss in cabins.
- all audio/video equipment in cabins/saloons and in open decks is compatible and can be operated by Ipod.
- Baxter handles were used for doors, cabinets.
- light-reflecting blinds are installed in cabins; they remove bright sunshine but do not prevent enjoying the view from the window.
- the yacht deck layout is thought over in details: the routes of the crew and guests do not intercross. There is a food elevator for the servicing of guests in the sundeck and upper deck
- the lower deck has two big VIP cabins for guests
- the crew has its own galley and a large saloon for recreation
- opening illuminators are installed in the master cabins. Windows are made of the bullet-proof glass (Netherlands)
- the lower deck cabins have large illuminators (the maximum allowable size for such yacht class)
- the refrigerating technique includes: . full-size refrigerating room Porrka, 1 full-size home freezer and 3 full-size refrigerators in the galley, 1 full-size refrigerator in the upper saloon for the Owner's quick access, a wine refrigerator in the upper saloon and a freezing chamber for garbage, ice generators at every deck
- the yacht garage has a glass roof providing natural lighting
- the yacht is equipped with GSM signal amplifier enabling the comfort conversation by a cellular phone in any ship room.
- 10 pcs of underwater lamps are installed in the yacht aft
- the yacht is fully equipped by both the supply and the crew
- due to the reinforced insulation yacht far exceeds all the requirements for noise prevention and vibration while engines, generators and hydraulic system running
- the yacht building was controlled by Moran Yachts Company (general performance quality)

Mechanical Equipment

Exhaust system	Marquip
Gross line	Amartech
Steering apparatus	Jastram Engineering Ltd.
Rolling stabilizers	Quantum
Thruster	Van der Velden

Hydraulic system	Quantum
Electric system and electric equipment	Imtech
Monitoring and signaling system	Imtech
Navigation and radio-communication equipment	Furuno
Cranes	Opacmare
Stern and side ladder	Opacmare
Anchor and mooring equipment	Muir
Ventilation and air conditioning system	H&H
Noise and vibration insulation system	Van Cappellen
Jacuzzi	Hoesch COLORADO, 2 cum
Engine hours: port/starboard	718 / 717
Generators hours: port/starboard	1024 / 1024
TENDER	Novurania Equator 600LP 6.01 meters

Основная информация

Тип судна: Моторная яхта	Модельный год: 2007
Год постройки: 2014	Страна: France
Открытая палуба мостика: Да	Кубрик: Да

Размеры

Длина общая: 146' 8" (44.70m)	Длина по ватерлинии: 127' 6" (38.84m)
Ширина: 29' 10" (9.08m)	Мин. осадка: 9' 5" (2.85m)

Скорость, вместимость и масса

Крейс. скорость: 10 Kts. (12 MPH)	Крейсерская скорость поворота: 1635 Kts.
Дальность на крейсерской скорости: 4000	Макс. скорость: 14 Kts. (16 MPH)
Чистый вес: 498 Pounds	Водоизмещение: 919327.63254 Pounds
Вместимость сточного бака: 2202.402397524 Gallons	Вместимость воды: 3592.7399072 Gallons
Расход топлива: 49.136001672 Gallons	Объем топливного бака: 17831.61351 Gallons

Размещение

Всего кают: 5

Всего коек: 7

Спальные места: 10

Каюта капитана: Да

Каюты экипажа: 5

Койки экипажа: 10

Спальных мест экипажа: 10

Корпус и палуба

Материал корпуса: Steel

Комплектация корпуса: Displacement w/
Bulbous Bow

Цвет корпуса: Dark Bue (Carinthia blue)

Дизайнер корпуса: Vripack Yachting
International

Дизайнер экстерьера: Vripack Yachting
International

Дизайнер интерьера: A.Frangulyan
Studio

Информация о двигателе

Двигатели: 2

Производитель: Caterpillar

Модель: 3412E DI-TA (V-12)

Тип двигателя: Inboard

Тип топлива: Diesel

ПОДРОБНОЕ ОПИСАНИЕ

Detailed Information

This is the 8th yacht built at the shipyard. Having got rid of infantile diseases peculiar to first hulls, indeed it complies with world standards approved in the yacht building industry. It was contributed also by the fact that the Customer took the direct participation in the creation of the renewed project. Much attention was paid to different details and peculiarities, due to which the Owner's and guests' stay at the yacht will be comfortable to the maximum.

All components and elements of the yacht pertain to the higher segment of the world producers of the yacht equipment. Russian craftsmen worked over the hull and superstructure formation. The whole construction process was controlled by the equipment, Class and Flag suppliers.

45-meters yacht Beluga – is the maximum space application, both in technical and comfort terms. The deck layout of the ship is carefully designed, and the rational use of the deck provides for the additional comfort. The yacht is equipped with the high-spec class equipment.

One more peculiarity of TM-45 – is spacious deck areas. The sundeck has a lot of open space, with two large sofas for sunbathing. A large Jacuzzi can admit up to six persons, and the bar with onyx surface has a grill. The sundeck is also equipped with sun-protecting canvases produced by Multiplex (Germany) that creates the saving shadow over the bar and Jacuzzi.

Two dining zones are provided at the yacht: in the cabin of the main deck and in the open aft of the upper deck. The exterior dining zone is protected from wind, sun and prying eyes with sliding windows with blinds.

The best sort of leather produced in Italy is used in the interior, including certified skin of elephants, rare and valuable wood. Onyx was preferred for marble surfaces.

The yacht is completed with 6-meters tender Novurania Equator 600 LP and jet boat Yamaha VXS. All lux premises are equipped with AB equipment of the higher quality segment. Two satellite antennas are installed on the mast to receive TV and Internet.

The video surveillance system is installed in the yacht; it enables preventing unauthorized trespassing.

The yacht is designed for sea passages in any weather conditions, that is why it possesses both aesthetic view and excellent technical properties. The ship was built in accordance with DNV and MCA requirements and, thus, ideally suits charter voyages.

Undeniable advantages of TM-45 project are shown below with regard to standard yachts 45 meters long (up to 500GT):

- the availability of the full-fledged sauna with a comfortable access to the swimming platform
- a unique interior with a large number of lacquered surfaces made of wenge, Mexican

rosewood, surfaces of sanitary facilities are covered with onyx and decorated with borders made of semi-precious stones.

- LED lamps are used in the yacht premises, as well as dimming switches that allows reducing the load on the diesel generator and mitigate the heat loss in cabins.
- all audio/video equipment in cabins/saloons and in open decks is compatible and can be operated by Ipod.
- Baxter handles were used for doors, cabinets.
- light-reflecting blinds are installed in cabins; they remove bright sunshine but do not prevent enjoying the view from the window.
- the yacht deck layout is thought over in details: the routes of the crew and guests do not intercross. There is a food elevator for the servicing of guests in the sundeck and upper deck
- the lower deck has two big VIP cabins for guests
- the crew has its own galley and a large saloon for recreation
- opening illuminators are installed in the master cabins. Windows are made of the bullet-proof glass (Netherlands)
- the lower deck cabins have large illuminators (the maximum allowable size for such yacht class)
- the refrigerating technique includes: . full-size refrigerating room Porrka, 1 full-size home freezer and 3 full-size refrigerators in the galley, 1 full-size refrigerator in the upper saloon for the Owner's quick access, a wine refrigerator in the upper saloon and a freezing chamber for garbage, ice generators at every deck
- the yacht garage has a glass roof providing natural lighting
- the yacht is equipped with GSM signal amplifier enabling the comfort conversation by a cellular phone in any ship room.
- 10 pcs of underwater lamps are installed in the yacht aft
- the yacht is fully equipped by both the supply and the crew
- due to the reinforced insulation yacht far exceeds all the requirements for noise prevention and vibration while engines, generators and hydraulic system running
- the yacht building was controlled by Moran Yachts Company (general performance quality)

Mechanical Equipment

Exhaust system	Marquip
Gross line	Amartech
Steering apparatus	Jastram Engineering Ltd.
Rolling stabilizers	Quantum
Thruster	Van der Velden

Hydraulic system	Quantum
Electric system and electric equipment	Imtech
Monitoring and signaling system	Imtech
Navigation and radio-communication equipment	Furuno
Cranes	Opacmare
Stern and side ladder	Opacmare
Anchor and mooring equipment	Muir
Ventilation and air conditioning system	H&H
Noise and vibration insulation system	Van Cappellen
Jacuzzi	Hoesch COLORADO, 2 cum
Engines hours: port/starboard	718 hr / 717 hr
Generators hours: port/starboard	1024 hr / 1024 hr
TENDER	Novurania Equator 600LP 6.5 meters

Исключения

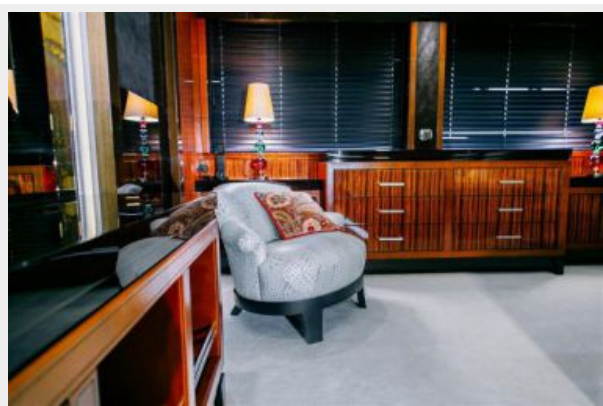
При продаже яхты исключаются личные вещи владельца.

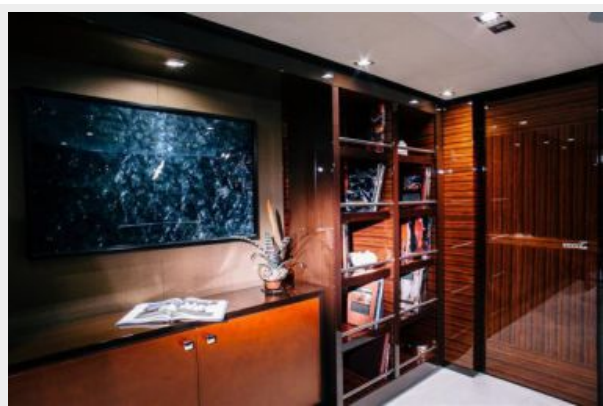
Отказ от ответственности

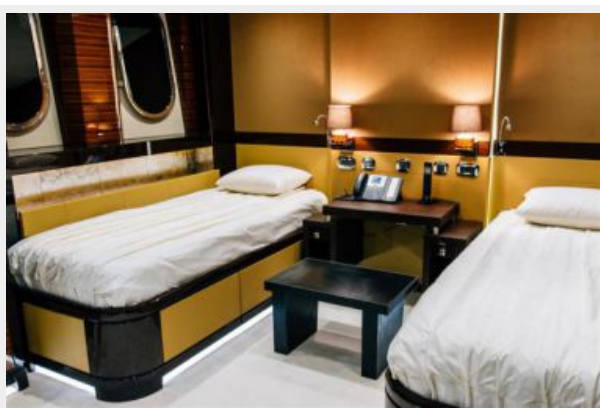
Компания предоставляет описание судна или яхты добросовестно, но не может гарантировать точность этой информации, а также не ручается за техническое состояние. Покупатель должен проинструктировать своих агентов или оценщиков исследовать представленную информацию более подробно, по собственному желанию. Продажа судна или яхты, изменение цены или снятие с продажи будет происходить без предварительного уведомления.

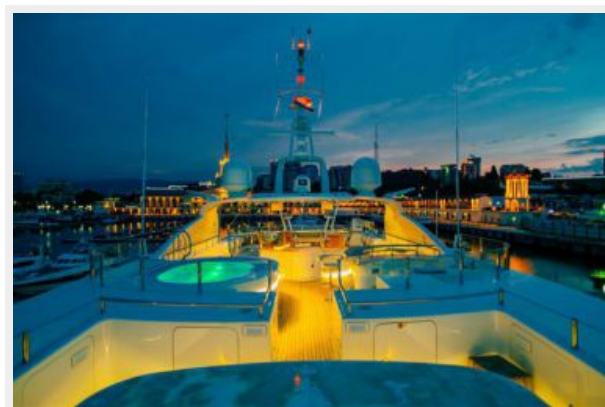
ФОТОГРАФИИ

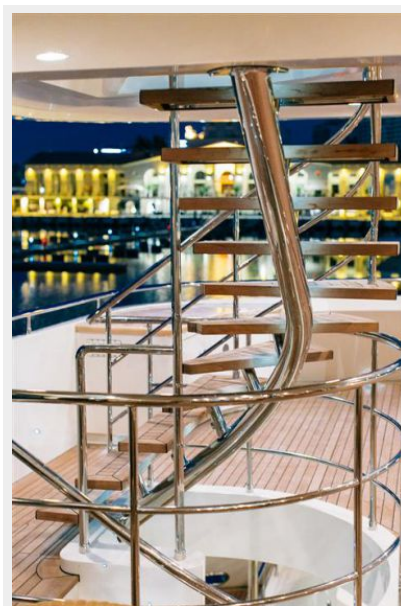
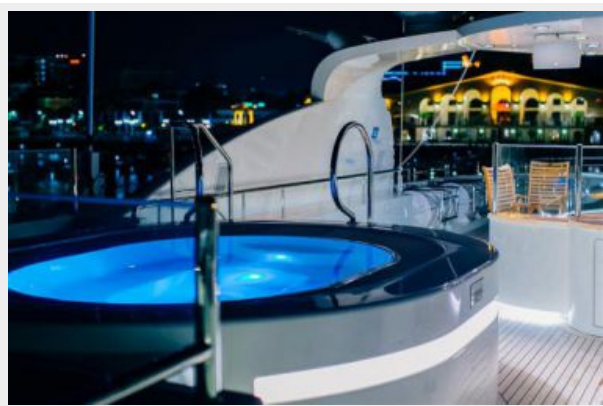


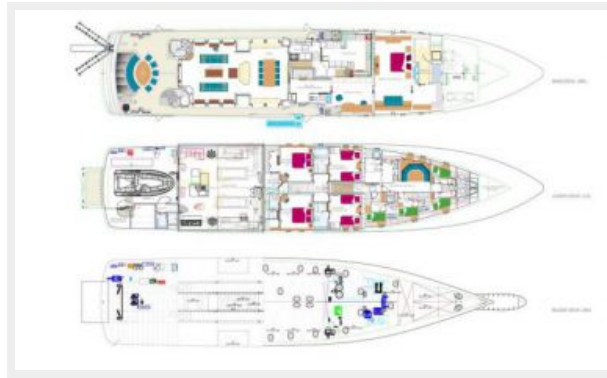












КОНТАКТЫ

Андрей Шестаков (Andrey Shestakov) – ведущий яхтенный брокер отдела продаж яхт и судов компании Shestakov Yacht Sales Inc. Официальный представитель Shestakov Yacht Sales Inc. для русскоговорящих клиентов в центральном офисе компании в Майами/Форт Лодердейл/Флорида/США.

Контактная информация

Email: andrey@shestakovyachtsales.com

Web: shestakovyachtsales.com

Телефоны

Краснодарский край: **+7(918)465-66-44**

США, Майами, Флорида: **+1(954)274-4435**

Время работы

Понедельник – Суббота: **9:00 - 21:00**
EDT

Воскресенье: **Закрето**

Адрес



Harbour Towne Marina, 850 NE 3rd St,
STE 213, Dania, FL 33004