

## NO NAME — CRUISERS YACHTS



**Builder:** Cruisers Yachts

**LOA:** 32' 0" (9.75m)

**Year Built:** 2006

**Beam:** 11' 3" (3.43m)

**Model:** Cruiser

**Max Draft:** 2' 11" (0.89m)

**Price:** PRICE ON APPLICATION

**Location:** United States

Our experienced yacht broker, Andrey Shestakov, will help you choose and buy a yacht that best suits your needs **No Name — Cruisers Yachts** from our catalogue. Presently, at Shestakov Yacht Sales Inc., we have a wide variety of yachts available on our sale's list. We also work in close contact with all the big yacht manufacturers from all over the world.

If you would like to buy a yacht **No Name — Cruisers Yachts** or would like help answering any questions concerning purchasing, selling or chartering a yacht, please call **+1(954)274-4435**

---

# TABLE OF CONTENTS

---

TABLE OF CONTENTS	2
SPECIFICATIONS	5
Overview	5
Basic Information	5
Dimensions	5
Speed, Capacities and Weight	5
Accommodations	5
Hull and Deck Information	6
Engine Information	6
DETAILED INFORMATION	7
Vessel Walk Through	7
Main Cabin	7
Galley	7
Forward Cabin	7
Aft Cabin	7
Marine Bathroom	8
Inside Equipment	8
Helm & Cockpit	8
Electronics	8
Electrical Equipment	8
Outside Equipment/Extras	8
Covers	9
Equipment	9
Exclusions	9
Exclusions	9
Disclaimer	9
PHOTOS	10
Salon	10

Salon	10
Salon/Dinette	10
Flatscreen/TV-Pivots	10
Midcabin Couch- Bed	10
Galley	10
Galley	11
Main Distribution Panel	11
Forward Berth	11
Large Berth	11
Vacuflush Head	11
Main Helm	11
Helm Seat w/ Thigh Rise Bolster	12
Dashboard	12
VHF	12
Raymarine C120	12
Port Engine	12
Engine Room	12
Starboard Engine	13
Walkthru Windshield	13
Bow Pad	13
Windlass and Spotlight	13
Cockpit	13
Cockpit	13
Aft Cockpit	14
Cockpit	14
Cockpit Cover	14
Transom	14
Large Platform	14
Forward Port Quarter	14

---

Port Profile	15
Port Profile	15
Forward Starboard Quarter	15
Aft Port Quarter	15
Aft Starboard Quarter	15
Manufactuer Provided Image	15
Layout	16
CONTACTS	17
Contact details	17
Telephones	17
Office hours	17
Address	17

---

# SPECIFICATIONS

---

## Overview

---

Here is an excellent opportunity to purchase an inboard 32' 2006 Express Cruiser with **6.2 Fresh Water Cooled Mercruiser 6.2 Horizon engines that were replaced in August of 2013**. There are only 35 hours on her since her engines were replaced. This two stateroom layout is one of the roomiest express style designs in this size range you will ever see. She is a loaded vessel and has a newer Raymarine C120 Color Chartplotter and a 5KW Kohler generator. This vessel is priced to sell! Call today to arrange your easy showing!

## Basic Information

---

**Category:** Cruiser

**Sub Category:** Express

**Model Year:** 2006

**Year Built:** 2006

**Country:** United States

## Dimensions

---

**LOA:** 32' 0" (9.75m)

**Beam:** 11' 3" (3.43m)

**Max Draft:** 2' 11" (0.89m)

**Clearance:** 9' 5" (2.87m)

## Speed, Capacities and Weight

---

**Displacement:** 13500 Pounds

**Water Capacity:** 40 Gallons

**Holding Tank:** 30 Gallons

**Fuel Capacity:** 200 Gallons

## Accommodations

---

**Total Berths:** 2

**Total Heads:** 1

---

## Hull and Deck Information

---

**Hull Material:** Fiberglass

## Engine Information

---

**Engines:** 2

**Manufacturer:** Mercruiser

**Model:** 6.2 MPI Horizon FWC

**Engine Type:** Inboard

**Fuel Type:** Gas

---

# DETAILED INFORMATION

---

## Vessel Walk Through

---

Above deck, the Cruisers 320 Express features a triple-wide helm seat for maximum cruising comfort as well as a walk-through windshield allowing for easy fore deck access. What's more, a fully concealed anchor locker eliminates the toe-stubbing often associated with foredeck chores. Further aft, she offers fore- and aft-facing cockpit seating and a twin convertible cockpit table/sun lounge, perfect for catching afternoon rays. This well-thought-out cockpit arrangement also includes a cockpit shower and an available ice maker, should a delightful summer day call for entertaining on the water. Beneath her sleek express exterior, the 320 achieves an impressive "family room" feel with an airy salon, lovely detailing and elegant appointments. She offers wide-open living space from the forward stateroom to the comfortable aft settee, and she offers more headroom than any boat in her class. Three large ventilating skylights bathe the interior with plenty of natural light. The large forward stateroom includes a generous double berth, ample storage space and a privacy curtain. A fully equipped galley, located to port, offers all the necessary amenities, such as an electric stove, large refrigerator and microwave oven. Across from the galley lies a crescent-shaped dinette, which can be converted into a berth for extra overnight guests. The aft settee also easily converts to a double berth, and a privacy curtain offers an extra measure of convenience. As an additional liveaboard luxury, the 320 features a roomy head, unsurpassed in this size class, with full standing headroom.

## Main Cabin

---

Spacious main cabin with dinette that converts to additional berth; wood dinette table

## Galley

---

Well-designed galley with molded sink with faucet with hot/cold water; sink cover; Princess electric stove; Black & Decker coffee maker; Tappan microwave; Tundra 12v refrigerator; hot water heater; galley cabinets and drawers; overhead light.

## Forward Cabin

---

Beautiful forward cabin with color coordinated upholstery and throw pillow; reading lights; mirrored headboard; hanging locker; storage compartments; Flat screen Insignia television with DVD player (Swivels from Forward Stateroom to Salon)

## Aft Cabin

---

Spacious aft cabin with upholstered sofa that converts to additional berth; hanging locker;

---

storage compartments; reading lights

## Marine Bathroom

---

Private enclosed **Vacuflush head** with locking door and standing headroom and a separate shower; holding tank; Tank Watch waste level indicator; sink and shower with hot/cold water; fan; shower curtain; storage compartments; overhead light

## Inside Equipment

---

- 12000 BTU Air Conditioning w/Heat
- Vacuflush Marine head
- Microwave Oven
- Hot water
- Battery charger
- Refrigerator
- Flatscreen TV (Which swivels from the main salon to the forward stateroom) with DVD player

## Helm & Cockpit

---

Spacious helm and cockpit with full backlit instrumentation at the helm; triple wide bench helm seat with flip up bolsters; companion seat lounge; spacious aft cockpit seating area with cockpit table; cockpit wet bar with sink, faucet; cup holders; stereo speakers; cockpit carpet; storage compartments

## Electronics

---

- Raymarine C120 Color Chartplotter /GPS
- Depthsounder
- Compass - Plastimo
- Stereo with 6 disc CD player with helm remote
- Raymarine 215 VHF

## Electrical Equipment

---

- Dual 30 AMP Shore Power inlet with White Cords
- Generator - Kohler 5.0 kW

## Outside Equipment/Extras

---



- Windlass
- Remote Spotlight
- Bow Sunpad
- Walkthrough Windsheild
- Cockpit cushions
- Cockpit table
- Extra-Large Swim Platform w/ Ladder
- Hot and Cold Cockpit shower

---

## Covers

---

- Bimini Top
- Cockpit Cover

---

## Equipment

---

Bennett trim tabs; swim platform with swim ladder; dockside water; cockpit shower with hot/cold water; battery charger; Fireboy automatic fire extinguishing system; batteries with switches; port & starboard windshield wipers; remote spotlight; television connector; fixed anchor light; life preservers; fire extinguishers; shore power cords; Danforth style anchor; fenders; extended swim platform

---

## Exclusions

---

Owner's personal possessions

---

## Exclusions

---

Owner's personal belongings.

---

## Disclaimer

---

The Company offers the details of this vessel or yacht in good faith but cannot guarantee or warrant the accuracy of this information nor warrant the condition of the vessel. A buyer should instruct his representatives, agents, or his surveyors, to investigate such details as the buyer desires validated. This vessel or yacht is offered subject to prior sale, price change, or withdrawal without notice.

# PHOTOS

Salon



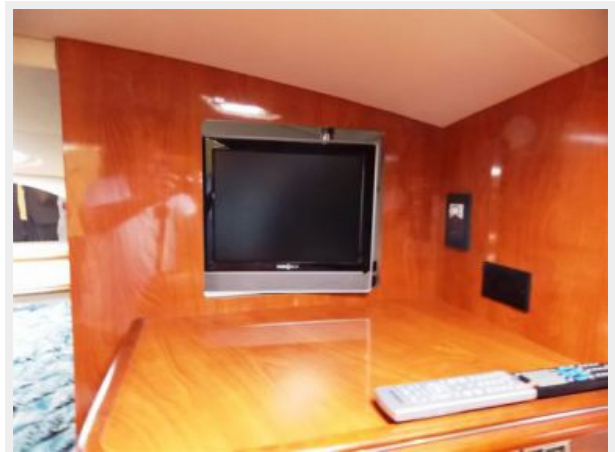
Salon



Salon/Dinette



Flatscreen/TV-Pivots



Midcabin Couch- Bed



Galley



**Galley**



**Main Distribution Panel**



**Forward Berth**



**Large Berth**



**Vacuflush Head**



**Main Helm**



### Helm Seat w/ Thigh Rise Bolster



### Dashboard



### VHF



### Raymarine C120



### Engine Room



### Port Engine



**Starboard Engine**



**Walkthru Windshield**



**Bow Pad**



**Windlass and Spotlight**



**Cockpit**



**Cockpit**



**Aft Cockpit**



**Cockpit**



**Cockpit Cover**



**Transom**



**Large Platform**



**Forward Port Quarter**



**Port Profile**



**Port Profile**



**Aft Port Quarter**



**Forward Starboard Quarter**



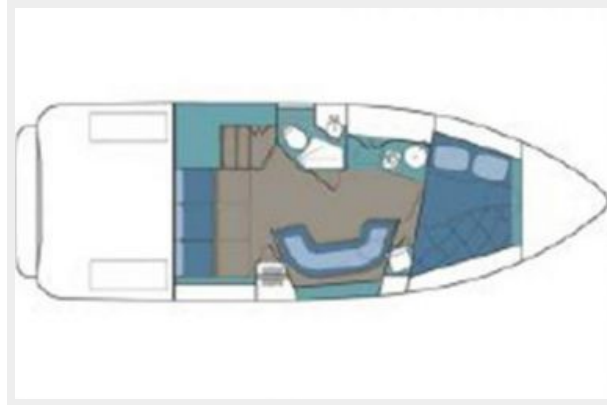
**Aft Starboard Quarter**



**Manufacturer Provided Image**



## Layout





---

# CONTACTS

---

Andrey Shestakov, leading yacht broker of the sales department of Shestakov Yacht Sales Inc. Shestakov Yacht Sales Inc., the official representative of the Miami/Fort Lauderdale FL headquarters.

---

## Contact details

---

Email: [andrey@shestakovyachtsales.com](mailto:andrey@shestakovyachtsales.com)

Web: [shestakovyachtsales.com/en/](http://shestakovyachtsales.com/en/)

---

## Telephones

---

USA: +1(954)274-4435

---

## Office hours

---

Monday – Saturday: **9:00 - 21:00** EDT

Sunday: **closed**

---

## Address

---



Harbour Towne Marina, 850 NE 3rd St,  
STE 213, Dania, FL 33004