

## NO NAME — CRUISERS YACHTS



**Судостроитель:** Cruisers Yachts

**Год постройки:** 2006

**Модель:** Крейсер

**Цена:** ЦЕНА ЯХТЫ ПО ЗАПРОСУ

**Местонахождение:** United States

**Длина общая:** 32' 0" (9.75m)

**Ширина:** 11' 3" (3.43m)

**Макс. осадка:** 2' 11" (0.89m)

Купить No Name — Cruisers Yachts а также выбрать подходящую вам яхту из нашего каталога яхт вам поможет опытный яхтенный брокер Андрей Шестаков. На сегодняшний день компания Shestakov Yacht Sales Inc. имеет большое количество яхт в собственном списке продаж, а также тесно сотрудничает со всеми крупными яхтенными производителями по всему миру.

Для того чтобы купить яхту No Name — Cruisers Yachts а также проконсультироваться по любому вопросу связанному с покупкой, продажей, чартером яхт позвоните по телефону **+7(918)465-66-44**.

# ОГЛАВЛЕНИЕ

ОГЛАВЛЕНИЕ	2
ХАРАКТЕРИСТИКИ	5
Обзор	5
Основная информация	5
Размеры	5
Скорость, вместимость и масса	5
Размещение	5
Корпус и палуба	6
Информация о двигателе	6
ПОДРОБНОЕ ОПИСАНИЕ	7
Vessel Walk Through	7
Main Cabin	7
Galley	7
Forward Cabin	7
Aft Cabin	7
Marine Bathroom	8
Inside Equipment	8
Helm & Cockpit	8
Electronics	8
Electrical Equipment	8
Outside Equipment/Extras	8
Covers	9
Equipment	9
Exclusions	9
Исключения	9
Отказ от ответственности	9
ФОТОГРАФИИ	10
Salon	10

Salon	10
Salon/Dinette	10
Flatscreen/TV-Pivots	10
Midcabin Couch- Bed	10
Galley	10
Galley	11
Main Distribution Panel	11
Forward Berth	11
Large Berth	11
Vacuflush Head	11
Main Helm	11
Helm Seat w/ Thigh Rise Bolster	12
Dashboard	12
VHF	12
Raymarine C120	12
Port Engine	12
Engine Room	12
Starboard Engine	13
Walkthru Windshield	13
Bow Pad	13
Windlass and Spotlight	13
Cockpit	13
Cockpit	13
Aft Cockpit	14
Cockpit	14
Cockpit Cover	14
Transom	14
Large Platform	14
Forward Port Quarter	14

---

Port Profile	15
Port Profile	15
Forward Starboard Quarter	15
Aft Port Quarter	15
Aft Starboard Quarter	15
Manufactuer Provided Image	15
Layout	16
КОНТАКТЫ	17
Контактная информация	17
Телефоны	17
Время работы	17
Адрес	17

# ХАРАКТЕРИСТИКИ

## Обзор

Here is an excellent opportunity to purchase an inboard 32' 2006 Express Cruiser with **6.2 Fresh Water Cooled Mercruiser 6.2 Horizon engines that were replaced in August of 2013**. There are only 35 hours on her since her engines were replaced. This two stateroom layout is one of the roomiest express style designs in this size range you will ever see. She is a loaded vessel and has a newer Raymarine C120 Color Chartplotter and a 5KW Kohler generator. This vessel is priced to sell! Call today to arrange your easy showing!

## Основная информация

**Тип судна:** Крейсер

**Подкатегория:** Express

**Модельный год:** 2006

**Год постройки:** 2006

**Страна:** United States

## Размеры

**Длина общая:** 32' 0" (9.75m)

**Ширина:** 11' 3" (3.43m)

**Макс. осадка:** 2' 11" (0.89m)

**Трапы:** 9' 5" (2.87m)

## Скорость, вместимость и масса

**Водоизмещение:** 13500 Pounds

**Вместимость воды:** 40 Gallons

**Вместимость сточного бака:** 30 Gallons

**Объем топливного бака:** 200 Gallons

## Размещение

**Всего коек:** 2

**Всего ком. состава:** 1

---

## Корпус и палуба

---

**Материал корпуса:** Fiberglass

---

## Информация о двигателе

---

**Двигатели:** 2

**Производитель:** Mercruiser

**Модель:** 6.2 MPI Horizon FWC

**Тип двигателя:** Inboard

**Тип топлива:** Gas

---

# ПОДРОБНОЕ ОПИСАНИЕ

---

## Vessel Walk Through

---

Above deck, the Cruisers 320 Express features a triple-wide helm seat for maximum cruising comfort as well as a walk-through windshield allowing for easy fore deck access. What's more, a fully concealed anchor locker eliminates the toe-stubbing often associated with foredeck chores. Further aft, she offers fore- and aft-facing cockpit seating and a twin convertible cockpit table/sun lounge, perfect for catching afternoon rays. This well-thought-out cockpit arrangement also includes a cockpit shower and an available ice maker, should a delightful summer day call for entertaining on the water. Beneath her sleek express exterior, the 320 achieves an impressive "family room" feel with an airy salon, lovely detailing and elegant appointments. She offers wide-open living space from the forward stateroom to the comfortable aft settee, and she offers more headroom than any boat in her class. Three large ventilating skylights bathe the interior with plenty of natural light. The large forward stateroom includes a generous double berth, ample storage space and a privacy curtain. A fully equipped galley, located to port, offers all the necessary amenities, such as an electric stove, large refrigerator and microwave oven. Across from the galley lies a crescent-shaped dinette, which can be converted into a berth for extra overnight guests. The aft settee also easily converts to a double berth, and a privacy curtain offers an extra measure of convenience. As an additional liveaboard luxury, the 320 features a roomy head, unsurpassed in this size class, with full standing headroom.

## Main Cabin

---

Spacious main cabin with dinette that converts to additional berth; wood dinette table

## Galley

---

Well-designed galley with molded sink with faucet with hot/cold water; sink cover; Princess electric stove; Black & Decker coffee maker; Tappan microwave; Tundra 12v refrigerator; hot water heater; galley cabinets and drawers; overhead light.

## Forward Cabin

---

Beautiful forward cabin with color coordinated upholstery and throw pillow; reading lights; mirrored headboard; hanging locker; storage compartments; Flat screen Insignia television with DVD player (Swivels from Forward Stateroom to Salon)

## Aft Cabin

---

Spacious aft cabin with upholstered sofa that converts to additional berth; hanging locker;

storage compartments; reading lights

---

## Marine Bathroom

---

Private enclosed **Vacuflush head** with locking door and standing headroom and a separate shower; holding tank; Tank Watch waste level indicator; sink and shower with hot/cold water; fan; shower curtain; storage compartments; overhead light

---

## Inside Equipment

---

- 12000 BTU Air Conditioning w/Heat
- Vacuflush Marine head
- Microwave Oven
- Hot water
- Battery charger
- Refrigerator
- Flatscreen TV (Which swivels from the main salon to the forward staroom) with DVD player

---

## Helm & Cockpit

---

Spacious helm and cockpit with full backlit instrumentation at the helm; triple wide bench helm seat with flip up bolsters; companion seat lounge; spacious aft cockpit seating area with cockpit table; cockpit wet bar with sink, faucet; cup holders; stereo speakers; cockpit carpet; storage compartments

---

## Electronics

---

- Raymarine C120 Color Chartplotter /GPS
- Depthsounder
- Compass - Plastimo
- Stereo with 6 disc CD player with helm remote
- Raymarine 215 VHF

---

## Electrical Equipment

---

- Duel 30 AMP Shore Power inlet with White Cords
- Generator - Kohler 5.0 kW

---

## Outside Equipment/Extras

---



- Windlass
- Remote Spotlight
- Bow Sunpad
- Walkthrough Windsheild
- Cockpit cushions
- Cockpit table
- Extra-Large Swim Platform w/ Ladder
- Hot and Cold Cockpit shower

---

## Covers

---

- Bimini Top
- Cockpit Cover

---

## Equipment

---

Bennett trim tabs; swim platform with swim ladder; dockside water; cockpit shower with hot/cold water; battery charger; Fireboy automatic fire extinguishing system; batteries with switches; port & starboard windshield wipers; remote spotlight; television connector; fixed anchor light; life preservers; fire extinguishers; shore power cords; Danforth style anchor; fenders; extended swim platform

---

## Exclusions

---

Owner's personal possessions

---

## Исключения

---

При продаже яхты исключаются личные вещи владельца.

---

## Отказ от ответственности

---

Компания предоставляет описание судна или яхты добросовестно, но не может гарантировать точность этой информации, а также не ручается за техническое состояние. Покупатель должен проинструктировать своих агентов или оценщиков исследовать представленную информацию более подробно, по собственному желанию. Продажа судна или яхты, изменение цены или снятие с продажи будет происходить без предварительного уведомления.

# ФОТОГРАФИИ

Salon



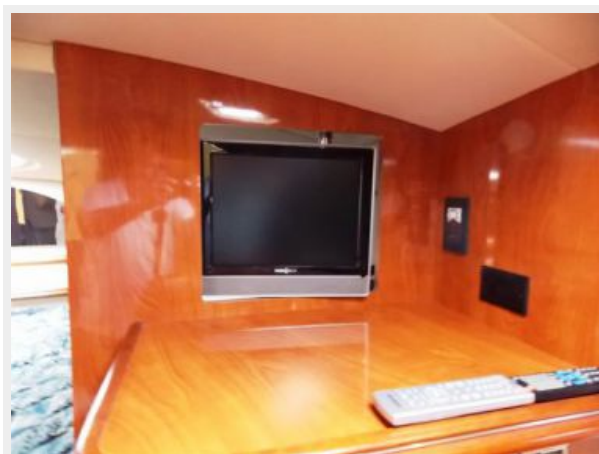
Salon



Salon/Dinette



Flatscreen/TV-Pivots



Midcabin Couch- Bed



Galley



**Galley**



**Main Distribution Panel**



**Forward Berth**



**Large Berth**



**Vacuflush Head**



**Main Helm**



### Helm Seat w/ Thigh Rise Bolster



### Dashboard



### VHF



### Raymarine C120



### Engine Room



### Port Engine



**Starboard Engine**



**Walkthru Windshield**



**Bow Pad**



**Windlass and Spotlight**



**Cockpit**



**Cockpit**



**Aft Cockpit**



**Cockpit**



**Cockpit Cover**



**Transom**



**Large Platform**



**Forward Port Quarter**



**Port Profile**



**Port Profile**



**Aft Port Quarter**



**Forward Starboard Quarter**



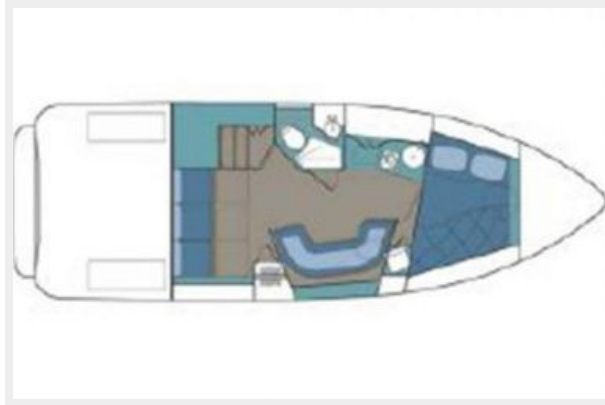
**Aft Starboard Quarter**



**Manufacturer Provided Image**



## Layout





# КОНТАКТЫ

---

Андрей Шестаков (Andrey Shestakov) – ведущий яхтенный брокер отдела продаж яхт и судов компании Shestakov Yacht Sales Inc. Официальный представитель Shestakov Yacht Sales Inc. для русскоговорящих клиентов в центральном офисе компании в Майами/Форт Лодердейл/Флорида/США.

## Контактная информация

---

Email: [andrey@shestakovyachtsales.com](mailto:andrey@shestakovyachtsales.com)

Web: [shestakovyachtsales.com](http://shestakovyachtsales.com)

## Телефоны

---

Краснодарский край: **+7(918)465-66-44**

США, Майами, Флорида: **+1(954)274-4435**

## Время работы

---

Понедельник – Суббота: **9:00 - 21:00**  
EDT

Воскресенье: **Закрето**

## Адрес

---



Harbour Towne Marina, 850 NE 3rd St,  
STE 213, Dania, FL 33004