

CHOINI — HARGRAVE



Судостроитель: HARGRAVE

Год постройки: 2001

Модель: Моторная яхта

Цена: ЦЕНА ЯХТЫ ПО ЗАПРОСУ

Местонахождение: United States

Длина общая: 82' 0" (24.99m)

Ширина: 20' 0" (6.10m)

Мин. осадка: 5' 0" (1.52m)

Макс. осадка: 5' 2" (1.57m)

Крейс. скорость: 18 Kts. (21 MPH)

Макс. скорость: 22 Kts. (25 MPH)

Купить **Choini — HARGRAVE** а также выбрать подходящую вам яхту из нашего каталога яхт вам поможет опытный яхтенный брокер Андрей Шестаков. На сегодняшний день компания **Shestakov Yacht Sales Inc.** имеет большое количество яхт в собственном списке продаж, а также тесно сотрудничает со всеми крупными яхтенными производителями по всему миру.

Для того чтобы купить яхту **Choini — HARGRAVE** а также проконсультироваться по любому вопросу связанному с покупкой, продажей, чартером яхт позвоните по телефону **+7(918)465-66-44**.

ОГЛАВЛЕНИЕ

ОГЛАВЛЕНИЕ	2
ХАРАКТЕРИСТИКИ	4
Основная информация	4
Размеры	4
Скорость, вместимость и масса	4
Размещение	4
Корпус и палуба	4
Информация о двигателе	5
ПОДРОБНОЕ ОПИСАНИЕ	6
Detailed Specifications	6
Disclaimer	18
Исключения	19
Отказ от ответственности	19
ФОТОГРАФИИ	20
Cockpit	20
Stern View	20
Aft Dining	20
Aft Deck	20
Salon	20
Salon	20
Galley	21
Pilot house	21
Master Stateroom	21
Master Stateroom	21
Master Head	21
Guest Twin Stateroom	21
Guest Head	22
VIP Stateroom	22

VIP Head	22
Stairway to Flybridge	22
Helm Station	22
Flybridge	22
Engine Room	23
Engine Room	23
LAYOUT	23
КОНТАКТЫ	24
Контактная информация	24
Телефоны	24
Время работы	24
Адрес	24

ХАРАКТЕРИСТИКИ

Основная информация

Тип судна: Моторная яхта

Подкатегория: Flybridge

Модельный год: 2001

Год постройки: 2001

Страна: United States

Размеры

Длина общая: 82' 0" (24.99m)

Ширина: 20' 0" (6.10m)

Мин. осадка: 5' 0" (1.52m)

Макс. осадка: 5' 2" (1.57m)

Скорость, вместимость и масса

Крейс. скорость: 18 Kts. (21 MPH)

Макс. скорость: 22 Kts. (25 MPH)

Вместимость воды: 600 Gallons

Объем топливного бака: 3000 Gallons

Размещение

Всего кают: 3

Всего коек: 4

Спальные места: 6

Всего ком. состава: 4

Каюты экипажа: 2

Койки экипажа: 3

Спальных мест экипажа: 4

Комм. состав экипажа: 1

Корпус и палуба

Материал корпуса: Fiberglass

Материал палубы: Teak

Информация о двигателе

Двигатели: 2

Производитель: Caterpillar

Тип двигателя: Inboard

Тип топлива: Diesel

ПОДРОБНОЕ ОПИСАНИЕ

Detailed Specifications

BASIC DETAILS

Name	CHOINI	
Type	Motor Yacht Flybridge	
Model	Capri	
Builder	Hargrave	
Year	2001	
Hull No	HCY82621H102	
LOA	82'00"	(24.9m)
Beam Overall	20'00"	(6.1m)
Draft (Half Load)	5'00"	(1.5m)
Draft (Full Load)	5'20"	(1.6m)
Hull Material	Fiberglass	
Superstructure		
Decks		

Flag	US
Classification	
MCA	Yes
Main Engines	2x Caterpillar Diesel 3412 1400 HP each
Min/Max Speed	22 kts /18kts
Engine Hours	Port Main Engine – 2474 Hours Starboard Main Engine – 2471 Hours
Fuel	3,000 Gal. (11,356 L)
Water Capacity	600 Gal (2,271 L)
Range	
Stabilizers	NAID Model # 254 w 42" x 32" Fins
Displacement (Fully Loaded)	
Gross Tonnage	122 gross tons
Guest Accommodations	3

Sleeps	6
Heads	4
Crew Accommodation	4

ACCOMMODATIONS

LOWER DECK:

Master Stateroom:

The Master Stateroom is accessed by an oversized gradual spiral staircase located on the starboard side of the Salon. Aft the landing is the entrance into the Master Stateroom. The Master Stateroom has a full king-size bed with night stands. Accenting the bed is an overhead soffit, which has been custom built to match the shape of the bed. The soffit is built from cherry, and recessed with smoke mirror panels above. There is a settee for lounging located on the port side. Proceeding aft is the master head. The head is built with marble counter tops, and the walls are covered in gold leaf wallpaper. The shower is also a Jacuzzi tub with custom marble to match the vanity top. On the starboard side there are dresser drawers and a full size walk-in closet. The Master Stateroom is equipped with a TV that is located behind a sliding cherry tamber door set up for viewing while in bed or seated on the settee.

Port Guest Stateroom:

The port Guest Stateroom is equipped with a VIP berth. The

closet in this stateroom has been increased in size to handle the guest's needs. The TV is located to port in a cherry tamber cabinet and door. This room is also equipped with a Sony stereo and CD player for personal enjoyment. Careful consideration was given to the layout and design of the head in order to increase the shower floor space and to give the room an open feeling.

Starboard Guest Stateroom:

The Starboard Guest Stateroom is equipped with twin berths. The actual beds are a real single bed size, not tapered or shortened. There is a custom cherry cabinet that houses the TV/VCR.

This stateroom's head was designed to serve as a day head as well as the starboard stateroom's head. A curved shape door has been installed in the foyer to allow for easy access to the head while underway.

Crew Quarters:

The Crew Quarters are designed for a crew of four. The port crew cabin is set up with a full size bed that can easily accommodate a couple or the captain's quarters. There is ample storage in drawers below the bed and a closet locker for the dress whites.

The starboard crew stateroom is layed out as over/under bunks. There are drawers installed under the bunk and a hanging locker as well.

The crew lounge is just outside the staterooms and has a curved L-shaped Garrett leather settee with storage below. As you can tell from the Garrett leather, there has been no expense spared even in the crew area.

The custom Corian crew dining table is beautiful, which has a cobalt ¼” inlay in the bullnose. The crew area has a full entertainment center equipped with TV/VCR, Stereo, and a CD player for their enjoyment.

Extra storage has been added in the crew lounge area. A double door locker has been built on the aft bulkhead of the crew lounge, which can also be a closet for additional hanging space, guest’s luggage or extra food storage.

MAIN DECK:

The entrance from the aft deck is a Stainless Steel sliding door that opens to the main salon. Located to port there is an L-shaped sofa. This sofa was designed for easy access to the storage located beneath the seats. There is ample seating for six people, and the sofa has been built with the 24” seat depth and curves which offer back support for comfortable casual seating. The custom-built cocktail table is made of a high gloss cherry frame with a 1” camphor burl inlay and a Lucite drop in center. When looking down through the Lucite an open cherry three-diamond design has been created to showcase the craftsmanship found throughout this yacht.

On the starboard side there are two swivel barrel chairs covered in Ivory fabric. Located between these two chairs is a custom built-in-table with storage below, making this the perfect spot to curl up with a good book and a cold drink.

The dining area is located forward in the Main Salon. The dining table is great for either formal dining or a casual lobster feast. The custom table is built with cherry wood in high gloss with three 2” camphor burl diamond inlays, along with a ½” camphor burl edge inlay. A beautiful settee finished in Garrett leather curves around the table for comfortable seating, plus there are three custom Lambert dining chairs.

Separating the aft seating from the dining area is a 32” high-gloss china cabinet to port that is built from cherry with a

beautiful cross-grain pattern.

To match the cabinet to starboard, a custom cherry cabinet with the same cross-grain pattern was built for deep storage this also houses the 42" Sony flat screen TV with the hi/lo custom built Inca lift.

The entertainment center is located to aft on the starboard side and housed the Yamaha tuner, VCR, Tape, and CD player. The Sony 42" flat screen TV will play in the Main Salon even through the stereo system for the surround sound affect can be played in the Galley and on the aft deck with a touch of the selector switch.

GALLEY:

The galley is located forward, walking through the Salon. Extra attention to the finer details has gone into the design and layout of this area. Most Galleys on yachts of this size are not designed with a real cook in mind. The preparation space on the counter top is as large as one you would find on a 100' yacht. Sub-zero, 700 series, freezer doors have been installed on the back bulkhead of the Galley to help achieve the large counter top space. To carry the high-gloss cherry wood design throughout, the shipyard custom-built cherry face covers for the sub-zero. The large Sub-Zero refrigerator is stainless steel and the capacity is 22 cubic feet. The sub-zero design allows for push button temperature control zones. The aft bulkhead wall showcases a custom designed tiled wall mural depicting a chart of the Bahamian islands. This work of art is simply stunning.

To starboard in the Galley is a GE Profile wine cooler which holds 25 wine bottles and ample storage has been designed above it to make a pantry.

Walking forward of the Galley and to starboard is a raised banquette, a great area for a casual breakfast or quick snack. The table was built to allow for easy access to the seating by installing a swivel mount design base. The table is a high gloss cherry with a custom compass rose design inlaid in the center. The banquette has been raised 8" from the floor to allow for visibility out of the windows. By raising the settee, a large

drawer has been custom built below for storage.

FLYBRIDGE

The Flybridge is the icing on the cake. The layout has been designed for the true cruiser in mind. There is a helm forward with two chairs for the owner and mate.

Behind the helm seats is a custom-built Corian bar top to house the U-line Ice maker, refrigerator, and sink. The counter also double up as a buffet counter top for informal entertaining.

Port side of the helm is a raised two seat companion settee, offering excellent viewing while under way. The secret of this design is that the two seats flip up and allow for deep storage for large containers or extra cases of soda and beer.

Aft of the companion seating is a U-shaped settee. For entertaining there is a large fiberglass table that will accommodate alfresco dining and entertaining.

Across from the U-shaped seating is a large L-shaped settee, which is a great area if you do day cruises with a lot of friends, as there is plenty of extra seating. Please note that there is storage under all the seating.

Above it all is a custom built fiberglass hard top with built lights that really set the mood for the evening cocktail party or casual dining. Sun bathers will enjoy the sun pad/chaise lounge, which allows for up to five people.

CONSTRUCTION

Hull

Fiberglass

Decks

Teak on main
exterior

CAPACITIES

Tonnage	122 gross tons; 98 net tons; displacement tons	
Fuel Capacity	3000 US Gallons	(11356.24 liters)
Water Capacity	600 US Gallons	(2271.25 liters)
Speed		
Maximum	22 kts	
Cruising	18 kts	

MAIN MACHINERY

Main Engines	Caterpillar 2x Diesel
Engine Controls	Twin Lever Hynautic
Shafting	Stainless Steel , 3" diameter
Propellers	5 Blade Nibral 38" x 32.5"
Generators:	Phaser 2012 4 Cylinder 1800 RPM (total) 240 Volt 40 Kw each
Outboard of Port Engine	8570 hours
Outboard of Starboard engine	9498 hours

ANCILLIARY MACHINERY

Air Conditioning	Cruise Air
Bow Thruster	NAIAD “ HYDRAULIC” Single 7 Blade Prop
Fresh Water Filters	

Fresh Water Heaters

General Electric
40 Gallon

Fresh Water Maker

(2) Stainless
Steel 518
Gallons

Fuel Separator

Pumps

Mechanical +
Electrical
Transfer &
Priming Pumps

Fuel Filters

Twin Racor
Bowls in-line w
Bowl on
Engines

Stabilizers

NAIAD MODEL
254 with 42" x
32" Fins

Steering System

Twin Station
Hydraulic

NAVIGATION SYSTEMS & EQUIPMENT

Communication Systems

SATcom

KVH Trac
Phone

Telephone System

SSB

ICOM IC-M710

VHF Fixed

ICOM IC –M

VHF Handheld

Uniden + West
Marine

Cellular Phone System

Owner's
portable

Navigation Systems

Lower Helm
Flybridge

Radar

Furuno 72 Mile

Magnetic Compass

Ritchie 6" – 4"
Danforth
SimradIS15
Digital

Auto Pilot

Simrad AP20

Depth Sounder

Raytheon ST60
Raytheon ST60

GPS

Furuno GP31
GPS Furuno GP

	31 GPS
GPS	Garmin 5212 Garmin 5212
Chart Plotter	Garmin 5212 West Marine
Speed Indicator	In GPS + Raytheon ST60 Multi In GPS

GALLEY & LAUNDRY EQUIPMENT

Main Galley Equipment

Cooking Equipment	General Electric Convection
BBQ	Jenn Air on Flybridge
Microwave	General Electric
Refrigeration/Freezer	Sub-Zero Refrigerator + 2 Sub-Zero Drawers

Dishwasher

General Electric

Refrigeration/Freezer

Cockpit Freezer
– Domestic
chest in
Lazarette

U-Line Flybridge
Refrigerator

U- Line
Flybridge
Icemaker

U-Line Aft Deck
Refrigerator

U-Line Aft Deck
Icemaker

Wine Cooler

GE Profile 700
series

Washer/Dryer

General Electric
stack type

Disclaimer

All speeds, capacities, consumption, hours, measurements, etc. are approximate or estimated.

Specifications provided for information only as particulars herein obtained are from sources available but are not guaranteed. Remarks and other statements may be personal opinions and may not be relied upon for purchase. Buyer should instruct his agent/supervisor to check all details for accuracy. Offered subject to prior sale, price/inventory change, or withdrawal from market without notice.

Исключения

При продаже яхты исключаются личные вещи владельца.

Отказ от ответственности

Компания предоставляет описание судна или яхты добросовестно, но не может гарантировать точность этой информации, а также не ручается за техническое состояние. Покупатель должен проинструктировать своих агентов или оценщиков исследовать представленную информацию более подробно, по собственному желанию. Продажа судна или яхты, изменение цены или снятие с продажи будет происходить без предварительного уведомления.

ФОТОГРАФИИ

Stern View



Cockpit



Aft Dining



Aft Deck



Salon



Salon



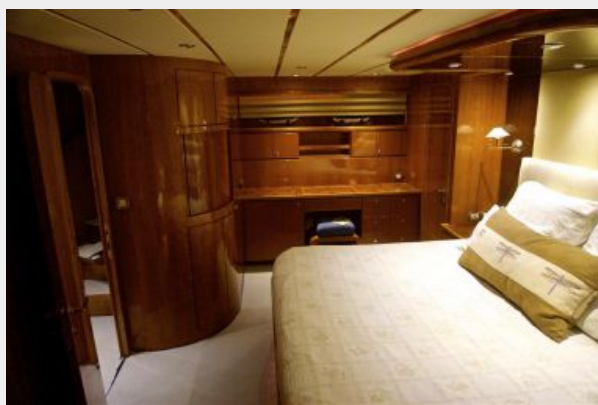
Galley



Pilot house



Master Stateroom



Master Stateroom



Master Head



Guest Twin Stateroom



Guest Head



VIP Stateroom



VIP Head



Stairway to Flybridge



Helm Station



Flybridge



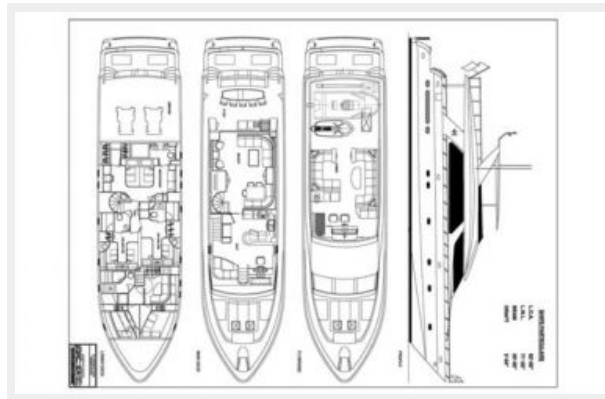
Engine Room



Engine Room



LAYOUT



КОНТАКТЫ

Андрей Шестаков (Andrey Shestakov) – ведущий яхтенный брокер отдела продаж яхт и судов компании Shestakov Yacht Sales Inc. Официальный представитель Shestakov Yacht Sales Inc. для русскоговорящих клиентов в центральном офисе компании в Майами/Форт Лодердейл/Флорида/США.

Контактная информация

Email: andrey@shestakovyachtsales.com

Web: shestakovyachtsales.com

Телефоны

Краснодарский край: **+7(918)465-66-44**

США, Майами, Флорида: **+1(954)274-4435**

Время работы

Понедельник – Суббота: **9:00 - 21:00**
EDT

Воскресенье: **Закрито**

Адрес



Harbour Towne Marina, 850 NE 3rd St,
STE 213, Dania, FL 33004