

## 55-419 — VIKING



**Builder:** [VIKING](#)

**LOA:** 55' 0" (16.76m)

**Year Built:** 2014

**Max Draft:** 5' 1" (1.55m)

**Model:** Sport Fisherman

**Price:** PRICE ON APPLICATION

**Location:** United States

Our experienced yacht broker, Andrey Shestakov, will help you choose and buy a yacht that best suits your needs **55-419 — VIKING** from our catalogue. Presently, at Shestakov Yacht Sales Inc., we have a wide variety of yachts available on our sale's list. We also work in close contact with all the big yacht manufacturers from all over the world.

If you would like to buy a yacht **55-419 — VIKING** or would like help answering any questions concerning purchasing, selling or chartering a yacht, please call **+1(954)274-4435**

# TABLE OF CONTENTS

TABLE OF CONTENTS	2
SPECIFICATIONS	5
Overview	5
Basic Information	5
Dimensions	5
Speed, Capacities and Weight	5
Accommodations	6
Hull and Deck Information	6
Engine Information	6
DETAILED INFORMATION	7
Manufacturer Provided Description	7
Dealer Selected Options	8
Exclusions	12
Disclaimer	12
PHOTOS	13
Salon	13
Salon	13
Salon	13
Salon	13
Salon	13
Salon	13
Salon	14
Salon	14
Galley	14
Galley	14
Galley	15
Master Stateroom	15
Master Stateroom	15

Master Stateroom	15
Master Stateroom	16
Master Head	16
Forward Stateroom	16
Forward Stateroom	16
Guest Stateroom	17
Guest Stateroom	17
Guest Stateroom	17
Guest Head	17
Guest Head	18
Laundry Center	18
Flybridge	18
Flybridge	18
Flybridge	19
Flybridge	19
Flybridge	19
Flybridge	19
Flybridge	20
Flybridge	20
Flybridge	20
Cockpit	20
Cockpit	21
Cockpit	21
Cockpit	21
Cockpit	21
Engine Room	21
Engine Room	21
Engine Room	22
Engine Room	22

---

Engine Room	22
Engine Room	22
Engine Room	23
Engine Room	23
Engine Room	23
Engine Room	23
55-419	24
55-419	24
55-419	24
55-419	24
55-419	25
CONTACTS	26
Contact details	26
Telephones	26
Office hours	26
Address	26

---

# SPECIFICATIONS

---

## Overview

---

In 1996, Viking introduced its first 55 Convertible at the Ft. Lauderdale Boat Show. This model broke new ground with style and out gunned the competition not only with its performance but with its movie star popularity that trampled the competition in sales. Over the next five years, Viking would build over 150 55 Convertibles. No other boat by any manufacturer in this size range would even come close.

Until Now.

And this new marauder of the seas is none other than our 2013 55 Convertible. From bow to stern and every foot in between, this boat gleams with poise and perfection. It shares so many features of its stable mates that it is the obvious heir apparent to the Viking throne for superiority of the seas.

## Basic Information

---

**Category:** Sport Fisherman

**Sub Category:** Convertible

**Model Year:** 2015

**Year Built:** 2014

**Country:** United States

## Dimensions

---

**LOA:** 55' 0" (16.76m)

**Max Draft:** 5' 1" (1.55m)

**MFG Length:** 60' 3" (18.36m)

## Speed, Capacities and Weight

---

**Displacement:** 77700 Pounds

**Water Capacity:** 225 Gallons

**Holding Tank:** 100 Gallons

**Fuel Capacity:** 1400 Gallons

---

## Accommodations

---

**Total Cabins:** 3

**Total Heads:** 2

---

## Hull and Deck Information

---

**Hull Material:** Fiberglass

**Hull Color:** White

---

## Engine Information

---

**Engines:** 2

**Manufacturer:** MAN

**Model:** V12 1550 CRM

**Engine Type:** Inboard

**Fuel Type:** Diesel

---

# DETAILED INFORMATION

---

## Manufacturer Provided Description

---

### The Viking 55 Convertible

Over the past 48 years, the Viking Yacht Company has introduced numerous ground breaking designs that have paved the waterfront with excellence in design and performance.

Our newest model, the 55 Convertible premieres this summer and will be a focal point for Viking during the upcoming boat shows. Like many new Vikings, the new 55 is a blue-water overachiever, which says a lot about any new model. But in this case, it means even more because of the big boat shoes it has been designed to fill and the fact that several 55s have already been spoken for in what is arguably a difficult economy.

In 1996, Viking introduced its first 55 Convertible at the Ft. Lauderdale Boat Show. This model broke new ground with style and out gunned the competition not only with its performance but with its movie star popularity that trampled the competition in sales. Over the next five years, Viking would build over 150 55 Convertibles. No other boat by any manufacturer in this size range would even come close.

### Until Now.

And this new marauder of the seas is none other than our 2013 55 Convertible. From bow to stern and every foot in between, this boat gleams with poise and perfection. It shares so many features of its stable mates that it is the obvious heir apparent to the Viking throne for superiority of the seas.

Performance wise, the 55 Convertible with a pair of 1,500 mhp MAN V12 CRM diesels eagerly rushes to top speeds in excess of 40 knots. Like to fish offshore, but sleep late? This ride is for you.

The cockpit and flying bridge have been designed around the experiences of a thousand fishing tournaments, but you don't have to be a hard core blue water angler to appreciate the built in conveniences and amenities like a center console helm station, or observation mezzanine in the split level cockpit.

Accommodations include an inviting layout with three staterooms and two heads, a laundry center and a choice of salon floor plans featuring an island or peninsula style galley with under counter refrigeration. You can choose high gloss or satin finished teak joinery, along with a multitude of interior furnishings to customize it to your specific needs and wants.

But to really appreciate what this new model can do, we invite you to contact your Viking dealer and arrange a sea trial. We will then talk more when you get back to the dock. We will just assume that smile is your game face.

## Dealer Selected Options

---

FWD SR LAYOUT: VIP CROSSOVER FORWARD  
 BILGE: AWLGRIP ANCHOR LOCKER  
 BILGE: AWLGRIP FORWARD BILGE AND ANCHOR LOCKER  
 BILGE: INSTALL MAGNETIC SWITCHES FOR ALL BILGE LIGHTS  
 COCKPIT CUSTOM: TEAK SOLE AND MEZZANINE - DONE BY OUTSIDE VENDOR  
 COCKPIT CUSTOM: INSTALL STAINLESS BAIT TRAYS IN LOWER MEZZANINE BOX  
 COCKPIT CUSTOM: S & I RELEASE MARINE TRILLION SERIES FIGHTING CHAIR  
 COCKPIT CUSTOM: S & I THREADED COCKPIT SCUPPERS IPO STANDARD  
 COCKPIT CUSTOM: S & I TRI COLOR LIGHTS IN COCKPIT OVERHANG:  
 RED/WHITE/BLUE  
 COCKPIT CUSTOM: S & I TWO 12V OUTLETS FORWARD UNDER COAMING ONE EACH  
 SIDE  
 COCKPIT: AWLGRIP LAZARETTE  
 COCKPIT: DELETE HAUNCH HAND RAILS  
 COCKPIT: ICE MACHINE WITH DISCHARGE INTO COCKPIT SOLE BOX  
 COCKPIT: MEZZANINE COCKPIT  
 COCKPIT: PLUMB TRANSOM BOX AS LIVE WELL WITHOUT WINDOW AND LIGHT  
 COCKPIT: REFRIGERATED COCKPIT STEP BOX  
 COCKPIT: SEAWATER SUPPLY AND FITTING FOR ADDITIONAL ON-DECK LIVE WELL  
 COCKPIT: SHIP ABOARD TRANSOM SWIM STEPS AT CUSTOMER REQUEST  
 COCKPIT: TRANSOM COAMING WITH GATE AND FISH BOX  
 COCKPIT: TWO 24V OUTLETS FORWARD UNDER COAMING, ONE EACH SIDE (20 AMP  
 MAX)  
 COCKPIT: Y-VALVE FOR FRESH AND SALTWATER WASHDOWNS IN COCKPIT  
 COMPANIONWAY, COSTA, CANVAS CARPET RUNNER WITH STEP COVERS  
 CP: BLUE LED ROPE LIGHTING UNDER COCKPIT COAMING  
 CP: DIVIDERS IN FREEZER IN MEZZANINE SEAT  
 CP: PROVIDE FREEZER STORAGE IN MEZZANINE SEAT  
 CP: REFRIGERATE PORT MEZZANINE UNDERMOUNTED STEP BOX  
 CP: SPLIT LID FOR COCKPIT FISH BOX  
 CP: STORAGE LOCKERS UNDER PORT AND STARBOARD COAMINGS  
 DECK/EXT SALON FORWARD WINDOW MASK - NO WARRANTY ON COSMETIC FINISH  
 DECK/EXT: ANCHOR BRACKET IN ANCHOR LOCKER (WITH NO PULPIT)  
 DECK/EXT: DELETE BOW PULPIT & INSTALL BOW CLEATS FORE & AFT  
 DECK/EXT: FRESH WATER WASHDOWN AT BOW INSIDE ANCHOR LOCKER  
 DECK/EXT: INSTALL SS GAS SPRINGS FOR ANCHOR LOCKER HATCH



DECK/EXT: S&I RECESSED TRIM TAB COVERS  
DECK/EXT: SIDE MOUNTED HANDRAILS THAT FOLLOW TOP OF SALON WINDOW  
DECOR ITEM: BRIDGE CUSHIONS IN ULTRALEATHER BRISA DISTRESSED OUTDOOR BUCKSKIN

DECOR ITEM: CUSTOM DECOR CHARGE

DECOR ITEM: MEZZANINE CUSHIONS & DRINK BOLSTER IN ULTRALEATHER BRISA BUCKSKIN

DECOR ITEM; BARSTOOLS WITHOUT BACKS (2) IN MAJILITE LEGACY PEARL

DECOR: ACCESSORY KIT

DECOR: BRUSHED NICKEL COVERPLATES FOR SWITCHES & RECEPTACLES THROUGHOUT

DECOR: BRUSHED NICKEL HARDWARE THROUGHOUT

DECOR: CARPET THROUGHOUT; FABRICA - RIVER SONG LAUREL

DECOR: CUSTOM HEADLINER MATERIAL THROUGHOUT - MOCCASIN CHAMOIS

DECOR: CUSTOM WALLPAPER INSTALLATION:

DECOR: CUSTOM WALLPAPER MATERIAL:

DECOR: GALLEY ACCESSORY KIT

DECOR: LED INTERIOR LIGHTS THROUGHOUT

DECOR: PRESTIGE DECOR

DECOR: SALON DOOR TYPE CATCHES ON STATEROOM DOORS

DECOR: SATIN NICKEL INTERIOR LIGHT TRIM THROUGHOUT

DECOR: SOFA, UPGRADED "DEWBERRY STYLE" IN ULTRALEATHER DEEP BRONZE (NO ARM)

DECOR: WRAPPED HATCH CARPET INSTALLATION

DELIVERY: WATER DELIVERY KIT W/TOOL SET

DINETEE: DIMMER ON OVERHEAD LED LIGHTS

DINETTE: DINETTE TABLE TO BE TEAK WITH TEAK PEDESTAL

ENG RM: 110V OUTLET ON AFT BULKHEAD AT ENTRANCEWAY

ENG RM: AWLGRIP BRASS THRU-HULLS & SEA STRAINERS IN ENGINE ROOM & FWD BILGES

ENG RM: FUEL FILTERS SNOW WHITE

ENG RM: FUEL PRIMING PUMPS 24V

ENG RM: GENERATOR GAS-WATER SEPARATOR FOR STD GENERATOR

ENG RM: INSTALL BACKUP PUMP FOR SEAWATER SYSTEM PLUMBED IN PARALLEL

ENG RM: PAINT ALL PUMPS EXCEPT FRESH WATER PUMP SNOW WHITE

ENG RM: RUN LINE FROM OIL CHANGE SYSTEM TO COCKPIT DOCKSIDE BOX

ENG RM: S&I 700 GPD WATERMAKER WITH AUTO BACKFLUSH

FB: BOAT TO GET TOWER AFTER DELIVERY  
FB: BUELL AIR HORNS

FB: CUSTOM: INSTALL COMPASS IN RECESSED ELECTRONICS BOX IPO STD LOCATION

FB: CUSTOM: UPGRADE HELM CHAIRS TO BE RELEASE MARINE TRILLION SERIES

FB: CUSTOM: FLYBRIDGE CUSHIONS TO BE DONE IN ULTRALEATHER BUCKSKIN

FB: DRILL & TAP ELECTRONICS BOX LIDS FOR GAS SPRINGS

FB: ELECTRONIC SINGLE-LEVER CONTROLS FOR HELM POD

FB: ELECTRONIC TROLLING VALVES

FB: FRESH WATER OUTLET ON BRIDGE

FB: INSTALL BRIDGE FREEZER BOX

FB: INSTALL BRIDGE WITHOUT EXPOSED FASTENERS

FB: INSTALL REMOVABLE FLYBRIDGE JUMPSEAT BACKREST

FB: PUSH BUTTON CATCHES FOR ELECTRONICS BOXES

FB: RECESSED ELECTRONICS BOXES

FB: REFRIGERATE BRIDGE DRINK BOX

FB: S&I RELEASE TEAK HELM POD

FB: SINGLE LEVER CONTROL HANDLES WITH BOW THRUSTER BUTTON IN HANDLES

FB: VHF RADIO ICOM-604

FB: ZF ENGINE CONTROLS

FSH: FAUCET TO BE SATIN NICKEL

FSH: SHOWER FIXTURES TO BE SATIN NICKEL

FSH: TOWEL BARS AND RINGS TO BE BRUSHED NICKEL

FSR HEAD: AMTICO FLOORING - WILD WALNUT STRAIGHT PLANK, 3" X 36"

FSR HEAD: MIRROR AROUND UPPER VANITY INSERT

FSR HEAD: S&I BRUSHED ALUMINUM SHOWER DOOR

FSR HEAD: TEAK FACE ON LOWER VANITY

FSR: DIMMER ON OVERHEAD LED LIGHTS

FSR: MATTRESS VIKING SLUMBER #6

GALLEY: 110V OUTLET NEXT TO SWITCH ON BOTTOM OF UPPER CABINET ABOVE SINK

GALLEY: 3-BURNER RECESSED RANGE

GALLEY: CUSTOM AMTICO FLOORING IN GALLEY - WILD WALNUT STRAIGHT PLANK, 3" X 36"

GALLEY: FAUCET TO BE SATIN NICKEL

GALLEY: GALLEY OVERHANG

GALLEY: MIRROR BACKSPLASH

GALLEY: UNDERCOUNTER REFRIGERATOR AND FREEZER DRAWERS

GENERAL: PROVIDE OVERBOARD DISCHARGE FOR ALL HEADS  
HEADS: SEALAND HEAD SYSTEM

HULL COLOR: SNOW WHITE

HULL: ADDITIONAL FUEL TANK FORWARD FOR A TOTAL OF (3) TANKS

HULL: BOTTOM PAINT VIKING BLUE

HULL: CUSTOM NON-METALLIC BOOT STRIPE IPO STANDARD SINGLE STRIPE

HULL: DC BOW THRUSTER

HULL: FIBERGLASS SIDE THRU-HULLS

HULL: OVAL EXHAUST OUTLETS (LINEAR EXHAUST)

HULL: PROP POCKETS TO REDUCE DRAFT

LAYOUT: GLOSS FINISH THROUGHOUT

LAYOUT: THREE STATEROOM LAYOUT

MECH: INSTALL TEE IN DOCKSIDE WATER MANIFOLD TO FILL WATER TANK FROM  
COCKPIT

MSH: FAUCET TO BE SATIN NICKEL

MSH: SHOWER FIXTURES TO BE SATIN NICKEL

MSH: TOWEL BARS & RINGS TO BE BRUSHED NICKEL

MSR CUSTOM: SCONCES

MSR HEAD: AMTICO FLOORING - WILD WALNUT STRAIGHT PLANK, 3" X 36"

MSR HEAD: MIRROR AROUND UPPER VANITY INSERT

MSR HEAD: TEAK FACE ON LOWER VANITY

MSR: DIMMER ON OVERHEAD LED LIGHTS

MSR: END TABLE TOPS TO BE TEAK

MSR: HARDWIRE NIGHT TABLE LAMPS

MSR: MATTRESS VIKING SLUMBER #8

MSR: S&I 26" FLAT SCREEN TV

PORT STRM: MATTRESS VIKING SLUMBER #6

POWER: MAN V12 1550 CRMN - 1550 MHP

PSR: DIMMER ON OVERHEAD LED LIGHTS

SALON: AMTICO FLOORING AT SALON ENTRY - WILD WALNUT STRAIGHT PLANK, 3" X  
36"

SALON: CARPET RUNNER, FULL, CANVAS

SALON: CLEAR ICEMAKER

SALON: COCKTAIL TABLE

SALON: DIMMERS FOR QUARTZ LIGHTS

SALON: ELECTRIC PANEL UP

SALON: INSTALL 46" FLAT SCREEN TELEVISION

---

SALON: S&I TEAK TRIM WHERE AMTICO FLOOR MEETS CARPET  
SALON: SALON DOOR WITH ELECTRIC DOOR OPENER  
SALON: SALON ENTERTAINMENT CENTER TOP: TEAK  
SALON: VALANCES TO BE TEAK  
SALON: VIKING HOME THEATER  
SALON: WIRE BOX TO BE TEAK

## Exclusions

---

Owner's personal belongings.

## Disclaimer

---

The Company offers the details of this vessel or yacht in good faith but cannot guarantee or warrant the accuracy of this information nor warrant the condition of the vessel. A buyer should instruct his representatives, agents, or his surveyors, to investigate such details as the buyer desires validated. This vessel or yacht is offered subject to prior sale, price change, or withdrawal without notice.

# PHOTOS

Salon



Salon



Salon



Salon



Salon



Salon



Salon



Salon



Galley



Galley



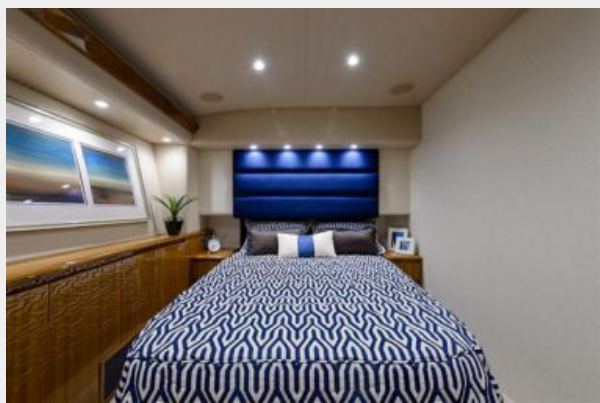
**Galley**



**Master Stateroom**



**Master Stateroom**



**Master Stateroom**



**Master Stateroom**



**Master Head**



**Forward Stateroom**



**Forward Stateroom**





**Guest Stateroom**



**Guest Stateroom**



**Guest Stateroom**



**Guest Head**



**Guest Head**



**Laundry Center**



**Flybridge**



**Flybridge**



**Flybridge**



**Flybridge**



**Flybridge**



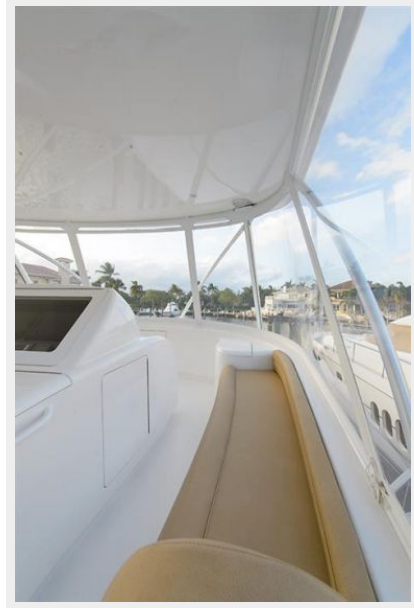
**Flybridge**



**Flybridge**



**Flybridge**



**Flybridge**



**Cockpit**



**Cockpit**



**Cockpit**



**Cockpit**



**Cockpit**



**Engine Room**



**Engine Room**



**Engine Room**



**Engine Room**



**Engine Room**



**Engine Room**



**Engine Room**



**Engine Room**



**Engine Room**



**Engine Room**



55-419



55-419



55-419

55-419





55-419



# CONTACTS

---

Andrey Shestakov, leading yacht broker of the sales department of Shestakov Yacht Sales Inc. Shestakov Yacht Sales Inc., the official representative of the Miami/Fort Lauderdale FL headquarters.

## Contact details

---

Email: [andrey@shestakovyachtsales.com](mailto:andrey@shestakovyachtsales.com)

Web: [shestakovyachtsales.com/en/](http://shestakovyachtsales.com/en/)

## Telephones

---

USA: +1(954)274-4435

## Office hours

---

Monday – Saturday: **9:00 - 21:00** EDT

Sunday: **closed**

## Address

---



Harbour Towne Marina, 850 NE 3rd St,  
STE 213, Dania, FL 33004