

55-419 — VIKING



Судостроитель: [VIKING](#)

Год постройки: 2014

Модель: Катер для спортивной рыбалки

Цена: ЦЕНА ЯХТЫ ПО ЗАПРОСУ

Местонахождение: United States

Длина общая: 55' 0" (16.76m)

Макс. осадка: 5' 1" (1.55m)

Купить 55-419 — VIKING а также выбрать подходящую вам яхту из нашего каталога яхт вам поможет опытный яхтенный брокер Андрей Шестаков. На сегодняшний день компания Shestakov Yacht Sales Inc. имеет большое количество яхт в собственном списке продаж, а также тесно сотрудничает со всеми крупными яхтенными производителями по всему миру.

Для того чтобы купить яхту 55-419 — VIKING а также проконсультироваться по любому вопросу связанному с покупкой, продажей, чартером яхт позвоните по телефону **+7(918)465-66-44**.

ОГЛАВЛЕНИЕ

ОГЛАВЛЕНИЕ	2
ХАРАКТЕРИСТИКИ	5
Обзор	5
Основная информация	5
Размеры	5
Скорость, вместимость и масса	5
Размещение	6
Корпус и палуба	6
Информация о двигателе	6
ПОДРОБНОЕ ОПИСАНИЕ	7
Manufacturer Provided Description	7
Dealer Selected Options	8
Исключения	12
Отказ от ответственности	12
ФОТОГРАФИИ	13
Salon	13
Salon	13
Salon	13
Salon	13
Salon	13
Salon	13
Salon	14
Salon	14
Galley	14
Galley	14
Galley	15
Master Stateroom	15
Master Stateroom	15

Master Stateroom	15
Master Stateroom	16
Master Head	16
Forward Stateroom	16
Forward Stateroom	16
Guest Stateroom	17
Guest Stateroom	17
Guest Stateroom	17
Guest Head	17
Guest Head	18
Laundry Center	18
Flybridge	18
Flybridge	18
Flybridge	19
Flybridge	19
Flybridge	19
Flybridge	19
Flybridge	20
Flybridge	20
Flybridge	20
Cockpit	20
Cockpit	21
Cockpit	21
Cockpit	21
Cockpit	21
Engine Room	21
Engine Room	21
Engine Room	22
Engine Room	22

Engine Room	22
Engine Room	22
Engine Room	23
Engine Room	23
Engine Room	23
Engine Room	23
55-419	24
55-419	24
55-419	24
55-419	24
55-419	25
КОНТАКТЫ	26
Контактная информация	26
Телефоны	26
Время работы	26
Адрес	26

ХАРАКТЕРИСТИКИ

Обзор

In 1996, Viking introduced its first 55 Convertible at the Ft. Lauderdale Boat Show. This model broke new ground with style and out gunned the competition not only with its performance but with its movie star popularity that trampled the competition in sales. Over the next five years, Viking would build over 150 55 Convertibles. No other boat by any manufacturer in this size range would even come close.

Until Now.

And this new marauder of the seas is none other than our 2013 55 Convertible. From bow to stern and every foot in between, this boat gleams with poise and perfection. It shares so many features of its stable mates that it is the obvious heir apparent to the Viking throne for superiority of the seas.

Основная информация

Тип судна: Катер для спортивной рыбалки

Подкатегория: Convertible

Модельный год: 2015

Год постройки: 2014

Страна: United States

Размеры

Длина общая: 55' 0" (16.76m)

Макс. осадка: 5' 1" (1.55m)

Длина привального бруса: 60' 3" (18.36m)

Скорость, вместимость и масса

Водоизмещение: 77700 Pounds

Вместимость воды: 225 Gallons

Вместимость сточного бака: 100 Gallons **Объем топливного бака:** 1400 Gallons

Размещение

Всего кают: 3

Всего ком. состава: 2

Корпус и палуба

Материал корпуса: Fiberglass

Цвет корпуса: White

Информация о двигателе

Двигатели: 2

Производитель: MAN

Модель: V12 1550 CRM

Тип двигателя: Inboard

Тип топлива: Diesel

ПОДРОБНОЕ ОПИСАНИЕ

Manufacturer Provided Description

The Viking 55 Convertible

Over the past 48 years, the Viking Yacht Company has introduced numerous ground breaking designs that have paved the waterfront with excellence in design and performance.

Our newest model, the 55 Convertible premieres this summer and will be a focal point for Viking during the upcoming boat shows. Like many new Vikings, the new 55 is a blue-water overachiever, which says a lot about any new model. But in this case, it means even more because of the big boat shoes it has been designed to fill and the fact that several 55s have already been spoken for in what is arguably a difficult economy.

In 1996, Viking introduced its first 55 Convertible at the Ft. Lauderdale Boat Show. This model broke new ground with style and out gunned the competition not only with its performance but with its movie star popularity that trampled the competition in sales. Over the next five years, Viking would build over 150 55 Convertibles. No other boat by any manufacturer in this size range would even come close.

Until Now.

And this new marauder of the seas is none other than our 2013 55 Convertible. From bow to stern and every foot in between, this boat gleams with poise and perfection. It shares so many features of its stable mates that it is the obvious heir apparent to the Viking throne for superiority of the seas.

Performance wise, the 55 Convertible with a pair of 1,500 mhp MAN V12 CRM diesels eagerly rushes to top speeds in excess of 40 knots. Like to fish offshore, but sleep late? This ride is for you.

The cockpit and flying bridge have been designed around the experiences of a thousand fishing tournaments, but you don't have to be a hard core blue water angler to appreciate the built in conveniences and amenities like a center console helm station, or observation mezzanine in the split level cockpit.

Accommodations include an inviting layout with three staterooms and two heads, a laundry center and a choice of salon floor plans featuring an island or peninsula style galley with under counter refrigeration. You can choose high gloss or satin finished teak joinery, along with a multitude of interior furnishings to customize it to your specific needs and wants.

But to really appreciate what this new model can do, we invite you to contact your Viking dealer and arrange a sea trial. We will then talk more when you get back to the dock. We will just assume that smile is your game face.

Dealer Selected Options

FWD SR LAYOUT: VIP CROSSOVER FORWARD

BILGE: AWLGRIP ANCHOR LOCKER

BILGE: AWLGRIP FORWARD BILGE AND ANCHOR LOCKER

BILGE: INSTALL MAGNETIC SWITCHES FOR ALL BILGE LIGHTS

COCKPIT CUSTOM: TEAK SOLE AND MEZZANINE - DONE BY OUTSIDE VENDOR

COCKPIT CUSTOM: INSTALL STAINLESS BAIT TRAYS IN LOWER MEZZANINE BOX

COCKPIT CUSTOM: S & I RELEASE MARINE TRILLION SERIES FIGHTING CHAIR

COCKPIT CUSTOM: S & I THREADED COCKPIT SCUPPERS IPO STANDARD

COCKPIT CUSTOM: S & I TRI COLOR LIGHTS IN COCKPIT OVERHANG:
RED/WHITE/BLUE

COCKPIT CUSTOM: S & I TWO 12V OUTLETS FORWARD UNDER COAMING ONE EACH
SIDE

COCKPIT: AWLGRIP LAZARETTE

COCKPIT: DELETE HAUNCH HAND RAILS

COCKPIT: ICE MACHINE WITH DISCHARGE INTO COCKPIT SOLE BOX

COCKPIT: MEZZANINE COCKPIT

COCKPIT: PLUMB TRANSOM BOX AS LIVE WELL WITHOUT WINDOW AND LIGHT

COCKPIT: REFRIGERATED COCKPIT STEP BOX

COCKPIT: SEAWATER SUPPLY AND FITTING FOR ADDITIONAL ON-DECK LIVE WELL

COCKPIT: SHIP ABOARD TRANSOM SWIM STEPS AT CUSTOMER REQUEST

COCKPIT: TRANSOM COAMING WITH GATE AND FISH BOX

COCKPIT: TWO 24V OUTLETS FORWARD UNDER COAMING, ONE EACH SIDE (20 AMP
MAX)

COCKPIT: Y-VALVE FOR FRESH AND SALTWATER WASHDOWNS IN COCKPIT

COMPANIONWAY, COSTA, CANVAS CARPET RUNNER WITH STEP COVERS

CP: BLUE LED ROPE LIGHTING UNDER COCKPIT COAMING

CP: DIVIDERS IN FREEZER IN MEZZANINE SEAT

CP: PROVIDE FREEZER STORAGE IN MEZZANINE SEAT

CP: REFRIGERATE PORT MEZZANINE UNDERMOUNTED STEP BOX

CP: SPLIT LID FOR COCKPIT FISH BOX

CP: STORAGE LOCKERS UNDER PORT AND STARBOARD COAMINGS

DECK/EXT SALON FORWARD WINDOW MASK - NO WARRANTY ON COSMETIC FINISH

DECK/EXT: ANCHOR BRACKET IN ANCHOR LOCKER (WITH NO PULPIT)

DECK/EXT: DELETE BOW PULPIT & INSTALL BOW CLEATS FORE & AFT

DECK/EXT: FRESH WATER WASHDOWN AT BOW INSIDE ANCHOR LOCKER

DECK/EXT: INSTALL SS GAS SPRINGS FOR ANCHOR LOCKER HATCH

DECK/EXT: S&I RECESSED TRIM TAB COVERS
DECK/EXT: SIDE MOUNTED HANDRAILS THAT FOLLOW TOP OF SALON WINDOW
DECOR ITEM: BRIDGE CUSHIONS IN ULTRALEATHER BRISA DISTRESSED OUTDOOR BUCKSKIN

DECOR ITEM: CUSTOM DECOR CHARGE

DECOR ITEM: MEZZANINE CUSHIONS & DRINK BOLSTER IN ULTRALEATHER BRISA BUCKSKIN

DECOR ITEM; BARSTOOLS WITHOUT BACKS (2) IN MAJILITE LEGACY PEARL

DECOR: ACCESSORY KIT

DECOR: BRUSHED NICKEL COVERPLATES FOR SWITCHES & RECEPTACLES THROUGHOUT

DECOR: BRUSHED NICKEL HARDWARE THROUGHOUT

DECOR: CARPET THROUGHOUT; FABRICA - RIVER SONG LAUREL

DECOR: CUSTOM HEADLINER MATERIAL THROUGHOUT - MOCCASIN CHAMOIS

DECOR: CUSTOM WALLPAPER INSTALLATION:

DECOR: CUSTOM WALLPAPER MATERIAL:

DECOR: GALLEY ACCESSORY KIT

DECOR: LED INTERIOR LIGHTS THROUGHOUT

DECOR: PRESTIGE DECOR

DECOR: SALON DOOR TYPE CATCHES ON STATEROOM DOORS

DECOR: SATIN NICKEL INTERIOR LIGHT TRIM THROUGHOUT

DECOR: SOFA, UPGRADED "DEWBERRY STYLE" IN ULTRALEATHER DEEP BRONZE (NO ARM)

DECOR: WRAPPED HATCH CARPET INSTALLATION

DELIVERY: WATER DELIVERY KIT W/TOOL SET

DINETEE: DIMMER ON OVERHEAD LED LIGHTS

DINETTE: DINETTE TABLE TO BE TEAK WITH TEAK PEDESTAL

ENG RM: 110V OUTLET ON AFT BULKHEAD AT ENTRANCEWAY

ENG RM: AWLGRIP BRASS THRU-HULLS & SEA STRAINERS IN ENGINE ROOM & FWD BILGES

ENG RM: FUEL FILTERS SNOW WHITE

ENG RM: FUEL PRIMING PUMPS 24V

ENG RM: GENERATOR GAS-WATER SEPARATOR FOR STD GENERATOR

ENG RM: INSTALL BACKUP PUMP FOR SEAWATER SYSTEM PLUMBED IN PARALLEL

ENG RM: PAINT ALL PUMPS EXCEPT FRESH WATER PUMP SNOW WHITE

ENG RM: RUN LINE FROM OIL CHANGE SYSTEM TO COCKPIT DOCKSIDE BOX

ENG RM: S&I 700 GPD WATERMAKER WITH AUTO BACKFLUSH

FB: BOAT TO GET TOWER AFTER DELIVERY
FB: BUELL AIR HORNS

FB: CUSTOM: INSTALL COMPASS IN RECESSED ELECTRONICS BOX IPO STD LOCATION

FB: CUSTOM: UPGRADE HELM CHAIRS TO BE RELEASE MARINE TRILLION SERIES

FB: CUSTOM: FLYBRIDGE CUSHIONS TO BE DONE IN ULTRALEATHER BUCKSKIN

FB: DRILL & TAP ELECTRONICS BOX LIDS FOR GAS SPRINGS

FB: ELECTRONIC SINGLE-LEVER CONTROLS FOR HELM POD

FB: ELECTRONIC TROLLING VALVES

FB: FRESH WATER OUTLET ON BRIDGE

FB: INSTALL BRIDGE FREEZER BOX

FB: INSTALL BRIDGE WITHOUT EXPOSED FASTENERS

FB: INSTALL REMOVABLE FLYBRIDGE JUMPSEAT BACKREST

FB: PUSH BUTTON CATCHES FOR ELECTRONICS BOXES

FB: RECESSED ELECTRONICS BOXES

FB: REFRIGERATE BRIDGE DRINK BOX

FB: S&I RELEASE TEAK HELM POD

FB: SINGLE LEVER CONTROL HANDLES WITH BOW THRUSTER BUTTON IN HANDLES

FB: VHF RADIO ICOM-604

FB: ZF ENGINE CONTROLS

FSH: FAUCET TO BE SATIN NICKEL

FSH: SHOWER FIXTURES TO BE SATIN NICKEL

FSH: TOWEL BARS AND RINGS TO BE BRUSHED NICKEL

FSR HEAD: AMTICO FLOORING - WILD WALNUT STRAIGHT PLANK, 3" X 36"

FSR HEAD: MIRROR AROUND UPPER VANITY INSERT

FSR HEAD: S&I BRUSHED ALUMINUM SHOWER DOOR

FSR HEAD: TEAK FACE ON LOWER VANITY

FSR: DIMMER ON OVERHEAD LED LIGHTS

FSR: MATTRESS VIKING SLUMBER #6

GALLEY: 110V OUTLET NEXT TO SWITCH ON BOTTOM OF UPPER CABINET ABOVE SINK

GALLEY: 3-BURNER RECESSED RANGE

GALLEY: CUSTOM AMTICO FLOORING IN GALLEY - WILD WALNUT STRAIGHT PLANK, 3" X 36"

GALLEY: FAUCET TO BE SATIN NICKEL

GALLEY: GALLEY OVERHANG

GALLEY: MIRROR BACKSPLASH

GALLEY: UNDERCOUNTER REFRIGERATOR AND FREEZER DRAWERS

GENERAL: PROVIDE OVERBOARD DISCHARGE FOR ALL HEADS
HEADS: SEALAND HEAD SYSTEM

HULL COLOR: SNOW WHITE

HULL: ADDITIONAL FUEL TANK FORWARD FOR A TOTAL OF (3) TANKS

HULL: BOTTOM PAINT VIKING BLUE

HULL: CUSTOM NON-METALLIC BOOT STRIPE IPO STANDARD SINGLE STRIPE

HULL: DC BOW THRUSTER

HULL: FIBERGLASS SIDE THRU-HULLS

HULL: OVAL EXHAUST OUTLETS (LINEAR EXHAUST)

HULL: PROP POCKETS TO REDUCE DRAFT

LAYOUT: GLOSS FINISH THROUGHOUT

LAYOUT: THREE STATEROOM LAYOUT

MECH: INSTALL TEE IN DOCKSIDE WATER MANIFOLD TO FILL WATER TANK FROM
COCKPIT

MSH: FAUCET TO BE SATIN NICKEL

MSH: SHOWER FIXTURES TO BE SATIN NICKEL

MSH: TOWEL BARS & RINGS TO BE BRUSHED NICKEL

MSR CUSTOM: SCONCES

MSR HEAD: AMTICO FLOORING - WILD WALNUT STRAIGHT PLANK, 3" X 36"

MSR HEAD: MIRROR AROUND UPPER VANITY INSERT

MSR HEAD: TEAK FACE ON LOWER VANITY

MSR: DIMMER ON OVERHEAD LED LIGHTS

MSR: END TABLE TOPS TO BE TEAK

MSR: HARDWIRE NIGHT TABLE LAMPS

MSR: MATTRESS VIKING SLUMBER #8

MSR: S&I 26" FLAT SCREEN TV

PORT STRM: MATTRESS VIKING SLUMBER #6

POWER: MAN V12 1550 CRMN - 1550 MHP

PSR: DIMMER ON OVERHEAD LED LIGHTS

SALON: AMTICO FLOORING AT SALON ENTRY - WILD WALNUT STRAIGHT PLANK, 3" X
36"

SALON: CARPET RUNNER, FULL, CANVAS

SALON: CLEAR ICEMAKER

SALON: COCKTAIL TABLE

SALON: DIMMERS FOR QUARTZ LIGHTS

SALON: ELECTRIC PANEL UP

SALON: INSTALL 46" FLAT SCREEN TELEVISION

SALON: S&I TEAK TRIM WHERE AMTICO FLOOR MEETS CARPET
SALON: SALON DOOR WITH ELECTRIC DOOR OPENER
SALON: SALON ENTERTAINMENT CENTER TOP: TEAK
SALON: VALANCES TO BE TEAK
SALON: VIKING HOME THEATER
SALON: WIRE BOX TO BE TEAK

Исключения

При продаже яхты исключаются личные вещи владельца.

Отказ от ответственности

Компания предоставляет описание судна или яхты добросовестно, но не может гарантировать точность этой информации, а также не ручается за техническое состояние. Покупатель должен проинструктировать своих агентов или оценщиков исследовать представленную информацию более подробно, по собственному желанию. Продажа судна или яхты, изменение цены или снятие с продажи будет происходить без предварительного уведомления.

ФОТОГРАФИИ

Salon



Salon



Salon



Salon



Salon



Salon



Salon



Salon



Galley



Galley



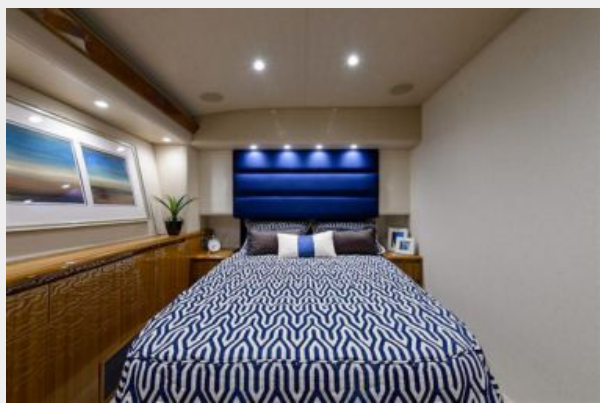
Galley



Master Stateroom



Master Stateroom



Master Stateroom



Master Stateroom



Master Head



Forward Stateroom

Forward Stateroom



Guest Stateroom



Guest Stateroom



Guest Stateroom



Guest Head



Guest Head



Laundry Center



Flybridge



Flybridge



Flybridge



Flybridge



Flybridge



Flybridge



Flybridge



Flybridge



Flybridge



Cockpit



Cockpit



Cockpit



Cockpit



Cockpit



Engine Room



Engine Room



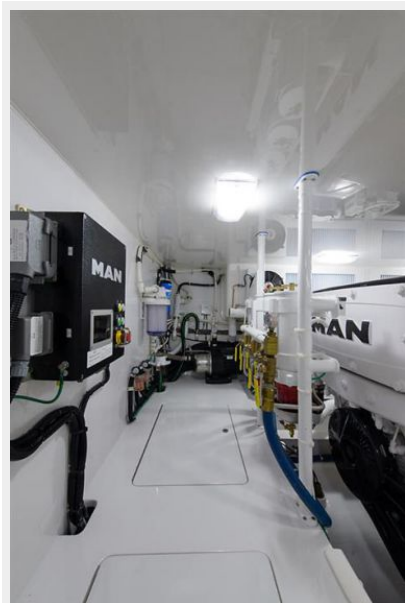
Engine Room



Engine Room



Engine Room



Engine Room



Engine Room



Engine Room



Engine Room



Engine Room



55-419



55-419



55-419

55-419



55-419



КОНТАКТЫ

Андрей Шестаков (Andrey Shestakov) – ведущий яхтенный брокер отдела продаж яхт и судов компании Shestakov Yacht Sales Inc. Официальный представитель Shestakov Yacht Sales Inc. для русскоговорящих клиентов в центральном офисе компании в Майами/Форт Лодердейл/Флорида/США.

Контактная информация

Email: andrey@shestakovyachtsales.com

Web: shestakovyachtsales.com

Телефоны

Краснодарский край: **+7(918)465-66-44**

США, Майами, Флорида: **+1(954)274-4435**

Время работы

Понедельник – Суббота: **9:00 - 21:00**
EDT

Воскресенье: **Закрито**

Адрес



Harbour Towne Marina, 850 NE 3rd St,
STE 213, Dania, FL 33004