

ADVENTURE — GRAND BANKS



Builder: GRAND BANKS

Year Built: 1997

Model: Cruiser

Price: PRICE ON APPLICATION

Location: United States

LOA: 43' 0" (13.11m)

Beam: 13' 2" (4.01m)

Max Draft: 3' 7" (1.09m)

Our experienced yacht broker, Andrey Shestakov, will help you choose and buy a yacht that best suits your needs **Adventure — GRAND BANKS** from our catalogue. Presently, at Shestakov Yacht Sales Inc., we have a wide variety of yachts available on our sale's list. We also work in close contact with all the big yacht manufacturers from all over the world.

If you would like to buy a yacht **Adventure — GRAND BANKS** or would like help answering any questions concerning purchasing, selling or chartering a yacht, please call **+1(954)274-4435**

TABLE OF CONTENTS

TABLE OF CONTENTS	2
SPECIFICATIONS	3
Overview	3
Basic Information	3
Dimensions	3
Speed, Capacities and Weight	3
Accommodations	3
Hull and Deck Information	4
Engine Information	4
DETAILED INFORMATION	5
1998 43 Grand Banks Eastbay Flybridge	5
Exclusions	8
Disclaimer	8
PHOTOS	10
CONTACTS	14
Contact details	14
Telephones	14
Office hours	14
Address	14

SPECIFICATIONS

Overview

This is the first of the highly successful and well regarded Grand Banks Eastbay 43 Flybridge boats. Designed by C Raymond Hunt and Associates, the entire Eastbay line is fast, efficient and soft riding. Grand Banks quality and craftsmanship are evident throughout. Downeast styling, superior construction, all teak interior and phenomenal utility are hallmarks of the Eastbay line. This boat has had excellent care, is well equipped, and offers the most practical layout offered in the 43 Flybridge series.

Basic Information

Category: Cruiser

Model Year: 1998

Year Built: 1997

Country: United States

Fly Bridge: Yes

Cockpit: Yes

Dimensions

LOA: 43' 0" (13.11m)

Beam: 13' 2" (4.01m)

Max Draft: 3' 7" (1.09m)

Speed, Capacities and Weight

Water Capacity: 110 Gallons

Holding Tank: 30 Gallons

Fuel Capacity: 450 Gallons

Accommodations

Total Cabins: 2

Total Berths: 3

Sleeps: 4

Total Heads: 1

Hull and Deck Information

Hull Material: Fiberglass

Engine Information

Engines: 2

Manufacturer: Caterpillar

Model: 3208TA

Engine Type: Inboard

Fuel Type: Diesel

DETAILED INFORMATION

1998 43 Grand Banks Eastbay Flybridge

Accommodations

Upon entering the salon from the cockpit through the sliding door, the bright and airy space is warm and inviting. An L-shaped settee is to starboard with copious amounts of storage below the seating. A custom built Grand Banks drop leaf, hi-lo table makes for a convenient coffee table or a spacious dining table. To port is a storage cabinet, two occasional chairs, an entertainment center and forward is a chart desk with two more chairs. The lower helm is forward to starboard and has a full complement of controls, electronics suite, and a pilothouse door next to the helm seat.

Down the companionway steps to port is the galley with holding plate refrigerator system, propane stove, microwave oven, chest freezer, Corian counter tops and abundant storage. Across to starboard is the guest stateroom with bunk beds, hanging and drawer storage and a sliding teak privacy door. Forward to port is the head with vanity, toilet and storage. Directly across the companionway is the shower stall with Teak grate flooring and another sink.

The master stateroom is forward with centerline pedestal style berth, drawer storage, hanging lockers, deck hatch, port lights and cabin reading lights.

Teak and Holly soles are found throughout the vessel. Port lights, deck hatches, sliding windows and an opening center windshield provide wonderful ventilation when air conditioning is not in use. All interior upholstery and furnishings are recently upgraded.

Electronics

Upper Helm:

Garmin 3010C GPS/chartplotter

Furuno radar 36 mi.

Simrad IS 1515 digital depth

Robertson AP 300X autopilot

Bow thruster joystick control

ACR spotlight control

ICOM VHF M59

Lower Helm:

Garmin 3010C GPS/chartplotter

Furuno radar 36 mi.

Simrad digital depth

Raymarine ST60 wind inst.

Robertson AP300X autopilot

ACR spotlight control

ICOM VHF M127

Windlass control

Heart interface inverter control

Bow thruster joystick control

Rudder angle indicator

Electrical

Westerbeke 5 kW generator

50 Amp shore service with cord

12V/110V electric breaker panel

12V monitor

110V monitor

Heart 2500W inverter

Battery charger

8D Batteries

Cabin reading lights

Overhead lighting

Engine room lighting

Galvanic isolator

12V fan

Sansui flatscreen TV with DVD

Mechanical

Caterpillar 3208TA main propulsion

Fuel pumps and injectors serviced 3/14

Cooling system inspected 7/14/14

Dripless shaft seals

Kobelt controls (flybridge and lower helm)

Hynautic steering

Bennett trip tabs

Racor fuel filters with vacuum gauges

Glendinning synchronizer

Sound down shaft couplings

Marine Air air conditioning (2)

3 Auto bilge pumps

1 Manual whale gusher bilge pump

Hot water heater

Deck

Bimini top (Toast Sunbrella)

Forward EZ2CY enclosure

Flybridge helm cover

Awlgrip blue hull paint

Stidd helm and companion chairs

Teak cockpit sole

Teak swim platform with swim ladder

Maxwell windlass

Bow pulpit and rails

Dual anchor chute

Fortress anchor/CQR anchor with chain and rode

Cabin windshield covers

Window covers for aft & pilothouse doors

Exterior varnish 6/14

Lewmar deck hatches

St. Croix davit system with extra supports

Raw water washdown

Fresh water washdown

Cockpit hot and cold shower

Transom door

Exclusions

All owner's personal effects removed. All items aboard convey with vessel.

Exclusions

Owner's personal belongings.

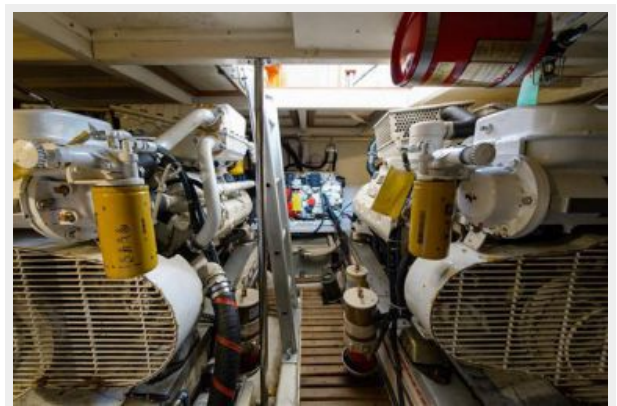
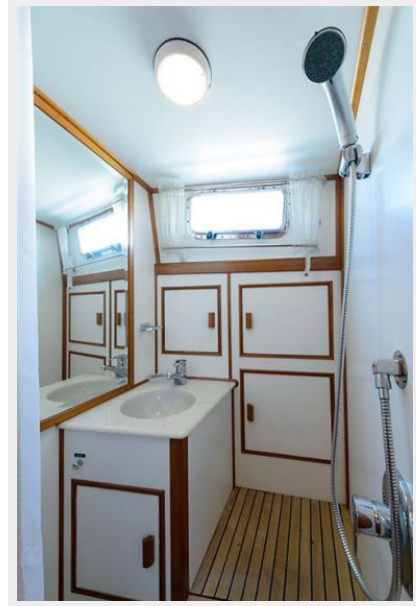
Disclaimer

The Company offers the details of this vessel or yacht in good faith but cannot guarantee or warrant the accuracy of this information nor warrant the condition of the vessel. A buyer should

instruct his representatives, agents, or his surveyors, to investigate such details as the buyer desires validated. This vessel or yacht is offered subject to prior sale, price change, or withdrawal without notice.

PHOTOS









CONTACTS

Andrey Shestakov, leading yacht broker of the sales department of Shestakov Yacht Sales Inc. Shestakov Yacht Sales Inc., the official representative of the Miami/Fort Lauderdale FL headquarters.

Contact details

Email: andrey@shestakovyachtsales.com

Web: shestakovyachtsales.com/en/

Telephones

USA: +1(954)274-4435

Office hours

Monday – Saturday: **9:00 - 21:00** EDT

Sunday: **closed**

Address



Harbour Towne Marina, 850 NE 3rd St,
STE 213, Dania, FL 33004