

## 42-235 — VIKING



**Builder:** [VIKING](#)

**LOA:** 42' 0" (12.80m)

**Year Built:** 2014

**Max Draft:** 3' 5" (1.04m)

**Model:** Sport Fisherman

**Price:** PRICE ON APPLICATION

**Location:** United States

Our experienced yacht broker, Andrey Shestakov, will help you choose and buy a yacht that best suits your needs **42-235 — VIKING** from our catalogue. Presently, at Shestakov Yacht Sales Inc., we have a wide variety of yachts available on our sale's list. We also work in close contact with all the big yacht manufacturers from all over the world.

If you would like to buy a yacht **42-235 — VIKING** or would like help answering any questions concerning purchasing, selling or chartering a yacht, please call **+1(954)274-4435**

---

# TABLE OF CONTENTS

---

|                                   |    |
|-----------------------------------|----|
| TABLE OF CONTENTS                 | 2  |
| SPECIFICATIONS                    | 3  |
| Overview                          | 3  |
| Basic Information                 | 3  |
| Dimensions                        | 3  |
| Speed, Capacities and Weight      | 3  |
| Accommodations                    | 3  |
| Hull and Deck Information         | 4  |
| Engine Information                | 4  |
| DETAILED INFORMATION              | 5  |
| Manufacturer Provided Description | 5  |
| Dealer Selected Options           | 5  |
| Exclusions                        | 7  |
| Disclaimer                        | 7  |
| PHOTOS                            | 9  |
| CONTACTS                          | 16 |
| Contact details                   | 16 |
| Telephones                        | 16 |
| Office hours                      | 16 |
| Address                           | 16 |

---

# SPECIFICATIONS

---

## Overview

---

Creating a model within a model has been a successful path for Viking as demonstrated by the Viking 42 Convertible and 42 Open, which share the same hull with uniquely different deck and interior arrangements. The popularity of these new models has encouraged us to expand this theme with a pair of new 42s with striking profiles and special features that showcase Viking's ability to broaden the appeal of this versatile hull.

## Basic Information

---

**Category:** Sport Fisherman

**Sub Category:** Sport Fisherman

**Model Year:** 2014

**Year Built:** 2014

**Country:** United States

**Vessel Top:** Hardtop

## Dimensions

---

**LOA:** 42' 0" (12.80m)

**Max Draft:** 3' 5" (1.04m)

**MFG Length:** 46' 2" (14.07m)

## Speed, Capacities and Weight

---

**Displacement:** 32699 Pounds

**Water Capacity:** 120 Gallons

**Holding Tank:** 39 Gallons

**Fuel Capacity:** 525 Gallons

## Accommodations

---

**Total Cabins:** 2

**Total Heads:** 1

---

## Hull and Deck Information

---

**Hull Material:** Fiberglass

**Hull Color:** White

---

## Engine Information

---

**Engines:** 2

**Manufacturer:** Cummins

**Model:** QSC600 W/ ZEUS DRIVE

**Engine Type:** Inboard

**Fuel Type:** Diesel

---

# DETAILED INFORMATION

---

## Manufacturer Provided Description

---

### Viking 42 Family Values

Creating a model within a model has been a successful path for Viking as demonstrated by the Viking 42 Convertible and 42 Open, which share the same hull with uniquely different deck and interior arrangements. The popularity of these new models has encouraged us to expand this theme with a pair of new 42s with striking profiles and special features that showcase Viking's ability to broaden the appeal of this versatile hull.

Using our \$1 million five-axis profiler, we designed and built a plug and a female mold to create a rakish fiberglass deckhouse module, fully open to the cockpit while incorporating stylish convertible window lines, and the roof overhang and cabin trails.

The 42 ST will be a sharp looking rig with its fitted Palm Beach Towers' tuna tower. Add a pair of outriggers and this boat is an ideal ride for the sailfish circuit, cobia hunting and cruising the Bahamas. The 42 SC has a distinctive New England flavor and includes a choice of a custom fiberglass mast for the radar and other antennas, or a customized radar arch. Each model can be further personalized with dramatic paint schemes to add your signature and yacht club panache.

The 42 ST and 42 SC sport the familiar twin mezzanine cockpit of the 42 Open, along with the practical and feature full bridge deck and a center console station with the available teak finish helm pod, flanking lounge seating, and an inviting interior with teak joinery, a master stateroom forward, and twin berths aft separated by the salon, the head, and galley. With their eclectic style along with the superb running characteristics of the responsive and sea-kindly Viking 42 resin infused hull powered by 600 mhp Cummins QSC diesels and the articulating Zeus pod-drive propulsion system with joystick controls, these new models are an exciting addition to the Viking line.

---

## Dealer Selected Options

---

### LAYOUT

Viking 42' Open, Sport Coupe, Hull #42235

LAYOUT: SPORT COUPE (SC)

BASE PRICE: 42' OPEN

POWER: CUMMINS QSC-600 WITH ZEUS DRIVE

ENGINE ROOM

POWER: CUMMINS QSC-600 WITH ZEUS DRIVE  
ENGINES AND GENERATOR  
INTERIOR  
GALLEY: CUSTOM AMTICO FLOORING IN GALLEY; TEAK AND HOLLY  
GALLEY: CORIAN COUNTERTOP TO BE MATTE FINISH  
SANDALWOOD WITH STANDARD BULLNOSE EDGE  
GALLEY: FAUCET TO BE SATIN NICKEL  
MSR HEAD: AMTICO TEAK AND HOLLY FLOORING  
MSR HEAD: CORIAN VANITY COUNTERTOP WITH BONE SINK (COLOR: ) MATTE FINISH;  
SANDALWOOD WITH STANDARD BULLNOSE EDGE  
MSR HEAD: S&I BRUSHED ALUMINUM SHOWER DOOR  
MSH: SHOWER FIXTURES TO BE SATIN NICKEL  
MSH: TOWEL BARS & RINGS TO BE BRUSHED NICKEL  
MSH: FAUCET TO BE SATIN NICKEL  
EXTERIOR  
FB: ELECTRONIC SINGLE-LEVER CONTROLS FOR HELM POD  
FB: HELM AIR CONDITIONING  
FB: S&I TEAK FINISH FIBERGLASS HELM POD  
COCKPIT: RECESSED DOCKSIDE BOXES WITH FIBERGLASS DOORS AND GAFF STORAGE  
COCKPIT: COCKPIT FREEZER AND REFRIGERATED DRINK BOX  
DECK/EXT: BOW PULPIT  
DECK/EXT: LEWMAR V2 SS WINDLASS (GYPSY AND DRUM)  
HULL: BOTTOM PAINT BLACK  
HULL: BOOT STRIPE TO BE VIKING STD BLACK  
FB: TEAK HELM CHAIR UPGRADE WITH STAINLESS STEEL PEDESTAL  
FB: UPGRADE FABRIC ON COMMAND DECK CUSHIONS TO SUNBRELLA  
FB: CARPET FOR COMMAND DECK  
FB: INSTALL INTERGRATED FIBERGLASS SPORT ARCH  
FB: PAINT SPORT ARCH, ANTENNA AND TOP BLACK

HULL: 1/2" ACCENT STRIPE 1/2" ABOVE BOOT STRIPE; BLACK DÉCOR  
DECOR: SHEETS, (1) SET, 2 STATEROOM  
DECOR: SMART DECOR  
DECOR: ACCESSORY KIT  
DECOR: SOFA, ULTRALEATHER LINEN #550-3089 NUDE  
DECOR: WRAPPED HATCH CARPET INSTALLATION  
DECOR: BRUSHED NICKEL HARDWARE THROUGHOUT  
DECOR: BRUSHED NICKEL COVERPLATES FOR SWITCHES & RECEPTACLES THROUGHOUT  
DECOR: SATIN NICKEL INTERIOR LIGHT TRIM THROUGHOUT  
DECOR: CARPET, (THROUGHOUT): SHAW MERINO #CS15 COLOR, #00125 AUSSIE  
DECOR: CARPET (COMMAND DECK): CARPETING COSTA, CORINTHIAN MARINE #R2861 TEAK  
DECOR: WALLCOVERING VIKING SMART 2014; COMMON: (57) PROMPOSA #H320-18; HEAD: (57) MERRIFIELD #V220-16  
DECOR: COMMAND DECK: HELM CHAIRS AND COMPANION SEAT: IN ULTRALEATHER BRISA  
DISTRESSED OUTDOOR BUCKSKIN #396-3134  
DECOR: COMMAND DECK: BENCH SEATS: IN ULTRALEATHER BRISA DISTRESSED OUTDOOR CHAMOIS #396-3024/WELT IN ULTRALEATHER BRISA DISTRESSED OUTDOOR BUCKSKIN #396-3134  
DECOR: MEZZANINE CUSHIONS: IN ULTRALEATHER BRISA DISTRESSED OUTDOOR CHAMOIS #396-3024  
ATLANTIC MARINE ELECTRONICS-42'OPEN

---

## Exclusions

Owner's personal belongings.

---

## Disclaimer

The Company offers the details of this vessel or yacht in good faith but cannot guarantee or

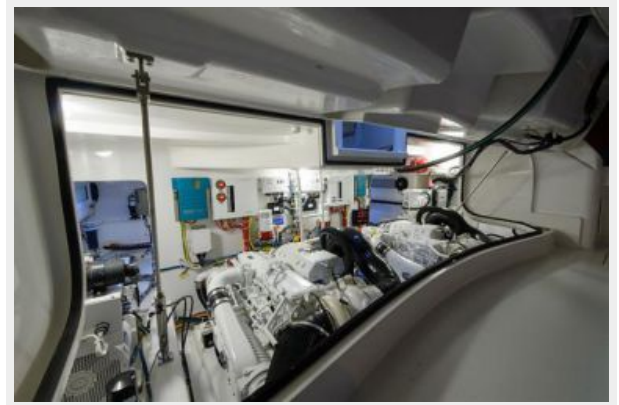
warrant the accuracy of this information nor warrant the condition of the vessel. A buyer should instruct his representatives, agents, or his surveyors, to investigate such details as the buyer desires validated. This vessel or yacht is offered subject to prior sale, price change, or withdrawal without notice.



# PHOTOS



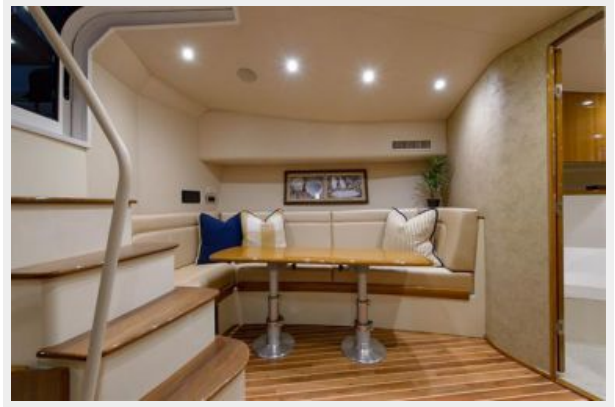
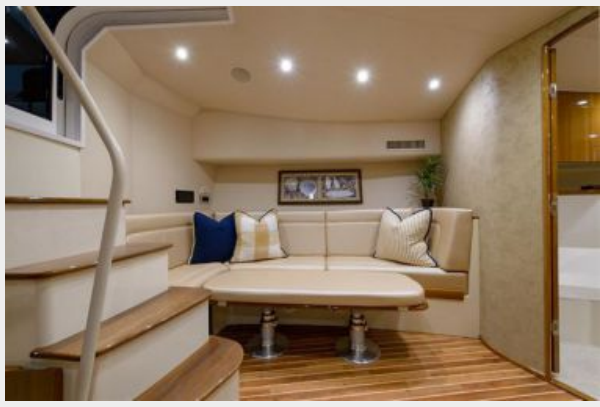
















# CONTACTS

---

Andrey Shestakov, leading yacht broker of the sales department of Shestakov Yacht Sales Inc. Shestakov Yacht Sales Inc., the official representative of the Miami/Fort Lauderdale FL headquarters.

## Contact details

---

Email: [andrey@shestakovyachtsales.com](mailto:andrey@shestakovyachtsales.com)

Web: [shestakovyachtsales.com/en/](http://shestakovyachtsales.com/en/)

## Telephones

---

USA: +1(954)274-4435

## Office hours

---

Monday – Saturday: **9:00 - 21:00** EDT

Sunday: **closed**

## Address

---



Harbour Towne Marina, 850 NE 3rd St,  
STE 213, Dania, FL 33004