

MISTY MAIDEN — MORGAN



Builder: MORGAN

Year Built: 1988

Model: Center Cockpit

Price: PRICE ON APPLICATION

Location: United States

LOA: 41' 0" (12.50m)

Beam: 13' 10" (4.22m)

Min Draft: 4' 10" (1.47m)

Our experienced yacht broker, Andrey Shestakov, will help you choose and buy a yacht that best suits your needs **Misty Maiden — MORGAN** from our catalogue. Presently, at Shestakov Yacht Sales Inc., we have a wide variety of yachts available on our sale's list. We also work in close contact with all the big yacht manufacturers from all over the world.

If you would like to buy a yacht **Misty Maiden — MORGAN** or would like help answering any questions concerning purchasing, selling or chartering a yacht, please call **+1(954)274-4435**

TABLE OF CONTENTS

TABLE OF CONTENTS	2
SPECIFICATIONS	5
Overview	5
Basic Information	5
Dimensions	5
Speed, Capacities and Weight	5
Accommodations	5
Hull and Deck Information	5
Engine Information	6
DETAILED INFORMATION	7
Accommodations	7
Galley	7
Sails	7
Electronics/Navigation Equipment	8
Mechanical	8
Deck Equipment & Hull	8
Electrical	9
Negotiable Items	9
Exclusions	9
Disclaimer	10
PHOTOS	11
Bow View	11
Full Enclosure	11
Center Cockpit	11
Comfortable Seating	11
Chartplotter, Radar, Autopilot...	12
Roomy Salon	12
Custom Dining Table	12

Swivel Chairs	12
Galley	12
Galley View 2	12
Forward Facing Nav Desk	13
Master Cabin Aft	13
Aft Head	13
Custom Mattress	13
Shower Stall	14
V Berth with Filler	14
Forward Head	14
Large Engine Compartment	14
43 hp Yanmar 3135 hrs	15
Spectra Watermaker - new never used	15
SSB, VHF	15
Stern	15
Solar, Wind Gen, Tracvision	15
Dinghy on Davits, outboard hoist	15
Manson Anchor, Electric Windlass	16
Foredeck	16
Mast, Radar, Satellite Weather	16
Roller Furling Genoa	16
Stack Pack Fully Battened Main	16
Lifesling	16
Negotiable 4 man Offshore liferaft	17
Starboard View	17
CONTACTS	18
Contact details	18
Telephones	18
Office hours	18

Address

18

SPECIFICATIONS

Overview

Very nicely maintained vessel with clean interior. Well equipped for cruising including a Generator, Solar panels, Wind generator, Watermaker, GPS, Autopilot, SSB, Tracvision, Marine weather and much more. Please take a close look at the photos and full specs.

Basic Information

Category: Center Cockpit

Sub Category: Cruising Sailboat

Model Year: 1988

Year Built: 1988

Country: United States

Dimensions

LOA: 41' 0" (12.50m)

LWL: 34' 0" (10.36m)

Beam: 13' 10" (4.22m)

Min Draft: 4' 10" (1.47m)

Speed, Capacities and Weight

Displacement: 23000 Pounds

Water Capacity: 215 Gallons

Fuel Capacity: 85 Gallons

Accommodations

Total Cabins: 2

Total Heads: 2

Hull and Deck Information

Hull Material: Fiberglass

Engine Information

Engines: 1

Manufacturer: Yanmar

Engine Type: Inboard

Fuel Type: Diesel

DETAILED INFORMATION

Accommodations

- 2 cabin/2 head layout
- Teak and holly sole
- Blue upholstered U-shaped settee
- Custom mahogany folding dining table
- (2) Swivel arm chairs
- Wool oriental rugs
- Generous cabinets and storage throughout
- Awartship master berth with custom latex mattress
- Side seats and lockers
- Private head w/separate shower stall
- Nav desk
- V berth with insert
- 6'6" headroom
- Dual access forward head
- Opening hatches w/screens and shades
- Opening ports
- Reading lights
- 12V fans
- Air conditioning and heat

Galley

- Double sided long galley open to salon
- Top loading Adler Barbor 12V Refrigerator
- Top loading Adler Barbor 12V Freezer
- Microwave
- 3 burner propane stove and oven
- Double deep SS sinks
- Pressure water system
- Hot water heater
- Fresh water manual pump
- Drinking water filter
- Deep bin storage
- 2 banks of drawers
- Cabinets

Sails

- Fully battened mainsail in Stack Pack
- Furlex roller furling
- 135 Genoa
- 100 Jib
- Cruising Spinnaker w/ chute

Electronics/Navigation Equipment

- Raymarine Radar SL72 24 mi
- GPS map 408 Chartplotter
- GPS 182
- Raymarine wind, speed, depth gauges
- Raymarine hydraulic Autopilot
- Master marine weather
- SSB and Ham
- ICOM VHF
- Tracvision
- Ritchie compass
- Flatscreen TV
- DVD player w/HDMI/USB ports
- Polyplanner speakers

Mechanical

- Good engine access in passageway
- 43 hp Yanmar diesel engine 3135 hours
- Maxi feathering prop
- Straight shaft
- Dripless seal
- Racor filter
- Alternator
- spare alternator
- NEW Village Marine Little Wonder Watermaker - never used
- (2) Air conditioning and heat units, 16k btu, 5000k btu
- (2) manual Jabsco heads w/macerator and Y valve
- Manuals

Deck Equipment & Hull

- 65# Manson anchor w/150' chain and 150' rode

- Double anchor roller
- Electric windlass
- Fortress stern anchor
- (2) 52# Lewmar Primary winches
- 40# Lewmar winch
- (3) 16# Lewmar winches on mast
- Dinghy Davits
- Outboard hoist
- Center cockpit
- Dodger, bimini and full enclosure
- Custom closed cell foam cockpit cushions and back rest
- Padeyes for hooks in cockpit
- Teak cockpit table and drink holders
- Double lifelines and stanchions
- Side gates
- Stern ladder
- Lifesling
- 4 Offshore PFD's
- Keel stepped mast
- Fiberglass construction
- Encapsulated keel

Electrical

- Entec West Generator 5.2 kw 700 hrs
- (2) Solar panels 80 amps each
- Controller
- (2) sets of 4 each 6v golf cart batteries, total amp hrs 800
- Battery charger/invertor
- LED masthead and nav lights

Negotiable Items

- Winslow 4 man Offshore Liferaft
- Dinghy and Outboard
- Self steering vane
- Large anchor

Exclusions

Owner's personal belongings.

Disclaimer

The Company offers the details of this vessel or yacht in good faith but cannot guarantee or warrant the accuracy of this information nor warrant the condition of the vessel. A buyer should instruct his representatives, agents, or his surveyors, to investigate such details as the buyer desires validated. This vessel or yacht is offered subject to prior sale, price change, or withdrawal without notice.

PHOTOS

Full Enclosure



Bow View



Center Cockpit



Comfortable Seating



Chartplotter, Radar, Autopilot...



Roomy Salon



Custom Dining Table



Swivel Chairs



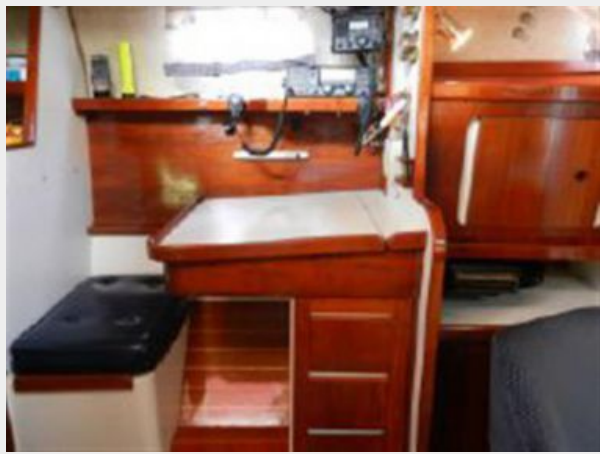
Galley



Galley View 2



Forward Facing Nav Desk



Master Cabin Aft



Custom Mattress



Aft Head



Shower Stall



V Berth with Filler



Forward Head



Large Engine Compartment



43 hp Yanmar 3135 hrs



Spectra Watermaker - new never used



SSB, VHF



Stern



Dinghy on Davits, outboard hoist



Solar, Wind Gen, Tracvision



Manson Anchor, Electric Windlass



Foredeck



Mast, Radar, Satellite Weather



Roller Furling Genoa



Stack Pack Fully Battened Main



Lifesling



Negotiable 4 man Offshore liferaft



Starboard View



CONTACTS

Andrey Shestakov, leading yacht broker of the sales department of Shestakov Yacht Sales Inc. Shestakov Yacht Sales Inc., the official representative of the Miami/Fort Lauderdale FL headquarters.

Contact details

Email: andrey@shestakovyachtsales.com

Web: shestakovyachtsales.com/en/

Telephones

USA: +1(954)274-4435

Office hours

Monday – Saturday: **9:00 - 21:00** EDT

Sunday: **closed**

Address



Harbour Towne Marina, 850 NE 3rd St,
STE 213, Dania, FL 33004