

INTEGRITY — VICTORY



Builder: VICTORY

Year Built: 1999

Model: Catamaran

Price: PRICE ON APPLICATION

Location: United States

LOA: 35' 0" (10.67m)

Beam: 16' 0" (4.88m)

Max Draft: 2' 10" (0.86m)

Our experienced yacht broker, Andrey Shestakov, will help you choose and buy a yacht that best suits your needs **Integrity — VICTORY** from our catalogue. Presently, at Shestakov Yacht Sales Inc., we have a wide variety of yachts available on our sale's list. We also work in close contact with all the big yacht manufacturers from all over the world.

If you would like to buy a yacht **Integrity — VICTORY** or would like help answering any questions concerning purchasing, selling or chartering a yacht, please call **+1(954)274-4435**

TABLE OF CONTENTS

TABLE OF CONTENTS	2
SPECIFICATIONS	3
Basic Information	3
Dimensions	3
Accommodations	3
Hull and Deck Information	3
Engine Information	3
DETAILED INFORMATION	4
Description	4
Galley	4
Electronics and Navigational Equipment	4
Electrical System	4
Sails and Rigging	4
Recent Updates	4
Exclusions	5
Disclaimer	5
PHOTOS	6
CONTACTS	16
Contact details	16
Telephones	16
Office hours	16
Address	16

SPECIFICATIONS

Basic Information

Category: Catamaran

Model Year: 1999

Year Built: 1999

Country: United States

Dimensions

LOA: 35' 0" (10.67m)

Beam: 16' 0" (4.88m)

Max Draft: 2' 10" (0.86m)

Accommodations

Total Cabins: 1

Hull and Deck Information

Hull Material: Fiberglass

Engine Information

Manufacturer: Yanmar

Engine Type: Outboard

Fuel Type: Diesel

DETAILED INFORMATION

Description

The Victory 35 is a cruising catamaran built in the US and designed to be fast, safe, comfortable and fun to sail. With all lines led aft she's easy to skipper singlehandedly. The Victory has as much room as a 50' monohull. The cockpit and salon accommodate 6-8 people. Within the hulls are three roomy cabins with 2 king-size aft berths and an over/under berths forward. The galley-up layout lets the cook be where the action is. The Victory is bright and airy. Light pours in through 180 degree panoramic windows while 10 opening ports and 7 opening hatches provide ventilation. With shallow draft she's ready to cruise Fl. Keys and Bahamas easily.

Galley

- SS Sink
- AC/DC Fridge
- Propane Stove/Oven
- Microwave Oven
- Lots of Storage

Electronics and Navigational Equipment

- Raytheon Auto Pilot
- Garmin 5208 GPSMAP
- Apparent Wind
- Autohelm Depth/Speed
- Compass
- Stereo XM Radio
- VHF

Electrical System

- 30 Amp 110V AC Shore Service
- 5 12V DC Batteries
- 2-50 Amp Solar Panels

Sails and Rigging

- Full battened mainsail
- Jiffy reefing mainsail
- Doyle stak-pak
- Sail Cover
- Lazyjacks
- Roller furling genoa
- Total sail area: 640 sq feet
- Genoa track and blocks
- Two 2-speed, self-tailing winches
- One electric winch
- Deck organizers and sheet stoppers
- Aft traveler
- Internal main and genoa halyards
- Topping lift
- Anodized mast and boom
- Running lights, steaming lights and spreader lights

Recent Updates

- Head (Joker valve)
- Refrigerator
- Air conditioner
- Air conditioner strainer
- Recondition sails and change sacrificial fabric
- New cradle cover and lazy jacks for main sail
- Main halyard
- One (?) new cam cleat (starboard side)
- Engine work
- Alternator reconditioned
- Belt
- Hoses

•Transmission •Realign shaft •New motor mounts •New exhaust manifold •New fuel filter •New electric fuel pump •Recondition joints on sail drive lifting and steering •New interior upholstery and storage •Helm seat, new upholstery and padding •Coaxial cable outlet in cabin and on stern of boat •New shore power cord •Power inverter •TV •DVD player •Repair of PO's damage to fiberglass on starboard bow •Upgrade of original above water thru hulls to harder •New compass (lighted) •10 ft. Achilles dinghy

Exclusions

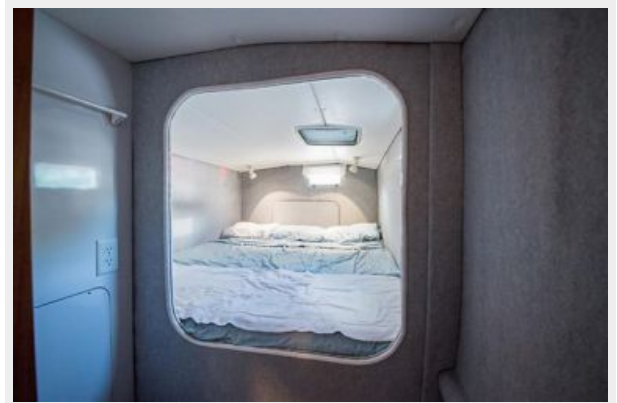
Owner's personal belongings.

Disclaimer

The Company offers the details of this vessel or yacht in good faith but cannot guarantee or warrant the accuracy of this information nor warrant the condition of the vessel. A buyer should instruct his representatives, agents, or his surveyors, to investigate such details as the buyer desires validated. This vessel or yacht is offered subject to prior sale, price change, or withdrawal without notice.

PHOTOS





















CONTACTS

Andrey Shestakov, leading yacht broker of the sales department of Shestakov Yacht Sales Inc. Shestakov Yacht Sales Inc., the official representative of the Miami/Fort Lauderdale FL headquarters.

Contact details

Email: andrey@shestakovyachtsales.com

Web: shestakovyachtsales.com/en/

Telephones

USA: +1(954)274-4435

Office hours

Monday – Saturday: **9:00 - 21:00** EDT

Sunday: **closed**

Address



Harbour Towne Marina, 850 NE 3rd St,
STE 213, Dania, FL 33004