

KISMET — HARGRAVE



Builder: HARGRAVE

Year Built: 2003

Model: Motor Yacht

Price: PRICE ON APPLICATION

Location: United States

LOA: 78' 6" (23.93m)

Beam: 20' 0" (6.10m)

Max Draft: 5' 8" (1.73m)

Cruise Speed: 17 Kts. (20 MPH)

Max Speed: 21 Kts. (24 MPH)

Our experienced yacht broker, Andrey Shestakov, will help you choose and buy a yacht that best suits your needs **Kismet — HARGRAVE** from our catalogue. Presently, at Shestakov Yacht Sales Inc., we have a wide variety of yachts available on our sale's list. We also work in close contact with all the big yacht manufacturers from all over the world.

If you would like to buy a yacht **Kismet — HARGRAVE** or would like help answering any questions concerning purchasing, selling or chartering a yacht, please call **+1(954)274-4435**

TABLE OF CONTENTS

TABLE OF CONTENTS	2
SPECIFICATIONS	4
Overview	4
Basic Information	4
Dimensions	4
Speed, Capacities and Weight	4
Accommodations	5
Hull and Deck Information	5
Engine Information	5
DETAILED INFORMATION	6
Accommodations	6
Vessel Walkthrough	6
Aft Deck	6
Salon	6
Galley	7
Day Head	7
Skylounge	7
Boat Deck	8
Lower Foyer	8
Master Stateroom	8
VIP Stateroom 1	9
Twin Stateroom	9
Crew Quarters /Forward Staterooms	9
Lazarette	10
Foredeck	10
Engine Room	10
Electrical Equipment	11
Recent Refits and upgrades	11

Exclusions	13
Disclaimer	13
Exclusions	13
Disclaimer	13
PHOTOS	14
Shekinah Glory General Arrangement	19
CONTACTS	20
Contact details	20
Telephones	20
Office hours	20
Address	20

SPECIFICATIONS

Overview

Haul out Bottom Job & Insurance Survey (August 2020)

With a wonderful balance of indoor and outdoor space, five staterooms, an abundant equipment list, day heads on main deck and sky lounge levels, dependable CAT power, twin 32 kw gensets, bow and stern thrusters, waste treatment and top flight maintenance, KISMET is a must see!

Accommodations: 5 Staterooms / Sleeps 10 (includes forward crew bunk beds)

Basic Information

Category: Motor Yacht

Sub Category: Semi-Displacement

Model Year: 2003

Year Built: 2003

Country: United States

Vessel Top: Enclosed P.H. W/Sundeck

Dimensions

LOA: 78' 6" (23.93m)

LWL: 68' 6" (20.88m)

Beam: 20' 0" (6.10m)

Max Draft: 5' 8" (1.73m)

Speed, Capacities and Weight

Cruise Speed: 17 Kts. (20 MPH)

Max Speed: 21 Kts. (24 MPH)

Displacement: 170000 Pounds

Water Capacity: 435 Gallons

Holding Tank: 100 Gallons

Fuel Capacity: 2700 Gallons

Accommodations

Total Cabins: 5

Total Berths: 7

Sleeps: 10

Total Heads: 7

Crew Cabin: 1

Crew Berths: 1

Crew Sleeps: 1

Crew Heads: 1

Hull and Deck Information

Hull Material: Fiberglass

Deck Material: Fiberglass

Hull Configuration: Semi-Displacement

Hull Color: White

Hull Finish: Stainless Steel

Hull Designer: Hargrave Yacht Design

Exterior Designer: Hargrave Yacht Design

Interior Designer: YIBS

Engine Information

Engines: 2

Manufacturer: Caterpillar

Model: 3412

Engine Type: Inboard

Fuel Type: Diesel

DETAILED INFORMATION

Accommodations

This vessel is built to accommodate up to ten people comfortably in five staterooms. The master stateroom takes advantage of the full width of the beam, and features his and her heads, while the VIP and twin stateroom each have their own en suite head and room for 4 guests. The forward quarters are made up of two additional staterooms, including a double berth stateroom with a double bed and an additional room with over/under bunks for two more guests.

Vessel Walkthrough

The teak aft deck sets the stage for casual entertainment and leads you into the main salon through automated sliding glass doors. This salon is set up with several unique conversation areas and plenty of space for entertaining guests. Forward is the galley done in the country kitchen style with a large banquette that faces aft and into the galley. To starboard in this space is a day head. To starboard is a staircase that leads to the staterooms below deck. This yacht features three comfortable staterooms, each with an en suite head. Additional accommodations are found forward and down a staircase from the galley. Here, you will find a double berth stateroom and a second stateroom with over/under bunks for more guests or crew members. This area also has a shared head.

Aft Deck

Fiberglass deck w/teak overlay Varnished teak table w/cover & dual stainless steel mounts w/adjustable height 5 Person bench seat w/removable cushions & cover (2) Overhead stereo speakers (5) Teak tread steps to swim platform both port & starboard w/courtesy lights Hinged stainless steel gate at top of swim platform steps Electric eye for sliding stainless steel entry door to Salon (2) Maxwell 2200 stern line handling capstans w/foot switches 6 Step Marquipt sea stairs hidden in custom portside locker Fresh water wash down Steps to Flybridge w/stainless steel handrail Storage lockers in starboard pilaster & under Flybridge steps Portside fiberglass bar cabinet w/sink Non skid fiberglass Integral swim platform (4) Stainless steel hoop rails at aft end of swim platform Freshwater hot & cold shower in locker to portside Centerline watertight Engine Room door (2) Stern cleats on swim platform

Salon

The main salon is designed with a non-traditional furniture arrangement making it seem more like a chic lounge than a living room. As you enter, to port is a seating area made up of a love

seat and sofa done in a bone colored leather and in between which there is a lovely display nook with a raised counter and overhead lights that currently highlight one of the owners' many gorgeous sculptures. This display area is the perfect space for you to place your most prized art pieces. A centrally located ottoman and several blue and tan throw pillows accentuate this area. To starboard is another seating and entertainment area with an aqua blue arm chair situated next to a large high-gloss cherry display counter that conceals a 42" Panasonic Plasma TV on a high/lo lift system. Forward and to port is a spacious dining area with a built-in banquette, round glass dining table and several parsons' chairs. This main salon lends itself entirely to your pure enjoyment. Other features that round out the impressive accommodations include, fine high-gloss cherry wood throughout, and a full audio-visual package.

Galley

The Country Kitchen style Galley area is forward of the Salon but well separated via a wide Companionway. To port is the L shaped Galley with very unique granite countertops, large side and forward windows and a very useful center island. Two swivel bar stools offer additional seating at the island. Forward is a built in L shaped settee for five with an Ultra Leather seating surface and an upholstered back. The settee is raised for a better exterior view. The table is smoked glass with a cherry and stainless steel base. There is ample storage below the cushions. Three large windows forward are covered with electrically operated pleated shades. A Pantograph door leads from the starboard side deck, perfect for loading the Galley with groceries!

Galley equipment includes: Varnished teak & holly sole Deep stainless steel sink w/Grohe faucet w/spray faucet Garbage disposal GE Profile 4 burner Ceran top cook top GE Stainless steel Profile Advantium microwave convection oven GE Triton stainless steel dishwasher GE Profile stainless steel trash compactor GE Profile Performance stainless steel side by side refrigerator/freezer Faber slide out vent hood w/light Island cabinet w/granite top & (2) swing out stools 20" built in LCD TV Central vacuum outlet (2) Stereo speakers Digital AC controls

Day Head

Day Head - Main Deck. The bow front vanity has a double door cabinet below and an under mount china sink in the Emperdor Dark marble countertop above. A beveled edge mirror is above the sink.

Skylounge

The enclosed Pilothouse/Sky Lounge is reached from the steps adjacent to the Galley. The helm is on centerline. Being the only fixed helm aboard it contains all of the navigation gear which is both well laid out and very complete for a yacht of this size. Aft to port is a marble topped two level bar with a refrigerator/freezer and icemaker behind a cherry door, an under mount Kohler bar sink, two storage cabinets and two swivel barstools on stainless steel bases. Aft is an L

shaped settee with storage below and a cherry and glass coffee table. Large side and aft windows are covered with Roman shades. A large stainless steel sliding door leading to a Boat Deck. **Day Head in Sky Lounge** A bow front vanity with two cabinet doors below, a marble top with an under mount Kohler sink and a large cabinet and beveled mirror above. The toilet is a black Head Hunter head. The sole is teak and holly and the overhead is mirrored. A large side window is covered with Roman shades. Back in the Sky Lounge, next forward is a cherry cabinet with a burl wood top that has a pop up 37" plasma TV with two storage cabinets in front. **Pilothouse Equipment:** (2) Black leather Stidd helm chairs 6" Danforth Constellation magnetic compass (2) Caterpillar digital engine displays (3) 17" Samsung flat screen displays for radar/plotter/CCTV Raymarine ST60 digital/analog wind display (2) Raymarine ST60 digital depth sounders (2) Standard Horizon Spectrum Plus w/DSS VHF radios (2) ACR RCL 100 searchlight controls (2) Maxwell windlass controls Bennett trim tab controls w/LED indicators (2) Raymarine RN300 GPS units Raymarine ST7001+ autopilot Naiad stabilizer Multisea II control panel Raymarine ST60 rudder angle indicator Naiad joystick bow thruster control Stern thruster control Glendinning engine controls Elbex closed circuit TV controls Bilge pump control panel w/indicator & alarm Nobeltec charting software Nobeltec 4.5 PC radar KVH Tracvision (3) Windshield wiper controls w/washers Glendinning wired handheld remote w/bow & stern thruster controls (4) Electric Wema fuel tank gauges (2) Electric Wema water tank gauges Central vacuum outlet

Boat Deck

Fiberglass non skid deck (2) Polyplaner Stereo speakers in overhang 30" Life ring ACR Sat 406 EPIRB w/hydrostatic release Fiberglass cabinet w/stainless steel sink, hot & cold taps, and an electric grill w/exhaust fan & storage cabinets Removable 7 step stainless steel ladder to Wheelhouse hardtop Glass & stainless steel sliding hatch over Aft Deck stairway 1600 lb. Quick Lift davit with hydraulic rotation(2) Aft facing floodlights on Boat Deck Stainless steel flag pole Aft facing quartz light on mast

Lower Foyer

At the base of the steps going aft is the double door access to the Master Suite. Forward are two doors concealing the GE Spacemaker stacked washer and dryer (the second one aboard). To both port and starboard are entrances to the two Guest Suites. The sole of this area is carpet inlaid into a black granite and Emperdor Dark marble border. The overhead has a small oval tray inset with both rope lights and halogen mini spots. A marble and cherry shelf to port has artwork hanging above.

Master Stateroom

The Master Cabin of the 78' Hargrave is spectacular. Entering through arched double cherry doors the berth is on the aft bulkhead framed with two burl wood columns flanking five beveled

edge smoked mirrored panels, the outer two with attractive sconce lights. The berth is king size with burl wood topped nightstands either side with storage cabinets below. On both the port and starboard sides of the berth are large burl wood drawers. At the foot of the berth is a cherry cabinet with a pop up 24" TV with a large upholstered stool next forward. On either side of the nightstands are access doors to the His and Her Heads, which has a Jacuzzi tub and shower. To the port side of the cabin is a bow front chest of twelve drawers with a burl wood top. Above are three sliding Soji screen panels that cover two opening stainless steel portholes. Next forward is a full size cedar lined auto lit hanging locker. On the forward bulkhead is a cherry bar cabinet with a burl wood top and a refrigerator/icemaker behind a cherry door, a storage cabinet, a hinged top over a Kohler bar sink and two cabinets above for additional storage.

VIP Stateroom 1

The port VIP Stateroom has a queen berth against the outboard bulkhead. Inboard is a large black marble topped nightstand with one large drawer below and a smoked beveled mirror panel with a sconce light above. A mirrored soffit with two reading lights is over the head of the berth. Outboard are six cherry storage cabinets and an opening stainless steel porthole with a Roman shade. At the foot of the berth is a built in 5" LCD TV, an AM/FM/CD/DVD player with remote and a cedar lined hanging locker with auto light. **VIP Head**The VIP Head has a black marble sole that matches the vanity top. The bow front cherry vanity has two storage cabinets below, two small cabinets above and a beveled edge mirrored medicine cabinet as well as Roman shades over an opening stainless steel porthole. The stall shower has a clear tempered glass bifold door, a teak grate sole, a marble seat, a handheld or wall mounted shower fixture and a light.

Twin Stateroom

The Starboard Guest Cabin has two over under berths outboard. Below the lower berth are two large storage drawers. Each berth has a reading light. The lower berth has a nightstand with a cabinet and a burl wood top. At the foot of the berth is a full size cedar lined auto lit hanging locker. Inboard is a chest of six cherry drawers with a burl wood top, a built in 15" LCD TV and a beveled mirror panel. **Starboard Side Guest Head**The sole of the Head is varnished teak and holly. The bow front vanity has two cabinet doors below and a Kohler under mount sink below the white marble countertop. The stall shower has a bifold tempered glass door, a marble seat, a light, a teak grate sole and a handheld or wall mountable fixture.

Crew Quarters /Forward Staterooms

The crew quarters /Forward Staterooms are nicely appointed and easily accessed via a staircase from the galley. There is a separate captain's stateroom with a double bed and lots of storage space, and an additional stateroom with over/under bunks and ample storage as well. A shared head is just aft of the staterooms featuring a full shower. As mentioned earlier, this yacht was

originally designed for a cruising couple with 1 or 2 crew.

The forward staterooms can be easily used as guest staterooms if traveling without crew.

Lazarette

Lazarette is accessed by a large hatch in the swim platform. Equipment includes: (2) Hydraulic steering actuators Autopilot feedback sensor (2) DC Hold lights High water alarm Sump tank w/auto/electric bilge pump Trim tab reservoir & control unit Electric stern thruster (2) Underwater lights

Foredeck

Fiberglass non skid decks (2) Maxwell 3500 anchor windlasses under fiberglass raised hinged cover w/(4) deck switches on deck (2) 100 lb. Airtex stainless steel Plow anchors w/approx. 200' chain each Raised fiberglass bulwarks w/over sized stainless steel bow rails Airtex stainless steel cleats Port & starboard storage lockers in trunk cabin (2) Large access hatches into anchor lockers Port & starboard boarding gates w/hinged rail section Starboard side entry door into Galley area Dual spring line cleats port & starboard Bow seating area & Sun Lounge area on forward trunk cabin w/removable cushions & cover (2) Escape hatches from bow staterooms Fresh water wash down Starboard side locker w/50 amp 220 volt shore cord inlet, TV/telephone inlet & par shore water inlet Wide walk around side decks

Engine Room

(3) Teak steps leading down from swim platform Sea Fire fire suppression cylinders Hydraulic steering reservoir w/pressure gauge & oil coolers Reverso 6 point oil change pump w/manifold Naiad hydraulic bow thruster system Naiad 254 roll stabilizer system w/9 square foot fins Articulating closed circuit TV camera (4) AC fluorescent lights (4) DC incandescent lights Dripless shaft seals on main shafts 100 Amp cablemaster shore power cord on reel w/port & starboard entry tubes (2) CAT gauge panels w/manual gauges CAT engine hour meters Freshwater spigot w/hose (3) Air conditioning & water circulation pumps (8) Cruiseair Air conditioning compressors Dual Racor 900 fuel filters for each engine w/vacuum gauges Dual Racor 500 fuel filters for each generator Glendinning engine controls GFCI outlet in Engine Room Hand operated bilge pump Fuel transfer pump w/Fill Rite meter Head Hunter Tidal Wave waste treatment system High water alarm sensor Nutone central vacuum unit Workbench w/sink, vise w/(5) drawers & a cabinet (3) Automatic sump pumps 3" Stainless steel prop shafts (7) Fuel tanks as follows: 686 g under Master Stateroom 576 g under Forward Companionway 2 x 308 g in Engine Room 2 x 297 g in Engine Room 115 g as day tank in Engine Room Sea Recovery 1200 GPD watermaker 110 Volt air compressor Underwater exhaust (2) Underwater lights Hydraulic steering 24 Volt Groco water pressure pump (4) Step Marquipt vertical boarding ladder

Electrical Equipment

Northern Lights 32 kw generator in sound shield (Port 2100 hrs) Northern Lights 32 kw generator in sound shield (Starboard 2300 hrs) (2) Generator gauge panels w/start/stop controls (4) 8D 12 volt batteries for engine starting (24V), March 2020 (4) 8D 12 volt batteries for ship's service (24V), August 2019 (4) 8D 12 volt batteries for inverter system (2) 4D 12 volt batteries for generator starting (2) 8D batteries for windlass located forward (2) 8D batteries for stern thruster 50 Amp Acme shore power transformer 100 Amp Acme shore power transformer Shore power main inlet breakers Dolphin 24 volt 100 amp ship's service battery charger Dolphin 24 volt 50 amp windlass/stern thruster battery charger Dolphin 24 volt 80 amp engine battery charger Dolphin 24 volt 80 amp charger for inverter system Dolphin 12 volt 30 amp charger for generator batteries (4) Battery cut off switches (2) Battery parallel switches Generator start/stop controls at main electrical panel (3) Power management rotor switches at main electrical panel Main AC panel w/220 volt Bus #1 w/digital volt & amp meter & (12) breaker protected circuits Main AC panel w/220 volt Bus #2 w/digital volt & amp meter & (16) breaker protected circuits Main panel w/110 volt Bus #1A, 1B, 2A, 2B, each w/digital volt & amp meters & a total of (32) breaker protected circuits Main panel inverter Bus w/digital volt & amp meter & (10) breaker protected circuits Main panel 24 volt system w/digital volt & amp meters & (20) breaker protected circuits

Recent Refits and upgrades

Major service of stabilizers incl. seals, pins, etc. August 2019

August 2019:

- a. General maintenance and bottom painting
- b. Forward windows on main deck re-bedded
- c. Stress cracks in gelcoat repaired
- d. New house batteries

2015 MECHANICAL UPGRADES:

- New steering controls
- New stabilizer hoses and seals
- New cooling pump
- New bilge pump and float switch

New exhaust

New water heater and fittings

New sight tubes

New watermaker

New fittings forward fuel tanks

New Transmission

New strainers

New stern thruster

SERVICE 2015:

Wired for underwater lights

Rebuilt fuel transfer pump

Metalize shafts

Engines aligned

Bottom job

Reconditioned Spur Cutters

FEATURES 2015:

Installed teak steps on aft deck

New bow seat cover

New aft deck screen

New settee upholstery in galley

Improvements in Master Stateroom decor

Exclusions

Owner's personal effects, art work and statues are not included. A detailed list is available prior to any written offer.

Disclaimer

The Company offers the details of this vessel in good faith but cannot guarantee or warrant the accuracy of this information nor warrant the condition of the vessel. A buyer should instruct his agents, or his surveyors, to investigate such details as the buyer desires validated. This vessel is offered subject to prior sale, price change, or withdrawal without notice.

Exclusions

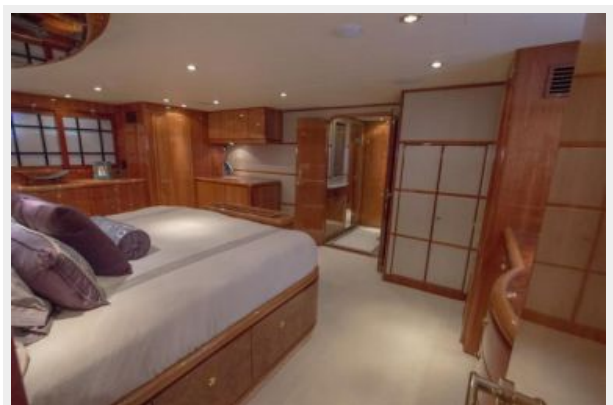
Owner's personal belongings.

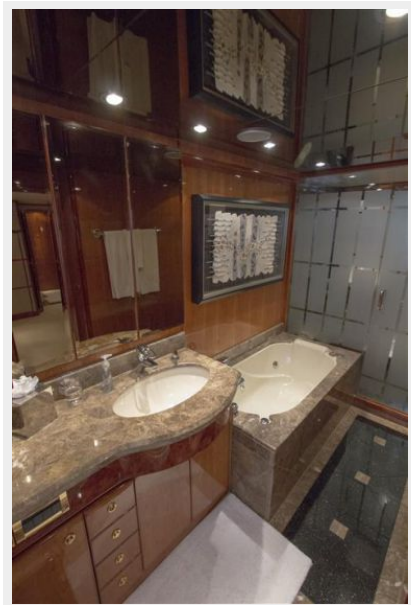
Disclaimer

The Company offers the details of this vessel or yacht in good faith but cannot guarantee or warrant the accuracy of this information nor warrant the condition of the vessel. A buyer should instruct his representatives, agents, or his surveyors, to investigate such details as the buyer desires validated. This vessel or yacht is offered subject to prior sale, price change, or withdrawal without notice.

PHOTOS

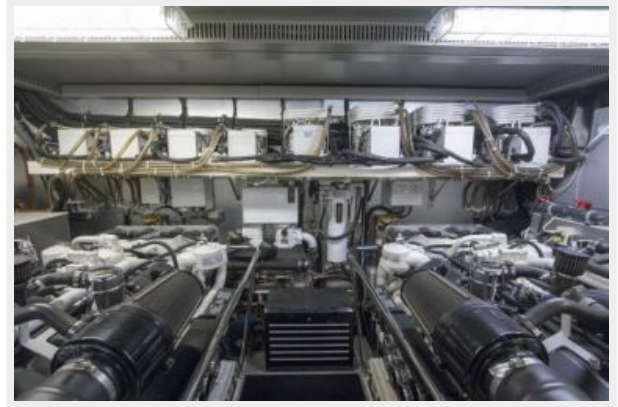




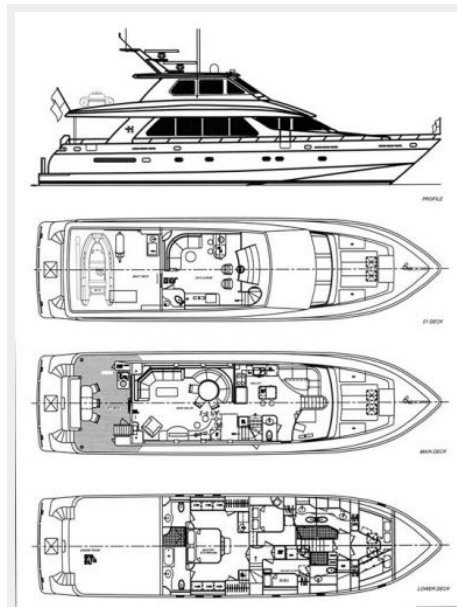








Shekinah Glory General Arrangement



CONTACTS

Andrey Shestakov, leading yacht broker of the sales department of Shestakov Yacht Sales Inc. Shestakov Yacht Sales Inc., the official representative of the Miami/Fort Lauderdale FL headquarters.

Contact details

Email: andrey@shestakovyachtsales.com

Web: shestakovyachtsales.com/en/

Telephones

USA: +1(954)274-4435

Office hours

Monday – Saturday: **9:00 - 21:00** EDT

Sunday: **closed**

Address



Harbour Towne Marina, 850 NE 3rd St,
STE 213, Dania, FL 33004