

WENDY 1 — OCEAN YACHTS



Builder: [Ocean Yachts](#)

Year Built: 1996

Model: Sport Fisherman

Price: PRICE ON APPLICATION

Location: United States

LOA: 66' 0" (20.12m)

Beam: 17' 8" (5.38m)

Max Draft: 5' 0" (1.52m)

Cruise Speed: 24 Kts. (28 MPH)

Max Speed: 30 Kts. (35 MPH)

Our experienced yacht broker, Andrey Shestakov, will help you choose and buy a yacht that best suits your needs **WENDY 1 — Ocean Yachts** from our catalogue. Presently, at **Shestakov Yacht Sales Inc.**, we have a wide variety of yachts available on our sale's list. We also work in close contact with all the big yacht manufacturers from all over the world.

If you would like to buy a yacht **WENDY 1 — Ocean Yachts** or would like help answering any questions concerning purchasing, selling or chartering a yacht, please call **+1(954)274-4435**

TABLE OF CONTENTS

| | |
|------------------------------|----|
| TABLE OF CONTENTS | 2 |
| SPECIFICATIONS | 4 |
| Overview | 4 |
| Basic Information | 4 |
| Dimensions | 4 |
| Speed, Capacities and Weight | 4 |
| Accommodations | 4 |
| Hull and Deck Information | 5 |
| Engine Information | 5 |
| DETAILED INFORMATION | 6 |
| Accommodations | 6 |
| Salon | 6 |
| Galley | 6 |
| Master Stateroom | 7 |
| Master Head | 7 |
| VIP Stateroom | 7 |
| Guest Stateroom / Port | 8 |
| Guest Stateroom / Starboard | 8 |
| Bow | 8 |
| Flybridge | 8 |
| Engine Room | 9 |
| Remarks | 10 |
| Exclusions | 10 |
| Exclusions | 10 |
| Disclaimer | 10 |
| PHOTOS | 11 |
| Salon | 11 |
| Salon | 11 |

| | |
|-----------------------------|----|
| Galley | 11 |
| Galley | 11 |
| Dinette | 11 |
| Companionway | 11 |
| Master Stateroom | 12 |
| Master Stateroom | 12 |
| Master Head | 12 |
| VIP Stateroom | 12 |
| VIP Head | 13 |
| VIP Stateroom | 13 |
| Guest Stateroom / Port | 13 |
| Guest Head / Port | 13 |
| Guest Stateroom / Starboard | 14 |
| Guest Head / Starboard | 14 |
| Flybridge / Helm | 14 |
| Flybridge / Seating | 14 |
| Flybridge / Seating | 14 |
| Bow | 14 |
| Cockpit | 15 |
| Engine Room | 15 |
| Engine Room | 15 |
| Aft View | 15 |
| CONTACTS | 16 |
| Contact details | 16 |
| Telephones | 16 |
| Office hours | 16 |
| Address | 16 |

SPECIFICATIONS

Overview

“Wendy 1” features a four-stateroom interior with a large Flybridge with wrap-around lounge seating and cockpit.

Basic Information

| | |
|---------------------------|------------------------|
| Category: Sport Fisherman | Model Year: 1996 |
| Year Built: 1996 | Country: United States |
| Fly Bridge: Yes | Cockpit: Yes |

Dimensions

| | |
|--------------------------|----------------------|
| LOA: 66' 0" (20.12m) | Beam: 17' 8" (5.38m) |
| Max Draft: 5' 0" (1.52m) | |

Speed, Capacities and Weight

| | |
|--------------------------------|-----------------------------|
| Cruise Speed: 24 Kts. (28 MPH) | Max Speed: 30 Kts. (35 MPH) |
| Displacement: 80000 Pounds | Water Capacity: 300 Gallons |
| Fuel Capacity: 1400 Gallons | |

Accommodations

| | |
|-----------------|-----------|
| Total Cabins: 4 | Sleeps: 8 |
| Total Heads: 4 | |

Hull and Deck Information

Hull Material: Fiberglass

Hull Configuration: Modified V-Hull

Engine Information

Engines: 2

Manufacturer: Caterpillar

Model: 3412

Engine Type: Inboard

Fuel Type: Diesel

DETAILED INFORMATION

Accommodations

"WENDY 1" features a four-stateroom interior with a large Flybridge with wrap-around lounge seating and cockpit.

Upgrades / Improvements in 2014:

- New Carpeting throughout
- New Window treatments
- New LG 3-Door refrigerator
- Wallpaper throughout
- New Mattresses and bedding
- New Samsung TV's with Blu Ray
- New Satellite receiver
- Teak refinished
- Windows resealed

Salon

- Teak coffee table with storage underneath
- L-Shaped leather sofa with storage, port
- Loveseat with storage, forward
- Teak wood interior
- Ice maker to starboard with wet bar
- Entertainment system to starboard
- Samsung LCD with Blu-Ray disc player
- Bose system
- Direct TV box
- SAT box
- Storage cabinet to starboard
- Fabric covered Lambrequins
- Silhouette blinds
- Overhead lighting
- New carpeting

Galley

- Teak & Holly sole

- LG 3-Door stainless steel double-door refrigerator with freezer drawer and icemaker
- U-Shaped dinette to starboard
- Dishwasher
- Sharp microwave/convection oven
- Gaggenau 4-burner stove top
- Gaggenau oven
- Corian countertops
- Storage cabinets
- Garbage disposal
- Slide-out trash bin
- Toaster oven
- Galley drawers

Master Stateroom

- Full-Beam Master
- Centerline queen berth
- New mattress and bedding
- Samsung LCD TV with Blu-Ray disc player
- Mirrored storage cabinets, port & starboard
- Drawers and nightstands, port & starboard
- Overhead lighting
- Reading lights
- Lamps on nightstands, port & starboard
- Hanging locker to starboard
- New carpeting

Master Head

- En-suite head
- Oversized shower
- Teak & Holly sole
- Corian countertop
- Galley Maid head

VIP Stateroom

- Queen berth
- New mattress and bedding
- (2) Cedar hanging lockers
- Overhead lighting

- Overhead hatch
- Samsung LCD TV with Blu-Ray disc player
- Storage cabinets
- Nightstands
- En-suite head with shower
- Washer/dryer in companionway
- New carpeting

Guest Stateroom / Port

- Upper & lower berths
- New mattress and bedding
- Samsung LCD TV with Blu-Ray DVD player
- En-suite head & shower
- New carpeting

Guest Stateroom / Starboard

- Upper & lower berths
- New mattress and bedding
- Hanging locker
- Overhead lighting
- Drawers
- New carpeting

Bow

- Aluminum bow rail with (2) fender holders, port & starboard
- Aluminum hand rails on house
- Ideal windlass with Wildcat chain with cleat
- Fortress anchor
- (6) Person Avon life raft
- 1,000 lb. Marquipt davit to port

Flybridge

- Overhead hatch above helm
- Windows slide, port & starboard
- Teak helm chair
- Teak companion helm chair

- Robertson Autopilot
- ICOM VHF
- Northstar 958 Loran plotter
- Furuno radar
- Furuno color sounders
- Hummingbird GPS
- Windlass control
- Jabsco search light control
- (3) Windshield wipers
- Trim tabs
- Raymarine digital depth
- Ritchie compass
- Micro Commander engine controls
- Bow thruster
- Stern thruster
- Main engine exhaust temperature gauges
- Fuel gauges
- Volt meters
- Bilge pump active lights
- Caterpillar monitor control computer
- Granite bar top to port with stainless steel sink
- Icemaker
- Refrigerator
- Seating forward of helm, port & starboard with storage under
- Storage cabinet forward
- Wicker storage box
- Carpet
- Air conditioning
- Double sliding doors, aft
- Aluminum railings on bridge

Engine Room

- Sentry battery charger
- (2) 20kW Generator
- Air compressor
- Oil change system
- Dual Racor's on mains
- Spare shaft
- Crash pumps on main engines
- Glendinning power cords, port & starboard
- Fireboy engine room fire extinguisher system

Remarks

“Wendy 1” went through an extensive yard refit in 2014. Her experienced captain took over and went through most of her systems, updating them to current standards; in many cases re-engineering to simplify and improve.

Her interior was redone by Al La Mer to include new carpeting and new wall coverings throughout, new bedding, new mattresses, new galley appliances and new granite countertops on her Flybridge. Many custom features in her interior were improved to make her more desirable for today’s yachtsman.

A new KVVH3 Satellite television system was installed and her electronic package is upgraded. **“Wendy 1”** is in great condition and offers a potential buyer a great opportunity!

“WENDY 1” is located at our docks in Fort Lauderdale.

Exclusions

"WENDY 1" is a registered name and does not convey. The tender is not included in the sale of this vessel. Water maker is not working; current owner is not willing to repair. A detailed list of exclusions will be provided at the time of sale, upon request.

Exclusions

Owner's personal belongings.

Disclaimer

The Company offers the details of this vessel or yacht in good faith but cannot guarantee or warrant the accuracy of this information nor warrant the condition of the vessel. A buyer should instruct his representatives, agents, or his surveyors, to investigate such details as the buyer desires validated. This vessel or yacht is offered subject to prior sale, price change, or withdrawal without notice.

PHOTOS

Salon



Salon



Galley



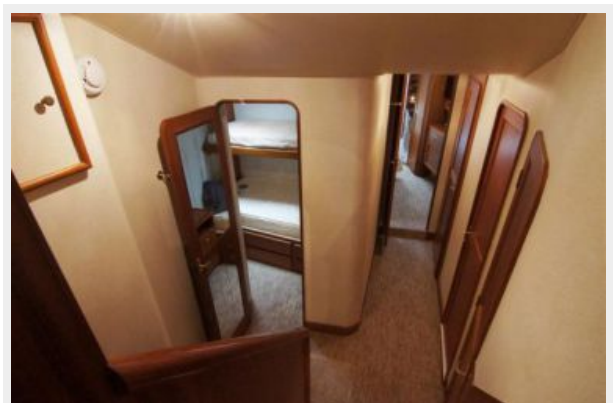
Galley



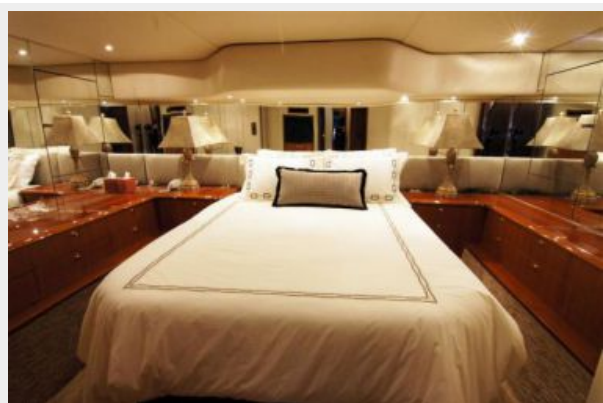
Dinette



Companionway



Master Stateroom



Master Stateroom



Master Head



VIP Stateroom



VIP Stateroom



VIP Head



Guest Stateroom / Port



Guest Head / Port



Guest Stateroom / Starboard



Guest Head / Starboard



Flybridge / Helm



Flybridge / Seating



Flybridge / Seating



Bow



Cockpit



Engine Room



Engine Room



Aft View



CONTACTS

Andrey Shestakov, leading yacht broker of the sales department of Shestakov Yacht Sales Inc. Shestakov Yacht Sales Inc., the official representative of the Miami/Fort Lauderdale FL headquarters.

Contact details

Email: **andrey@shestakovyachtsales.com**

Web: shestakovyachtsales.com/en/

Telephones

USA: **+1(954)274-4435**

Office hours

Monday – Saturday: **9:00 - 21:00 EDT**

Sunday: **closed**

Address



Harbour Towne Marina, 850 NE 3rd St,
STE 213, Dania, FL 33004