

B B KINGFISHER — BERTRAM



Builder: BERTRAM

Year Built: 1991

Model: Sport Fisherman

Price: PRICE ON APPLICATION

Location: St. Lucia

LOA: 60' 0" (18.29m)

Beam: 16' 11" (5.16m)

Max Draft: 5' 4" (1.63m)

Our experienced yacht broker, Andrey Shestakov, will help you choose and buy a yacht that best suits your needs **B B Kingfisher — BERTRAM** from our catalogue. Presently, at Shestakov Yacht Sales Inc., we have a wide variety of yachts available on our sale's list. We also work in close contact with all the big yacht manufacturers from all over the world.

If you would like to buy a yacht **B B Kingfisher — BERTRAM** or would like help answering any questions concerning purchasing, selling or chartering a yacht, please call **+1(954)274-4435**

TABLE OF CONTENTS

TABLE OF CONTENTS	2
SPECIFICATIONS	3
Overview	3
Basic Information	5
Dimensions	5
Speed, Capacities and Weight	5
Accommodations	5
Hull and Deck Information	5
Engine Information	6
PHOTOS	7
CONTACTS	9
Contact details	9
Telephones	9
Office hours	9
Address	9

SPECIFICATIONS

Overview

Interior

- Interior completely renovated in 2011 by Florida Yacht interiors
- Three cabins: two bunks and two staterooms: new carpet, wallpaper, bath fittings, beds, covers, pillows, flat screens in each stateroom
- Three heads: new fixtures and macerators

Salon and Galley

- Galley opened up - no dividing wall
- Granite countertops
- New under counter fridge/freezer
- New ice maker
- New dining table and coffee table
- New sofas with under cushion storage
- Flat screen TV
- Wine fridge

Electronics

- All new 2011
- Radar
- Raymarine Chartplotter
- Two VHF

Flybridge

- Two chairs
- New cushions in 2011
- New canvas in 2011

Engines

- Twin Detroit Diesel model 16v92TA located below salon 2x1400 HP S/N P-16VF008920, S-16VF012411
- Completely rebuilt: heads, pistons, injectors
- Hours: less than 200 each
- Dripless packing replaced in 2011
- All new hoses in 2011

- Two sets of propellers

Generator

- Two Onan fuel injected diesel generators: 15kW rebuilt in 2011, less than 400 hours

Electrical

- New step up transformer
- All batteries replaced since 2011
- Fresh Water: fresh water tank 250 gallons
- new water maker installed 2011
- 30 gallon hot water tank
- A/C: new a/c installed 2011

Cockpit

- Teak floor and gunwales installed 2012

Fishing Equipment

- Murray fighting chair
- Live bait well
- Wash down system
- Deep water electric reel receptacles
- Fish box
- Rupp outriggers
- Deep drop electric reels available
- Custom rods/reels available
- Teaser reels

Safety Equipment

- Auto inflated life raft
- Fire extinguishers
- 12 life jackets

Additional Equipment

- Tender with 40hp Yamaha
- Davit
- Camera system to record catches

Basic Information

Category: Sport Fisherman

Sub Category: Convertible

Model Year: 1991

Year Built: 1991

Refit Year: 2011

Country: St. Lucia

Fly Bridge: Yes

Dimensions

LOA: 60' 0" (18.29m)

Beam: 16' 11" (5.16m)

Max Draft: 5' 4" (1.63m)

Speed, Capacities and Weight

Displacement: 85000 Pounds

Water Capacity: 250 Gallons

Holding Tank: 75 Gallons

Fuel Capacity: 1300 Gallons

Accommodations

Total Cabins: 3

Total Heads: 3

Hull and Deck Information

Hull Material: Fiberglass

Engine Information

Engines: 2

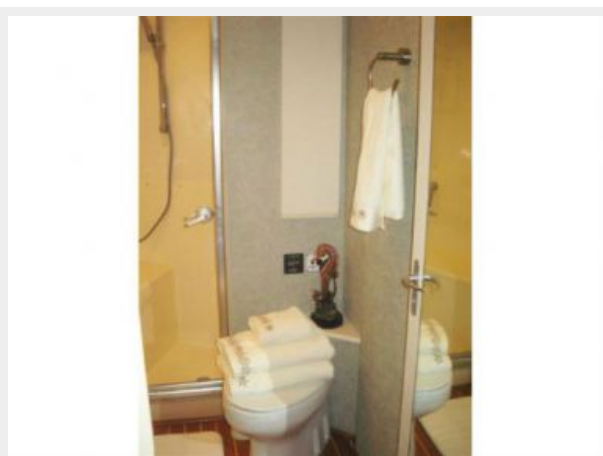
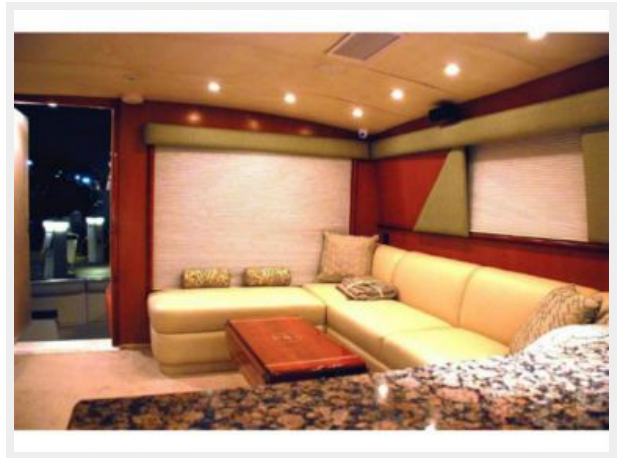
Manufacturer: Detroit Diesel

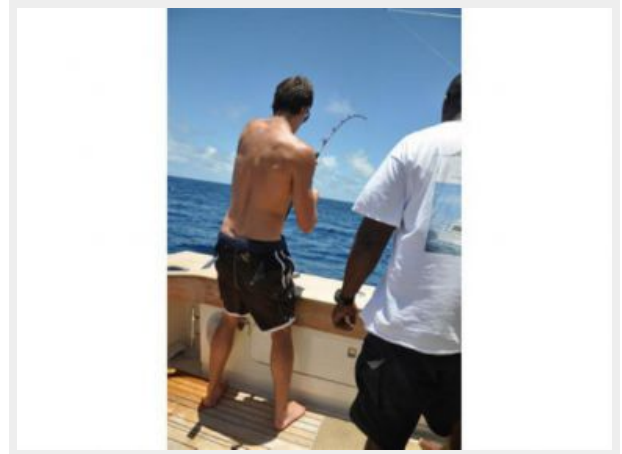
Model: 16V92 TA

Engine Type: Inboard

Fuel Type: Diesel

PHOTOS





CONTACTS

Andrey Shestakov, leading yacht broker of the sales department of Shestakov Yacht Sales Inc. Shestakov Yacht Sales Inc., the official representative of the Miami/Fort Lauderdale FL headquarters.

Contact details

Email: andrey@shestakovyachtsales.com

Web: shestakovyachtsales.com/en/

Telephones

USA: +1(954)274-4435

Office hours

Monday – Saturday: **9:00 - 21:00** EDT

Sunday: **closed**

Address



Harbour Towne Marina, 850 NE 3rd St,
STE 213, Dania, FL 33004