

IMPELLERS — AZIMUT



Builder: [AZIMUT](#)

Year Built: 2001

Model: Motor Yacht

Price: PRICE ON APPLICATION

Location: United States

LOA: 73' 0" (22.25m)

Beam: 18' 4" (5.59m)

Min Draft: 5' 0" (1.52m)

Cruise Speed: 20 Kts. (23 MPH)

Max Speed: 25 Kts. (29 MPH)

Our experienced yacht broker, Andrey Shestakov, will help you choose and buy a yacht that best suits your needs **Impellers — AZIMUT** from our catalogue. Presently, at Shestakov Yacht Sales Inc., we have a wide variety of yachts available on our sale's list. We also work in close contact with all the big yacht manufacturers from all over the world.

If you would like to buy a yacht **Impellers — AZIMUT** or would like help answering any questions concerning purchasing, selling or chartering a yacht, please call **+1(954)274-4435**

TABLE OF CONTENTS

TABLE OF CONTENTS	2
SPECIFICATIONS	3
Basic Information	3
Dimensions	3
Speed, Capacities and Weight	3
Accommodations	3
Hull and Deck Information	3
Engine Information	4
DETAILED INFORMATION	5
Overview	5
Additional Features	5
Outside Decks	5
Galley	5
Helm Stations	6
Electrical Equipment	6
Engine & Mechanical	6
Exclusions	6
Disclaimer	6
PHOTOS	7
CONTACTS	14
Contact details	14
Telephones	14
Office hours	14
Address	14

SPECIFICATIONS

Basic Information

Category: Motor Yacht

Model Year: 2001

Year Built: 2001

Refit Year: 2010

Country: United States

Vessel Top: 2351

Fly Bridge: Yes

Dimensions

LOA: 73' 0" (22.25m)

Beam: 18' 4" (5.59m)

Min Draft: 5' 0" (1.52m)

Speed, Capacities and Weight

Cruise Speed: 20 Kts. (23 MPH)

Max Speed: 25 Kts. (29 MPH)

Water Capacity: 300 Gallons

Holding Tank: 55 Gallons

Accommodations

Total Cabins: 3

Total Heads: 3

Crew Cabin: 1

Hull and Deck Information

Hull Material: Fiberglass

Engine Information

Engines: 2

Manufacturer: MTU

Model: 12V183TE93

Engine Type: Inboard

Fuel Type: Diesel

DETAILED INFORMATION

Overview

Conceived in our firm belief that today's discerning yacht buyer demands not only the highest standards of design and construction, but the greatest possible value for money, "IMPELLERS" is the supreme synthesis of superior Italian design, classic craftsmanship and leading edge engineering. Sleek and stylish, at 73ft, the "IMPELLERS" has the performance and personality seldom found on yachts like this. She's in a class of her own. With a hull shape that delivers the best semi-displacement characteristics throughout her speed range, she'll calmly cruise with incredible fuel efficiency at low revs or surge majestically at high revs in a dry semi-planing style – all the time stabilized for perfect trim – and passenger comfort and safety.

This beautiful Italian built 1994 Pinifarini was extensively refit in 2010 and extended to 73', style updated and painted (Awlgrip) to include large aft deck, swim platform and crew quarters. The new aft deck features large mahogany dining table with seating for 10 guests. This area is further enhanced by new teak decking.. 12" diameter polished stainless table support. 6" diameter stainless ceiling columns, modern glass/ stainless steel sliding doors to the salon.

Additional Features

- Low Engine Hours (205) since SMOH. Over hauled by MTU Certified 205 hours due to ingesting fire retardant when auto fire extinguishing system triggered unintentionally after approx. 954 hours original engine time. All records available.
- (2) Atlas Voltage Frequency Converters (400 / 220)
- Bow and Stern Thrusters
- Euro Style Stainless Steel / Teak Retractable Passerelle to be installed
- Two King size beds
- In water transom designed and reinforced for future Diesel Auxillary Drive System.

Outside Decks

Teak sidedecks Deck Hardware - Stainless Steel Hydraulic gangway Cockpit table Davits
Cockpit shower Gangway Anchor windlass remote at both upper and lower stations Ground
Tackle - 100lb. Stainless Steel Suncor Plowmaster Anchor w/ 250 ft. chain

Galley

Deep freezer Refrigerator Oven Panasonic Microwave Frigidaire Dishwasher Thermadore Trash
Compactor Kenmore Garbage Disposal Hot water

Helm Stations

Steering Gear - Hydraulic and power assist Trim Tabs - Hydraulic with Indicators

Electrical Equipment

Atlas voltage & frequency converter 2 Kohler Generators 20 KW each. 1900 Hours / 120 / 240
Voltage Batteries (14) 12 Volt for 12 and 24 volt System Battery Parallel System Battery charger
Electric bilge pump Air compressor Shore power inlet Electric heads

Engine & Mechanical

Twin MTU Diesel Engines @ 1150hp, 12V183TE93, original engines, 205 hours Estimated
speeds 20/ 25 kts. Serial # (Port) 444 901 502 016074 (Starboard) 444 901 502 016073 ZF
Transmissions - Serial # Port 2541 Starboard # 2542 Glendining Engine Synchronizer Manual
bilge pump Sea water pump Heating Battery charger Fresh water maker Air conditioning Electric
bilge pump Air compressor Bow & stern thruster

Exclusions

Owner's personal belongings.

Disclaimer

The Company offers the details of this vessel or yacht in good faith but cannot guarantee or warrant the accuracy of this information nor warrant the condition of the vessel. A buyer should instruct his representatives, agents, or his surveyors, to investigate such details as the buyer desires validated. This vessel or yacht is offered subject to prior sale, price change, or withdrawal without notice.

PHOTOS

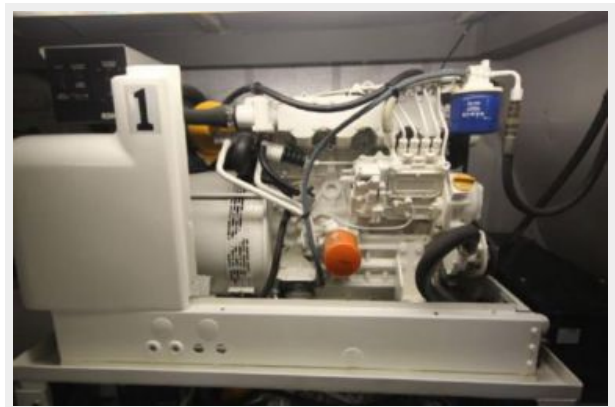
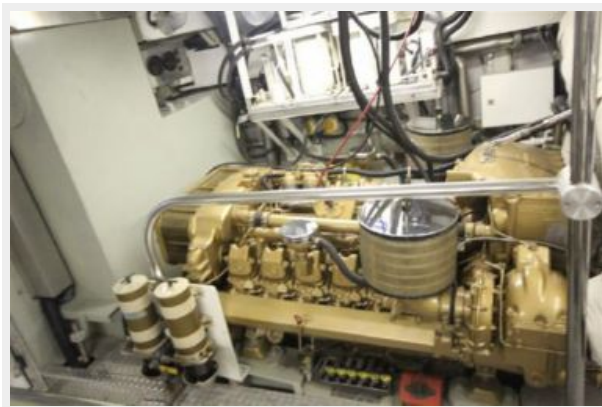
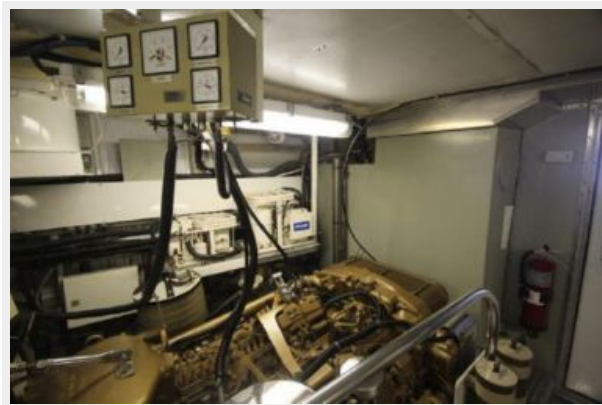
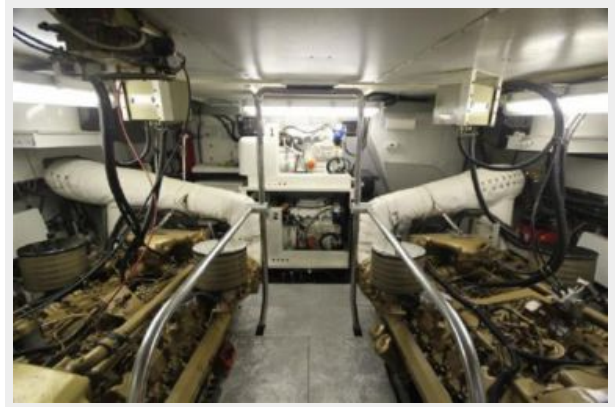














CONTACTS

Andrey Shestakov, leading yacht broker of the sales department of Shestakov Yacht Sales Inc. Shestakov Yacht Sales Inc., the official representative of the Miami/Fort Lauderdale FL headquarters.

Contact details

Email: andrey@shestakovyachtsales.com

Web: shestakovyachtsales.com/en/

Telephones

USA: +1(954)274-4435

Office hours

Monday – Saturday: **9:00 - 21:00** EDT

Sunday: **closed**

Address



Harbour Towne Marina, 850 NE 3rd St,
STE 213, Dania, FL 33004