

## LADY ANN II — CRUISERS YACHTS



**Builder:** [Cruisers Yachts](#)

**Year Built:** 2004

**Model:** Motor Yacht

**Price:** PRICE ON APPLICATION

**Location:** United States

**LOA:** 45' 0" (13.72m)

**Beam:** 15' 3" (4.65m)

**Max Draft:** 3' 3" (0.99m)

**Cruise Speed:** 22 Kts. (25 MPH)

Our experienced yacht broker, Andrey Shestakov, will help you choose and buy a yacht that best suits your needs **Lady Ann II — Cruisers Yachts** from our catalogue. Presently, at Shestakov Yacht Sales Inc., we have a wide variety of yachts available on our sale's list. We also work in close contact with all the big yacht manufacturers from all over the world.

If you would like to buy a yacht **Lady Ann II — Cruisers Yachts** or would like help answering any questions concerning purchasing, selling or chartering a yacht, please call **+1(954)274-4435**

# TABLE OF CONTENTS

---

TABLE OF CONTENTS	2
SPECIFICATIONS	4
Overview	4
Basic Information	5
Dimensions	5
Speed, Capacities and Weight	5
Accommodations	5
Hull and Deck Information	5
Engine Information	6
DETAILED INFORMATION	7
Vessel Walkthrough	7
Salon	7
Galley and Dinette	8
Master Stateroom	8
Master Head	9
VIP Stateroom	9
Guest Stateroom	9
Helm Deck	9
Electronics	10
Electrical Equipment	10
Mechanical	10
Hull and Deck	11
Broker Remarks	11
Exclusions	11
Exclusions	11
Disclaimer	11
PHOTOS	12
Salon Looking Aft	12

Salon View to Port	12
Entrance to Forward Staterooms from Salon	12
Salon/Dinette	12
Galley	13
Master Stateroom	13
Master Stateroom Looking Forward	13
Master Stateroom Looking Forward	13
Master Stateroom Entrance to Jacuzzi Tub	14
Master Head	14
VIP Stateroom	14
VIP Storage and Entertainment	14
Guest Head	15
Guest Stateroom Bunks	15
Helm Guest Seating	15
Helm Electronics	15
Flybridge-Aft Seating and Deck	16
Flybridge Sunroof and Hardtop	16
Hull -Aft Profile	16
Port Engine	16
Starboard Engine	16
<b>CONTACTS</b>	<b>18</b>
Contact details	18
Telephones	18
Office hours	18
Address	18

---

# SPECIFICATIONS

---

## Overview

---

Lady Ann II is a very well-kept example of the Cruisers 455 Express Motoryacht, the big sister of the popular 405 Express Motoryacht. The cockpit features the kind of comfortable seating associated with traditional express boats - no separation between bridge and cockpit. A full express-style windshield provides exceptional wind and weather protection, while owners will also enjoy the benefits of the 455's hardtop enclosure, with wing doors on both sides, creating full weather enclosure. Lady Anne II also sports bridge deck AC/Heat, which gives her a year-round cruising capability not found in most other motoryachts!

Lady Ann II's raised aft deck can be accessed from the molded stairs coming off the swim platform or from either side gate. A full fiberglass hardtop with full enclosure plus dedicated bridge reverse cycle air conditioning creates a pleasant environment for extended time at the helm as well as creating an outside living space. The large aft deck includes built in seating much like you would expect in the cockpit area of an express cruiser. The bridge helm and the aft area are socially integrated, separated by only one step. Twin 480 HP Volvo diesels provide dependable power and good performance with a 21-24 knot cruise. A full complement of electronics, plus bow thruster controls are positioned at the helm, and the double helm seat allows you and your mate to enjoy your cruising experience.

Below, Lady Ann II will delight owners and guests alike. Behind that deceptively express exterior lies a voluminous aft cabin interior. The bright, airy salon offers a large convertible dinette, comfortable L-shaped sofa with double incliners and an incredible view of the water. A fully appointed galley with extra-large refrigerator/freezer makes meal preparation on the water a joy for the most discriminating gourmet. And, keeping the desired mood on board is made simple with the deluxe entertainment center and sound system. The luxurious master suite is located aft. It features an angled queen-size bed, generous storage and a large private head with adjoining jacuzzi tub, which is also accessible through a pair of lovely French doors. The forward stateroom features a queen-size bed, plenty of storage and a walk-in closet; it also includes private access to the main head and shower. To accommodate additional family members or onboard guests, a third stateroom with twin berths is located amidships. With plenty of room at the helm for her very functional electronics and efficient Volvo diesel power (with super low hours!), Lady Ann II is destined to excite the interest of cruising boaters who want the sleek styling and cockpit layout of an express, and the live-aboard comfort and luxury of an aft-cabin motoryacht.

Lady Ann II is priced to sell and is ready for a new home!

---

## Basic Information

---

**Category:** Motor Yacht

**Sub Category:** Aft Cabin

**Model Year:** 2004

**Year Built:** 2004

**Country:** United States

**Coast Guard #:** 1159366

**Vessel Top:** Hardtop

**Fly Bridge:** Yes

---

## Dimensions

---

**LOA:** 45' 0" (13.72m)

**Beam:** 15' 3" (4.65m)

**Max Draft:** 3' 3" (0.99m)

---

## Speed, Capacities and Weight

---

**Cruise Speed:** 22 Kts. (25 MPH)

**Water Capacity:** 140 Gallons

**Holding Tank:** 100 Gallons

**Fuel Capacity:** 500 Gallons

---

## Accommodations

---

**Total Cabins:** 3

**Total Berths:** 4

**Sleeps:** 9

**Total Heads:** 2

---

## Hull and Deck Information

---

**Hull Material:** Fiberglass

**Deck Material:** Fiberglass

**Hull Configuration:** Planing

**Hull Color:** WHITE

**Hull Finish:** Plastic

---

## Engine Information

---

**Engines:** 2

**Manufacturer:** Volvo Penta

**Model:** TAM75P

**Engine Type:** Inboard

**Fuel Type:** Diesel

---

# DETAILED INFORMATION

---

## Vessel Walkthrough

---

Lady Ann II is a very well-kept example of the Cruisers 455 Express Motoryacht, the big sister of the popular 405 Express Motoryacht. The cockpit features the kind of comfortable seating associated with traditional express boats - no separation between bridge and cockpit. A full express-style windshield provides exceptional wind and weather protection, while owners will also enjoy the benefits of the 455's hardtop enclosure, with wing doors on both sides, creating full weather enclosure. Lady Anne II also sports bridge deck AC/Heat, which gives her a year-round cruising capability not found in most other motoryachts!

Lady Ann II's raised aft deck can be accessed from the molded stairs coming off the swim platform or from either side gate. A full fiberglass hardtop with full enclosure plus dedicated bridge reverse cycle air conditioning creates a pleasant environment for extended time at the helm as well as creating an outside living space. The large aft deck includes built in seating much like you would expect in the cockpit area of an express cruiser. The bridge helm and the aft area are socially integrated, separated by only one step. Twin 480 HP Volvo diesels provide dependable power and good performance with a 21-24 knot cruise. A full complement of electronics, plus bow thruster controls are positioned at the helm, and the double helm seat allows you and your mate to enjoy your cruising experience.

Below, Lady Ann II will delight owners and guests alike. Behind that deceptively express exterior lies a voluminous aft cabin interior. The bright, airy salon offers a large convertible dinette, comfortable L-shaped sofa with double incliners and an incredible view of the water. A fully appointed galley with extra-large refrigerator/freezer makes meal preparation on the water a joy for the most discriminating gourmet. And, keeping the desired mood on board is made simple with the deluxe entertainment center and sound system. The luxurious master suite is located aft. It features an angled queen-size bed, generous storage and a large private head with adjoining jacuzzi tub, which is also accessible through a pair of lovely French doors. The forward stateroom features a queen-size bed, plenty of storage and a walk-in closet; it also includes private access to the main head and shower. To accommodate additional family members or onboard guests, a third stateroom with twin berths is located amidships. With plenty of room at the helm for her very functional electronics and efficient Volvo diesel power (with super low hours!), Lady Ann II is destined to excite the interest of cruising boaters who want the sleek styling and cockpit layout of an express, and the live-aboard comfort and luxury of an aft-cabin motoryacht.

Lady Ann II is priced to sell and is ready for a new home!

---

## Salon

---

- Entry door, sliding, lockable with screen
- Sofa, L-Shaped Ultra leather with double recliners
- Leather ottomans with storage (2)
- TV, 20" Sharp Flat screen
- Surround sound stereo AM/FM/CD/DVD system
- CD changer, 5 Disc
- Central vacuum system
- Dinette, U-Shaped Ultra leather with storage underneath
- Solid cherry dinette table
- Dual level side windows with curtains
- Cherry wood cabinetry
- Carpet and area rug
- Cherry step treads

---

## Galley and Dinette

---

- Ultraleather dinette w/storage under
- Solid cherry dinette table
- Bi-level windows w/curtains
- Double well stainless steel sinks
- Cherry cabinets and drawers
- Dishwasher
- Full size fridge w/separate freezer
- Electric 2 burner smooth top stove
- Microwave/convection oven
- Built-in coffee maker
- Corian-style countertops

---

## Master Stateroom

---

- Reading lights
- Carpet and curtains
- Linen closet, floor to ceiling
- Portlights, opening w/screens
- Queen island berth with inner spring mattress
- Custom bedspread, shams and pillows
- Cedar-lined hanging locker
- Plenty of storage cabinets and drawers
- Vanity w/mirror and stool
- Flatscreen TV
- French doors to whirlpool tub
- Large aft window with screen & privacy curtain



---

## Master Head

---

- Spacious jacuzzi tub and separate shower
- Vacuflush head
- Medicine cabinet with four mirrored doors
- Floor to ceiling linen closet
- Ceramic tile floor
- Solid surface counter top and integral sink

---

## VIP Stateroom

---

- Island queen berth with inner spring mattress
- Custom spreads and shams
- Storage underneath bed
- Reading lights
- Storage cabinets to port and starboard

---

## Guest Stateroom

---

- Twin berths with filler cushions
- Spreads and shams
- Storage underneath beds
- Reading lights
- Washer/dryer combo

---

## Helm Deck

---

- Hard top with full enclosure
- Skylight hatches
- Electronic engine controls
- Keyless ignition
- Double wide, adjustable helm seat
- Reverse cycle helm deck AC
- Stainless steel windshield with wipers and washers
- Helm station with gauges, instruments and controls
- Digital engine monitoring systems
- Tilt steering wheel
- Double wide companion lounge with integrated seating for ten
- Stereo speakers
- Removable carpet
- Two fiberglass cocktail tables

- Corian inserts for wet bar
- Storage below cockpit seating
- Plexi wing doors
- 110 volt GFCI outlet
- Wet bar with refrigerator/ice maker combo
- AM/FM/CD Sirius ready stereo with remote

---

## Electronics

---

- Raymarine RC400 GPS
- Raymarine RL80C chart/radar
- Raymarine SmartPilot autopilot
- Raymarine tridata speed/depth/trip display
- ICOM IC-M602 VHF
- Raymarine VHF 400
- Sidepower bow thruster controls
- Clarion CD/Stereo remote

---

## Electrical Equipment

---

- 240/120 volt AC System
- Master panel
- 12 volt DC System
- Generator 11.5kW with sound shield
- Battery isolator with parallel switch
- Battery Parallel Switches
- 240/120 volt AC System
- 12 volt DC System
- Battery isolator with parallel switch

---

## Mechanical

---

- 480 HP twin Volvo TAMD75P diesel engines
- Three Racor fuel filters
- Bilge pumps and auto float switches
- Blowers
- Bow thruster
- Oil exchanger system
- Trim tab system

- Raw water sea strainers (5)
- Automatic fire extinguisher system
- High water alarm
- Dripless shaft seals

---

## Hull and Deck

---

- Jabsco remote spotlight
- Aft cockpit seat
- Anchor roller with fresh water washdown, mooring cleat
- Windlass with remote and foredeck foot switches
- Anchor
- Stainless steel rails, bow, intermediate and stern
- Retractable shore power cord
- Transom shower, hot and cold
- Cable TV and phone connections
- Swim platform, full beam within deck storage
- Swim ladder
- Windshield, stainless steel frame

---

## Broker Remarks

---

Well-kept, low-hour yacht with motivated owners.

---

## Exclusions

---

Owner's personal effects.

---

## Exclusions

---

Owner's personal belongings.

---

## Disclaimer

---

The Company offers the details of this vessel or yacht in good faith but cannot guarantee or warrant the accuracy of this information nor warrant the condition of the vessel. A buyer should instruct his representatives, agents, or his surveyors, to investigate such details as the buyer desires validated. This vessel or yacht is offered subject to prior sale, price change, or withdrawal without notice.

# PHOTOS

**Salon View to Port**



**Salon Looking Aft**



**Entrance to Forward Staterooms from Salon**



**Salon/Dinette**



**Galley**



**Master Stateroom**



**Master Stateroom Looking Forward**



**Master Stateroom Looking Forward**



**Master Stateroom Entrance to Jacuzzi Tub**



**Master Head**



**VIP Storage and Entertainment**



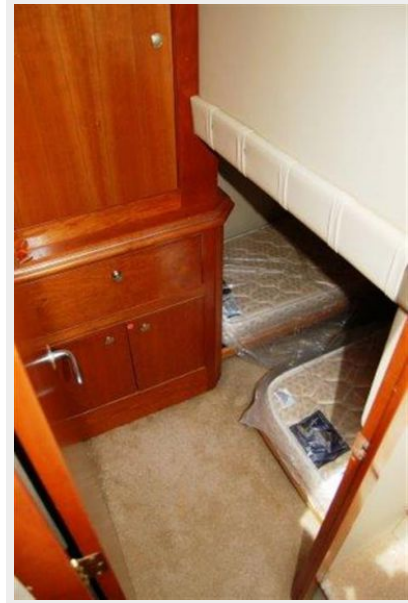
**VIP Stateroom**



**Guest Head**



**Guest Stateroom Bunks**



**Helm Electronics**



**Helm Guest Seating**



### Flybridge-Aft Seating and Deck



### Flybridge Sunroof and Hardtop



### Hull -Aft Profile



### Port Engine



### Starboard Engine







# CONTACTS

---

Andrey Shestakov, leading yacht broker of the sales department of Shestakov Yacht Sales Inc. Shestakov Yacht Sales Inc., the official representative of the Miami/Fort Lauderdale FL headquarters.

## Contact details

---

Email: [andrey@shestakovyachtsales.com](mailto:andrey@shestakovyachtsales.com)

Web: [shestakovyachtsales.com/en/](http://shestakovyachtsales.com/en/)

## Telephones

---

USA: +1(954)274-4435

## Office hours

---

Monday – Saturday: **9:00 - 21:00** EDT

Sunday: **closed**

## Address

---



Harbour Towne Marina, 850 NE 3rd St,  
STE 213, Dania, FL 33004