

## PATRICIA (EX. DENISE'S HOPE) — TIARA



**Builder:** TIARA

**Year Built:** 2004

**Model:** Cruiser

**Price:** PRICE ON APPLICATION

**Location:** United States

**LOA:** 38' 0" (11.58m)

**Beam:** 14' 2" (4.32m)

**Max Draft:** 3' 6" (1.07m)

**Max Speed:** 33 Kts. (38 MPH)

Our experienced yacht broker, Andrey Shestakov, will help you choose and buy a yacht that best suits your needs Patricia (Ex. Denise's Hope) — TIARA from our catalogue. Presently, at Shestakov Yacht Sales Inc., we have a wide variety of yachts available on our sale's list. We also work in close contact with all the big yacht manufacturers from all over the world.

If you would like to buy a yacht Patricia (Ex. Denise's Hope) — TIARA or would like help answering any questions concerning purchasing, selling or chartering a yacht, please call +1(954)274-4435

# TABLE OF CONTENTS

TABLE OF CONTENTS	2
SPECIFICATIONS	4
Overview	4
Basic Information	4
Dimensions	4
Speed, Capacities and Weight	4
Accommodations	5
Hull and Deck Information	5
Engine Information	5
DETAILED INFORMATION	6
Broker's Remarks	6
Salon	6
Galley	6
Master Stateroom	6
Head	6
Helm	6
Electronics	7
Deck Equipment	7
Electrical System	7
Mechanical Equipment	7
Exclusions	7
Exclusions	7
Disclaimer	8
PHOTOS	9
Dinette	9
Dinette	9
Galley	9
Galley	9

Master Stateroom	10
Master Stateroom	10
Head Access	10
Head	10
Shower	11
Helm	11
Helm Seat	11
Removable Helm Deck Table	11
Mezzanine Seating	11
Upper Cockpit	11
Cockpit	12
Cockpit	12
Cockpit Icemaker	12
Livewell	12
Shorepower	12
Genset	12
Batteries	13
Engine Room	13
Engine Room	13
Engine Room	13
Engine Room	13
Transom	13
CONTACTS	15
Contact details	15
Telephones	15
Office hours	15
Address	15

---

# SPECIFICATIONS

---

## Overview

---

This ultra clean Cummins powered 3800 Tiara Open is in perfect condition. The mechanical maintenance has been kept up to date and this coupled with a super clean interior and exterior makes this vessel extremely desirable. If you are a serious express buyer, this one should be at the top of your list to see. The current owner purchased her about a year ago from an original owner. The previous owner only used the boat in the winter months and then during the summer months it was taken out of the water and stored in an air conditioned garage. During the time it was not cruising, it was always kept on a lift at the owner's house. The current owner is moving up to a larger motor yacht.

## Basic Information

---

**Category:** Cruiser

**Sub Category:** Express

**Model Year:** 2004

**Year Built:** 2004

**Country:** United States

**Coast Guard #:** 1152885

**Cockpit:** Yes

## Dimensions

---

**LOA:** 38' 0" (11.58m)

**Beam:** 14' 2" (4.32m)

**Max Draft:** 3' 6" (1.07m)

## Speed, Capacities and Weight

---

**Max Speed:** 33 Kts. (38 MPH)

**Displacement:** 22500 Pounds

**Water Capacity:** 110 Gallons

**Holding Tank:** 40 Gallons

**Fuel Capacity:** 411 Gallons

---

## Accommodations

---

**Total Cabins:** 1

**Total Berths:** 2

**Sleeps:** 4

**Total Heads:** 1

---

## Hull and Deck Information

---

**Hull Material:** Fiberglass

**Deck Material:** Fiberglass

**Hull Configuration:** Modified Deep Vee

---

## Engine Information

---

**Engines:** 2

**Manufacturer:** Cummins

**Model:** 6CTA 8.3

**Engine Type:** Inboard

**Fuel Type:** Diesel

---

# DETAILED INFORMATION

---

## Broker's Remarks

---

This ultra clean Cummins powered 3800 Tiara Open is in perfect condition. The mechanical maintenance has been kept up to date and this coupled with a super clean interior and exterior makes this vessel extremely desirable. If you are a serious express buyer, this one should be at the top of your list to see. The current owner purchased her about a year ago from an original owner. The previous owner only used the boat in the winter months and then during the summer months it was taken out of the water and stored in an air conditioned garage. During the time it was not cruising, it was always kept on a lift at the owner's house. The current owner is moving up to a larger motor yacht. Boat was manufactured in 2003.

## Salon

---

Interior scheme is "Sea Shimmer" w/ buff ultra leather and Chamois Corian U-shaped dinette with seating for 5-6 and storage below Dinette converts to a single upper/lower berth Dinette high gloss table Marine Air 12,000 BTU reverse cycle air/heat Solid Teak and Holly wood interior flooring AM/FM/CD with 6 disk changer, amp, subwoofer, 2 interior and 4 cockpit speakers Teak veneer interior Co2 detector Fire detector Sharp Aquos flat panel TV Panasonic DVD player

## Galley

---

Corian countertop Stainless steel under mount sinks Recessed 2 burner electric cook top Exhaust fan Built in coffee maker AC/DC refrigerator /freezer Upper dish lockers Three utensil drawers Under counter storage with Lazy Susan

## Master Stateroom

---

Double pedestal berth with custom mattress Huge under berth storage Hanging locker Port and starboard hullside storage cabinets Sharp Aquos 13" flat panel TV Marine Air 7,000 BTU reverse cycle air and heat Co2 detector Fire detector

## Head

---

Located amidships to port Vacuflush head system Corian countertop Mirrored vanity above sink Exhaust fan Storage locker Entrance from salon and master stateroom

## Helm

---

Helm seat forward w/wet bar, ice maker, and aft mezzanine seat Port curved companion seating with cooler, storage and aft facing seat Cool air helm Wood steering wheel Helm deck carpeting (3) Windshield wipers with washers 5" Ritchie compass Ship's horn Canvas seat covers for the exterior seating Blue dash gel oat Power seat Helm deck and cockpit speakers

---

## Electronics

---

Raymarine L1250 color chart plotter Raymarine RL80C color radar (rebuilt 2014) Raymarine 8001 Auto Pilot Raymarine ST60 multifunction unit Cummins engine displays Icom M502 VHF radio ACR remote spotlight control pad Sea-Key Clarion remote for exterior stereo system Glendinning engine sync Satellite TV

---

## Deck Equipment

---

Custom diamond pattern non-skid Molded in fiberglass bow pulpit with ss roller system Custom curved composite windshield with 1/4" tempered glass Electric center windshield vent Molded-in transom door and gate Swim platform with built in ladder Aft transom fold down cockpit bench seat Raw water wash down Fresh water wash down (4) Lee rod holders Flush floor boxes including macerator Hardtop with front and side enclosures and (2) Ocean Air sunshades built in Custom aft deck cover (2013)

---

## Electrical System

---

Onan 9kw Generator Tiara custom 12v and 120v electrical system with main distribution under cabin steps Electrical bonding system Battery charger (40 amp) Battery parallel switch CATV/phone hookup One 240v 50amp 65' shore power cord Glendinning cable recoiled

---

## Mechanical Equipment

---

Recessed trim tabs Oil changing system Waste macerator with Y-valve Fire suppression system in engine room Fresh water cooling on main engines Racor fuel filters Raw water intake strainers Bilge blowers Bilge pumps Water heater

---

## Exclusions

---

OWNER'S PERSONAL ITEMS OR ANY OTHER ITEMS NOT LISTED HEREIN AT TIME OF VIEWING.

---

## Exclusions

---

Owner's personal belongings.

## **Disclaimer**

---

The Company offers the details of this vessel or yacht in good faith but cannot guarantee or warrant the accuracy of this information nor warrant the condition of the vessel. A buyer should instruct his representatives, agents, or his surveyors, to investigate such details as the buyer desires validated. This vessel or yacht is offered subject to prior sale, price change, or withdrawal without notice.



# PHOTOS

**Dinette**



**Dinette**



**Galley**



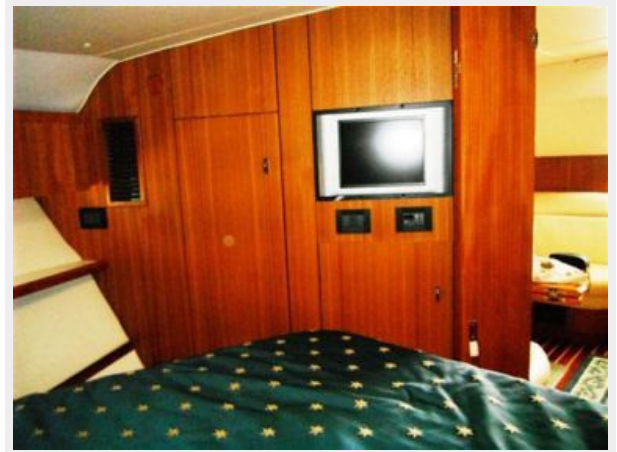
**Galley**



### Master Stateroom



### Master Stateroom



### Head Access



### Head



**Shower**



**Helm**



**Helm Seat**



**Removable Helm Deck Table**



**Mezzanine Seating**



**Upper Cockpit**



**Cockpit**



**Cockpit**



**Cockpit Icemaker**



**Livewell**



**Shorepower**



**Genset**



**Batteries**



**Engine Room**



**Engine Room**



**Engine Room**



**Engine Room**



**Transom**





---

# CONTACTS

---

Andrey Shestakov, leading yacht broker of the sales department of Shestakov Yacht Sales Inc. Shestakov Yacht Sales Inc., the official representative of the Miami/Fort Lauderdale FL headquarters.

---

## Contact details

---

Email: [andrey@shestakovyachtsales.com](mailto:andrey@shestakovyachtsales.com)

Web: [shestakovyachtsales.com/en/](http://shestakovyachtsales.com/en/)

---

## Telephones

---

USA: +1(954)274-4435

---

## Office hours

---

Monday – Saturday: **9:00 - 21:00** EDT

Sunday: **closed**

---

## Address

---



Harbour Towne Marina, 850 NE 3rd St,  
STE 213, Dania, FL 33004