

MR JACK — TAMSEN YACHTS



Builder: TAMSEN YACHTS

Year Built: 2011

Model: Motor Yacht

Price: PRICE ON APPLICATION

Location: France

LOA: 78' 5" (23.90m)

Beam: 17' 7" (5.36m)

Min Draft: 5' 3" (1.60m)

Max Draft: 5' 0" (1.52m)

Cruise Speed: 24 Kts. (28 MPH)

Max Speed: 30 Kts. (35 MPH)

Our experienced yacht broker, Andrey Shestakov, will help you choose and buy a yacht that best suits your needs **MR JACK — TAMSEN YACHTS** from our catalogue. Presently, at Shestakov Yacht Sales Inc., we have a wide variety of yachts available on our sale's list. We also work in close contact with all the big yacht manufacturers from all over the world.

If you would like to buy a yacht **MR JACK — TAMSEN YACHTS** or would like help answering any questions concerning purchasing, selling or chartering a yacht, please call **+1(954)274-4435**

TABLE OF CONTENTS

TABLE OF CONTENTS	2
SPECIFICATIONS	4
Basic Information	4
Dimensions	4
Speed, Capacities and Weight	4
Accommodations	4
Hull and Deck Information	5
Engine Information	5
DETAILED INFORMATION	6
Detailed Specifications - VAT Paid	6
Exclusions	22
Disclaimer	22
PHOTOS	23
Main Salon 1	23
Main Salon 2	23
Main Salon 3	23
Master Cabin 1	23
Master Cabin 2	23
Master Cabin 3	23
VIP Cabin	24
Flying Bridge Dining	24
Flybridge Sunbathing 1	24
Flybridge Sunbathing 2	24
Aft Cockpit Dining 2	24
Aft Cockpit Dining 3	24
Tender	25
Exterior 2	25
Flying bridge helm station	25

Engine Room	25
Electrical 1	25
Electrical 2	25
Electrical 3	26
Electrical 4	26
GA	26
CONTACTS	27
Contact details	27
Telephones	27
Office hours	27
Address	27

SPECIFICATIONS

Basic Information

Category: Motor Yacht

Model Year: 2011

Year Built: 2011

Country: France

Dimensions

LOA: 78' 5" (23.90m)

LWL: 71' 2" (21.69m)

Beam: 17' 7" (5.36m)

Min Draft: 5' 3" (1.60m)

Max Draft: 5' 0" (1.52m)

Speed, Capacities and Weight

Cruise Speed: 24 Kts. (28 MPH)

Max Speed: 30 Kts. (35 MPH)

Displacement: 99208.0179 Pounds

Water Capacity: 211.3376416 Gallons

Holding Tank: 39.097463696 Gallons

Fuel Capacity: 1135.9398236 Gallons

Accommodations

Total Cabins: 4

Sleeps: 8

Captain Cabin: True

Crew Cabin: 1

Crew Berths: 1

Crew Sleeps: 1

Crew Heads: 3

Hull and Deck Information

Hull Material: Composite

Deck Material: Teak

Exterior Designer: Tamsen

Interior Designer: Tamsen

Engine Information

Engines: 2

Manufacturer: MAN

Model: V12

Fuel Type: Diesel

DETAILED INFORMATION

Detailed Specifications - VAT Paid

MAIN CHARACTERISTICS

NAME	MR JACK
TYPE	Custom fly bridge motor yacht
BUILDER	TAMSEN Maritim GmbH Rostock, Germany
HULL NUMBER	#6
MODEL	Mazarin
YEAR	2011

LOA	23.90m (78' 0")
LWL	21.70m (71' 0")
BEAM	05.35m (17'6")
DRAFT	01.60m (5'4")
HULL MATERIAL	GRP/Composite
SUPER STRUCTURE	GRP/Composite
FLAG	German
PORT OF REGISTRY	Hamburg
CLASSIFICATION	GL CE – Yacht Plus Certificate
ENGINES	2x 1300 hp (900kw) MAN V12
SPEED (max)	about 30 knots
SPEED (cruising)	about 24 knots
FUEL CONSUMPTION	315 lt/h @ about

	24 knots
RANGE	about 380 nm
DISPLACEMENT (light ship)	37,650 kg
DISPLACEMENT (full load)	45,500 kg
ELECTRICITY ON BOARD	240 V AC 50hz by generator or shore power
	12V/24V DC
GUEST ACCOMMODATION	8 guests in 4 cabins
CREW ACCOMODATION	1 crew in 1 cabin
VAT	PAID

DESCRIPTION AND LAYOUT

MR JACK was commissioned by an experienced yachtsman and is the second yacht he built with this particular German yard, set up by two ex Lurssen engineers. Drawing on his own experience the owner aimed to build a yacht of the highest quality, with great attention to detail and a very high specification; and he achieved it. The quality throughout MR JACK is exceptional; from her GRP construction to mechanical and electrical details and interior fit and finish, there is simply no other yacht in this category that can compare, anywhere, at any price. Replacement cost is more than twice the asking price and MR JACK exudes German quality everywhere.

MR JACK boasts excellent quality and finish. Her efficient hull enables her to reach her cruising and top speeds with ease with very low levels of noise and vibration. Guest comfort on board is therefore far greater than on most yachts of her size.

She is extremely manoeuvrable and easy to operate, which allows for only one crew member. Cleverly combining sleek lines and comfortable interior and exterior deck spaces MR JACK can best be described as a “sport fly bridge yacht”. She carries large tenders for her size (a 4.70m jet tender and a jet ski) both of which are kept off deck and are very easy to launch and retrieve.

Stepping on board from the starboard passarelle, the teak dining table in the aft cockpit seats up to 10 guests around an L- shaped sofa with foldable deck chairs. Leading into to the bright and airy open plan main salon, the galley on

the starboard side is ideal for serving both external dining areas or being set up as a buffet. There are two comfortable sofas to port on different levels and a well-equipped helm station on the starboard side forward with direct access to the deck via a sliding door.

Moving to the lower deck the master stateroom is amidships and full beam with lots of natural light coming through 6 vertical windows. There is a large en-suite bathroom with shower on the port side and a good size walk in closet on the starboard side. Closet and storage space is ample throughout, further evidence of the owner's experience. The well-appointed VIP stateroom is forward with queen berth and adjoining head aft to starboard. There are two guest cabins port and starboard; the portside cabin has a double berth and the starboard side has two bunks. The two guest staterooms share a port side head with shower. Throughout the yacht the interior design is warm, simple and very tasteful, and of the highest Northern European quality.

On the fly bridge there are large sun pads forward and around the helm station with a wet bar and fridge immediately aft on the starboard side. Aft a u-shaped sofa and teak dining table are shaded by a Bimini top which sits easily in place in strong winds and under way at speed

There is a single crew cabin aft to starboard with en-suite head and opposite on the port side there is a garage for jet ski storage. The large 15'6" (4.70m) tender sits aft on the swim platform and both the tender and jet ski are easily launched.

CONSTRUCTION

Hull	GRP/ Composite
Superstructure	GRP/ Composite
Decks	Teak
Hull Paint	Brown Awlgrip
Superstructure Paint	White Awlgrip

CAPACITIES

Fuel Tank Capacity	about 4,300 lt (two aluminium tanks)
Fresh Water Tank Capacity	about 800 lt (one stainless steel tank)

Holding Tank Capacity about 150 lt

Boiler about 120 lt

MAIN MACHINERY

Main Engines 2x 1300 hp
(900kw) MAN
V12

Port Engine Hours 545 hours (as of
July 2014)

Stbd Engine Hours 545 hours (as of
July 2014)

Gear Box ZF IV Hydraulic

Main Generator 1x Kohler
20kW, 50hz

Generator Hours 3,257 hours (as
of July 2014)

ANCILLIARY MACHINERY AND EQUIPMENT

Air conditioning	Webasto (84,000 Btu)
Air compressor	Yes
Bow Thruster	Yes
Stern Thruster	Yes
Water maker	180 lt/h (Shenker)
Batteries	1 generator battery (Mastervolt)
	4 engine batteries (Mastervolt)
	6 service batteries (Mastervolt, New 2013)
Inverter	2.5 kW

Shore power

2 connections

DECK MACHINERY AND EQUIPMENT

Anchor winch

Lewmar

Anchor

50kg Delta

Anchor Chain

100m of 13mm
Stainless steel

Mooring winches

2 x Lewmar

Passarelle

Opacmare

Swim Platform

Hydraulic

Shower

On transom with
hot and cold
water

Under water lights

6 x 75 W

BRIDGE EQUIPMENT

Autopilot	Raymarine ST60+ Autohelm Series
Compass	Yes
Depth Sounder	Raymarine ST60+
GPS/ Chart Plotter	2x Raymarine E120 (12")
VHF	Raymarine Ray 240E
Radar	Openscanner 4kW 72nm

Main Engine emergency stops

2x Engine monitoring systems (6" display)

1x Security monitoring system (6" display)

Bow and Stern thruster controls

Search Light controls

Windlass controls

Rudder Angle Indicator (Raymarine ST 60)

FLY BRIDGE EQUIPMENT

Autopilot	Raymarine ST60+ Autohelm Series
Compass	Yes
Depth Sounder	Raymarine ST60+
GPS/ Chart Plotter	2x Raymarine E120 (12")
VHF	Raymarine Ray 240E
Radar	Yes

Main Engine emergency stops

2x Engine monitoring systems (6" display)

1x Security monitoring system (6" display)

Bow and Stern thruster controls

Search Light controls

Windlass controls

Rudder Angle Indicator (Raymarine ST 60)

SAFETY EQUIPMENT

Liferaft

Lifejackets

Fire extinguishers

Fire detection system

Fire suppression system

CCTV with one camera from the fly bridge looking aft and the other is inside the engine room.

ENTERTAINMENT SYSTEMS AND EQUIPMENT

Main Salon

Samsung 40'
flat screen TV

Sony Play
station

Apple TV

Bose home
entertainment

Sonos Sound
System with
integrated
iPhone and
iPad controls
and
loudspeakers
throughout the
boat

Master Cabin

Samsung 32'
flat screen TV

Apple TV

Bose home
entertainment

iPod/iPad
docking station

Denon CD/DVD
player

VIP Cabin

Samsung
32'flatscreen TV

Apple TV

Pioneer Radio
and CD/DVD
player

Guest Cabin (Port)

Samsung 26"
flat screen TV

Apple TV

Pioneer Radio
and CD/DVD
player

Guest Cabin (Stbd)

2x Samsung 19”
flat screen TV

Apple TV

Pioneer Radio
and CD/DVD
player

Crew Cabin

Samsung 15”
flat screen TV

Apple TV

Pioneer Radio
and CD/DVD
player

GALLEY AND LAUNDRY EQUIPMENT

Cooking Top	Miele
Dishwasher	Miele
Fridge/Freezers	Miele
	2 on the flying bridge
Icemaker	Vitfrigo in the cockpit aft

TENDERS AND TOYS

1x Pischell 4.70m (15'6") jet tender stored on swim platform

1x Jet ski Yamaha 1300 2 stroke

14. DISCLAIMER

All speeds, measurements, capacities, consumptions, etc. may be approximate or estimated. Specifications provided for information only. Data was obtained from sources believed to be reliable and is not guaranteed by owner or brokers. Buyer assumes the responsibility to ascertain the correctness of all data contained herein and otherwise provided and must instruct his agent and surveyors to confirm all details for accuracy prior to purchase. Subject to prior sale price and inventory change or withdrawal from market without notice.

Exclusions

Owner's personal belongings.

Disclaimer

The Company offers the details of this vessel or yacht in good faith but cannot guarantee or warrant the accuracy of this information nor warrant the condition of the vessel. A buyer should instruct his representatives, agents, or his surveyors, to investigate such details as the buyer desires validated. This vessel or yacht is offered subject to prior sale, price change, or withdrawal without notice.

PHOTOS

Main Salon 1



Main Salon 2



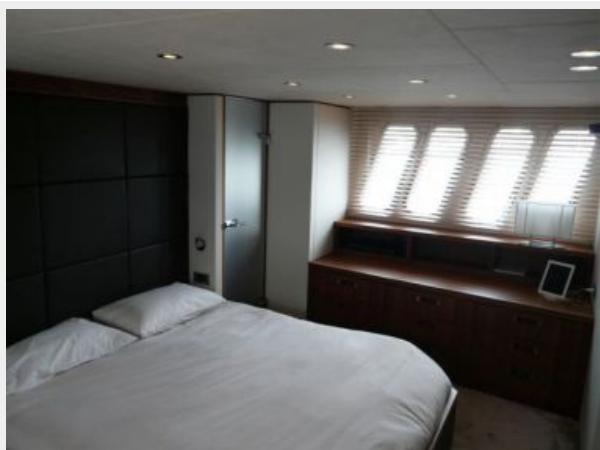
Main Salon 3



Master Cabin 1



Master Cabin 2



Master Cabin 3



VIP Cabin



Flying Bridge Dining



Flybridge Sunbathing 1



Flybridge Sunbathing 2



Aft Cockpit Dining 2



Aft Cockpit Dining 3



Exterior 2



Tender



Flying bridge helm station



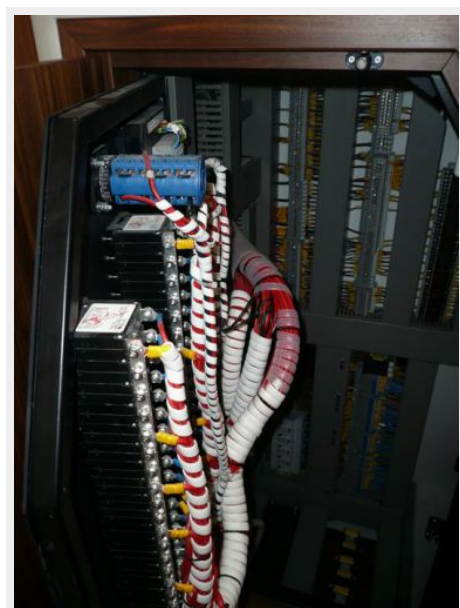
Engine Room



Electrical 1



Electrical 2



Electrical 3



Electrical 4



GA



CONTACTS

Andrey Shestakov, leading yacht broker of the sales department of Shestakov Yacht Sales Inc. Shestakov Yacht Sales Inc., the official representative of the Miami/Fort Lauderdale FL headquarters.

Contact details

Email: andrey@shestakovyachtsales.com

Web: shestakovyachtsales.com/en/

Telephones

USA: +1(954)274-4435

Office hours

Monday – Saturday: **9:00 - 21:00** EDT

Sunday: **closed**

Address



Harbour Towne Marina, 850 NE 3rd St,
STE 213, Dania, FL 33004