

MR JACK — TAMSEN YACHTS



Судостроитель: TAMSEN YACHTS

Год постройки: 2011

Модель: Моторная яхта

Цена: **ЦЕНА ЯХТЫ ПО ЗАПРОСУ**

Местонахождение: France

Длина общая: 78' 5" (23.90m)

Ширина: 17' 7" (5.36m)

Мин. осадка: 5' 3" (1.60m)

Макс. осадка: 5' 0" (1.52m)

Крейс. скорость: 24 Kts. (28 MPH)

Макс. скорость: 30 Kts. (35 MPH)

Купить **MR JACK — TAMSEN YACHTS** а также выбрать подходящую вам яхту из нашего каталога яхт вам поможет опытный яхтенный брокер Андрей Шестаков. На сегодняшний день компания **Shestakov Yacht Sales Inc.** имеет большое количество яхт в собственном списке продаж, а также тесно сотрудничает со всеми крупными яхтенными производителями по всему миру.

Для того чтобы купить яхту **MR JACK — TAMSEN YACHTS** а также проконсультироваться по любому вопросу связанному с покупкой, продажей, чартером яхт позвоните по телефону **+7(918)465-66-44**.

ОГЛАВЛЕНИЕ

ОГЛАВЛЕНИЕ	2
ХАРАКТЕРИСТИКИ	4
Основная информация	4
Размеры	4
Скорость, вместимость и масса	4
Размещение	4
Корпус и палуба	5
Информация о двигателе	5
ПОДРОБНОЕ ОПИСАНИЕ	6
Detailed Specifications - VAT Paid	6
Исключения	22
Отказ от ответственности	22
ФОТОГРАФИИ	23
Main Salon 1	23
Main Salon 2	23
Main Salon 3	23
Master Cabin 1	23
Master Cabin 2	23
Master Cabin 3	23
VIP Cabin	24
Flying Bridge Dining	24
Flybridge Sunbathing 1	24
Flybridge Sunbathing 2	24
Aft Cockpit Dining 2	24
Aft Cockpit Dining 3	24
Tender	25
Exterior 2	25
Flying bridge helm station	25

Engine Room	25
Electrical 1	25
Electrical 2	25
Electrical 3	26
Electrical 4	26
GA	26
КОНТАКТЫ	27
Контактная информация	27
Телефоны	27
Время работы	27
Адрес	27

ХАРАКТЕРИСТИКИ

Основная информация

Тип судна: Моторная яхта

Модельный год: 2011

Год постройки: 2011

Страна: France

Размеры

Длина общая: 78' 5" (23.90m)

Длина по ватерлинии: 71' 2" (21.69m)

Ширина: 17' 7" (5.36m)

Мин. осадка: 5' 3" (1.60m)

Макс. осадка: 5' 0" (1.52m)

Скорость, вместимость и масса

Крейс. скорость: 24 Kts. (28 MPH)

Макс. скорость: 30 Kts. (35 MPH)

Водоизмещение: 99208.0179 Pounds

Вместимость воды: 211.3376416 Gallons

Вместимость сточного бака:
39.097463696 Gallons

Объем топливного бака: 1135.9398236
Gallons

Размещение

Всего кают: 4

Спальные места: 8

Каюта капитана: Да

Каюты экипажа: 1

Койки экипажа: 1

Спальных мест экипажа: 1

Комм. состав экипажа: 3

Корпус и палуба

Материал корпуса: Composite

Материал палубы: Teak

Дизайнер экстерьера: Tamsen

Дизайнер интерьера: Tamsen

Информация о двигателе

Двигатели: 2

Производитель: MAN

Модель: V12

Тип топлива: Diesel

ПОДРОБНОЕ ОПИСАНИЕ

Detailed Specifications - VAT Paid

MAIN CHARACTERISTICS

NAME	MR JACK
TYPE	Custom fly bridge motor yacht
BUILDER	TAMSEN Maritim GmbH Rostock, Germany
HULL NUMBER	#6
MODEL	Mazarin
YEAR	2011

LOA	23.90m (78' 0")
LWL	21.70m (71' 0")
BEAM	05.35m (17'6")
DRAFT	01.60m (5'4")
HULL MATERIAL	GRP/Composite
SUPER STRUCTURE	GRP/Composite
FLAG	German
PORT OF REGISTRY	Hamburg
CLASSIFICATION	GL CE – Yacht Plus Certificate
ENGINES	2x 1300 hp (900kw) MAN V12
SPEED (max)	about 30 knots
SPEED (cruising)	about 24 knots
FUEL CONSUMPTION	315 lt/h @ about

	24 knots
RANGE	about 380 nm
DISPLACEMENT (light ship)	37,650 kg
DISPLACEMENT (full load)	45,500 kg
ELECTRICITY ON BOARD	240 V AC 50hz by generator or shore power
	12V/24V DC
GUEST ACCOMMODATION	8 guests in 4 cabins
CREW ACCOMODATION	1 crew in 1 cabin
VAT	PAID

DESCRIPTION AND LAYOUT

MR JACK was commissioned by an experienced yachtsman and is the second yacht he built with this particular German yard, set up by two ex Lurssen engineers. Drawing on his own experience the owner aimed to build a yacht of the highest quality, with great attention to detail and a very high specification; and he achieved it. The quality throughout MR JACK is exceptional; from her GRP construction to mechanical and electrical details and interior fit and finish, there is simply no other yacht in this category that can compare, anywhere, at any price. Replacement cost is more than twice the asking price and MR JACK exudes German quality everywhere.

MR JACK boasts excellent quality and finish. Her efficient hull enables her to reach her cruising and top speeds with ease with very low levels of noise and vibration. Guest comfort on board is therefore far greater than on most yachts of her size.

She is extremely manoeuvrable and easy to operate, which allows for only one crew member. Cleverly combining sleek lines and comfortable interior and exterior deck spaces MR JACK can best be described as a “sport fly bridge yacht”. She carries large tenders for her size (a 4.70m jet tender and a jet ski) both of which are kept off deck and are very easy to launch and retrieve.

Stepping on board from the starboard passarelle, the teak dining table in the aft cockpit seats up to 10 guests around an L- shaped sofa with foldable deck chairs. Leading into to the bright and airy open plan main salon, the galley on

the starboard side is ideal for serving both external dining areas or being set up as a buffet. There are two comfortable sofas to port on different levels and a well-equipped helm station on the starboard side forward with direct access to the deck via a sliding door.

Moving to the lower deck the master stateroom is amidships and full beam with lots of natural light coming through 6 vertical windows. There is a large en-suite bathroom with shower on the port side and a good size walk in closet on the starboard side. Closet and storage space is ample throughout, further evidence of the owner's experience. The well-appointed VIP stateroom is forward with queen berth and adjoining head aft to starboard. There are two guest cabins port and starboard; the portside cabin has a double berth and the starboard side has two bunks. The two guest staterooms share a port side head with shower. Throughout the yacht the interior design is warm, simple and very tasteful, and of the highest Northern European quality.

On the fly bridge there are large sun pads forward and around the helm station with a wet bar and fridge immediately aft on the starboard side. Aft a u-shaped sofa and teak dining table are shaded by a Bimini top which sits easily in place in strong winds and under way at speed

There is a single crew cabin aft to starboard with en-suite head and opposite on the port side there is a garage for jet ski storage. The large 15'6" (4.70m) tender sits aft on the swim platform and both the tender and jet ski are easily launched.

CONSTRUCTION

Hull	GRP/ Composite
Superstructure	GRP/ Composite
Decks	Teak
Hull Paint	Brown Awlgrip
Superstructure Paint	White Awlgrip

CAPACITIES

Fuel Tank Capacity	about 4,300 lt (two aluminium tanks)
Fresh Water Tank Capacity	about 800 lt (one stainless steel tank)

Holding Tank Capacity	about 150 lt
Boiler	about 120 lt

MAIN MACHINERY

Main Engines	2x 1300 hp (900kw) MAN V12
Port Engine Hours	545 hours (as of July 2014)
Stbd Engine Hours	545 hours (as of July 2014)
Gear Box	ZF IV Hydraulic
Main Generator	1x Kohler 20kW, 50hz
Generator Hours	3,257 hours (as of July 2014)

ANCILLIARY MACHINERY AND EQUIPMENT

Air conditioning	Webasto (84,000 Btu)
Air compressor	Yes
Bow Thruster	Yes
Stern Thruster	Yes
Water maker	180 lt/h (Shenker)
Batteries	1 generator battery (Mastervolt)
	4 engine batteries (Mastervolt)
	6 service batteries (Mastervolt, New 2013)
Inverter	2.5 kW

Shore power

2 connections

DECK MACHINERY AND EQUIPMENT

Anchor winch

Lewmar

Anchor

50kg Delta

Anchor Chain

100m of 13mm
Stainless steel

Mooring winches

2 x Lewmar

Passarelle

Opacmare

Swim Platform

Hydraulic

Shower

On transom with
hot and cold
water

Under water lights

6 x 75 W

BRIDGE EQUIPMENT

Autopilot	Raymarine ST60+ Autohelm Series
Compass	Yes
Depth Sounder	Raymarine ST60+
GPS/ Chart Plotter	2x Raymarine E120 (12")
VHF	Raymarine Ray 240E
Radar	Openscanner 4kW 72nm

Main Engine emergency stops

2x Engine monitoring systems (6" display)

1x Security monitoring system (6" display)

Bow and Stern thruster controls

Search Light controls

Windlass controls

Rudder Angle Indicator (Raymarine ST 60)

FLY BRIDGE EQUIPMENT

Autopilot	Raymarine ST60+ Autohelm Series
Compass	Yes
Depth Sounder	Raymarine ST60+
GPS/ Chart Plotter	2x Raymarine E120 (12")
VHF	Raymarine Ray 240E
Radar	Yes

Main Engine emergency stops

2x Engine monitoring systems (6" display)

1x Security monitoring system (6" display)

Bow and Stern thruster controls

Search Light controls

Windlass controls

Rudder Angle Indicator (Raymarine ST 60)

SAFETY EQUIPMENT

Liferaft

Lifejackets

Fire extinguishers

Fire detection system

Fire suppression system

CCTV with one camera from the fly bridge looking aft and the other is inside the engine room.

ENTERTAINMENT SYSTEMS AND EQUIPMENT

Main Salon

Samsung 40'
flat screen TV

Sony Play
station

Apple TV

Bose home
entertainment

Sonos Sound
System with
integrated
iPhone and
iPad controls
and
loudspeakers
throughout the
boat

Master Cabin

Samsung 32'
flat screen TV

Apple TV

Bose home
entertainment

iPod/iPad
docking station

Denon CD/DVD
player

VIP Cabin

Samsung
32'flatscreen TV

Apple TV

Pioneer Radio
and CD/DVD
player

Guest Cabin (Port)

Samsung 26"
flat screen TV

Apple TV

	Pioneer Radio and CD/DVD player
Guest Cabin (Stbd)	2x Samsung 19” flat screen TV Apple TV Pioneer Radio and CD/DVD player
Crew Cabin	Samsung 15” flat screen TV Apple TV Pioneer Radio and CD/DVD player

GALLEY AND LAUNDRY EQUIPMENT

Cooking Top

Miele

Dishwasher

Miele

Fridge/Freezers

Miele

2 on the flying
bridge

Icemaker

Vitfrigo in the
cockpit aft

TENDERS AND TOYS

1x Pischell 4.70m (15'6") jet tender stored on swim platform

1x Jet ski Yamaha 1300 2 stroke

14. DISCLAIMER

All speeds, measurements, capacities, consumptions, etc. may be approximate or estimated. Specifications provided for information only. Data was obtained from sources believed to be reliable and is not guaranteed by owner or brokers. Buyer assumes the responsibility to ascertain the correctness of all data contained herein and otherwise provided and must instruct his agent and surveyors to confirm all details for accuracy prior to purchase. Subject to prior sale price and inventory change or withdrawal from market without notice.

Исключения

При продаже яхты исключаются личные вещи владельца.

Отказ от ответственности

Компания предоставляет описание судна или яхты добросовестно, но не может гарантировать точность этой информации, а также не ручается за техническое состояние. Покупатель должен проинструктировать своих агентов или оценщиков исследовать представленную информацию более подробно, по собственному желанию. Продажа судна или яхты, изменение цены или снятие с продажи будет происходить без предварительного уведомления.

ФОТОГРАФИИ

Main Salon 1



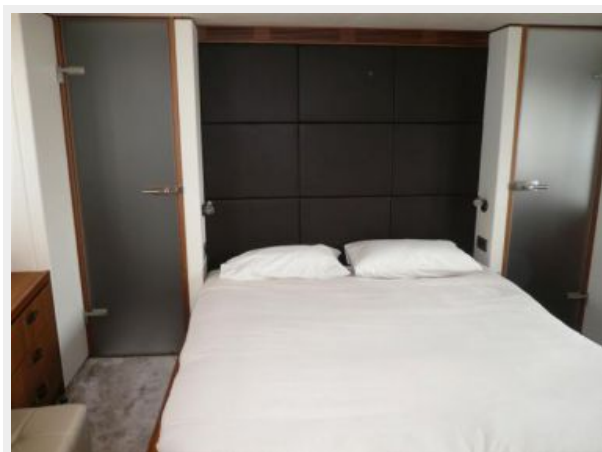
Main Salon 2



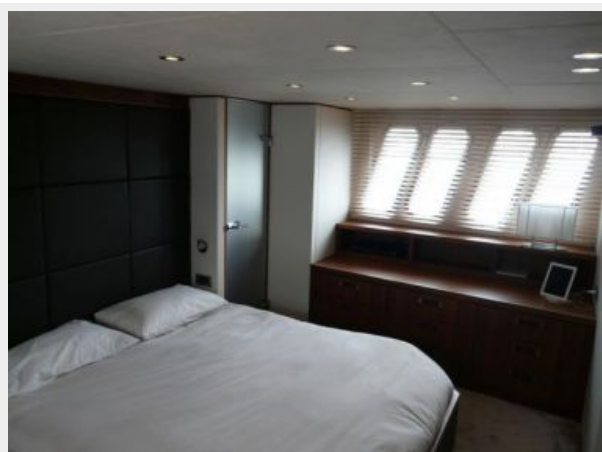
Main Salon 3



Master Cabin 1



Master Cabin 2



Master Cabin 3



VIP Cabin



Flying Bridge Dining



Flybridge Sunbathing 1



Flybridge Sunbathing 2



Aft Cockpit Dining 2



Aft Cockpit Dining 3



Exterior 2



Tender



Flying bridge helm station



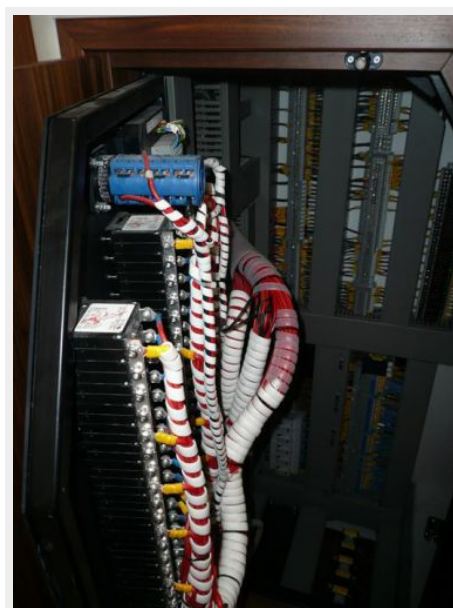
Engine Room



Electrical 1



Electrical 2



Electrical 3



Electrical 4



GA



КОНТАКТЫ

Андрей Шестаков (Andrey Shestakov) – ведущий яхтенный брокер отдела продаж яхт и судов компании Shestakov Yacht Sales Inc. Официальный представитель Shestakov Yacht Sales Inc. для русскоговорящих клиентов в центральном офисе компании в Майами/Форт Лодердейл/Флорида/США.

Контактная информация

Email: andrey@shestakovyachtsales.com

Web: shestakovyachtsales.com

Телефоны

Краснодарский край: **+7(918)465-66-44**

США, Майами, Флорида: **+1(954)274-4435**

Время работы

Понедельник – Суббота: **9:00 - 21:00**
EDT

Воскресенье: **Закрито**

Адрес



Harbour Towne Marina, 850 NE 3rd St,
STE 213, Dania, FL 33004