

LOST TEXAN — VIKING



Builder: VIKING

Year Built: 2001

Model: Sport Fisherman

Price: PRICE ON APPLICATION

Location: United States

LOA: 61' 0" (18.59m)

Beam: 18' 2" (5.54m)

Max Draft: 5' 4" (1.63m)

Cruise Speed: 33 Kts. (38 MPH)

Max Speed: 37 Kts. (43 MPH)

Our experienced yacht broker, Andrey Shestakov, will help you choose and buy a yacht that best suits your needs **LOST TEXAN — VIKING** from our catalogue. Presently, at Shestakov Yacht Sales Inc., we have a wide variety of yachts available on our sale's list. We also work in close contact with all the big yacht manufacturers from all over the world.

If you would like to buy a yacht **LOST TEXAN — VIKING** or would like help answering any questions concerning purchasing, selling or chartering a yacht, please call **+1(954)274-4435**

TABLE OF CONTENTS

TABLE OF CONTENTS	2
SPECIFICATIONS	4
Basic Information	4
Dimensions	4
Speed, Capacities and Weight	4
Accommodations	4
Hull and Deck Information	4
Engine Information	4
DETAILED INFORMATION	5
Vessel Walkthrough	5
Overview	5
Salon	5
Galley / Dinette	6
Master Stateroom	6
Master Head	7
VIP Stateroom 1	7
VIP Head	7
Starboard Guest Stateroom	8
Day Head	8
Fly Bridge	8
Electronics and Navigation	9
Electrical System	9
Cockpit	9
Engine Room	10
Hull & Deck Equipment	10
Exclusions	11
Disclaimer	11
PHOTOS	12

CONTACTS	28
Contact details	28
Telephones	28
Office hours	28
Address	28

SPECIFICATIONS

Basic Information

Category: Sport Fisherman

Model Year: 2001

Year Built: 2001

Country: United States

Dimensions

LOA: 61' 0" (18.59m)

Beam: 18' 2" (5.54m)

Max Draft: 5' 4" (1.63m)

Speed, Capacities and Weight

Cruise Speed: 33 Kts. (38 MPH)

Max Speed: 37 Kts. (43 MPH)

Displacement: 87000 Pounds

Accommodations

Total Cabins: 3

Total Heads: 3

Hull and Deck Information

Hull Material: Fiberglass

Engine Information

Engines: 2

Manufacturer: MTU

Model: V12 2000

Engine Type: Inboard

Fuel Type: Diesel

DETAILED INFORMATION

Vessel Walkthrough

Lost Texan is entered through the transom gate and door into the spacious cockpit. Moving forward and up two steps (one step having a large refrigerated drink box below), the salon sliding door gives entry to the yacht's interior. The salon is open and spacious with a U-shaped sofa to port, with coffee table. Moving forward to port is the gourmet galley with three undercounter Subzero refrigeration and three freezer drawers as well. To starboard is the dinette with custom Corian table with flush teak bullnose. Forward and down three stairs is the companionway giving access to the three staterooms and three heads. The washer and dryer are located at the bottom of the stairway to starboard. Starboard of the salon door is the ladderway to the bridge. Lost Texan has had her AV systems updated within the last three years including LCD flat screen televisions.

Overview

- Beam: 18'2"
- Min Draft: 5'4"
- Displacement: 87000
- Cruise Speed: 33
- Max Speed: 37
- Engines: Detroit Diesel/MTU
- Engine Model: V12-2000
- HP: 1480
- Hours: 1500

Salon

- Upgraded ultraleather sofa
- Main electrical panel
- Full canvas carpet runner
- Harmon Kardon upgrade stereo receiver
- Automatic salon door - air drive system replaced by Viking with modern electric/belt drive unit in 2013
- Teak hi-lo table
- Quartz lights with dimmer switch
- Amtico teak and holly at salon entrance, new 2012
- A/C Control
- Entertainment center with JVC with FM/stereo/VCR/DVD and Samsung LCD TV, new

2012

- Home theater audio visual upgrade
- Stereo speakers
- Central vacuum
- Valences and lambrequins wrapped in custom fabric, new 2011

Galley / Dinette

- Corian countertop with bone sink
- Trash compactor
- Amtico teak and holly sole, new 2012
- Corian surface dinette table with teak bullnose and pedestal
- Custom upgraded dinette settee
- Fresh water gauge
- Water pump indicator
- (3) Undercounter refrigerator/freezer units
- Icemaker in freezer
- Instant hot water dispenser
- Electric range
- Exhaust fan
- Garbage disposal
- Microwave/convection oven
- Sink
- Storage cabinets and large pullout overhead drawers
- Storage for dishes and glasses

Master Stateroom

- Corian countertop with bone sink
- Trash compactor
- Amtico teak and holly sole, new 2012
- Corian surface dinette table with teak bullnose and pedestal
- Custom upgraded dinette settee
- Fresh water gauge
- Water pump indicator
- (3) Undercounter refrigerator/freezer units
- Icemaker in freezer
- Instant hot water dispenser
- Electric range
- Exhaust fan
- Garbage disposal
- Microwave/convection oven

- Sink
- Storage cabinets and large pullout overhead drawers
- Storage for dishes and glasses

Master Head

- One-piece glass shower door
- Sealand Head system
- 110V outlet
- Head blower system
- Wallpaper around upper vanity
- Amtico teak and holly sole, new 2012
- Exhaust fan
- Linen storage
- Medicine cabinet
- Shower light
- Salon door type catch on door
- Custom wallpaper
- Mirrored ceiling

VIP Stateroom 1

- Custom VIP crossover arrangement
- LCD flat screen TV, new 2012
- Salon door type catch on door
- Overhead hatch
- Custom carpeting
- Cedar-lined hanging locker
- Stereo speakers
- Custom wallpaper
- Storage below berths
- Speakers
- Mirrored forward bulkhead

VIP Head

- Wallpaper around upper vanity insert
- Salon door type catch on door
- Custom wallpaper
- Amtico teak and holly sole, new 2012
- Exhaust fan

- Shower light
- Sealand Head system
- 110V outlet
- Head exhaust system
- Mirrored ceiling

Starboard Guest Stateroom

- Upper/Lower bunks
- Custom wallpaper
- Lower berth has lift up storage below
- Hanging locker with (2) drawers below
- Ensuite head

Day Head

- Wallpaper
- Sealand Head system
- Shower
- Amtico teak and holly sole, new 2012
- Custom wallpaper
- Mirrored ceiling

Fly Bridge

- Hardtop recessed teaser reels
- Custom helm pod with chrome wheel
- Electronic single lever controls for pod
- Electronic trolling valves
- EZ2CY in front center panel
- 3-Sided enclosure, new 2014
- Zippered vents at top of front (3) panels
- (6) Rod rocket launcher aft rail
- Teak helm/companion chair with stainless steel pedestals
- Remote spotlight
- Drop dry foam flybridge cushions, new 2012
- Large refrigerated cooler and freezer forward of helm
- (4) Fusion 3-way marine stereo speakers, 2013

Electronics and Navigation

- Garmin 7215 Plotter, 2012
- Garmin 740 secondary plotter, 2012
- Furuno FCV295 Depth sounder, 2012
- (2) ICOM ICM-504 VHF Radios, 2012
- ICOM ICM 802 VHF Radio with ICOM SP24 speaker, 2012
- Sony CDX-H910UI Marine stereo for flybridge, 2012
- (4) Fusion three-way marine speakers on flybridge, 2012
- Garmin GMI 10 digital multi display with depth/knot log, etc, 2012
- Furuno FI-50 Multi XL digital multi display with depth, water, temp etc, 2012
- Simrad Robertson AP22 autopilot
- Moritz factory alarm panel
- Furuno 7112 Radar 72 mile radar
- DDEC Control panel

Electrical System

- Battery charger
- Battery disconnect switches
- Engine room lights
- Battery paralleling
- Bonded electrical system with ground plate
- Navigation lights
- Voltage stabilizer transformer
- Batteries, heavy-duty with fiberglass boxes, all new 2013
- (2) Glendinning cablemasters
- Anchor light

Cockpit

- Teak deck
- Eskimo Ice machine
- Rupp triple spreader outriggers
- Outrigger hold-in-arms
- Center rigger
- (2) Rod holders in each tower leg
- Transom door and gate
- Cockpit freezer
- Drink cooler at salon step entrance

- Bait prep and tackle drawers
- Freshwater/saltwater washdown
- Speakers
- Dockside phone and cable connection
- Bluewater custom fighting chair with rocket launcher
- Transom livewell/fish box
- Transom swim steps with grab rails
- Fish box dividers
- (8) Rod holders in covering boards

Engine Room

- DDC MTU 1480 HP
- Engines with only 1500 original hours
- (2) Onan generators; starboard 3000 hours, Port 1100 hours
- 1200GPD Watermaker with auto backflush
- 110V Outlet on aft bulkhead
- Engineroom circulating fan
- Fire suppression system, auto/manual
- Dedicated forward pump room for AC compressors and water systems
- Fuel/water separator filters, engine and generator
- A/C Freshwater pressurized systems
- AC/Zones with reverse cycle heat
- Bilge pumps
- Engine room blowers
- Fuel priming pumps
- Eskimo Ice Machine
- Oil change system
- Water heater

Hull & Deck Equipment

- Oval exhaust outlets
- Lewmar windlass, no pulpit
- Anchor
- Teak deck
- Bow rail
- Pipewelders Towe
- (4) Transom underwater lights, 2012
- Tower controls
- Light green hull color

Exclusions

Owner's personal belongings.

Disclaimer

The Company offers the details of this vessel or yacht in good faith but cannot guarantee or warrant the accuracy of this information nor warrant the condition of the vessel. A buyer should instruct his representatives, agents, or his surveyors, to investigate such details as the buyer desires validated. This vessel or yacht is offered subject to prior sale, price change, or withdrawal without notice.

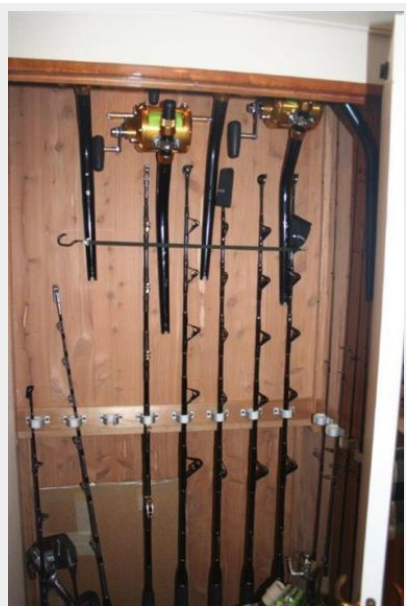
PHOTOS

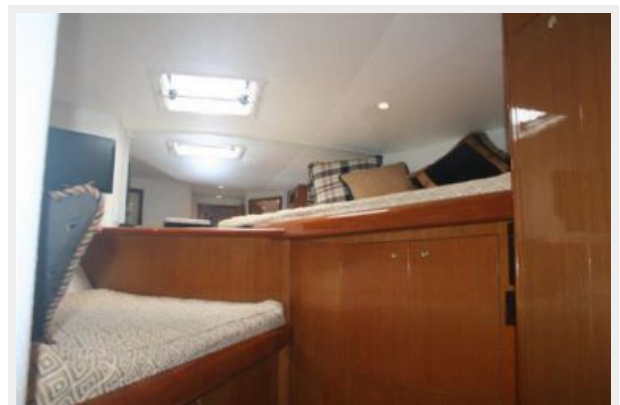
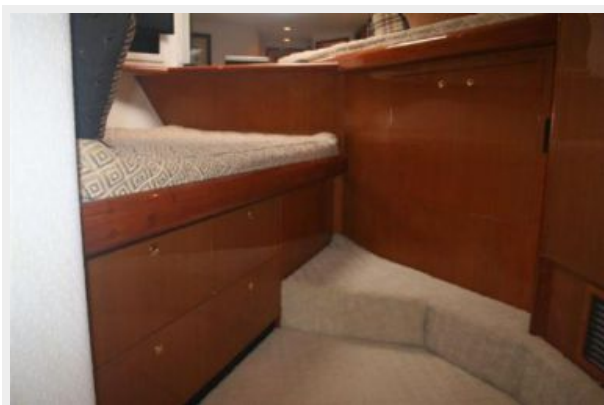


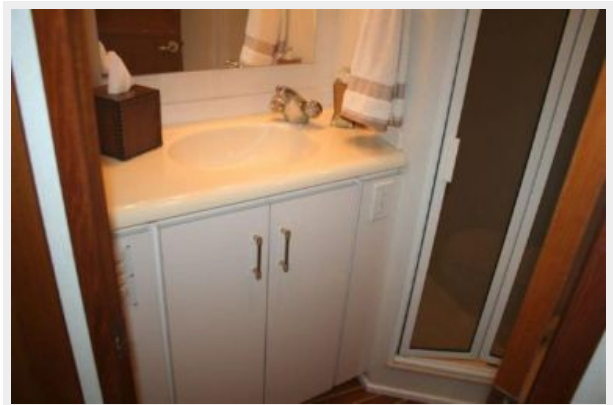


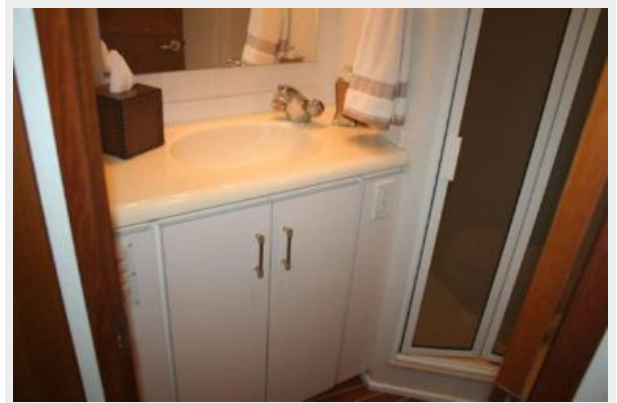
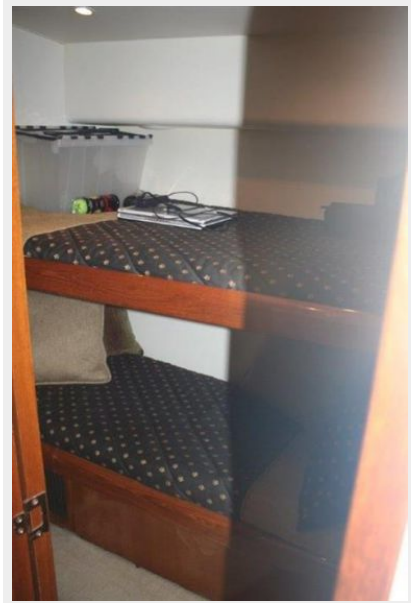




























CONTACTS

Andrey Shestakov, leading yacht broker of the sales department of Shestakov Yacht Sales Inc. Shestakov Yacht Sales Inc., the official representative of the Miami/Fort Lauderdale FL headquarters.

Contact details

Email: andrey@shestakovyachtsales.com

Web: shestakovyachtsales.com/en/

Telephones

USA: +1(954)274-4435

Office hours

Monday – Saturday: **9:00 - 21:00** EDT

Sunday: **closed**

Address



Harbour Towne Marina, 850 NE 3rd St,
STE 213, Dania, FL 33004