

## RAPSCALLION — HATTERAS



**Судостроитель:** HATTERAS

**Год постройки:** 1988

**Модель:** Моторная яхта

**Цена:** **ЦЕНА ЯХТЫ ПО ЗАПРОСУ**

**Местонахождение:** United States

**Длина общая:** 67' 0" (20.42m)

**Ширина:** 18' 2" (5.54m)

**Макс. осадка:** 5' 3" (1.60m)

**Крейс. скорость:** 19 Kts. (22 MPH)

**Макс. скорость:** 22 Kts. (25 MPH)

Купить **RAPSCALLION — HATTERAS** а также выбрать подходящую вам яхту из нашего каталога яхт вам поможет опытный яхтенный брокер Андрей Шестаков. На сегодняшний день компания **Shestakov Yacht Sales Inc.** имеет большое количество яхт в собственном списке продаж, а также тесно сотрудничает со всеми крупными яхтенными производителями по всему миру.

Для того чтобы купить яхту **RAPSCALLION — HATTERAS** а также проконсультироваться по любому вопросу связанному с покупкой, продажей, чартером яхт позвоните по телефону **+7(918)465-66-44**.

# ОГЛАВЛЕНИЕ

ОГЛАВЛЕНИЕ	2
ХАРАКТЕРИСТИКИ	4
Обзор	4
Основная информация	4
Размеры	4
Скорость, вместимость и масса	4
Размещение	4
Корпус и палуба	5
Информация о двигателе	5
ПОДРОБНОЕ ОПИСАНИЕ	6
Accommodations	6
Galley	6
Electronics	7
Deck & Hull	7
Electrical	8
Engines & Mechanical	8
Refit Updates	9
Исключения	12
Отказ от ответственности	13
ФОТОГРАФИИ	14
Salon	14
Salon	14
Galley	14
Galley	14
Master	14
Master Head	15
VIP Stateroom	15
VIP Stateroom	16

---

VIP Stateroom	16
Guest Stateroom	16
Guest Stateroom	16
Aft Deck Cabinet	16
Aft Deck	16
Flybridge Seating	17
Flybridge	17
Foredeck	17
Pilothouse	17
Foredeck	17
Port Walkway	17
Starboard Walkway	18
Cockpit	18
Cockpit View	18
Aft View	19
67' 1988 Hatteras Motoryacht	19
67' 1988 Hatteras Yacht Fisherman	19
<b>КОНТАКТЫ</b>	<b>20</b>
Контактная информация	20
Телефоны	20
Время работы	20
Адрес	20

# ХАРАКТЕРИСТИКИ

## Обзор

## Основная информация

Тип судна: Моторная яхта	Подкатегория: Кубрик
Модельный год: 1988	Год постройки: 1988
Страна: United States	Открытая палуба мостика: Да
Кубрик: Да	

## Размеры

Длина общая: 67' 0" (20.42m)	Ширина: 18' 2" (5.54m)
Макс. осадка: 5' 3" (1.60m)	Длина привального бруса: 67' 0" (20.42m)

## Скорость, вместимость и масса

Крейс. скорость: 19 Kts. (22 MPH)	Крейсерская скорость поворота: 2100 Kts.
Макс. скорость: 22 Kts. (25 MPH)	Макс. скорость поворота: 2300 Kts.
Водоизмещение: 90000 Pounds	Вместимость воды: 372 Gallons
Вместимость сточного бака: 210 Gallons	Объем топливного бака: 1171 Gallons

## Размещение

Всего кают: 3	Всего ком. состава: 3
---------------	-----------------------

## Корпус и палуба

---

**Материал корпуса:** Fiberglass

## Информация о двигателе

---

**Двигатели:** 2

**Производитель:** Detroit Diesel

**Модель:** 12V-71TA

**Тип двигателя:** Inboard

**Тип топлива:** Diesel

---

# ПОДРОБНОЕ ОПИСАНИЕ

---

## Accommodations

---

The interior accommodations feature three staterooms and a galley down. The salon is large and open with a lower control station and full 360 degree visibility. Exterior features include large flybridge, aft deck and cockpit areas, with walk-around side decks. The size and layout are ideal for anything from living aboard at the marina to extended cruising.

The bow guest stateroom, forward, features over/under berths to starboard and a private head with stall shower. Aft and up to the galley, to port. Aft and down from the galley, to starboard, is the laundry center and guest head/day head, with staff shower. To port is the larger second guest stateroom with twin berths featuring custom solid teak headboards..

Moving aft is the companionway, with access to the separate port and starboard walk-in-engine compartments. Followed by the full beam master stateroom. The master features a king with solid teak headboard, abundant storage drawers and lockers and private head with whirlpool tub.

From the Galley area, aft and up a curved companionway to the lower helm/main salon with custom wood blinds. The lower helm offers full instrumentation, access doors to both port and starboard side decks, ladder to the flybridge and a half-height teak cabinet that has two helm chairs mounted on top, storage lockers below and an entertainment center that opens to the salon area.

A ladder from the lower helm leads to the spacious flybridge with "Bluewater Marine" custom teak & stainless, pedestal type helm and companion seas, large, U-shaped seating area with table and access to the davit and tender.

## Galley

---

To starboard of the lower helm is a curved companionway leading down to the galley. The redesigned galley is now five coat snow white Awlgrip. Flooring is resilient simulated teak & holly. Custom floor hatch to generator room is hinged and pneumatic gas shock assessed.

- Custom solid teak louvered doors throughout

- Solid teak drawer fronts throughout
- Large food prep area with Subzero freezer & refrigerator
- Subzero ice maker
- Slide out trash with solid teak drawer front between
- Three soft close drawers with locking pulls
- Matching stainless steel Jenn Air equipment includes dishwasher, induction cooktop, microwave oven & oven
- Spice cabinet added over microwave
- Under lighting throughout galley with dimmers
- New flooring (2012)

## Electronics

---

Lower Helm:

- Furuno 72 mile color radar
- Simrad AP-25 auto pilot
- Furuno color depth recorder
- Icom IC-M302 VHF radio
- Raytheon Ray-410 Hailer
- Garmin 7215 Chartplotter with NMEA 2000 Fuel, Depth

Flybridge:

- Simrad auto pilot remote
- VHF radio
- Garmin 7212 Chartplotter with NMEA 2000 Fuel, Depth

## Deck & Hull

---

- Complete “Snow White” Awlgrip paint
- Flexing teak low maintenance faux teak decking system added to exterior walk around, flybridge, upper aft cockpit, lower aft cockpit & swim platform
- Hatteras bow pulpit s/SS anchor chute

- Galley Maid windlass fully serviced at Galley Maid. Upgraded to larger chain gypsy & 300' of 3/8" chain
- 75 pound stainless steel CR anchor
- Two fiberglass dunnage boxes at foredeck (not currently on board)
- Foredeck bench seat w/storage below
- Sun lounge on forward trunk cabin top
- Marquipt Tide Ride boarding stairs
- Shore service inlets port & starboard
- Transom boarding gate
- Swim platform w/flip up ladder
- Aft deck wet bar w/icemaker
- Hard Side Enclosures w/ sliding windows
- Radar arch and signal mast
- Flybridge Bimini top
- "Bluewater Marine" custom teak & stainless flybridge pedestal helm and companion seats
- Large U-shaped fiberglass seating area on FB
- Marquipt 1000# low profile box davit
- 2014 13' Oceanus AB Inflatable w/ four-stroke 25 hp Yamaha engine. Stainless automatic trim tabs. Garmin GPS/Sounder. Lifting harness. Custom cover. Custom chocks.

## Electrical

---

The generators, air conditioning compressors, air compressor, 12 volt DC components, isolation transformers and other components, isolation transformers and other components are located in a large compartment below the galley sole. The area is protected with a CO2 fire suppression system.

- Separate 12 and 24 volt DC systems
- 11/220 volt AC systems
- Two 20kw Onan generators w/sound shields & racors (1376 & 1932 hrs. 8/14)
- LaMarche 40 amp 24 volt charger, 220 VAC (New 6/14)
- Phase Three 12 volt charger
- Isolation transformers
- Shore power inlets, port and starboard
- Breaker panels w/magnetic circuit breakers

## Engines & Mechanical

---



The large, separate engine compartments are located to port and starboard of the companionway forward of the master stateroom. Both engine compartments have two access doors, fore and aft, with removable access panels between the doors.

- 12V-71TA Detroit diesels
- Air seps and dual Dahl fuel/water separators
- Racor fuel/water separators on both generators
- Oil change systems for engines and generators
- Electric fuel priming pumps
- CO2 fire suppression systems, engines and generators
- AC and DC lighting systems in engine compartments
- Cruiseair reverse cycle A/C w/SMX II digital panels, 5
- Naiad stabilizers fully rebuilt including – stabilizers dropped & seals replaced (8/14), all high pressure hoses replaced, larger stabilizer fans installed and both hydraulic rams fully rebuilt
- Galley Maid electric heads – removed serviced & replaced (2012)
- Galley Maid 600 gpd water maker – 51 hrs – all membranes replaced and fully serviced (2014)
- Nutone central vacuum system
- Hatteras systems monitor
- Speedaire air compressor (generator room)
- Glendinning engine synchronizer
- 110 volt fresh water pumps, 2
- All black water hoses replaced with lifetime guarantee hoses
- Bennett trim tabs

## Refit Updates

---

**Over \$450,000 in refits.**

### 2012

- Bottom peeled and epoxied with 12 coats
- All stanchions rebedded
- Galley remodeled and all new appliances added
- New flooring in galley
- All Galley Maid electric heads rebuilt by Galley Maid

- All black water and grey water hoses and fitting replaced
- Belly Maid windlass rebuilt
- Stabilizers serviced and hoses replaced
- Flexi teak decking installed on all deck surfaces
- KHV DTV receiver installed
- 3 new Samsung flat panel TV's
- New Sisal carpets throughout
- Low maintenance simulated teak & Holly flooring in all heads
- Custom nine zone Arid bilge system with upgraded valves
- Gen sets serviced – low hours
- A/C system updated and serviced
- All wall coverings redone
- New screens on all windows including port lights
- Five coats of snow white awlgrip in all heads (9/12)
- All weatherboards painted (6/12)
- New salon furniture
- New custom aft cabinet with U-Line icemaker & refrigerator. Pull out trash. Lots of storage & beautifully varnished solid teak countertop with teak fiddler board accent
- Solid teak deck furniture
- New Isinglass main aft deck enclosure. Never used just fitted, not a scratch.
- Custom easily storable lower deck sunshade with protective canvas case for poles
- Cockpit rod holders rebedded with stainless backing plates
- New port light gaskets throughout (7/12)
- Kitty internal fire suppression system fully inspected & updated (11/12)

## 2013

- 1000 hour engine serviced
- All new engine hoses and fittings
- Garmin GPS map 7212 installed on fly bridge
- Garmin GPS map 7215 installed on bridge with Chirp sounder
- All bilges areas stripped and painted white
- Bilge pump hoses replaced
- Tank tender system for monitoring precise levels of freshwater, fuel and blackwater
- Bilge/service hatched enlarged for ease of systems maintenance
- All exterior lifelines replaced including fittings
- New Bosch washer/dryer in companionway
- 130 pound class Pompanette fighting chair installed with custom oversized backing plate
- Three Rupp carbon fiber top gun outriggers
- Davit rebuilt
- Flexiteek decking of entire deck area
- Bimini top
- Custom Hunter Douglas pulldown shades in the master stateroom & VIP stateroom

## 2014

- All transmission lines replaced
- Rudders dropped, serviced and logs repacked
- Stabilizer fins upgrade and serviced
- Engines refreshed, new turbos, injectors, exhaust risers
- Bottom painted – hull peeled & recoated
- Prop speed on all running gear (8/14)
- Hull buffed
- Dive platform painted

- Two new high-capacity fresh water pumps
- All fresh water hoses replaced
- New battery charger system
- Shaft aligned
- Props aligned and tuned to S class rating (8/14)
- Through-hulls replaced on main engines (8/14)
- Six remaining through-hulls upgraded to Spartan taper valve units (8/14)
- Seastrainers upgraded to larger capacity Groco units for longer time span between cleaning
- All new fuse holders installed on shore power receptacles port & starboard (7/14)
- Two Marinco EEL shore power cords with built in inductors lights (8/14)
- Two new solid teak Release helm chairs with polished stainless steel pedestals & covers (9/13)
- All interior and exterior lighting converted to LED warm white
- Three underwater LED low voltage lights (8/14)
- Dusk/Dawn flag light
- Lazarette
- Teaser reels
- All exterior door mechanisms & tumblers replaced & all have matching keys
- Custom solid teak interior grab rails
- Fresh paint on engines & engine room floors (9/14)
- All windows recaulked and rebedded
- New teak flybridge helm chairs by Release Marine

## Исключения

При продаже яхты исключаются личные вещи владельца.

---

## Отказ от ответственности

---

Компания предоставляет описание судна или яхты добросовестно, но не может гарантировать точность этой информации, а также не ручается за техническое состояние. Покупатель должен проинструктировать своих агентов или оценщиков исследовать представленную информацию более подробно, по собственному желанию. Продажа судна или яхты, изменение цены или снятие с продажи будет происходить без предварительного уведомления.

# ФОТОГРАФИИ

Salon



Salon



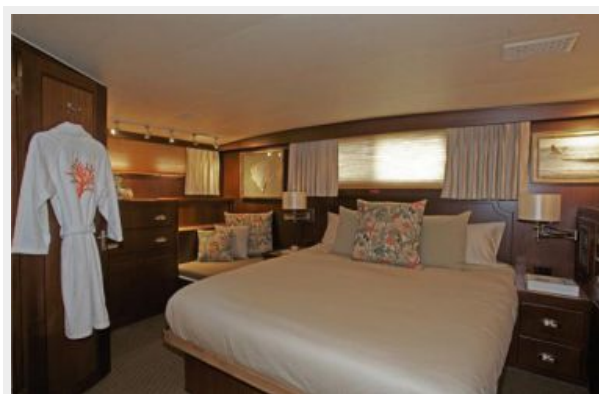
Galley

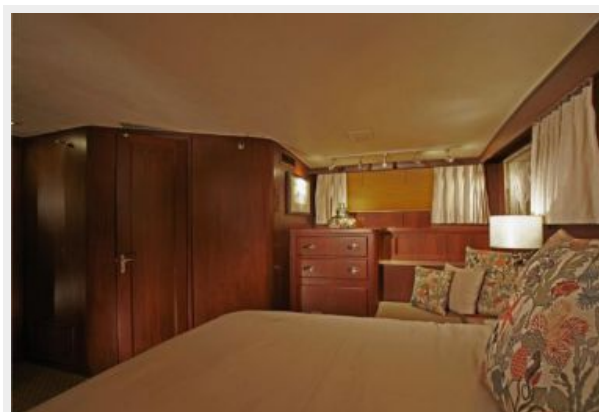
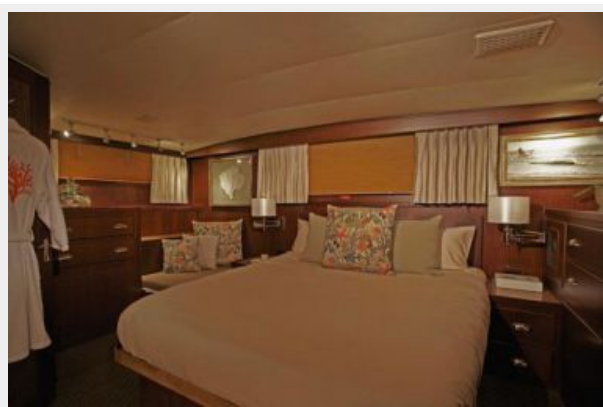


Galley



Master





**Master Head**



**VIP Stateroom**





**VIP Stateroom**



**VIP Stateroom**



**Guest Stateroom**



**Guest Stateroom**



**Aft Deck Cabinet**



**Aft Deck**





**Flybridge Seating**



**Flybridge**



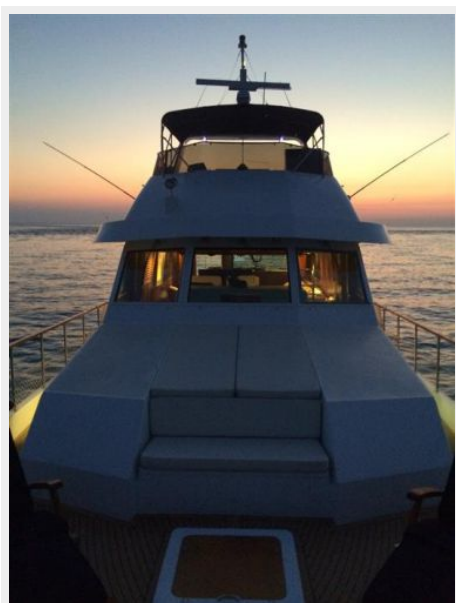
**Foredeck**



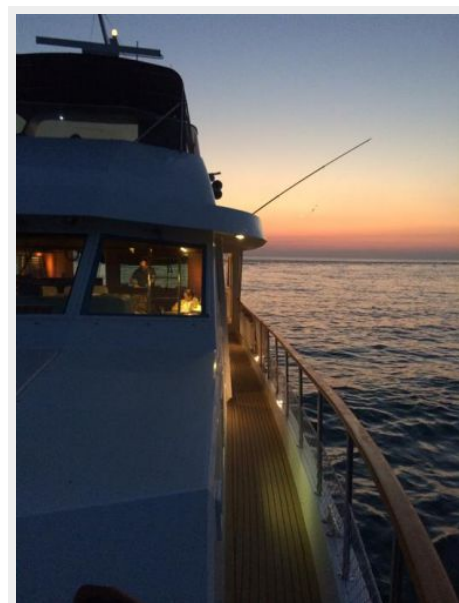
**Pilothouse**



**Foredeck**



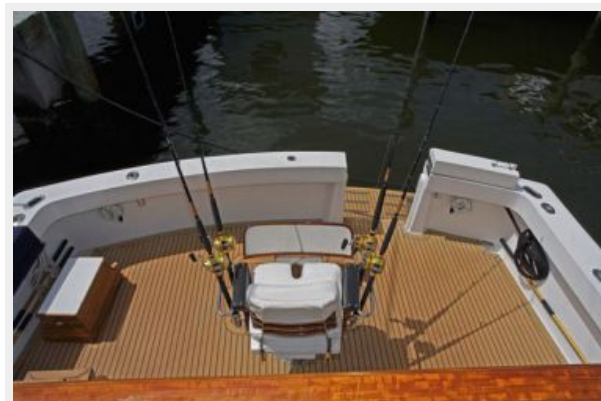
**Port Walkway**



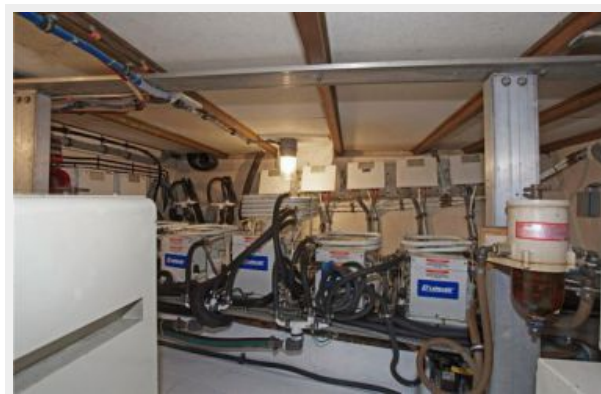
**Starboard Walkway**



**Cockpit**



**Cockpit View**







**Aft View**



**67' 1988 Hatteras Motoryacht**



**67' 1988 Hatteras Yacht Fisherman**



# КОНТАКТЫ

Андрей Шестаков (Andrey Shestakov) – ведущий яхтенный брокер отдела продаж яхт и судов компании Shestakov Yacht Sales Inc. Официальный представитель Shestakov Yacht Sales Inc. для русскоговорящих клиентов в центральном офисе компании в Майами/Форт Лодердейл/Флорида/США.

## Контактная информация

Email: [andrey@shestakovyachtsales.com](mailto:andrey@shestakovyachtsales.com)

Web: [shestakovyachtsales.com](http://shestakovyachtsales.com)

## Телефоны

Краснодарский край: **+7(918)465-66-44**

США, Майами, Флорида: **+1(954)274-4435**

## Время работы

Понедельник – Суббота: **9:00 - 21:00**  
EDT

Воскресенье: **Закрето**

## Адрес



Harbour Towne Marina, 850 NE 3rd St,  
STE 213, Dania, FL 33004