

EAGLE EYE — TOLLYCRAFT



Builder: TOLLYCRAFT

LOA: 61' 0" (18.59m)

Year Built: 1983

Model: Motor Yacht

Price: PRICE ON APPLICATION

Location: United States

Our experienced yacht broker, Andrey Shestakov, will help you choose and buy a yacht that best suits your needs **Eagle Eye — TOLLYCRAFT** from our catalogue. Presently, at Shestakov Yacht Sales Inc., we have a wide variety of yachts available on our sale's list. We also work in close contact with all the big yacht manufacturers from all over the world.

If you would like to buy a yacht **Eagle Eye — TOLLYCRAFT** or would like help answering any questions concerning purchasing, selling or chartering a yacht, please call **+1(954)274-4435**

TABLE OF CONTENTS

TABLE OF CONTENTS	2
SPECIFICATIONS	3
Overview	3
Basic Information	3
Dimensions	3
Accommodations	3
Hull and Deck Information	3
Engine Information	3
DETAILED INFORMATION	4
Accommodations	4
Galley	4
Electronics	5
Mechanical	5
Heads	5
Heating and AC	6
Exclusions	6
Disclaimer	6
PHOTOS	7
CONTACTS	9
Contact details	9
Telephones	9
Office hours	9
Address	9

SPECIFICATIONS

Overview

61' Tollycraft a North West Classic

Basic Information

Category: Motor Yacht

Model Year: 1983

Year Built: 1983

Country: United States

Dimensions

LOA: 61' 0" (18.59m)

Accommodations

Total Cabins: 3

Hull and Deck Information

Hull Material: Fiberglass

Engine Information

Manufacturer: Detroit Diesel

DETAILED INFORMATION

Accommodations

One of the nicest of the 61's the pilothouse layout includes a roomy salon open to the galley with 3 staterooms and 2 heads. The salon features a sofa, 2 chairs, wet bar and wine rack. Forward of the salon is a breakfast bar dividing the area from the galley. Steps lead up to the pilothouse and dinette. From the pilothouse, stairs to port lead down to the amidships full beam master stateroom with en suite head & vanity, granite counter tops, TV and plenty of storage. The guest stateroom is forward to starboard with twin bunks and a guest head and shower across the hallway to port. Forward in the bow is the VIP stateroom with queen walk around and lots of storage. All new custom designer interior including window treatment, furniture, and lighting. All windows and aluminum frames are new and better than factory.

Galley

- Glass 4 burner electric stove with lower oven
- Full size refer/freezer
- Microwave
- Trash compactor
- Granite Countertops (Custom)

- Garbage disposal
- Double sinks
- Teak flooring
- Breakfast bar
- Dishwasher
- Instant hot water dispenser
- Custom lighting

- Deck and Hull: All New Windows and Cabin Doors
- Two Adjustable swivel seats at helm. Bench seating aft.
- Bimini Top canvas
- Console on port side with sink
- Kenmore Freezer
- Maxwell 3500 Windlass
- Bruce 30KG Anchor
- 600' of Galvanized chain
- Swim Platform
- Galley Maid Windlass with remote in pilothouse and flybridge
- Transom Door
- Upgraded port and starboard pilothouse and flybridge
- Bow thruster with new gel cell batteries and battery charger

- Bennett Trim Tabs
- Updated Salon windows with custom wood privacy verticals
- 3/4 length keel
- Four blade 34X30" props
- Naiad Hydraulic Stabilizers
- Bronz Seacock Ball Valves S.S anchor roller
- Windshield wipers
- 13' Zodiac Rib Tender with 40 HP Honda Outboard. New steering controls.
- Starboard engine trolling valve

Electronics

- 4" Danforth Compass
- Icom M-80 VHF (2)
- Roberston AP200DL Autopilot with Nobeltec Interphase
- Interphase Twin Scope Sonar (Forward Scan)
- New Shuttle Computer 23" Monitor
- Nobeltec Navigation System with Radar
- KVH satellite TV system with two receivers and two splits
- Davis Weather station
- Standard C-75 Loud Hailer

Mechanical

- Twin Inboard Straight 6 Turbo Aftercooled
- Detroit Diesel 671 TI 3500 hours
- 2 1/4" S.S. Shafts
- Driplass Shaft seals
- Glendinning Engine Synchronizers
- Hynautic Steering
- Twin Disc MG 507 Transmissions - 2.54:1 reduction
- Two aluminum fuel tanks 580 Gallons each
- Aluminum Fresh water tank 400 gallons
- Torrid 30 Gallon hot water tank
- Newly updated fire extinguishers and engine room halon system 07-2012

Heads

- Upgraded Magnum Opus 3000 series Vacuflush toilets
- Copper sinks with granite countertops Enclosed stall showers with glass doors
- Custom shower tile

- Bamboo flooring (Custom)

Heating and AC

- Electric heaters throughout
- Hot water Hurricane diesel furnace
- Four Cruise Air reverse cycle air heat pumps
- Wired and plumbed water maker

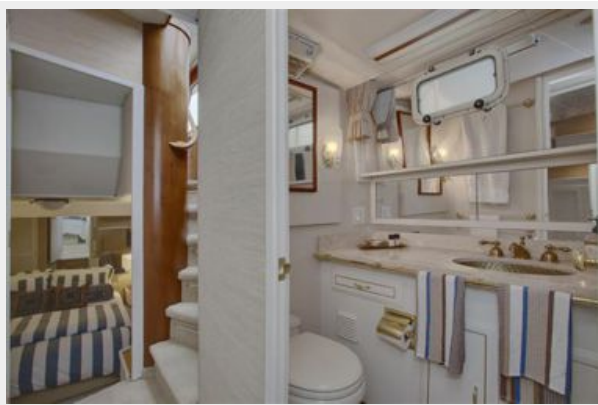
Exclusions

Owner's personal belongings.

Disclaimer

The Company offers the details of this vessel or yacht in good faith but cannot guarantee or warrant the accuracy of this information nor warrant the condition of the vessel. A buyer should instruct his representatives, agents, or his surveyors, to investigate such details as the buyer desires validated. This vessel or yacht is offered subject to prior sale, price change, or withdrawal without notice.

PHOTOS





CONTACTS

Andrey Shestakov, leading yacht broker of the sales department of Shestakov Yacht Sales Inc. Shestakov Yacht Sales Inc., the official representative of the Miami/Fort Lauderdale FL headquarters.

Contact details

Email: andrey@shestakovyachtsales.com

Web: shestakovyachtsales.com/en/

Telephones

USA: +1(954)274-4435

Office hours

Monday – Saturday: **9:00 - 21:00** EDT

Sunday: **closed**

Address



Harbour Towne Marina, 850 NE 3rd St,
STE 213, Dania, FL 33004