

TRUST ME II — DEFEVER



Builder: DEFEVER

Year Built: 2002

Model: Motor Yacht

Price: PRICE ON APPLICATION

Location: United States

LOA: 49' 0" (14.94m)

Beam: 15' 0" (4.57m)

Min Draft: 4' 9" (1.45m)

Max Draft: 4' 9" (1.45m)

Cruise Speed: 8 Kts. (9 MPH)

Max Speed: 10 Kts. (12 MPH)

Our experienced yacht broker, Andrey Shestakov, will help you choose and buy a yacht that best suits your needs **Trust Me II — DEFEVER** from our catalogue. Presently, at Shestakov Yacht Sales Inc., we have a wide variety of yachts available on our sale's list. We also work in close contact with all the big yacht manufacturers from all over the world.

If you would like to buy a yacht **Trust Me II — DEFEVER** or would like help answering any questions concerning purchasing, selling or chartering a yacht, please call **+1(954)274-4435**

TABLE OF CONTENTS

TABLE OF CONTENTS	2
SPECIFICATIONS	6
Overview	6
Basic Information	6
Dimensions	6
Speed, Capacities and Weight	6
Accommodations	6
Hull and Deck Information	7
Engine Information	7
DETAILED INFORMATION	8
49' DeFever Overview	8
49' DeFever Vessel Walkthrough	8
49' DeFever Accommodations	8
49' DeFever Salon	8
49' DeFever Galley	8
49' DeFever Dining	9
49' DeFever Lower Helm	9
49' DeFever Master Stateroom	9
49' DeFever Guest Stateroom	9
49' DeFever Laundry	9
49' DeFever Flybridge	9
49' DeFever Sundeck	10
49' DeFever Cockpit	10
49' DeFever Audio/Visual Equipment	10
49' DeFever Electronics	10
49' DeFever Electrical System	10
49' DeFever Engine/Mechanical Equipment	11
49' DeFever Deck Equipment	11

49' DeFever Tender	12
49' DeFever Safety & Fire Protection	12
49' DeFever Exclusions	12
49' DeFever Disclaimer	13
Exclusions	13
Disclaimer	13
PHOTOS	14
49' DeFever port aft profile photo1	14
49' DeFever port aft profile photo2	14
49' DeFever starboard aft profile photo1	14
49' DeFever starboard aft profile photo2	14
49' DeFever aft profile photo2	15
49' DeFever aft profile photo1	15
49' DeFever anchor windlass	15
49' DeFever foredeck	15
49' DeFever port side deck photo1	16
49' DeFever foredeck aft	16
49' DeFever port side deck photo2	16
49' DeFever starboard side deck photo1	16
49' DeFever starboard side deck photo2	17
49' DeFever flybridge forward	17
49' DeFever flybridge aft	17
49' DeFever flybridge port	17
49' DeFever flybridge starboard	17
49' DeFever flybridge helm	17
49' DeFever flybrodge port aft seating	18
49' DeFever flybridge starboard aft seating	18
49' DeFever tender davit	18
49' DeFever sundeck	18

49' DeFever sundeck forward	18
49' DeFever sundeck port	18
49' DeFever sundeck starboard	19
49' DeFever cockpit	19
49' DeFever cockpit port	19
49' DeFever cockpit starboard	19
49' DeFever swimplatform	19
49' DeFever salon forward	19
49' DeFever salon aft	20
49' DeFever salon port	20
49' DeFever galley photo1	20
49' DeFever salon starboard	20
49' DeFever galley photo2	21
49' DeFever galley photo3	21
49' DeFever lower helm photo1	21
49' DeFever lower helm photo2	21
49' DeFever lower helm overehad electronics	22
49' DeFever master stateroom	22
49' DeFever master stateroom port	22
49' DeFever master stateroom starboard	22
49' DeFever master stateroom head	23
49' DeFever master stateroom shower	23
49' DeFever guest stateroom photo1	23
49' DeFever guest stateroom photo2	23
49' DeFever guest stateroom head	24
49' DeFever washer-dryer	24
49' DeFever engine room forward	24
49' DeFever engine room aft	24
49' DeFever port main engine photo1	24

49' DeFever port main engine photo2	24
49' DeFever port Racor fuel filter	25
49' DeFever starboard main engine photo1	25
49' DeFever starboard Racor fuel filter	25
49' DeFever starboard main engine photo2	25
49' DeFever sea chest	26
49' DeFever fuel manifold	26
49' DeFever water heater	26
49' DeFever water maker	26
49' DeFever electrical panel	27
49' DeFever generator sound box	27
49' DeFever generator	27
CONTACTS	28
Contact details	28
Telephones	28
Office hours	28
Address	28

SPECIFICATIONS

Overview

Trust Me II is a classic and very popular 2002 49' DeFever cockpit motoryacht (Also known as a 44 + 5 model) in good condition. Trust Me II offers the usual 2 stateroom, 2 head, galley up, full beam master stateroom aft, huge sundeck and flybridge and a great cockpit layout. She also offers a bowthruster, 150 hp John Deere engines and low hour Westerbeke generator.

Basic Information

Category: Motor Yacht

Sub Category: Cockpit

Model Year: 2002

Year Built: 2002

Country: United States

Vessel Top: 2369

Fly Bridge: Yes

Cockpit: Yes

Dimensions

LOA: 49' 0" (14.94m)

Beam: 15' 0" (4.57m)

Min Draft: 4' 9" (1.45m)

Max Draft: 4' 9" (1.45m)

Speed, Capacities and Weight

Cruise Speed: 8 Kts. (9 MPH)

Max Speed: 10 Kts. (12 MPH)

Displacement: 53000 Pounds

Water Capacity: 370 Gallons

Holding Tank: 60 Gallons

Fuel Capacity: 950 Gallons

Accommodations

Total Cabins: 2

Total Berths: 4

Sleeps: 4

Total Heads: 2

Hull and Deck Information

Hull Material: Fiberglass

Deck Material: Composite Fiberglass

Hull Configuration: Full Displacement

Hull Finish: Stainless Steel

Engine Information

Engines: 2

Manufacturer: John Deere

Model: Power Tech 4045TFM50

Engine Type: Inboard

Fuel Type: Diesel

DETAILED INFORMATION

49' DeFever Overview

Trust Me II is a classic and very popular 2002 49' DeFever cockpit motoryacht (Also known as a 44 + 5 model) in good condition. Trust Me II offers the usual 2 stateroom, 2 head, galley up, full beam master stateroom aft, huge sundeck and flybridge and a great cockpit layout. She also offers a bowthruster, 150 hp John Deere engines and low hour Westerbeke generator.

49' DeFever Vessel Walkthrough

From the swimplatform, one would enter the cockpit through the starboard side transom door and then walk up several steps onto the sundeck. From the sundeck, you can walk along either side deck, step up several steps to the flybridge or enter the salon through the full height doorway. Once inside the salon, you will find the galley port aft, futon/sofa and hi/lo folding Cherrywood table to port and a port side deck access door aft. There is cabinetry to starboard and then the lower helm starboard forward. Then step down forward into the guest stateroom and the stand up engine room or walk aft and step down into the master stateroom.

49' DeFever Accommodations

The 49' DeFever cockpit motoryacht offers a full beam aft master stateroom with ensuite head and a forward guest stateroom with v-berth and insert and ensuite head. The sofa in the salon converts into another berth also.

49' DeFever Salon

The 49' DeFever offers a huge salon with a futon/sofa and a hi/lo, folding Cherrywood table to port, chart drawer and counter port forward, entertainment center and storage cabinetry to starboard, lower helm starboard forward, side deck access doors on each side, book shelves aft and galley port aft. There is also a teak parquet sole, blinds, curtains and two bar stools at the galley counter.

49' DeFever Galley

The galley is located port aft in the salon.

- Princess 3-burner gas cooktop and oven
- Norcold 12/24/120 volt refrigerator/freezer

- Double stainless steel sinks
- Corian countertop
- Storage drawers and cabinets

49' DeFever Dining

Dining space is available at the salon hi/lo folding Cherrywood table.

49' DeFever Lower Helm

Trust Me II offers a lower helm starboard forward in the salon with a full console and starboard side deck access door.

49' DeFever Master Stateroom

The full beam aft master stateroom offers a centerline queen size berth, nightstands, reading lights, 2 transom hatches and 6 portholes for loads of natural light and ventilation, curtains, hanging lockers, storage cabinets and drawers, ensuite head and teak parquet sole.

49' DeFever Guest Stateroom

The guest stateroom is located forward and offers a v-berth with insert, 4 portholes and overhead hatch for plenty of natural light and ventilation, hanging locker, storage cabinet, drawers and shelves, reading lights, curtains, teak parquet sole and ensuite head.

49' DeFever Laundry

- Whirlpool washer
- Whirlpool dryer

49' DeFever Flybridge

The huge flybridge offers a Radar arch, non-skid deck, helm forward with storage underneath, Todd helmseat, benchseats with storage underneath forward on each side and benchseats with storage underneath aft on each side.

49' DeFever Sundeck

The 49' DeFever sundeck is famous for its size and easy access. Trust Me II offers a non-skid deck, full overhead cover, wetbar forward, 2 teak deck chairs and a table, folding serving table, 2 rod holders, side deck access and bulwark gates on each side.

49' DeFever Cockpit

The large cockpit on the 49' DeFever offers teak cap rails, non-skid deck, transom door to the fiberglass swimplatform, fresh water shower in a transom compartment, lazarette access and steps to the sundeck.

49' DeFever Audio/Visual Equipment

- Toshiba TV in the salon
- Sanyo VWM-370 VCR in the salon
- Sony XR-CA630X AM/FM/CD/Sat ready player at the lower helm
- Sony speakers in the salon and on the flybridge

49' DeFever Electronics

- Simrad AP20 autopilot at the lower helm and AP21 remote autopilot on the flybridge
- Simrad RI35 rudder angle indicator at the lower helm
- Furuno Navnet Multi-Function Display at both helms
- Furuno Radar
- Ritchie magnetic compass at both helms
- Standard Horizon Spectrum + VHF at both helms
- Phone-Com intercom system

49' DeFever Electrical System

- Westerbeke 8.0BTDA 8 kW generator with 395 hours
- Newmar Phase Three PT-40CE battery charger

- 50 amp shore cord

49' DeFever Engine/Mechanical Equipment

- Twin John Deere Power Tech 4045TFM50 150hp main engines with 646 hours each
- ZF HSW 630 H1 2.5 gearboxes
- Morse engine controls
- PSS dripless shaft seals
- Centek exhaust system
- Fuel manifold
- Racor 900FG fuel filter with vacuum gauge for each main engine
- Racor 500FG fuel filter for the generator
- Oil change system
- Groco ARG 1250-S sea strainers for the main engines
- Groco ARG 1000-S sea strainer for the air conditioning system
- Sidepower bowthruster
- Marine Air Systems reverse cycle air conditioning/heating system
- Floject 4.5 gpm fresh water system pump
- Force-10 stainless steel 20 gallon water heater
- Offshore Marine Labs 800 gpd watermaker
- Vacuflush heads
- Tankwatch 4 holding tank level monitor system
- DeFever sea chest
- Work bench

49' DeFever Deck Equipment

- Maxwell 2200 anchor windlass with foot controls and remotes at each helm

-
- Simpson Lawrence Fast Set plow type anchor
 - Fortress FX-37 anchor
 - Stainless steel Sampson Post
 - Stainless steel deck hardware
 - Stainless steel rails forward and teak cap rails aft
 - Non-skid decks
 - Fresh water washdown fore and aft
 - Foredeck storage boxes
 - Manship deck hatch
 - Windscreen cover
 - Fiberglass swimplatform
 - Stainless steel swim ladder
 - Boarding gates on each side deck and on each side of the sundeck
 - Spreader lights

49' DeFever Tender

- UMT 1,000 lb davit
- Tender chocks

49' DeFever Safety & Fire Protection

- ACR searchlight
- Fire extinguishers
- Seaward galley propane solenoid control
- Rule bilge pumps

49' DeFever Exclusions

- Seller's personal belongings

49' DeFever Disclaimer

The Company offers the details of this vessel in good faith but cannot guarantee or warrant the accuracy of this information nor warrant the condition of the vessel. A buyer should instruct his agents, or his surveyors, to investigate such details as the buyer desires validated. This vessel is offered subject to prior sale, price change, or withdrawal without notice.

Exclusions

Owner's personal belongings.

Disclaimer

The Company offers the details of this vessel or yacht in good faith but cannot guarantee or warrant the accuracy of this information nor warrant the condition of the vessel. A buyer should instruct his representatives, agents, or his surveyors, to investigate such details as the buyer desires validated. This vessel or yacht is offered subject to prior sale, price change, or withdrawal without notice.

PHOTOS

49' DeFever port aft profile photo1



49' DeFever port aft profile photo2



49' DeFever starboard aft profile photo1



49' DeFever starboard aft profile photo2



49' DeFever aft profile photo2



49' DeFever aft profile photo1



49' DeFever anchor windlass



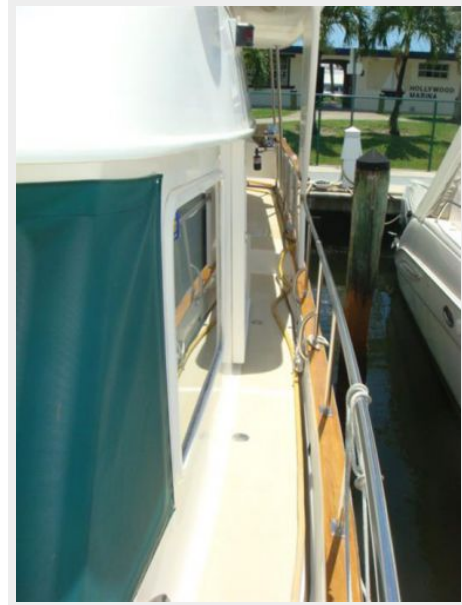
49' DeFever foredeck



49' DeFever foredeck aft



49' DeFever port side deck photo1



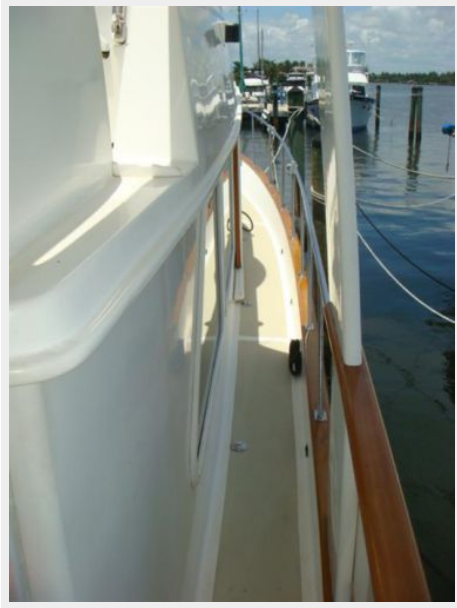
49' DeFever port side deck photo2



49' DeFever starboard side deck photo1



49' DeFever starboard side deck photo2



49' DeFever flybridge forward



49' DeFever flybridge aft



49' DeFever flybridge port



49' DeFever flybridge starboard



49' DeFever flybridge helm



49' DeFever flybridge port aft seating



49' DeFever flybridge starboard aft seating



49' DeFever tender davit



49' DeFever sundeck



49' DeFever sundeck forward



49' DeFever sundeck port



49' DeFever sundeck starboard



49' DeFever cockpit



49' DeFever cockpit port



49' DeFever cockpit starboard



49' DeFever swimplatform



49' DeFever salon forward



49' DeFever salon aft



49' DeFever salon port



49' DeFever galley photo1



49' DeFever salon starboard



49' DeFever galley photo2



49' DeFever galley photo3



49' DeFever lower helm photo1



49' DeFever lower helm photo2



49' DeFever lower helm overhead electronics



49' DeFever master stateroom



49' DeFever master stateroom port



49' DeFever master stateroom starboard



49' DeFever master stateroom head



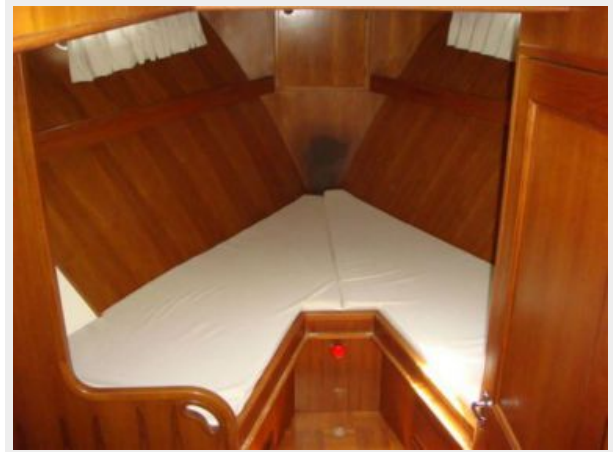
49' DeFever master stateroom shower



49' DeFever guest stateroom photo1



49' DeFever guest stateroom photo2



49' DeFever guest stateroom head



49' DeFever washer-dryer



49' DeFever engine room forward



49' DeFever engine room aft



49' DeFever port main engine photo1



49' DeFever port main engine photo2



49' DeFever port Racor fuel filter



49' DeFever starboard main engine photo1



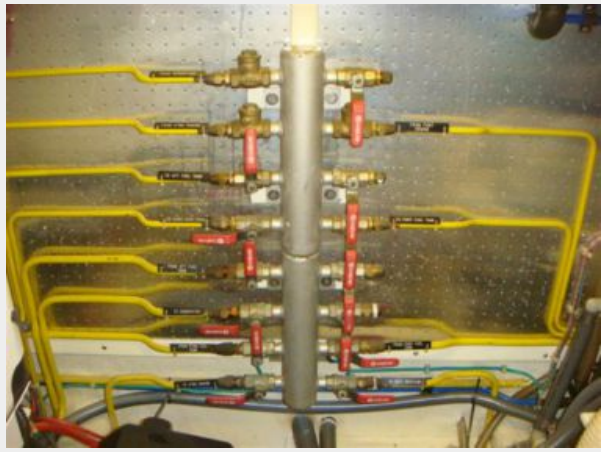
49' DeFever starboard Racor fuel filter



49' DeFever starboard main engine photo2



49' DeFever fuel manifold



49' DeFever sea chest



49' DeFever water heater



49' DeFever water maker



49' DeFever electrical panel



49' DeFever generator sound box



49' DeFever generator



CONTACTS

Andrey Shestakov, leading yacht broker of the sales department of Shestakov Yacht Sales Inc. Shestakov Yacht Sales Inc., the official representative of the Miami/Fort Lauderdale FL headquarters.

Contact details

Email: andrey@shestakovyachtsales.com

Web: shestakovyachtsales.com/en/

Telephones

USA: +1(954)274-4435

Office hours

Monday – Saturday: **9:00 - 21:00** EDT

Sunday: **closed**

Address



Harbour Towne Marina, 850 NE 3rd St,
STE 213, Dania, FL 33004