

R&R — JEFFERSON



Судостроитель: JEFFERSON

Год постройки: 1987

Модель: Траулер

Цена: ЦЕНА ЯХТЫ ПО ЗАПРОСУ

Местонахождение: United States

Длина общая: 42' 0" (12.80m)

Ширина: 14' 3" (4.34m)

Мин. осадка: 37' 0" (11.28m)

Макс. осадка: 3' 7" (1.09m)

Крейс. скорость: 13 Kts. (15 MPH)

Макс. скорость: 17 Kts. (20 MPH)

Купить **R&R — JEFFERSON** а также выбрать подходящую вам яхту из нашего каталога яхт вам поможет опытный яхтенный брокер Андрей Шестаков. На сегодняшний день компания **Shestakov Yacht Sales Inc.** имеет большое количество яхт в собственном списке продаж, а также тесно сотрудничает со всеми крупными яхтенными производителями по всему миру.

Для того чтобы купить яхту **R&R — JEFFERSON** а также проконсультироваться по любому вопросу связанному с покупкой, продажей, чартером яхт позвоните по телефону **+7(918)465-66-44**.

ОГЛАВЛЕНИЕ

ОГЛАВЛЕНИЕ	2
ХАРАКТЕРИСТИКИ	5
Обзор	5
Основная информация	5
Размеры	5
Скорость, вместимость и масса	5
Размещение	5
Корпус и палуба	6
Информация о двигателе	6
ПОДРОБНОЕ ОПИСАНИЕ	7
42' Jefferson Overview	7
42' Jefferson Vessel Walkthrough	7
42' Jefferson Accommodations	7
42' Jefferson Salon	7
42' Jefferson Galley	7
42' Jefferson Dining	8
42' Jefferson Master Stateroom	8
42' Jefferson Guest Stateroom	8
42' Jefferson Flybridge	8
42' Jefferson Sundeck	8
42' Jefferson Audio/Visual Equipment	8
42' Jefferson Electronics	9
42' Jefferson Electrical System	9
42' Jefferson Engine/Mechanical Equipment	9
42' Jefferson Deck Equipment	10
42' Jefferson Tender	10
42' Jefferson Safety & Fire Protection	10
42' Jefferson Exclusions	11

42' Jefferson Disclaimer	11
Исключения	11
Отказ от ответственности	11
ФОТОГРАФИИ	12
42' Jefferson port aft profile	12
42' Jefferson starboard aft profile	12
42' Jefferson anchor windlass	12
42' Jefferson foredeck	12
42' Jefferson port side deck photo1	13
42' Jefferson starboard side deck photo2	13
42' Jefferson starboard side deck photo1	13
42' Jefferson flybridge forward	13
42' Jefferson flybridge aft	14
42' Jefferson flybridge port	14
42' Jefferson tender photo1	14
42' Jefferson tender photo2	14
42' Jefferson tender davit	14
42' Jefferson flybridge starboard	14
42' Jefferson sundeck	15
42' Jefferson sundeck port	15
42' Jefferson sundeck starboard	15
42' Jefferson sundeck forward	15
42' Jefferson swimplatform	15
42' Jefferson salon forward	15
42' Jefferson salon aft	16
42' Jefferson salon port	16
42' Jefferson salon starboard	16
42' Jefferson salon starboard seating	16
42' Jefferson dinette	16

42' Jefferson galley photo1	16
42' Jefferson galley photo2	17
42' Jefferson lower helm photo1	17
42' Jefferson lower helm photo2	17
42' Jefferson master stateroom	17
42' Jefferson master stateroom port	17
42' Jefferson master stateroom forward	17
42' Jefferson master stateroom head	18
42' Jefferson master stateroom starboard	18
42' Jefferson master stateroom tub-shower	18
42' Jefferson guest stateroom	18
42' Jefferson guest stateroom head	19
42' Jefferson engine room access	19
42' Jefferson engine room aft	19
42' Jefferson port main engine	19
42' Jefferson starboard main engine	19
42' Jefferson fuel manifold	19
42' Jefferson water heater	20
42' Jefferson fuel polishing system	20
42' Jefferson electrical panel	20
42' Jefferson generator	20
КОНТАКТЫ	21
Контактная информация	21
Телефоны	21
Время работы	21
Адрес	21

ХАРАКТЕРИСТИКИ

Обзор

R&R is a well-maintained 42' Jefferson offering a 2 stateroom, 2 head layout, with the full beam master stateroom aft, fuel efficient Cummins 210 hp main engines, Eisenglass enclosed sundeck and flybridge and a Achilles RIB tender and outboard. Great Loop veteran. Attractively priced by a serious seller. Price reduced!

Основная информация

Тип судна: Траулер

Подкатегория: Aft Cabin

Модельный год: 1987

Год постройки: 1987

Страна: United States

Верх: 2369

Открытая палуба мостика: Да

Размеры

Длина общая: 42' 0" (12.80m)

Ширина: 14' 3" (4.34m)

Мин. осадка: 37' 0" (11.28m)

Макс. осадка: 3' 7" (1.09m)

Скорость, вместимость и масса

Крейс. скорость: 13 Kts. (15 MPH)

Макс. скорость: 17 Kts. (20 MPH)

Вместимость воды: 200 Gallons

Вместимость сточного бака: 50 Gallons

Объем топливного бака: 350 Gallons

Размещение

Всего кают: 2

Всего коек: 4

Спальные места: 6

Всего ком. состава: 2

Корпус и палуба

Материал корпуса: Fiberglass

Цвет корпуса: White

Информация о двигателе

Двигатели: 2

Производитель: Cummins

Модель: 6BTA5.9-M

Тип двигателя: Inboard

Тип топлива: Diesel

ПОДРОБНОЕ ОПИСАНИЕ

42' Jefferson Overview

R&R is a well-maintained 42' Jefferson offering a 2 stateroom, 2 head layout, with the full beam master stateroom aft, fuel efficient Cummins 210 hp main engines, Eisenglass enclosed sundeck and flybridge and a Achilles RIB tender and outboard. Great Loop veteran. Attractively priced by a serious seller. Price reduced!

42' Jefferson Vessel Walkthrough

From the sundeck, you can step up into the flybridge, walk onto each side deck or step down into the salon. Once in the salon, you will find a settee with hi/lo teak table to starboard, lower helm and side deck access door starboard forward, liquor cabinet port aft, lounge chair to port and entertainment/storage cabinetry port forward. Walk forward and step down into the galley to starboard and dinette to port. The guest stateroom and head are forward and the full beam master stateroom is aft. the engine room is accessed via a door under the galley steps or salon sole hatches.

42' Jefferson Accommodations

The full beam master stateroom with centerline queen size berth and ensuite head is aft and the guest stateroom with v-berth and ensuite head is forward.

42' Jefferson Salon

The salon offers a settee with hi/lo teak table to starboard, side deck access door starboard forward, liquor cabinet port aft, lounge chair to port, entertainment/storage cabinetry port forward, teak parquet sole, curtains and opening side windows with screens.

42' Jefferson Galley

The galley is down and to starboard.

- Princess 3-burner electric cooktop and oven
- Norcold 12/24 volt refrigerator/freezer
- Magic Chef microwave oven
- Double stainless steel sinks

- Storage cabinets and drawers
- Frigidaire refrigerator/freezer on the sundeck
- West Marine stainless steel BBQ grill on the sundeck

42' Jefferson Dining

Dining space is available at the salon settee and at the dinette across from the galley.

42' Jefferson Master Stateroom

The full beam master stateroom is aft and offers a centerline queen size berth, nightstands, reading lights, 3 transom hatches, side windows, built-in seating in each aft corner, storage cabinets and drawers, hanging lockers, curtains, vanity/desk, teak parquet sole and ensuite head with tub/shower.

42' Jefferson Guest Stateroom

The guest stateroom is forward and offers a v-berth with insert, reading lights, shelves, hanging locker, 4 portlights, overhead hatch, teak parquet sole and an ensuite head.

42' Jefferson Flybridge

The flybridge offers a bimini, hinged arch, Eisenglass enclosure, Man-O-War helm seat, exterior carpet over non-skid deck, folding table aft, benchseats and storage each side and a full helm forward.

42' Jefferson Sundeck

The sundeck offers a hardtop, Eisenglass enclosure, transom door with a stainless steel and teak ladder to the fiberglass swimplatform, side deck access, double teak & glass doors to the salon, wetbar, exterior carpet over non-skid deck, bench/storage seat, 2 lounge chairs, Frigidaire refrigerator/freezer and a stainless steel West Marine BBQ grill.

42' Jefferson Audio/Visual Equipment

- Insignia flat screen TV in the salon
- Magnavox DVD player in the salon

- Hometech speakers in the salon
- Sony speakers on the exterior

42' Jefferson Electronics

- Raytheon Pathfinder R80 Radar on the flybridge
- Standard Horizon GX 2360S VHF on the flybridge
- Sitex depth sounder on the flybridge
- Datamarine 3030 depth sounder remote on the flybridge
- Ritchie Powerdamp magnetic compass at both helms

42' Jefferson Electrical System

- Westerbeke 8KW generator with 2410 hours
- Freedom 2500 watt inverter with control panel (2010)
- Galvanic isolator (2010)
- 50 amp shore cord

42' Jefferson Engine/Mechanical Equipment

- Twin Cummins 6BTA5.9-M 210 hp main engines
- Twin disc gearboxes
- Morse engine controls
- VDO gauges
- Racor 500FG fuel filters for the main engines
- Racor 500FG fuel polishing system
- Racor R12S fuel filter for the generator
- Fuel manifold
- Fuelsep system

- Bennett trim tabs
- Cruisair reverse cycle air conditioning/heating system
- Espar diesel fired heating system
- Raritan 12 gallon water heater
- Electric heads

42' Jefferson Deck Equipment

- Anchor windlass with foot controls
- Delta 45lb anchor (2010)
- 275' 3/8" anchor chain
- Bow pulpit
- Stainless steel rails
- Stainless steel deck hardware
- Stainless steel fender racks
- Non-skid decks
- Windscreen cover
- Hot/cold fresh water shower on the swimplatform
- Stainless steel swim ladder
- Fiberglass swimplatform

42' Jefferson Tender

- Achilles 10'2" RIB
- Tohatsu 9.8hp, 4-stroke outboard
- Nautical Structures 600lb davit

42' Jefferson Safety & Fire Protection

- Sea Fire 1301 Halon engine room fire suppression system
- Fire extinguishers
- Guest searchlight

42' Jefferson Exclusions

Seller's personal belongings

42' Jefferson Disclaimer

The Company offers the details of this vessel in good faith but cannot guarantee or warrant the accuracy of this information nor warrant the condition of the vessel. A buyer should instruct his agents, or his surveyors, to investigate such details as the buyer desires validated. This vessel is offered subject to prior sale, price change, or withdrawal without notice.

Исключения

При продаже яхты исключаются личные вещи владельца.

Отказ от ответственности

Компания предоставляет описание судна или яхты добросовестно, но не может гарантировать точность этой информации, а также не ручается за техническое состояние. Покупатель должен проинструктировать своих агентов или оценщиков исследовать представленную информацию более подробно, по собственному желанию. Продажа судна или яхты, изменение цены или снятие с продажи будет происходить без предварительного уведомления.

ФОТОГРАФИИ

42' Jefferson port aft profile



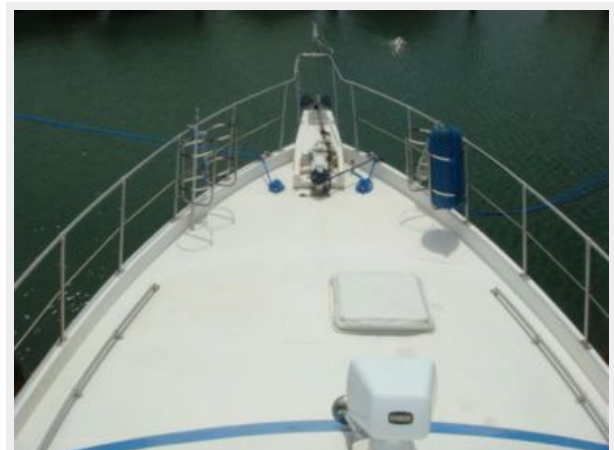
42' Jefferson starboard aft profile



42' Jefferson anchor windlass



42' Jefferson foredeck



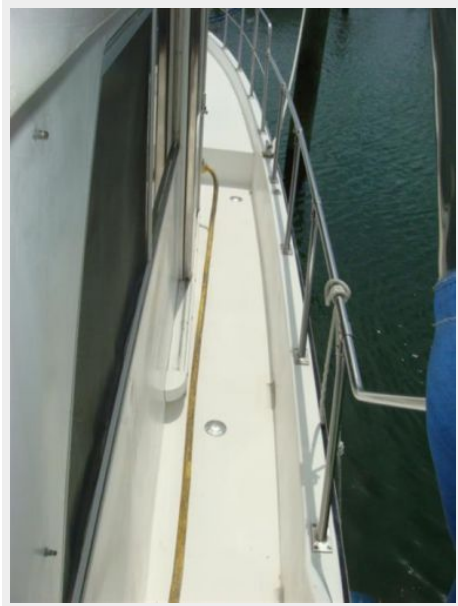
42' Jefferson port side deck photo1



42' Jefferson starboard side deck photo2



42' Jefferson starboard side deck photo1



42' Jefferson flybridge forward



42' Jefferson flybridge aft



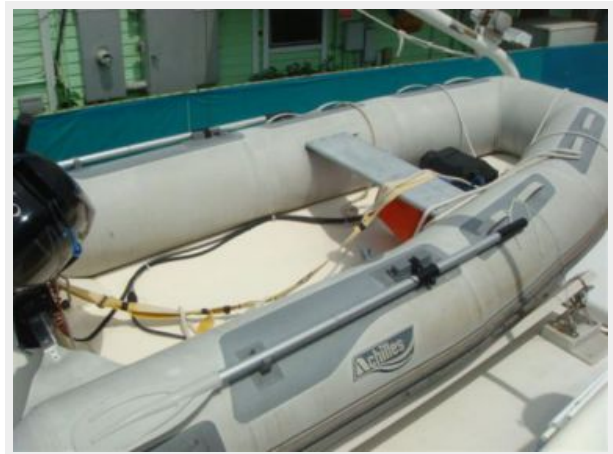
42' Jefferson flybridge port



42' Jefferson tender photo1



42' Jefferson tender photo2



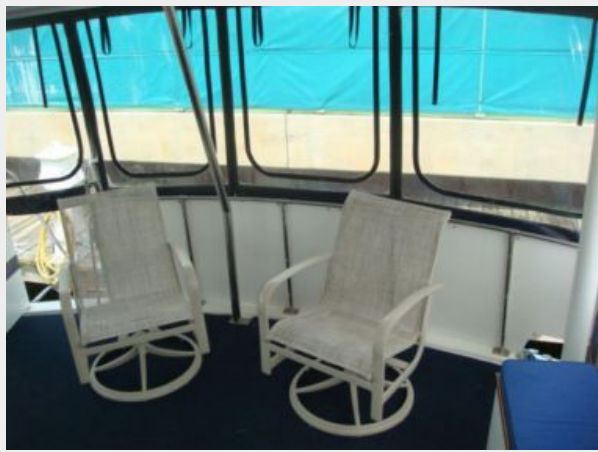
42' Jefferson tender davit



42' Jefferson flybridge starboard



42' Jeffeson sundeck



42' Jefferson sundeck port



42' Jefferson sundeck starboard



42' Jefferson sundeck forward



42' Jefferson swimplatform



42' Jefferson salon forward



42' Jefferson salon aft



42' Jefferson salon port



42' Jefferson salon starboard



42' Jefferson salon starboard seating



42' Jefferson dinette



42' Jefferson galley photo1



42' Jefferson galley photo2



42' Jefferson lower helm photo1



42' Jefferson lower helm photo2



42' Jefferson master stateroom



42' Jefferson master stateroom port



42' Jefferson master stateroom forward



42' Jefferson master stateroom head

42' Jefferson master stateroom starboard



42' Jeffersom master stateroom tub-shower



42' Jefferson guest stateroom



42' Jefferson guest stateroom head



42' Jefferson engine room access



42' Jefferson engine room aft



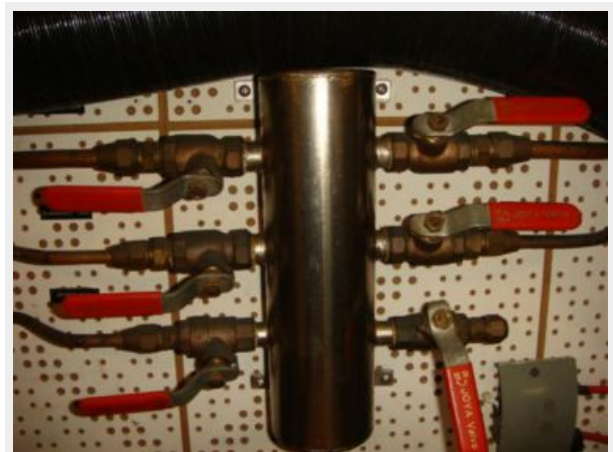
42' Jefferson port main engine



42' Jefferson starboard main engine



42' Jefferson fuel manifold



42' Jefferson fuel polishing system



42' Jefferson water heater



42' Jefferson electrical panel



42' Jefferson generator



КОНТАКТЫ

Андрей Шестаков (Andrey Shestakov) – ведущий яхтенный брокер отдела продаж яхт и судов компании Shestakov Yacht Sales Inc. Официальный представитель Shestakov Yacht Sales Inc. для русскоговорящих клиентов в центральном офисе компании в Майами/Форт Лодердейл/Флорида/США.

Контактная информация

Email: andrey@shestakovyachtsales.com

Web: shestakovyachtsales.com

Телефоны

Краснодарский край: **+7(918)465-66-44**

США, Майами, Флорида: **+1(954)274-4435**

Время работы

Понедельник – Суббота: **9:00 - 21:00**
EDT

Воскресенье: **Закрыто**

Адрес



Harbour Towne Marina, 850 NE 3rd St,
STE 213, Dania, FL 33004