

SMALL WORLD — BURGER



Судостроитель: BURGER

Год постройки: 1976

Модель: Моторная яхта

Цена: **ЦЕНА ЯХТЫ ПО ЗАПРОСУ**

Местонахождение: United States

Длина общая: 72' 0" (21.95m)

Ширина: 18' 7" (5.66m)

Макс. осадка: 5' 6" (1.68m)

Крейс. скорость: 13 Kts. (15 MPH)

Макс. скорость: 14 Kts. (16 MPH)

Купить **Small World — BURGER** а также выбрать подходящую вам яхту из нашего каталога яхт вам поможет опытный яхтенный брокер Андрей Шестаков. На сегодняшний день компания **Shestakov Yacht Sales Inc.** имеет большое количество яхт в собственном списке продаж, а также тесно сотрудничает со всеми крупными яхтенными производителями по всему миру.

Для того чтобы купить яхту **Small World — BURGER** а также проконсультироваться по любому вопросу связанному с покупкой, продажей, чартером яхт позвоните по телефону **+7(918)465-66-44**.

ОГЛАВЛЕНИЕ

ОГЛАВЛЕНИЕ	2
ХАРАКТЕРИСТИКИ	5
Обзор	5
Основная информация	5
Размеры	5
Скорость, вместимость и масса	5
Размещение	5
Корпус и палуба	6
Информация о двигателе	6
ПОДРОБНОЕ ОПИСАНИЕ	7
Accommodations	7
Master Stateroom - Lower Level	7
Guest Staterooms, Port & Starboard	7
Crew Quarters	7
Engine Room	7
Main Deck	8
Pilothouse, Main Deck	8
Galley	8
Main Salon	8
Aft Salon	9
Flybridge/Boat Deck	9
Engine/Mechanical Equipment	9
Electrical System	9
Deck Equipment	10
Recent Service Notes	10
Comments	10
Exclusions	10
Исключения	10

Отказ от ответственности	10
ФОТОГРАФИИ	11
Aft Deck Looking Forward	11
Aft Deck	11
Main Salon Looking Forward	11
Main Salon Looking Aft	11
Main Salon	11
Galley	11
Pilothouse	12
Master Stateroom	12
Guest Stateroom	12
On Deck Powder Room	12
Captains Cabin	12
Crew Quarter	12
Crew Quarters	13
Boat Deck Looking Forward	13
Boat Deck	13
Foredeck Looking Aft	13
Foredeck	13
Engine Room	13
Engine Room	14
Engine Room	14
Engine Room	14
Engine Room	14
General Arrangement	14
КОНТАКТЫ	15
Контактная информация	15
Телефоны	15
Время работы	15

Адрес

15

ХАРАКТЕРИСТИКИ

Обзор

SMALL WORLD is a classic Burger in good condition. She is stunning from all angles. Her traditional profile with Burger's customary teak trim and railings is certainly one of the most appealing designs on the waterfront.

Основная информация

Тип судна: Моторная яхта

Подкатегория: Flybridge

Модельный год: 1976

Год постройки: 1976

Страна: United States

Размеры

Длина общая: 72' 0" (21.95m)

Ширина: 18' 7" (5.66m)

Макс. осадка: 5' 6" (1.68m)

Скорость, вместимость и масса

Крейс. скорость: 13 Kts. (15 MPH)

Макс. скорость: 14 Kts. (16 MPH)

Вместимость воды: 1320 Gallons

Объем топливного бака: 2400 Gallons

Размещение

Всего кают: 3

Спальные места: 6

Каюты экипажа: 1

Койки экипажа: 4

Спальных мест экипажа: 4

Комм. состав экипажа: 1

Корпус и палуба

Материал корпуса: Aluminum

Информация о двигателе

Двигатели: 2

Производитель: Detroit Diesel

Модель: 12V71 N

Тип двигателя: Inboard

Тип топлива: Diesel

ПОДРОБНОЕ ОПИСАНИЕ

Accommodations

SMALL WORLD offers three double staterooms aft, each with ensuite head and shower. There are separate crew quarters forward for three or four persons and access to a full width, stand-up engine room is from the crew quarters. On the main deck is the spacious pilothouse, fully updated galley, powder room, lovely main salon with mahogany-like Corita wood paneling and cabinetry, and a separate full width aft deck salon. The flybridge, accessed from the pilothouse, is original as designed and built by the Burger Boat. It includes a faux stack which serves as an additional storage compartment on the upper deck.

Master Stateroom - Lower Level

The full width master cabin is aft with walkaround king sized berth with bedside cabinets to port and starboard and bulkhead mounted reading lamps as well as matching table lamps. Bureaus are built-in on each of the side of the stateroom with numerous drawers and additional cabinetry. There are large linen drawers on each side of the bed. His and hers closets are outboard. The ensuite head is forward to starboard and includes a bath tub and shower, and an art deco lighted vanity. There are opening ports on each side of the stateroom and in the head area. A television and Direct - TV receiver are facing the bed.

Guest Staterooms, Port & Starboard

The two guest cabins are forward of the master with a companionway between. Linen and storage lockers with louvered doors are accessed from the companionway. Both staterooms are furnished with twin lower berths and bedside vanities with dual reading lamps. Each stateroom has a hanging locker as well as large drawers beneath each bed. Each cabin is furnished with its own head with full amenities including a stall shower.

Crew Quarters

Crew accommodations are all the way forward, accessed from the pilothouse. The forward cabin, to starboard, has upper and lower berths and aft to port is a second cabin which has been modified to sleep two on a tapered double berth. The crew head and stall shower are between the two crew cabins while a crew lounge is aft to starboard. The entrance to the stand-up engine room is from the crew quarters. An overhead deck hatch provides access to the aft foredeck.

Engine Room

The engine room is accessed aft from the crew quarters through a watertight engine room

bulkhead door. The engine room is full width and has full standing headroom. Much of the engine room equipment including lighting and shore power management has been updated.

Main Deck

On the main deck the pilothouse is forward with sliding doors port and starboard to the walk around side decks. Access to the flybridge is to port of the pilothouse bench seat. Just aft of the pilothouse via the starboard side companionway is the galley and powder room outboard to starboard.

Pilothouse, Main Deck

Forward on the main deck and just up from the crew quarters is the teak lined pilothouse. There is excellent visibility forward and to each side with three large windows across the front. Sliding, windowed side doors, equipped with folding screen doors, provide both visibility and easy access to the walk-around side decks. An upholstered bench seat aft of the helm can seat 2-3 persons and has chart storage in large drawers beneath. A stairway to port provides access to the flybridge area. A passageway offset to starboard opens aft to the galley and main salon area. Pilothouse Electronics: Icom VHF - IC M4024 Furuno NavNet Radar w/ C-Map NT Northstar 800 GPS Robertson autopilot AP45 Wesmar Stabilizers - CPS 1000 Gyro Controller Bogen Intercom system Raytheon Navimatic Datamarine International Offshore Speed indicator Sitex FL-10 depth sounder Danforth voltmeter Standard MPS loud hailer and fog signal Engine instrumentation includes tachometers, oil pressure, engine temperature

Galley

Aft from the pilothouse to starboard is the galley with large windows to port. A powder room is located to starboard. Appliances: GE 4 burner range and oven Whirlpool Refrigerator Galanz Microwave Double stainless steel sink Garbage disposal Wet bar - KitchenAid icemaker

Main Salon

Aft from the galley is the main salon. Along both sides and across the aft bulkhead are large windows. The center window on each side can be opened. The woodwork in the main salon is naturally finished Corita wood which was popular at the Burger shipyard during the 70's. It has a mahogany tone and remains in very nice condition for a traditional and welcoming interior. A sectional seating arrangement upholstered in light colored leatherette is forward with a cocktail table in the center. Additional seating is aft and a built-in wet bar is aft to starboard and contains a sink, ice maker, and bar supply storage. The owner and guest staterooms are accessed by stairs aft to port in the salon with the master stateroom aft and two identical guest staterooms forward. A single door aft from the main salon opens to the aft deck salon.

Aft Salon

The aft deck salon is full width and surrounded by windows on both sides and across the stern. There are opening windows port and starboard and through the stern enclosure with a hinged window and weather rail gate offset to starboard for access to the transom ladder and swim platform below. Wing doors to port and starboard lead forward to the open side decks. A large lazarette compartment can be accessed through a salon deck hatch for servicing rudders, steering gear, engine starting batteries, and equipment storage.

Flybridge/Boat Deck

The flybridge console is forward with a centerline helm station and a pedestal mounted helm chair with footrests. To port is an L-shaped settee with dry storage beneath. The radar mast is centered and has storage compartments beneath. There are tender chocks and a davit but currently there is no tender for the *SMALL WORLD*. Aft of the flybridge is the boat deck with chocked cradles for the tender. Electronics: Controls for engines, stabilizers, air horns, engine synchronizer Handheld VHF Autopilot remote Engine instrumentation

Engine/Mechanical Equipment

GM 12V71 N main engines, 450 hp each, approx. 4,500 hours since overhaul Capital transmissions Morse Single Lever engine controls Racor dual fuel filters; single Racor filters for generators Dripless stuffing boxes Hynautic hydraulic engine controls Wagner hydraulic steering Bennett Trim tabs Kidde CO2 engine room fire control system and fire extinguishers throughout Cruisair air conditioning w/ reverse cycle - 7 units Black and gray water sump tanks Hart fuel tank gauge Hersey fuel tank gauge Engine alarms and emergency stops Acoustical and thermal engine room insulation Rheem 30 gallon hot water heater Mechanical bilge pump and 3 back-up pumps Dripless shaft seals Wesmar stabilizers - replaces original Vospers Galley Maid heads Underwater exhaust with Keystone side valves Craftsman tool box 4-Blade propellers 2 1/2" Propeller shafts

Electrical System

110V, 220V AC electrical system 12V & 32V DC electrical system Fully updated Wards Marine distribution panel 2006 Wards galvanic isolater 2 John Deere 20kw Powertech generators, 1,050 hours since new Stabiline voltage regulator Isolation transformers (2) Capac hull monitor LaMarch 32 volt automatic battery charger ProMarine 12 volt automatic battery charger 2 banks of 12V batteries in engine room 2 banks of 32V batteries in lazarette Sentry 12V automatic battery charger 2 50 amp 220VAC shore power cords 2 - 12 volt batteries for each generator Separate 12 V system for FB electronics 12V accessory outlets at FB, pilothouse, and aft lounge for charging cell phones or powering up 12V accessories.

Deck Equipment

32V Anchor windlass 2 anchors, 85S Danforth, 35 H Danforth Idea vertical capstan Burger anchor davit Fenders and Lines Forward cuddy storage accessed from port to starboard Lazarette compartment aft MarQuipt 7-step Tide Ride sea stairs Aluminum sole mount boarding ladder Whirlpool washer and dryer in engine room Air Condition throughout including aft deck Port and starboard 'sailboat' fender tracks Plexiglass wing doors Leather sectional and dining table/chairs on aft deck

Recent Service Notes

The boat hauled in January 2014 and replaced shell plating as needed. Shafts were removed and spun for alignment. Props were dynamically balanced. New House batteries. Shaft tubes replaced. Water tank rebuilt. Black and Grey water tanks serviced. Barrier coat as needed and new anti-fouling paint applied.

Comments

SMALL WORLD is a very unique yacht in that she has had just one owner since new. She offers three private staterooms each with en-suite head and shower, and an on deck powder room. The crew quarters are also very spacious for a vessel of this size offering two separate staterooms and a comfortable crew lounge. *SMALL WORLD* represents an outstanding opportunity to own a classic, traditional yacht with an excellent pedigree.

Exclusions

Accessories, personal items, & artwork

Исключения

При продаже яхты исключаются личные вещи владельца.

Отказ от ответственности

Компания предоставляет описание судна или яхты добросовестно, но не может гарантировать точность этой информации, а также не ручается за техническое состояние. Покупатель должен проинструктировать своих агентов или оценщиков исследовать представленную информацию более подробно, по собственному желанию. Продажа судна или яхты, изменение цены или снятие с продажи будет происходить без предварительного уведомления.

ФОТОГРАФИИ

Aft Deck Looking Forward



Aft Deck



Main Salon Looking Forward



Main Salon Looking Aft



Main Salon



Galley



Pilothouse



Master Stateroom



Guest Stateroom



On Deck Powder Room



Captains Cabin



Crew Quarter



Crew Quarters



Boat Deck Looking Forward



Boat Deck



Foredeck Looking Aft



Foredeck



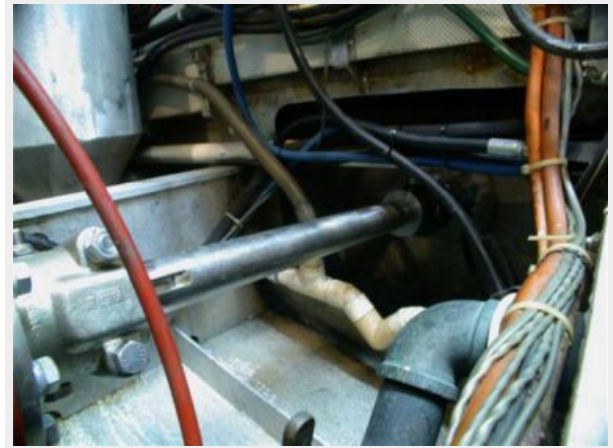
Engine Room



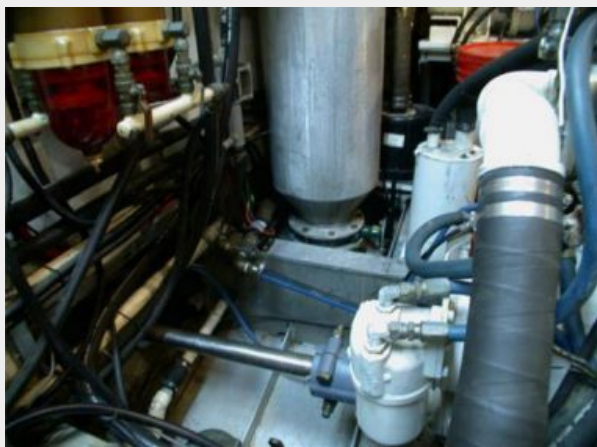
Engine Room



Engine Room



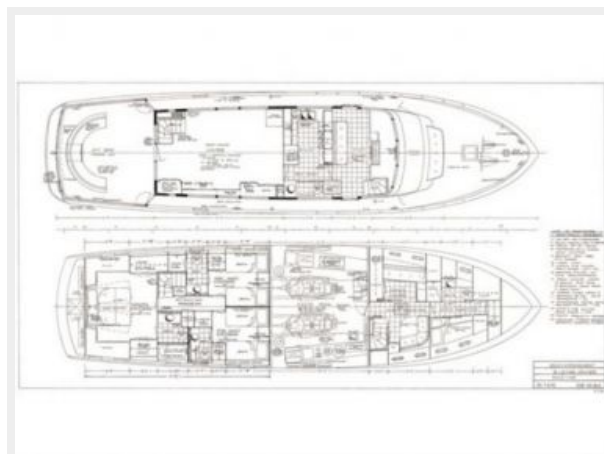
Engine Room



Engine Room



General Arrangement



КОНТАКТЫ

Андрей Шестаков (Andrey Shestakov) – ведущий яхтенный брокер отдела продаж яхт и судов компании Shestakov Yacht Sales Inc. Официальный представитель Shestakov Yacht Sales Inc. для русскоговорящих клиентов в центральном офисе компании в Майами/Форт Лодердейл/Флорида/США.

Контактная информация

Email: andrey@shestakovyachtsales.com

Web: shestakovyachtsales.com

Телефоны

Краснодарский край: **+7(918)465-66-44**

США, Майами, Флорида: **+1(954)274-4435**

Время работы

Понедельник – Суббота: **9:00 - 21:00**
EDT

Воскресенье: **Закрито**

Адрес



Harbour Towne Marina, 850 NE 3rd St,
STE 213, Dania, FL 33004