

38 SUNDANCER — SEA RAY



Builder: SEA RAY

Year Built: 2002

Model: Cruiser

Price: PRICE ON APPLICATION

Location: United States

LOA: 38' 0" (11.58m)

Beam: 13' 0" (3.96m)

Max Draft: 3' 4" (1.02m)

Our experienced yacht broker, Andrey Shestakov, will help you choose and buy a yacht that best suits your needs 38 Sundancer — SEA RAY from our catalogue. Presently, at Shestakov Yacht Sales Inc., we have a wide variety of yachts available on our sale's list. We also work in close contact with all the big yacht manufacturers from all over the world.

If you would like to buy a yacht 38 Sundancer — SEA RAY or would like help answering any questions concerning purchasing, selling or chartering a yacht, please call +1(954)274-4435

TABLE OF CONTENTS

TABLE OF CONTENTS	2
SPECIFICATIONS	4
Overview	4
Basic Information	4
Dimensions	4
Speed, Capacities and Weight	4
Accommodations	4
Hull and Deck Information	5
Engine Information	5
DETAILED INFORMATION	6
Hull & Deck Features	6
Systems	6
Electrical Systems	7
Helm	7
Electronics	8
Cockpit Features	8
Cabin Features	9
Forward Stateroom	9
Galley	9
Salon	10
Mid-Stateroom	10
Head and Shower	10
Engine Room	11
Underwater Gear	11
Exclusions	11
Disclaimer	12
PHOTOS	13
CONTACTS	19

Contact details	19
Telephones	19
Office hours	19
Address	19

SPECIFICATIONS

Overview

Price just reduced to \$109,500.00

New to the market. low hour , well maintained vessel, this is one of the nicer 38 Sea Ray Sundancers on the market today. The boat has only 171 hours the port engine was just rebuilt with a new long block with less than 10 hours. The owners plans have changed requiring them to sell a boat they love

The boat comes with a full camper canvas package including interior screens. Don't miss an opportunity to purchase a very nice low hour Sea Ray call today.

Basic Information

Category: Cruiser

Sub Category: Express

Model Year: 2002

Year Built: 2002

Country: United States

Dimensions

LOA: 38' 0" (11.58m)

Beam: 13' 0" (3.96m)

Max Draft: 3' 4" (1.02m)

Speed, Capacities and Weight

Displacement: 18300 Pounds

Water Capacity: 70 Gallons

Holding Tank: 42 Gallons

Fuel Capacity: 275 Gallons

Accommodations

Total Cabins: 2

Total Heads: 1

Hull and Deck Information

Hull Material: Fiberglass

Hull Color: White

Hull Finish: Plastic

Hull Designer: Sea Ray

Exterior Designer: Sea Ray

Interior Designer: Sea Ray

Engine Information

Engines: 2

Manufacturer: Mercruiser

Model: 8.1

Engine Type: Inboard

Fuel Type: Gas

DETAILED INFORMATION

Hull & Deck Features

Bottom Paint
Bow Rail
Cleats
Color Schemes
Deck Fill Plates
Deck Rails
Drain Plug
Gel-Coat
Graphics
Handrails
Hatches
Light
Lights
Portlights
Resin
Rub Rail
Storage
Swim Platform
Thru-Hull Fittings
Toe Rail
Vent System
Windshield
Windshield Washer System

Systems

Trim Tabs
Waste Systems
Head System
Holding Tank
Holding Tank Level Indicators
Sump Box
Water System

Freshwater Washdown Spigot
Pressure Water System
Shower
Water Heater
Water Inlet
Water Tank
Windlass System
Anchor
Anchor Chute
Anchor Rope/Chain Storage
Anchor Washdown Spigot
Meets Applicable USCG & ABYC Standards
NMMA Yacht Certification
Windlass

Electrical Systems

Batteries
Battery Charger/Converter
Electronics Circuit
Inlet
Isolators
Panel
Panel
Panel
Panel
Shore Power
Wiring

Helm

Alarms
Alarms
Compass
Emergency Start System
Gel-Coated Dash
Horns

Instrumentation

Panel

Panel

Shift & Throttle Controls

Spotlight

Steering

Steering

Steering Wheel

Switches

Systems Monitor

Electronics

GPS

Multifunction Instrument

VHF Radio

Cockpit Features

Beverage Holders

Carpet Liner

Door

Door

Floor Liner

Hatch

Ice Bucket

Icemaker

Lighting

Outlet

Outlet

Rod Holders

Seating

Seating

Seating

Sport Spoiler

Steps

Storage

Table
Wet Bar

Cabin Features

Carbon Monoxide Monitor
Carpet
Carpet Runners
Curtains & Drape Trim
Handrails
Interior Finish
Lighting
Lighting
Outlet
Outlet
Outlets
Pillows
Polished Chrome Outlet & Switch Plates
Stereo
Storage
Vacuum System
Wood Trim

Forward Stateroom

Bed
Door
Hanging Locker
Hanging Locker
Mirrored Rope Locker Bulkhead
Storage
TV/VCR/Radio Combo

Galley

Coffeemaker
Countertop

Microwave
Power Vent
Refrigerator/Freezer
Storage
Storage
Stove
Trash Receptacle

Salon

Filler Cushions
Mirrors
Seating
Storage
Table
TV/VCR/Radio Combo

Mid-Stateroom

Curtain
Hanging Locker
Mirrored Bulkhead
Portlights
Seating
Storage

Head and Shower

Clothes Hook
Door
Handrails
Head
Power Vent
Shower
Shower Grate
Storage
Storage

Vanity

Engine Room

Bilge Pumps

Bilge Pumps

Blowers

Exhaust

Fire Extinguisher

Fire Suppression System

Freshwater Cooling

Gel-Coated Engine Room

Insulation

Lighting

Oil Changer System

Steps

MerCruiser 8.1 -370 HP gas engines

7.0 kW Westerbeke Gas

Remote Start

Underwater Gear

Bonding System

Propeller Shafts

Propellers

Rudders

Seacocks on all Underwater Fittings

Seawater Strainers

Shaft Logs

Struts

Trim Tabs

Exclusions

Owner's personal belongings.

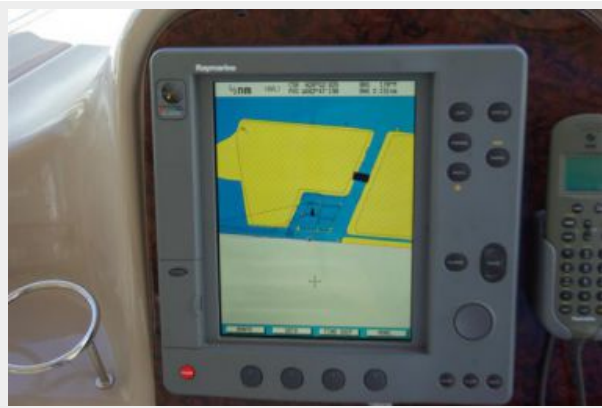
Disclaimer

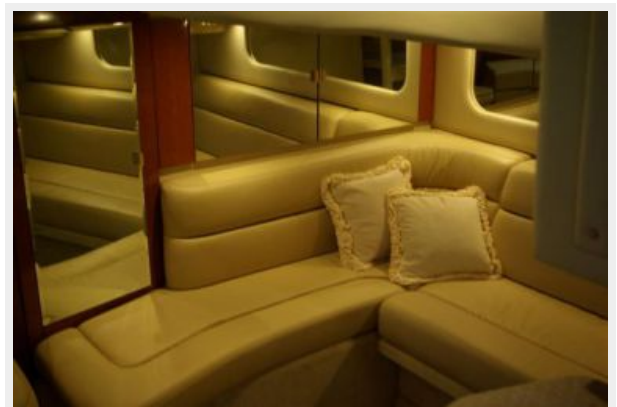
The Company offers the details of this vessel or yacht in good faith but cannot guarantee or warrant the accuracy of this information nor warrant the condition of the vessel. A buyer should instruct his representatives, agents, or his surveyors, to investigate such details as the buyer desires validated. This vessel or yacht is offered subject to prior sale, price change, or withdrawal without notice.

PHOTOS













CONTACTS

Andrey Shestakov, leading yacht broker of the sales department of Shestakov Yacht Sales Inc. Shestakov Yacht Sales Inc., the official representative of the Miami/Fort Lauderdale FL headquarters.

Contact details

Email: andrey@shestakovyachtsales.com

Web: shestakovyachtsales.com/en/

Telephones

USA: +1(954)274-4435

Office hours

Monday – Saturday: **9:00 - 21:00** EDT

Sunday: **closed**

Address



Harbour Towne Marina, 850 NE 3rd St,
STE 213, Dania, FL 33004